

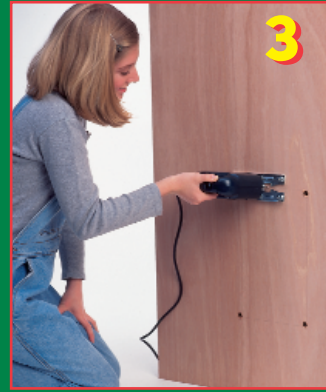
# Install Your Hefty Kat™ Door In Four Easy Steps: (Detailed Instructions and Template Inside Box)



Draw Around  
Paper Template.  
(Supplied in box)



Drill The Four Corner Holes...Then Saw Opening.



Insert Frame,  
Screw Into Place.

## Tools Required for Installation:

- Hammer and Awl (or Nail)
- Drill &  $\frac{3}{8}$ " (1cm) Drill Bits
- Sabre Saw
- Phillips Screwdriver
- Safety Glasses