

# **VEVOR<sup>®</sup>**

**TOUGH TOOLS, HALF PRICE**

Technical Support and E-Warranty Certificate [www.vevor.com/support](http://www.vevor.com/support)

## **FUEL LINE HOSE**

**MODEL:CPE-6AN-20ft/CPE-8AN-20ft/CPE-10AN-10ft**

We continue to be committed to provide you tools with competitive price.

"Save Half", "Half Price" or any other similar expressions used by us only represents an estimate of savings you might benefit from buying certain tools with us compared to the major top brands and does not necessarily mean to cover all categories of tools offered by us. You are kindly reminded to verify carefully when you are placing an order with us if you are actually saving half in comparison with the top major brands.

# VEVOR<sup>®</sup>

TOUGH TOOLS, HALF PRICE

## FUEL LINE HOSE

MODEL:CPE-6AN-20ft / CPE-8AN-20ft / CPE-10AN-10ft



### NEED HELP? CONTACT US!

Have product questions? Need technical support? Please feel free to contact us:

**Technical Support and E-Warranty Certificate**  
[www.vevor.com/support](http://www.vevor.com/support)

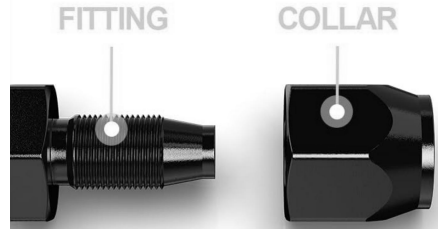
This is the original instruction, please read all manual instructions carefully before operating. VEVOR reserves a clear interpretation of our user manual. The appearance of the product shall be subject to the product you received. Please forgive us that we won't inform you again if there are any technology or software updates on our product.

## PRODUCT INTRODUCTION

CPE: Only work with CPE stainless braided nylon braided hose.

Compatibility and durability: Braided fuel hose made of CPE synthetic rubber. 304 stainless steel in the middle layer which achieves the desired flexibility and mechanical bond between the braiding layers.

Applicable medium: fuel line kit widely used as transmission oil cooler line, fuel return line, fuel supply line, coolant fluid hose, fuel gauges line, vacuum line, turbo cooler line, oil feed line. Please check the pressure of application before purchase.



## Warning Tips:

1. Professional installation is strongly recommended, but it is not recommended to install in a corrosive environment, as it will affect the service life of the 6AN/8AN/10AN braided fuel pipe.
2. The surface is sharp, please wear gloves when installing.
3. It is strictly prohibited to mix the hose with acid, alkali, oil, organic solvent, inflammable and explosive materials. The hose body should not be in direct contact with goods with sharp edges.
4. When handling hoses, they should not be dragged anywhere. For heavy hoses, lifting equipment or specialized machinery should be used for loading and unloading, and accidental damage to the hoses should be prevented.
5. Keep away from open flame. This product will ignite and burn if brought into contact with an open flame.
6. Keep away from sharp points, blades and other items, so as not to scratch the product.
7. This product is not a toy, Dump truck mesh tarp cannot be used as toys for children to play with.









**SAVE THESE INSTRUCTIONS**

## PRODUCT PAREMETERS

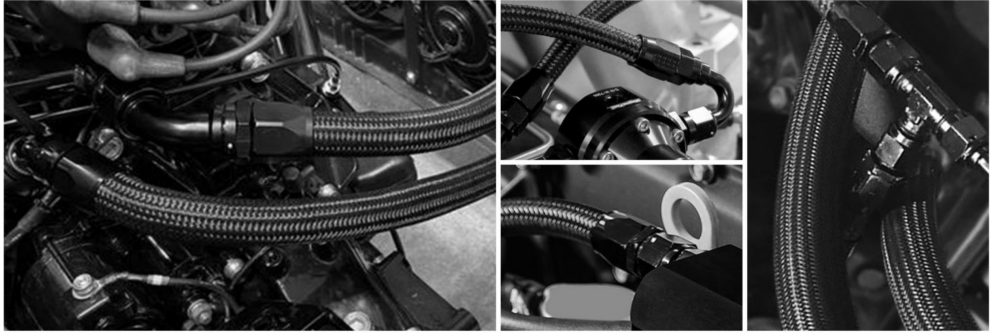
Model	CPE-6AN-20ft	CPE-8AN-20ft	CPE-10AN-10ft
Fuel Hose Size	6AN	8AN	10AN
Length	20ft	20ft	10ft
Max working pressure	500psi	500psi	500psi
Burst Pressure	2000 psi	2000 psi	2000 psi
Working Temp	-40°F ~+257°F	-40°F ~+257°F	-40°F ~+257°F
Material	Stainless Steel & Nylon&CPE	Stainless Steel & Nylon&CPE	Stainless Steel & Nylon&CPE
Colour	Black	Black	Black

## INSTALLATION INSTRUCTIONS

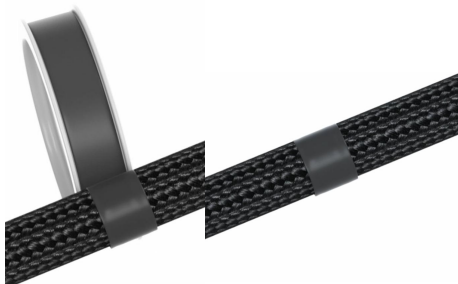
Model		CPE-6AN-20ft	CPE-8AN-20ft	CPE-10AN-10ft
Straight Adapters		4 PCS	4 PCS	2 PCS
45 Degree Adapters		2 PCS	2 PCS	2 PCS
90 Degree Adapters		2 PCS	2 PCS	2 PCS
180 Degree Adapters		2 PCS	2 PCS	0 PCS
Hose Separator		2 PCS	2 PCS	1 PCS
Sealing Ring		10 PCS	10 PCS	6 PCS

# Application

Please check the working pressure and temperature of your system before purchase



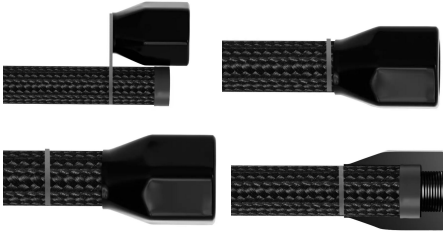
1. Only work with CPE stainless braided nylon braided hose.



2. When installation, please take care of these details. Use electrical tape to reduce wear.



3. After completing cut, cleanup the residual debris. Trimming of hose edges after cutting



4. Confirm the installation position. Mark and confirm the installed position of fitting during.



5. Installation, Put fuel lubricating oil on its threads to effectively reduce thread wear.



6. Use a wrench to clamp one side and then use the wrench to screw in the joint.

**Address:** Baoshanqu Shuangchenglu 803long 11hao 1602A-1609shi Shanghai  
**Imported to AUS:** SIHAO PTY LTD. 1 ROKEVA STREETEASTWOOD NSW 2122  
Australia

**Imported to USA:** Sanven Technology Ltd. Suite 250, 9166 Anaheim Place,  
Rancho Cucamonga, CA 91730

<b>UK</b>	<b>REP</b>
-----------	------------

Pooledas Group Ltd  
Unit 5 Albert Edward House, The  
Pavilions Preston, United Kingdom

<b>EC</b>	<b>REP</b>
-----------	------------

SHUNSHUN GmbH  
Römeräcker 9 Z2021, 76351  
Linkenheim-Hochstetten, Germany

**Made In China**

**VEVOR<sup>®</sup>**

**TOUGH TOOLS, HALF PRICE**

**Technical Support and E-Warranty Certificate**

**[www.vevor.com/support](http://www.vevor.com/support)**