



DO IT YOURSELF

Corner Trellis

Skill Level



Estimated Cost

\$125

Time



1/2 Day

Download PDF





Corner Trellis

This PVC Corner Trellis is a great addition to any outdoor living area. The design is flexible enough to accent any home style by simply altering the header board. We are using a Craftsman style in this project, but the addition of crown and/or other trims will allow for a multitude of variations.

As for the flowers, here is a great article on the best plants for a Trellis:
<https://www.gardenguides.com/103233-plants-trellis.html>



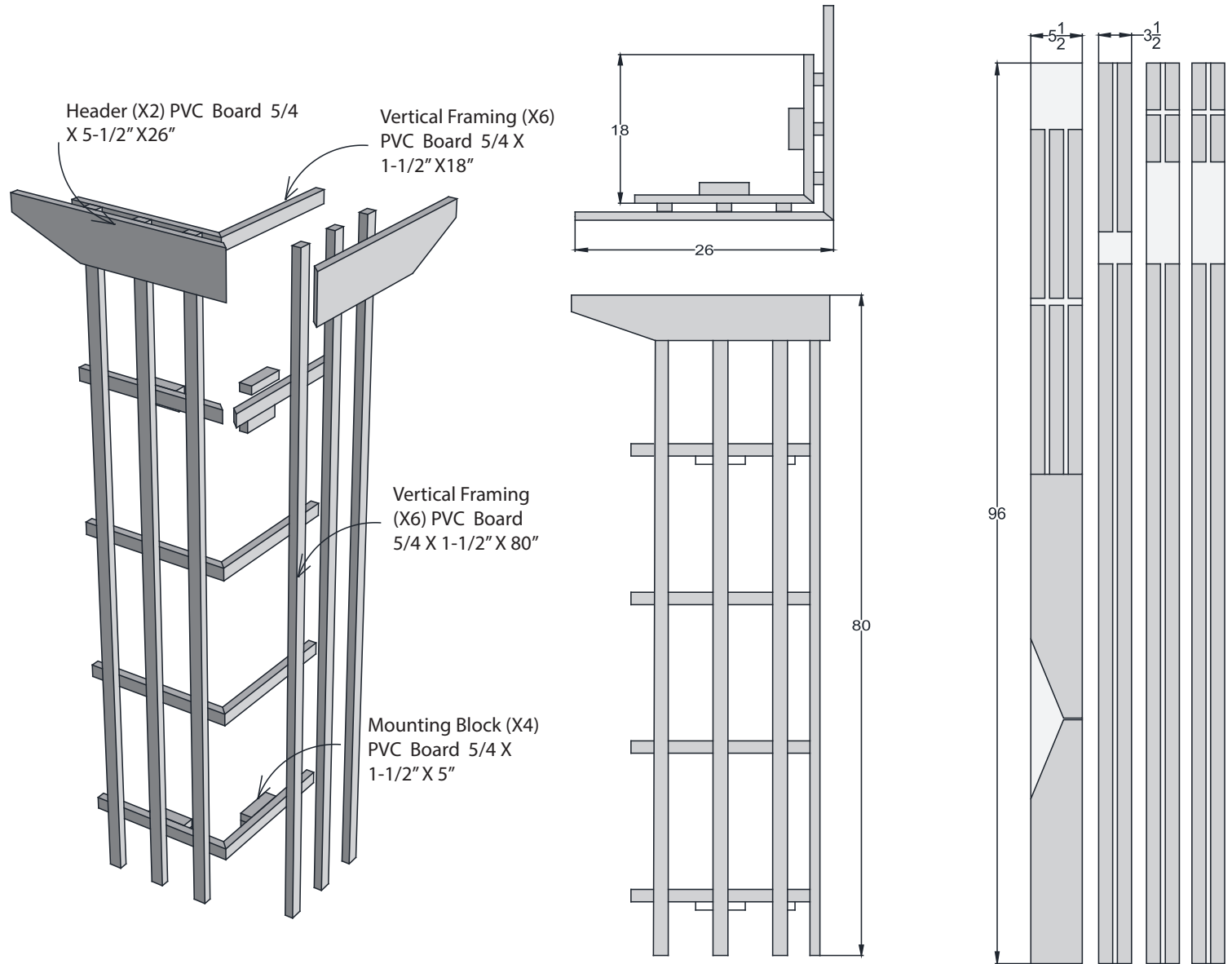
Drawing - Layout

Tools

- Hearing Protection
- Safety Glasses
- Drill Bits
- Power Miter Saw
- Drill / Driver
- Table Saw or Circular Saw
- Tape Measure

Materials

- 1ea - 5/4" X 6" x 8' trim board
- 3ea - 5/4" X 4" x 8' trim board
- PVC Glue
- 1-1/2" exterior wood screws
- 20ea - Cortex Plug and screw fasteners
- 2" exterior wood screws



Step 1: Cut Parts

1.1 – Cut Stock

Using the drawing as a guide, lay out the Panel as directed.

1.2 – Glue all Miters

Using PVC Cement and CA glue, pre-assemble all the mitered parts. You should have five (5) horizontal frames and one head assembly.

1.3 – Assemble Frame

Using PVC Glue and 1-1/2" wood screws, attach the horizontal frame to the uprights. Make a 4-1/2" spacer to maintain distance between uprights. Critical dimensions:



1.4 – Assemble Frame

After completing one side, flip the assembly to fasten the remaining uprights.

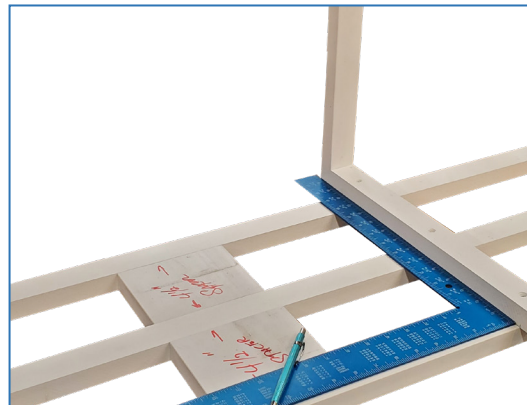
Cut Stock



Glue all Miters



Assemble Frame



Attach Frame



Step 2: Cut Board Parts

2.1 – Attach Header

Use Clamps and PVC Glue to attach the header to the frame.

2.2 – Make the Stand-Offs

Glue the 5" pieces as illustrated to create the stand-off attachments.

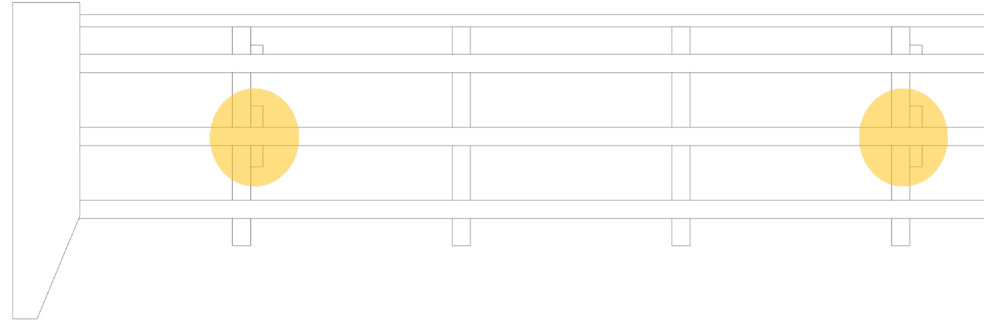
NOTE: depending on the type of siding, this could vary in size.

2.3 – Fasten Stand-Offs to Frame

With 2" screws and PVC glue, connect the stand-offs to the frame. Locate them in the center of each side on the horizontal frame, as highlighted in the illustration.

2.4 – Attach to the Wall

Fasten the trellis to the wall using screws appropriate for the application. As a rule of thumb, the fastener should penetrate 1-1/2" into the sub-structure.



Attach Header



Make the Stand-Offs



Fasten Stand-Offs to Frame



Attach to the Wall





 **ROYAL**® Building Products
A Westlake Company

RoyalBuildingProducts.com

1.855.ROYAL85