

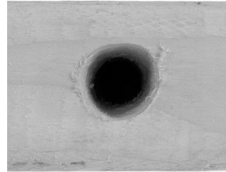
40 INCH TIFFANY LAMP HANGING INSTRUCTIONS

INTRODUCTION: It is very important that you mount your lamp from a stud or wooden cross beam in your ceiling. **DO NOT HANG IN DRYWALL.**

MOUNTING KIT INCLUDES: Mounting Plate, Mounting Bolt with Twist on Hanger and Cover Cap

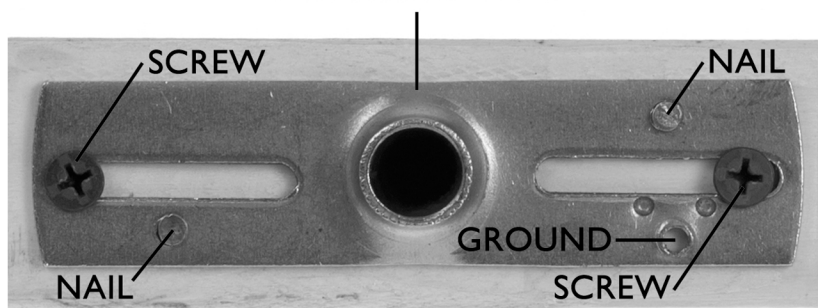
YOU WILL NEED: Drill, 1/2 Inch Drill Bit, (2x)Pliers, Hammer, (2x)2 Inch Wood Screws and (2x)1-2 Inch Nails

1: Locate a secure mounting location in the ceiling. Using the 1/2 Inch drill bit, drill a hole straight into the stud or cross beam at least 1 1/4 inches deep.



2: Line up mounting plate with the hole. The part that is raised should be facing the floor and the plate must be aligned with the stud so it is screwed into the wood and not a void or drywall. Remove the ground screw if not using and nail in place using the small holes. The nails should have resistance the whole time. Now that plate is secure, drill one screw into each of the large oval openings. Ensure screw head is larger than the opening.

MOUNTING PLATE



3: Thread the Twist on Hanger onto the the Mounting Bolt until it is tight. Center the Cover Cap with the large hole of the mount plate. Insert mounting bolt (thread side up with twist on hanger) through the center of the cap and begin twisting into the large center hole of the mount plate until tight. The cap should be flush with the ceiling, stud or cross beam.

MOUNT PLATE
MOUNTING BOLT
COVER CAP
TWIST ON HANGER



4: The lamp has excess chain to be hung at variable heights. Determine your desired height and using the 2 pairs of pliers pull the seam of the chain link apart about 1/2 of an inch. Remove the unnecessary chain but leave this gap open. Ensure the same amount of chain is removed from the second chain on the other side.



5: You are now ready to hang the lamp. Take the two open links and attach them to the the Twist on Hanger. It is easier if a helper holds the lamp while you hang the chains. Using the pliers, close the link and gently allow the lamp to hang down on its own. Plug in and enjoy your new lamp.

