

# 6036STWP – EVERYDAY TUB/SHOWERS

60 x 36 x 76 inches

SOAKER MODEL #6036ST

WHIRLPOOL MODEL #6036STWP



## FEATURES

- Tub-shower
- Smooth tile finish
- Ergonomic backrest
- Molded toiletry shelf
- Slip-resistant textured bottom
- Left or right hand drain
- AcrylX™ applied acrylic surface
- Lifetime limited warranty

### Whirlpool Features:

- 6 directional hydrotherapy jets
- Color matched or clear trim
- Pneumatic on/off control
- Advanced safety suction system

## OPTIONS

- Removable access panel (whirlpool models)
- Designer drain, waste & overflow
- Shower Door Series L0516

## AQUATIC ADVANTAGE

- National distribution
- 6 manufacturing facilities
- Private fleet
- Centralized customer service
- Field support

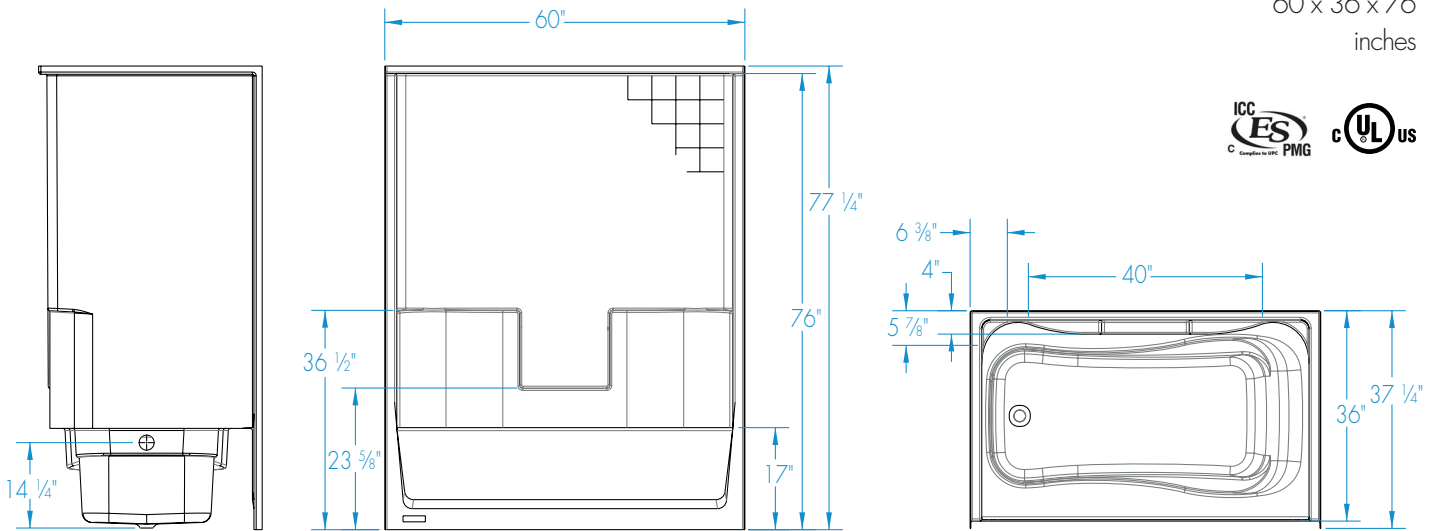
## COLOR OPTIONS

Stock	Upgraded	Premium
Almond White	Linen/Biscuit Bone	Black Mexican Sand Sand Bar Sterling Silver



# 6036STWP

60 x 36 x 76  
inches



**FEATURES** lbs      Dimensional Tolerance  $\pm 3/16"$ . Dimensions needed for site preparation should be measured from the unit. Aquatic assumes no responsibility for preparatory work.

Model #	Material	Wall Finish	Jets	Motor	Controls	Drain	Net Wt.	Pkg. Wt.
Soaker #6036ST	AcrylX™	Smooth Tile	0	-	-	LH or RH	146	151
Whirlpool #6036STWP	AcrylX™	Smooth Tile	6	63 GPM	Pneumatic	LH or RH	196	201

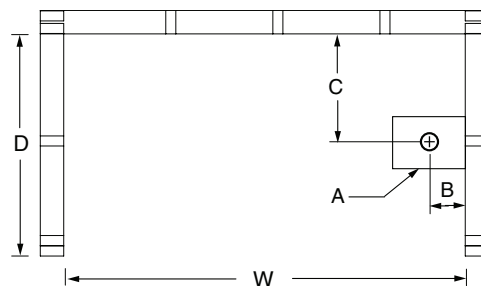
## DIMENSIONS

Specifications	inches
Width: Overall / Net	60
Depth: Overall / Net	37 1/4 / 36
Height: Overall / Net	77 1/4 / 76
Enclosure Opening	56
Skirt Height	17
Drain Rough-In (from Back Wall)	18
Drain Rough-In (from Side Wall)	2 1/4
Drain: Diameter / Clearance	2 / 1/4

## FRAMING DIMENSIONS

 inches

Type	D Depth	W Width	H Height	A	B	C
Alcove	37 1/4	60 1/8	-	Box Out	2 1/4	18



## SUMP DATA

Top of Drain to Bottom of Overflow	Capacity to Overflow gal	Min. Operating Capacity gal	WIDTH @ centerline		DEPTH @ centerline	
			Top	Bottom	Top	Bottom
12 1/2	50	35	52	48 1/8	23	19 1/2