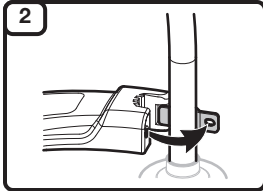




1

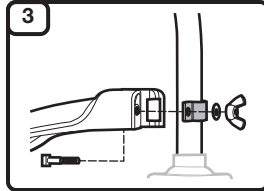
Read the operator's manual thoroughly before operating the unit. Follow all warnings and safety instructions. This fast guide is intended as a reference for users that have already read the operator's manual and are familiar with the necessary safety precautions.



ASSEMBLY

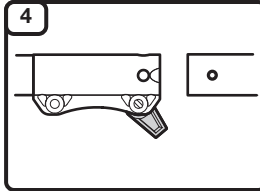
2

Insert the short tab (the one without a hole) on the mount bracket into the slot on the cutting head shield. Rotate the cutting head shield counterclockwise.



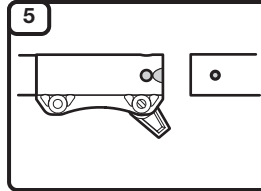
3

Insert the square bolt into the hole underneath the cutting head shield. Push the square bolt through the cutting head shield and mount bracket. Place the washer and wing nut onto the square bolt. Tighten the wing nut securely.



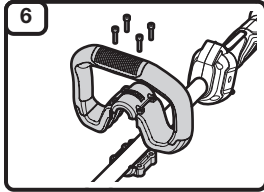
4

Remove the hanger cap from the attachment. If present, remove the gray spacer from the coupler. Turn the knob counterclockwise to loosen the coupler.



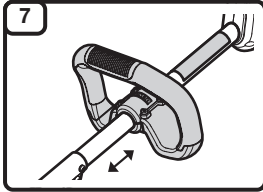
5

Align the release button with the guide recess. Push the attachment straight into the coupler until the release button snaps firmly into the primary hole. Turn the knob clockwise to tighten the coupler.



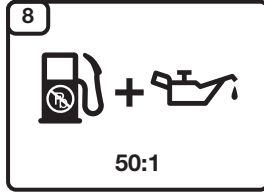
6

Press and hold the handle base against the underside of the upper shaft housing. Press the handle top onto the handle base until they snap together. Insert the bolts (x4) into the holes (x4). Tighten the bolts, but do not tighten them completely. Use a 5/32-inch (4 mm) Allen wrench.



7

Hold the unit in the operating position. Move the handle up or down the upper shaft housing to a comfortable location. Make sure the handle is positioned beyond the end of the safety label. Tighten the bolts until the handle is secure.

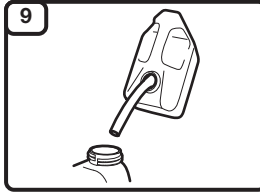


8

Mix thoroughly in a separate fuel can:

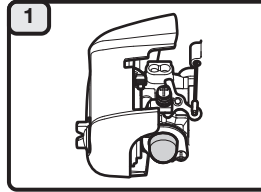
- 2.6 fl. oz. of 2-cycle engine oil
- 1 gallon of fresh unleaded gasoline (**less than 30 days old**)

NOTE: Do not mix directly in the unit fuel tank.



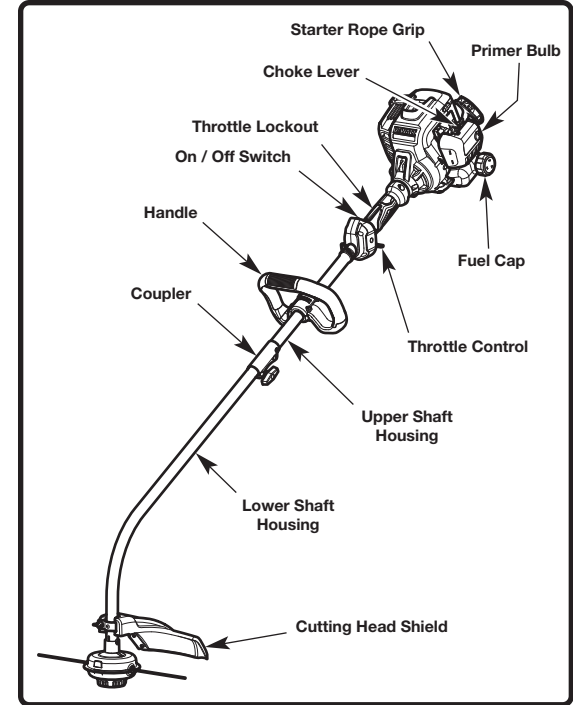
9

Position the unit with the fuel cap facing up. Slowly remove the fuel cap. Fill the fuel tank. Reinstall the fuel cap. Move the unit at least 30 ft. (9.1 m) from the fuel container and the fueling site before starting the engine.



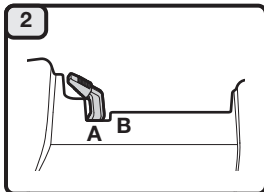
STARTING

Slowly press and release the primer bulb **10 times**.



ASSEMBLY TOOLS REQUIRED

- 5/32-inch (4 mm) Allen wrench (included)



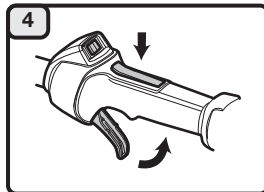
11

Move the choke lever to **Position A**.



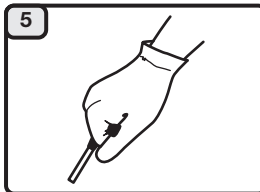
12

Crouch in the starting position.



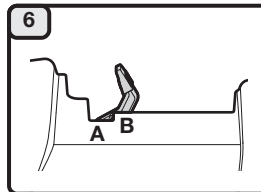
13

SQUEEZE and HOLD the throttle lockout and the throttle control for ALL further steps.



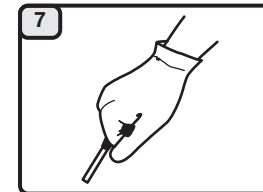
14

Pull the starter rope with a controlled and steady motion **5 times**.



15

Move the choke lever to **Position B**.



16

Pull the starter rope with a controlled and steady motion **5 times** to start the engine. Allow the engine to warm up for 60 seconds. The unit may be used during this time.

DIDN'T START?

Repeat the starting instructions. If the unit still fails to start, refer to the operator's manual for additional starting and troubleshooting information.



IMPORTANT: READ THE OPERATOR'S MANUAL THOROUGHLY AND FOLLOW THE SAFE OPERATION PRACTICES WHILE OPERATING THE UNIT.

Consultez le manuel pour lire la traduction française. Lea la traducción en Español en el manual.