

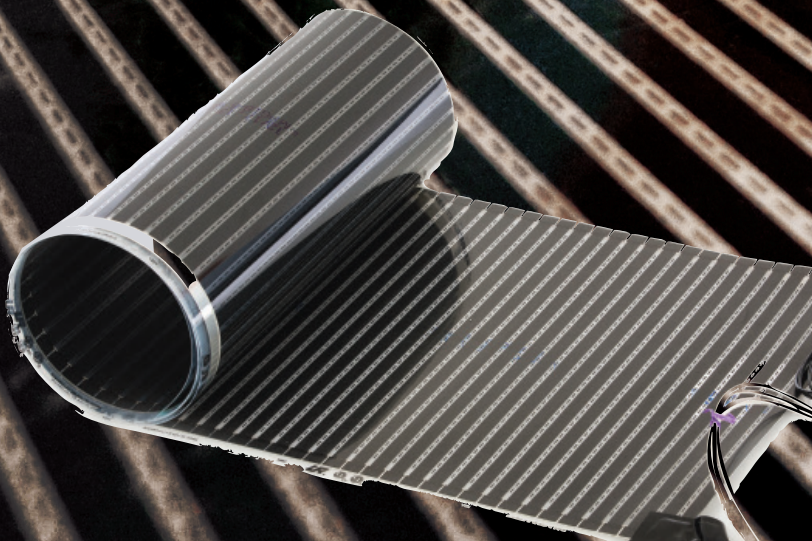
# THE heat IS ON!



## QUIETwarmth®



**ELECTRIC RADIANT FLOOR HEATING SYSTEM**



**RADIANT HEAT FILM FOR FLOATING FLOORS**

**MPglobal™**

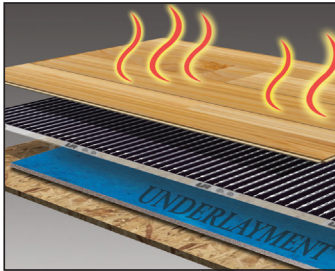
[www.QuietWarmth.com](http://www.QuietWarmth.com)



# QUIETwarmth

## RADIANT HEAT FILM FOR FLOATING FLOORS

QuietWarmth® Radiant Heat Film is a flexible, ultra-efficient radiant heating product engineered to deliver ultimate thermal comfort by gently warming all types of floating floors with energy efficiency and low cost consumption. All kits are configured with factory connections and all products are suitable for either new construction or renovation projects.



- 🔥 Even heat distribution
- 📏 Ultra-thin. (Increases floor height less than a credit card)
- 🕒 No thin set or self leveling mortar
- 💰 Cut to fit length
- ⚡ Low cost energy consumption
- ⚡ Fast & easy installation

✂️ Can cut  
to length



### USE BENEATH:

Laminate, Luxury Vinyl Planks (4mm+),  
WPC, Engineered Wood

## DETERMINING YOUR SYSTEM

To reduce waste and increase cost efficiency, QuietWarmth mat systems come in two convenient designs;

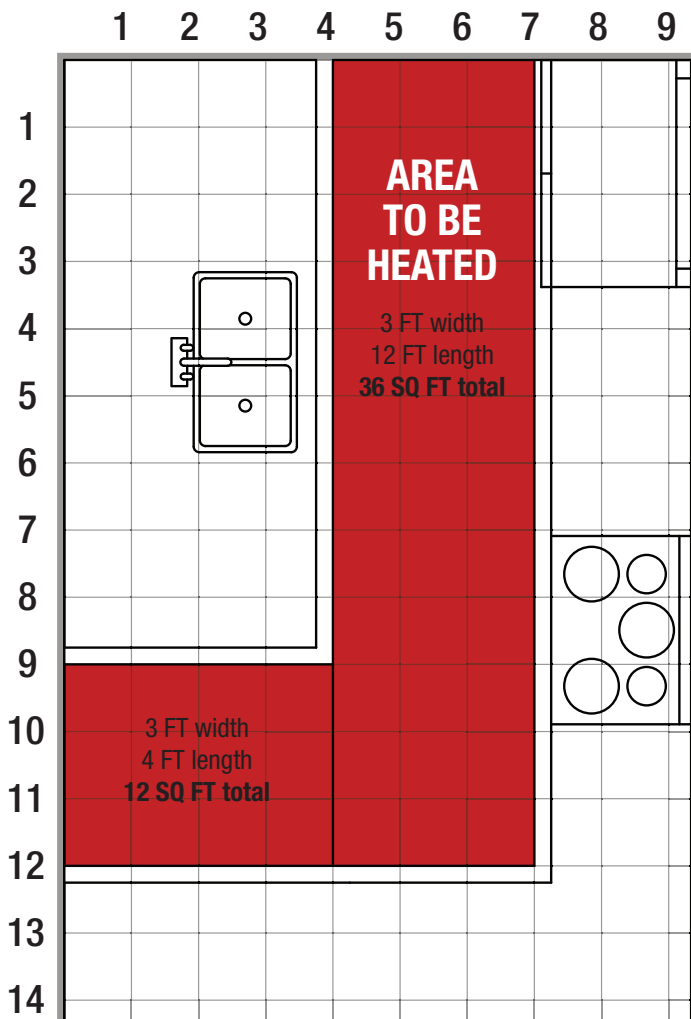
### ONE SIDED & TWO SIDED APPLICATIONS.

One sided applications have lead wires on one end of the mat creating one workable area after being cut to length, while two sided applications have lead wires on both ends of the mat, creating two workable areas when cut.

To choose which system is right for your space:

- 1) Measure the length and width of the area to be heated.
- 2) Determine the square footage of the heated area by multiplying the length of the floor to be covered by the width.
- 3) Choose which mat system is best for the area.

In the example to the left, only one 3' x 16'8" QuietWarmth 2in1 mat was used for the entire kitchen, creating minimal waste and cutting overall cost!



view our install videos online at [www.quietwarmth.com](http://www.quietwarmth.com)

# QUIETwarmth

RADIANT HEAT FILM FOR FLOATING FLOORS

## MAT SYSTEMS

Determine mat system based on area size



### ONE SIDED CUT-TO-LENGTH APPLICATIONS



#### ITEM DESCRIPTION:

##### Standard Sizes for 120V

PRODUCT PART #	DIMENSIONS	WATTS	AMPS	SQFT
QWARM1.5X10F120V	1.5' x 10'	156	1.30	15
QWARM3X5F120V	3' x 5'	167	1.39	15
QWARM3X10F120V	3' x 10'	334	2.78	30

##### Standard Sizes for 240V

PRODUCT PART #	DIMENSIONS	WATTS	AMPS	SQFT
QWARM1.5X10F240V	1.5' x 10'	156	0.65	15
QWARM3X5F240V	3' x 5'	167	0.70	15
QWARM3X10F240V	3' x 10'	334	1.39	30

- One sided cut-to-length applications have lead wires on one end of the mat and produce one workable mat after being cut to size.



### TWO SIDED CUT-TO-LENGTH APPLICATIONS



#### ITEM DESCRIPTION:

##### Standard Sizes for 120V

PRODUCT PART #	DIMENSIONS	WATTS	AMPS	SQFT
QWARM1.5X16.6F120V	1.5' x 16'8"	n/a	n/a	25
QWARM3X16.6F120V	3' x 16'8"	n/a	n/a	50

##### Standard Sizes for 240V

PRODUCT PART #	DIMENSIONS	WATTS	AMPS	SQFT
QWARM3X16.6F240V	3' x 16'8"	n/a	n/a	50

- 2-in-1 applications have lead wires on both sides of the mat and produce 2 workable mats after being cut.
- 2-in-1 applications MUST be cut before being used.

Other sizes and custom orders are available on request.



view our install videos online at [www.quietwarmth.com](http://www.quietwarmth.com)

# ADVANTAGES

## ENVIRONMENTAL ATTRIBUTES

- LEED Compliant for: EA Prerequisite 2, EA Credit 1, MR Credit 2.1, MR Credit 2.2, MR Credit 5.1, EQ Prerequisite 1, EQ Credit 7.1, EQ Credit 3.1, EQ Credit 3.2, ID Credit 1
- 99.9% of energy is turned into heat with no parasitic loss.

## APPROVED FLOOR COVERING MATERIALS

Approved floor coverings for Radiant Heat Film: All Floating Floors • Floating tiles • Laminate  
Engineered Wood • Luxury Vinyl Flooring • Cork & Bamboo

Approved for Peel & Stick Radiant Heat for Tile: Ceramic tile • Porcelain tile • Natural Stone Tile

\* Refer to Floor Covering Manufacturer's specifications for compatibility of their product over any radiant heat before installation.

## QuietWarmth vs. Other Electric Floor Systems

- There is no easier radiant floor heating system to install.
- Will warm the floor and depending on performed heat loss calculations, QuietWarmth can warm the entire room when it is installed in at least 80% of the room's floor.
- Minimal thickness profile. Ultra-thin (less than .016") heated panels keep same floor heights through room transitions.
- Provides uniform heat. Your floor is heated uniformly with no gaps and the radiant heat is dispersed evenly throughout the room.
- Quiets your floor when used in combination with QuietWalk underlayment, you achieve a superior sound rating: IIC 71 & STC 67
- Factory Attached Lead Wires. 15' lead wires are connected to one end of each mat for easy routing and final connecting to the thermostat.
- Safety certified by ETL in compliance with UL Standards for radiant flooring in the USA and Canada.
- Costs less to operate. Even heat distribution allows the QuietWarmth systems to cycle quicker resulting in less energy consumption.

## QuietWarmth vs. Hydronic (water)

- Maintenance free. No mechanical heaters to heat the water and pumps to move the water. No potential maintenance issues to worry about.
- Even heat distribution. Water near the end of the system has cooled compared to water at the beginning of the system.
- More efficient. Water systems must heat the water, then move the water by pumping it through pipes. With Floating Floor Heat, all the electric power is used to heat the floor.
- Does not raise the floor. Most hydronic systems raise the floor level by as much as 1½ inches to make room for the water pipes.
- Simpler, lower cost installation. No water heaters, pumps, manifolds tubing and other mechanical parts.

## QuietWarmth vs. Electric Baseboard

- More efficient and more even heat distribution. Baseboard heating is located at the room perimeter and overheats the outside of the room. It does not warm the floor or your feet.
- Safer. Baseboard heating can be hot to the touch.
- Better appearance. Baseboard heaters are unsightly while Floating Floor Heat is not visible after installation.



# QUIETwarmth

## Radiant Heat Film for Floating Floors

# MPglobal™

888.379.9695  
[www.QuietWarmth.com](http://www.QuietWarmth.com)