

WATER DISTILLER USER MANUAL



Read Carefully Before Use
Keep for Future Reference

Safety Information

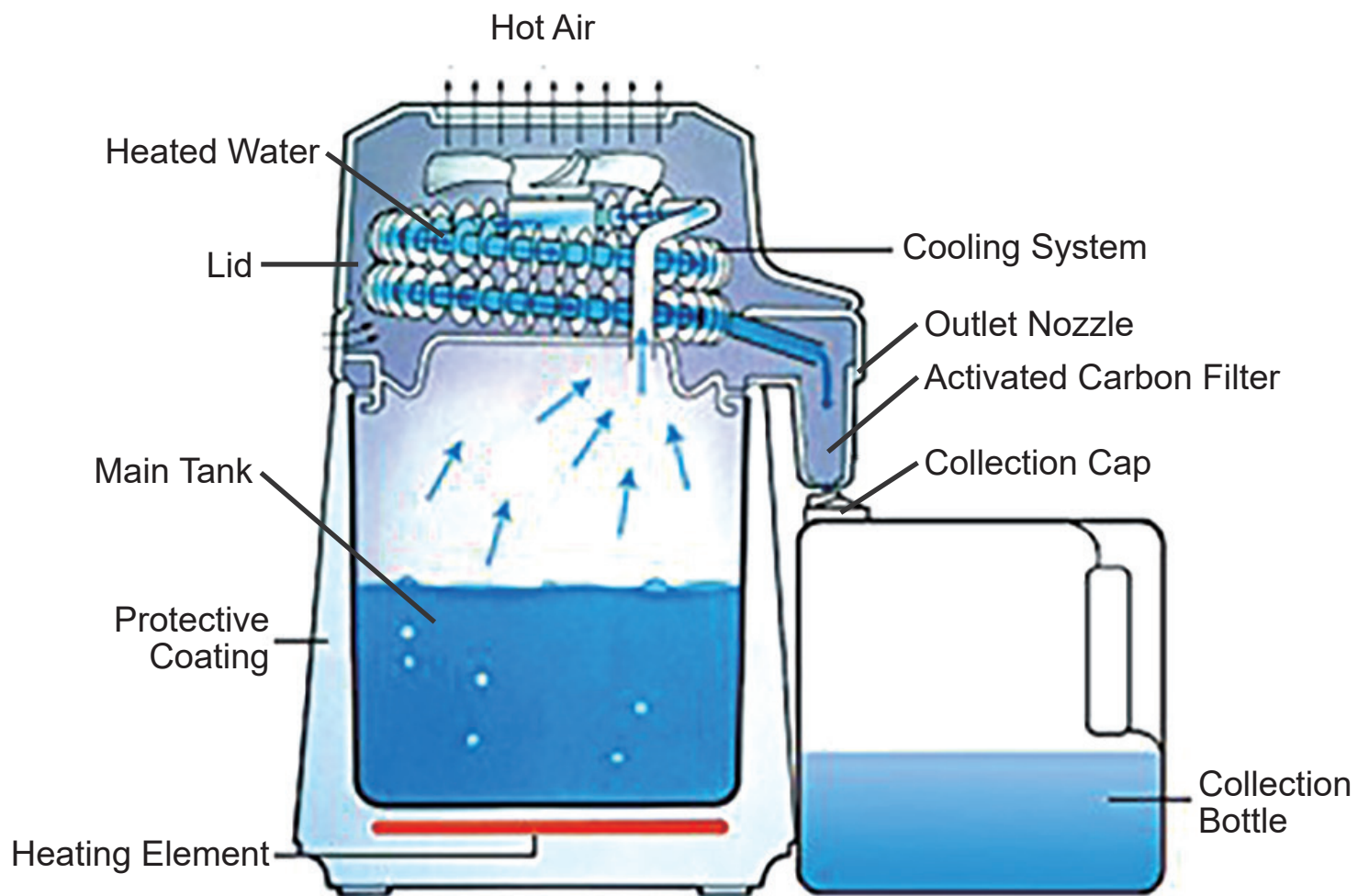
Warning!

- **ONLY** use this distiller with stable and compatible power sources.
- **DO NOT** let children or persons with impaired physical or mental capacities operate this device without strict supervision.
- **DO NOT** use this device when its outer casing is wet as this may lead to short circuits, fire, or electrocution.
- Be careful during use as this device produces **VERY** hot water vapor that can cause instant scalding. Always lift the lid to the side while avoiding the escaping steam. Do not lift the lid straight up.
- **DO NOT** use this device if its power cables are damaged in any way. Repair or replace the damaged wiring before use.
- **DO NOT** place the bottle into a cold environment after filling it with hot distilled water as this may cause it to crack or shatter.
- Disconnect the power to this device before performing any maintenance.

Specifications

	US	UK
Input Power	110–120V/60Hz	220–240V/50Hz
Rated Power	750W	750W
Volume of Water Tank	4.2 qt. or 1.1 gal. (4 L)	4 L (3.5 qt. or 0.88 gal.)
Processing Rate	1.1 qph or 0.26 gph (1 L/h)	1 L/h (0.88 qt./hr. or 0.22 gal./hr.)
Temperature Safety Cutoff	300°F (150°C)	150°C (300°F)
Net Weight	14 lb. (6.3 kg)	6.3 kg (14 lb.)
Dimensions	18.7 × 11 × 13.7 in. (47.5 × 28 × 35 cm)	47.5 × 28 × 35 cm (18.7 × 11 × 13.7 in.)

Product Diagram



Package List



1. Distiller

The distiller works by heating water into vapor and subsequently cooling it down so that it condenses back into water without its previous impurities.

2. Collection Bottle

This bottle collects your distilled water.

3. Collection Cap

This cap collects the distilled water & directs it into the bottle.

4. Bottle Cap

This cap seals the bottle between uses.

5. Activated Charcoal Filter

This filter absorbs smaller impurities that are not eliminated through distillation.

6. Power Cord

This cord connects any grounded (3-pronged) outlet to power the distiller's heating element.

7. Chamber Cleaning Powder

This powder is used to clean the distiller, specially designed not to damage its lining.

8. Instruction Manual

You're reading this.

9. Silicone Tube

This tube can be used to connect the distiller to another receptacle besides the provided bottle.

Setup

Bottle Assembly

Affix the handle onto the water bottle by placing one of the metal bands on the bottom groove of the bottle. Next, secure the band by placing a bolt through it and the bottom of the handle. Hand tighten the bolt with a nut. Repeat this step for the second band, affixing it to the top groove of the bottle.

To put the bottle cap onto the bottle, place the cap such that its grooves are aligned with the grooves on the bottle and turn clockwise until it is tight.

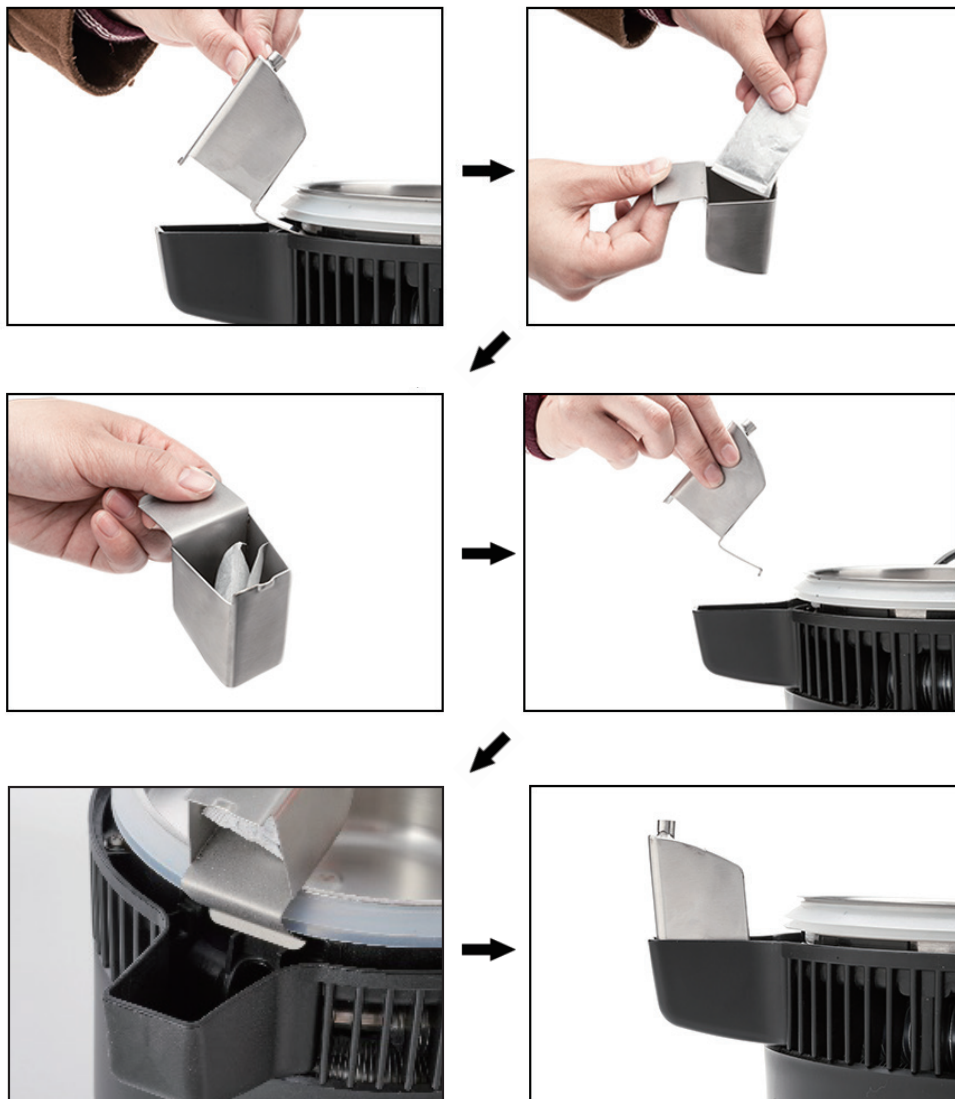


Distiller Assembly

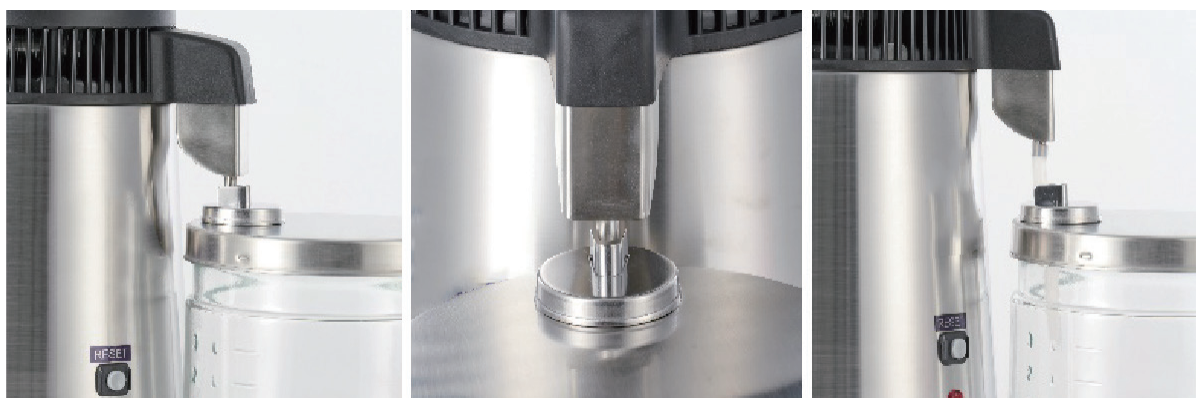
The silicone seal prevents water from escaping the distiller. When placing or replacing it, ensure that the rounded side is facing up.



Remove the outlet nozzle from the lid and insert the charcoal packet into it. Reattach and secure it onto the distiller's lid as shown. Check that the seal remains in place.



Align the collection cap with the distiller's spout. Optionally, use the provided silicone tubing to directly connect the spout with the bottle or another receptacle.



Operation

1. Open the distiller. Add water up to the maximum water level line.
2. Replace the top of the distiller and make sure it is properly sealed.
3. Plug in the power cord.
4. Press **Reset** to begin distillation cycle.

Water will begin to pour out of the distiller after about 30 minutes. It will take roughly 4 hours for a full distillation cycle to complete. Wait 10 minutes between cycles before adding water to start a new batch.

5. Wait 15 minutes once the distillation cycle ends before removing the lid cover. Open the lid to the side to avoid any escaping steam. Do not open the lid straight up or leave your hand where it might be scalded.

Maintenance

Disconnect the distiller from its power source and allow it to fully cool before undertaking any cleaning, maintenance, or repair.

Rinse and wipe the tank daily using clean water. Make sure it is dry when not in use. Calcium deposits and residue can accumulate on the stainless-steel lining. Monthly cleanings are recommended. To clean the tank:

1. Pour in hot water until all the residue is covered.
2. Add 1–4 teaspoons of the provided cleaning powder, depending on the amount of residue.
3. Wash the inside of the distiller's cap with a soft cloth.
4. Rinse these components with clean water, but do not allow any electrical component to become wet.
5. If there is any remaining residue, repeat this process.



Do not use corrosive agents or steel cleaning instruments as this may damage the stainless steel lining.

Cleaning the bottle should be done with warm soapy water. Never alternate between hot and cold water as this may damage the bottle.

The silicone seal should be removed and cleaned monthly. When placing it back onto the distiller's cap, ensure that the rounded side of the ring is placed facing up.

Troubleshooting

Possible Problems	Typical Solutions
Insufficient water comes out	Fill the tank to the line
	Check the silicone seal for wear or misplacement
	Correct the alignment of the spout and bottle or use the provided tube
Machine becomes jittery	Check the silicone seal for wear or misplacement
	Check that the filter is properly aligned with the bottle
Distilled water has an odd odor	Replace the charcoal filter
	Halt the distillation process for 10–15 minutes before its regular end point, to prevent it from running dry and burning residual minerals left by the water
Distilled water has black debris	Remove the damaged charcoal filter from the nozzle, clean the nozzle, and insert a new charcoal packet
The reset button has malfunctioned	Connect the distiller to a surge protector and turn it on and off using the surge protector's power switch

Contact Us

Thank you for choosing our products! If you have any questions or comments, contact us at help@cs-supportpro.com and we'll resolve your issue ASAP!

For a .pdf copy of the latest version of these instructions, use the appropriate app on your smartphone to scan the QR code to the right.

