



**Contact Us First**  
**DO NOT RETURN TO STORE**

For help with assembly  
or product information contact us at...

CALL:

**1-330-893-4212**

EMAIL:

**support@cottagekits.com**

LIVE CHAT:

**www.cottagekits.com**

**SUPPORT HOURS**

Monday-Friday 8:00 am to 4:30 pm EST

(This page intentionally left blank.)

LITTLE COTTAGE CO.

**Value Workshop****ASSEMBLY INSTRUCTION MANUAL**

UNITS WITH ONE WINDOW

**SIZES:**  
8x8, 8x10, 10x10



UNITS WITH TWO WINDOWS

**SIZES:**  
8x12, 8x14, 8x16, 10x12, 10x14, 10x16, 10x18, 10x20,  
12x12, 12x14, 12x16, 12x18, 12x20, 12x24

**TOOLS NEEDED:**

- Cordless Drill (12 V or Higher)
- #2 Square Drive Bit
- Hammer
- 6' Step Ladder
- Tape Measure
- Square Utility Knife with Blade and Hook Blade
- Speed Square
- Tin Snips

**ITEMS TO PURCHASE:**

- Shingles
- Drip Edge
- Paint
- Caulk, Optional
- Runners, Optional

For Quantities See The Kit Packing List Included

**LITTLE COTTAGE CO.**

OFFICE: 4550 SR 39, Millersburg, OH 44654

MAILING: PO Box 455, Berlin, OH 44610

[www.cottagekits.com](http://www.cottagekits.com)**Have Questions?****CALL: 330-893-4212****EMAIL: [support@cottagekits.com](mailto:support@cottagekits.com)****CHAT: Visit [cottagekits.com](http://cottagekits.com) & Live Chat With Us****SUPPORT HOURS: Mon.-Fri. 8:00am to 4:30pm EST**

VALUE  
WORKSHOP



# VALUE WORKSHOP ASSEMBLY INSTRUCTION MANUAL

[ SUPPORT HOURS: MON.-FRI. 8:00 AM - 4:30 PM EST ]

**THANK YOU** for purchasing from Little Cottage Company!

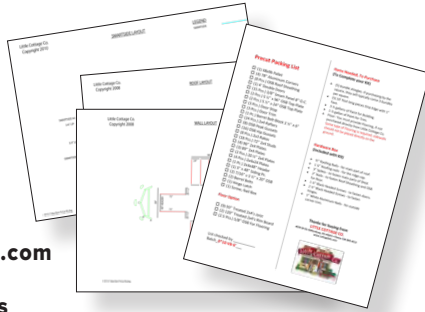
If you have questions during assembly, please don't hesitate to contact us.

**CALL: 330-893-4212**

**EMAIL: [support@cottagekits.com](mailto:support@cottagekits.com)**

**CHAT: Visit [cottagekits.com](http://cottagekits.com) and Live Chat With Us**

**SUPPORT HOURS: Mon.-Fri. 8:00am to 4:30pm EST**



**1. TO BEGIN CONSTRUCTION** of your new building, first locate the Layout diagrams (Wall, Roof, etc.) along with the Kit Packing List that is included with your assembly manual. **Please see the Kit Packing List for items you will need to purchase to help assemble this kit.** You will be following the Layout diagrams provided for placement and using this Assembly Manual as a guideline.

NOTE: A 10x14 building was used for the pictures shown in this assembly manual.



**2.** Using the FLOOR DIAGRAM LAYOUT sheet, locate your rim and floor joist and lay them out.



**3.** Start at the corner and use the square to make sure the corner is flush and fasten with 3" nails.



**4.** Next square up the floor. To square the floor, use a tape measure to find the distance from one corner to the other, then measure the diagonal between the remaining 2 corners. If the two measurements are the same, then your floor is already squared. If they aren't, adjust the floor until the measurements are the same.



**5.** Set OSB sheathing in place, using the speed square, make sure the OSB is flush with the 2x4 on both sides.



**6.** Secure the OSB sheathing in place by fastening it with 2" nails to the 2x4's every 6-8 inches.





# VALUE WORKSHOP ASSEMBLY INSTRUCTION MANUAL

[ SUPPORT HOURS: MON.-FRI. 8:00 AM - 4:30 PM EST ]



**7.** Using the WALL DIAGRAM LAYOUT sheet, locate the 2x4 wall plates for the wall section as shown.



**8.** To create the wall interior, fasten the 2x4 studs with 3" nails, in between the 2x4 top and bottom plates.



**9.** Next place the 2x4's for the windows. Check the SMARTSIDE LAYOUT sheets for window placement. Note: The 8x8, 8x10, 10x10 will only have one window. Fasten with 3" nails.



**10.** Install the 2x4 header and fasten with 3" nails.



**11.** Next locate the Smartside siding. Refer to the SMARTSIDE LAYOUT sheet for the placement of siding on top of the 2x4 studs.



**12.** Make sure the corners of the siding are flush with the corners of the 2x4 studs, as shown.





# VALUE WORKSHOP ASSEMBLY INSTRUCTION MANUAL

[ SUPPORT HOURS: MON.-FRI. 8:00 AM - 4:30 PM EST ]



**13.** Next make sure the top of the siding is flush with 2x4 studs.



**14.** Make sure the outside corners are flush as shown before fastening with the 2" nails. *Note: There will be a 3" skirt at the bottom.*



**15.** Continuing with Smartside siding installation, place the header piece into place.



**16.** Fasten the header piece with 2" nails as shown.



**17.** Next install door stops as shown. Keep flush with the top of 2x4 (not the Smartside) and secure with 2" nails.



**18.** Install the trim block in the center of the header and secure with 2" nails.





# VALUE WORKSHOP ASSEMBLY INSTRUCTION MANUAL

[ SUPPORT HOURS: MON.-FRI. 8:00 AM - 4:30 PM EST ]



**19.** Install the 2 3/4" trim around the door. Secure the trim with 2" nails, staying at least 1 1/4" in from the inside edge, so they do not interfere with the hinge screws later.



**20.** Lay wall to side as shown.



**21.** Using the WALL LAYOUT DIAGRAM sheet build the next wall as shown.



**22.** Install the Smartside siding, making sure the siding is flush with the 2x4 top plate and end stud.



**23.** Continue installing the Smartside siding. Note: There will be a 3" skirt at the bottom.



**24.** Continue installing, keeping the top-side flush.





# VALUE WORKSHOP ASSEMBLY INSTRUCTION MANUAL

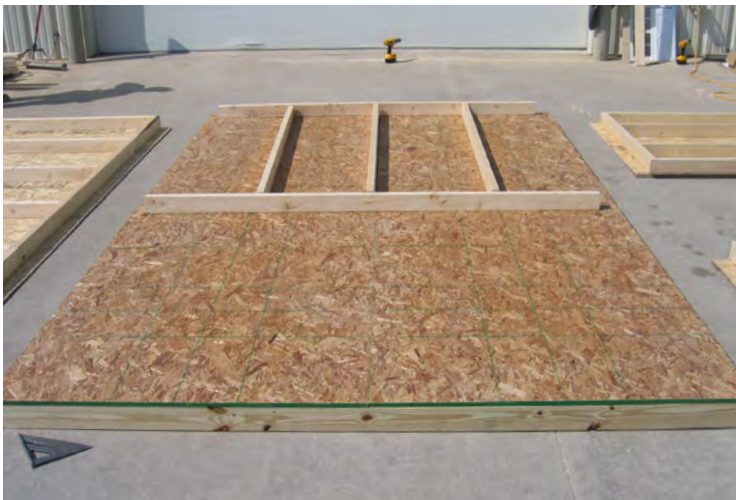
[ SUPPORT HOURS: MON.-FRI. 8:00 AM - 4:30 PM EST ]



**25.** Continue with Smartside and fasten with 2" nails every 6 to 8 inches.



**26.** Lay wall to the side as shown.



**27.** Using the WALL LAYOUT DIAGRAM sheet, locate the wall plates and studs as shown.



**28.** Secure with 3" nails as shown.



**29.** Using the WALL LAYOUT DIAGRAM sheet, locate the truss pieces, layout and fasten with 3" nails as shown.



**30.** Measure out 3 7/8" from the edge of the top plate to the end of the truss.





# VALUE WORKSHOP ASSEMBLY INSTRUCTION MANUAL

[ SUPPORT HOURS: MON.-FRI. 8:00 AM - 4:30 PM EST ]



**31.** Secure the truss to the top plate with 3" nails.



**32.** Refer to the SMARTSIDE LAYOUT SHEET for gable end siding placement. Install the Smartside making sure it is 3" from the bottom of the 2x4 to the bottom of the wall.



**33.** Secure with 2" nails.



**34.** Secure with 2" nails every 6" to 8" on center.



**35.** Lay wall to the side as shown.



**36.** Continue with the opposite gable end, repeating steps 32-34.





# VALUE WORKSHOP ASSEMBLY INSTRUCTION MANUAL

[ SUPPORT HOURS: MON.-FRI. 8:00 AM - 4:30 PM EST ]



**37.** Make sure the small piece of Smartside is installed at the top. Note: Check your SMARTSIDE LAYOUT to see if your size building requires this piece. Repeat with the opposite wall.



**38.** For rake installation, measure 2" from the edge of the Smartside siding, and mark with pencil as shown.



**39.** Continue using the same method as step 38.



**40.** Now install the rakes. Keeping them flush at the bottom and secure with 3" nails.



**41.** This is what the walls will look like when complete.



**42.** Now install the first wall, standing it up on the floor.





# VALUE WORKSHOP ASSEMBLY INSTRUCTION MANUAL

[ SUPPORT HOURS: MON.-FRI. 8:00 AM - 4:30 PM EST ]



**43.** Make sure the wall is flush on the end and put pressure on the outside as shown, fasten with 3" nails.



**44.** Fasten with 3" nails 16" on center.



**45.** Make sure you have 48" or 60" (depending on the building width) in between the door opening, 48" on 8' wide buildings and 60" on 10' and wider buildings.



**46.** Continue with walls as shown.



**47.** Continue with walls as shown.



**48.** Fasten outside corner as shown with 2" nails.





# VALUE WORKSHOP ASSEMBLY INSTRUCTION MANUAL

[ SUPPORT HOURS: MON.-FRI. 8:00 AM - 4:30 PM EST ]



**49.** Fasten with 2" nails.



**50.** Make sure the walls are in place, and secure with 3" nails.



**51.** Next nail the bottom of the building with 2" nails 8" on center all the way around the building.



**52.** Nail the corners every 6" to 8" with 2" nails.



**53.** Next locate the truss parts.



**54.** Install the truss gussets as shown and secure with 2" nails.





# VALUE WORKSHOP ASSEMBLY INSTRUCTION MANUAL

[ SUPPORT HOURS: MON.-FRI. 8:00 AM - 4:30 PM EST ]



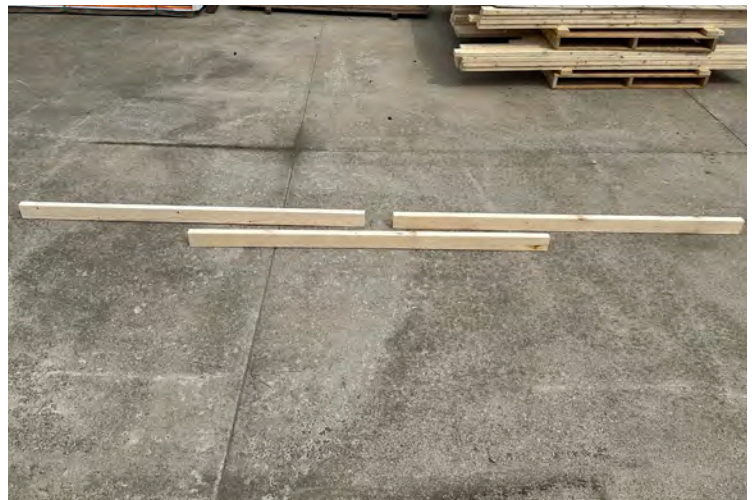
**55.** Flip the truss around and do the same with the gusset. Repeat with remaining trusses.



**56.** Next hang trusses on the walls as shown.



**57.** Install the trusses as shown, making sure they are 24" on center before fastening with 3" nails. NOTE: The amount of trusses may vary depending on your building size.



**58.** Next you will be installing the collar ties. Check your packing lists for collar tie amounts/pieces. Note: Some units will not get a collar tie. If that is the case you can skip steps 58-60.



**59.** You may need to splice your collar ties together depending on what size building you have. 8x14 and 8x16 units will have one collar tie and wont need spliced. 10x14 thru 10x20 and 12x14 thru 12x20 buildings will have three pieces which will make one collar tie after it is spliced together. 12x24 buildings will have six pieces which will make two sets of collar ties after they are spliced together. To splice them, overlap the three pieces as shown and nail together using 3" nails.



**60.** Using the position placement below, set the collar ties into place onto the top plate, on each side of the building. For 8x14, 8x16, 10x14 thru 10x20 and 12x14 thru 12x20 buildings the collar tie will go in the center of the building. For 12x24 buildings the collar ties will go 8 feet in from each end. Fasten the collar ties to the trusses using 3" nails.





# VALUE WORKSHOP ASSEMBLY INSTRUCTION MANUAL

[ SUPPORT HOURS: MON.-FRI. 8:00 AM - 4:30 PM EST ]



**61.** Next, install 2 3/4" trim as shown, keep flush with the outside of the rake and fasten with 2" nails.



**62.** Continue with 2 3/4" trim.



**63.** Install the trim on the front side as shown.



**64.** Next, following your ROOF LAYOUT sheet, install roof sheeting and fasten with 2" nails.



**65.** Continue with the roof sheeting.



**66.** Make sure the trusses are 24" on center before fastening sheeting.





# VALUE WORKSHOP ASSEMBLY INSTRUCTION MANUAL

[ SUPPORT HOURS: MON.-FRI. 8:00 AM - 4:30 PM EST ]



**67.** Continue with roof sheathing until its complete on both sides of the roof.



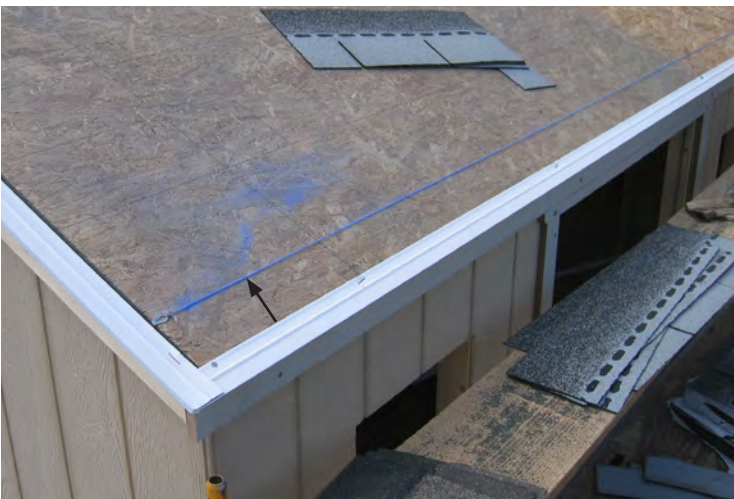
**68.** Next install the drip edge as shown (drip edge not included - see kit packing list for amount of drip edge you will need to purchase).



**69.** Continue with drip edge.



**70.** Use the tin snips to cut drip edge so it will bend.



**71.** Installing Shingles: (Shingles not included - see kit packing list for amount of shingles you will need to purchase). Snap a chalk line along the roof sheathing consistent with the width of the shingle starter strip.



**72.** Consult the instructions provided with your shingle package. Install the first starter strip along the chalk line as shown.





# VALUE WORKSHOP ASSEMBLY INSTRUCTION MANUAL

[ SUPPORT HOURS: MON.-FRI. 8:00 AM - 4:30 PM EST ]



**73.** Continue with starter strips.



**74.** Install shingles in a staggered fashion.



**75.** Continue with shingles as shown.



**76.** Cut the ridge caps and install the first one as shown.



**77.** Continue placing the ridge cap, as shown.



**78.** You can finish with a smaller cap with no adhesion strip.





# VALUE WORKSHOP ASSEMBLY INSTRUCTION MANUAL

[ SUPPORT HOURS: MON.-FRI. 8:00 AM - 4:30 PM EST ]



**79.** Locate the window, shutters and trim.



**80.** Install the window and fasten with 2" nails as shown.



**81.** Next install the shutters and secure with provided screws for shutters.



**82.** Install the top 2 3/4" trim piece as shown and secure with 2" nails.



**83.** Next install the 2 3/4" bottom trim with 2" nails.



**84.** Locate 3" Smartside siding pieces and keep flush with the top of the floor and secure with 2" nails.





# VALUE WORKSHOP ASSEMBLY INSTRUCTION MANUAL

[ SUPPORT HOURS: MON.-FRI. 8:00 AM - 4:30 PM EST ]



**85.** For door installation, you will be using three hinges per side. Use one 2 1/2" black headed screw, per hinge. Fill the remaining screw holes with 1 1/4" screws. This is done for both doors.



**86.** Continue Installing the screws.



**87.** Install the remaining door in the same manner.



**88.** Locate the barrel bolts. Install one barrel bolt to the bottom of the door as shown with 1 1/4" screws.



**89.** Install the top barrel bolt as shown.



**90.** Use the hammer to tap on the bottom barrel bolt to locate where to drill your 5/16" hole.





# VALUE WORKSHOP ASSEMBLY INSTRUCTION MANUAL

[ SUPPORT HOURS: MON.-FRI. 8:00 AM - 4:30 PM EST ]



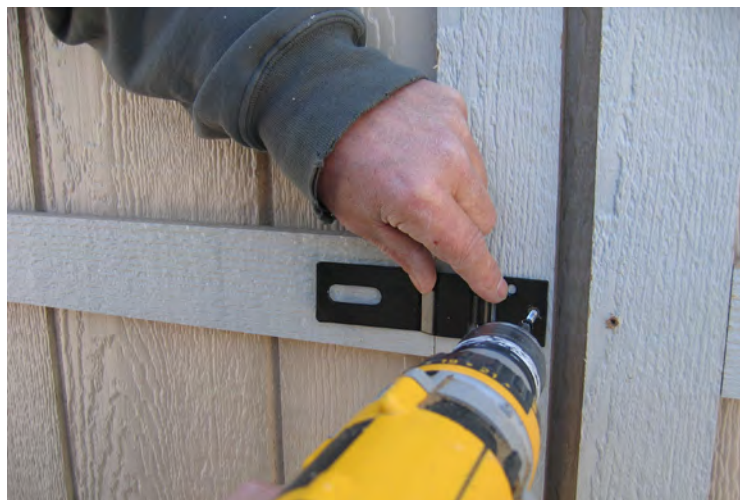
**91.** Drill a 5/16" hole as shown.



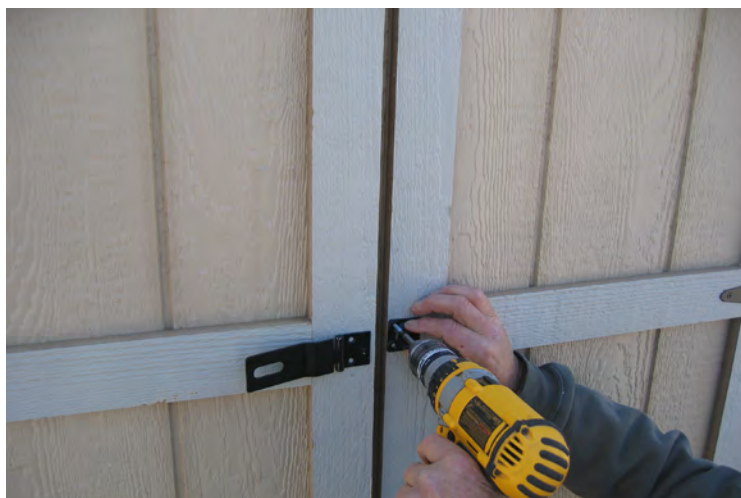
**92.** Tap on the top barrel bolt to locate where to drill your 5/16" hole.



**93.** Drill a 5/16" hole for the barrel bolt.



**94.** Locate the latch. Install half of the latch, as pictured, on one of the doors, with 1 1/4" screws.



**95.** Line up and install the other half of the latch on the opposite door.



**96.** Locate the aluminum corner trim. Fasten the trim onto all four corners of the building with white finish nails.





# VALUE WORKSHOP ASSEMBLY INSTRUCTION MANUAL

[ SUPPORT HOURS: MON.-FRI. 8:00 AM - 4:30 PM EST ]

---



**97.** Construction is now complete and your primed building is now ready for paint. Refer to the Kit Packing List for the required paint quantities to purchase.