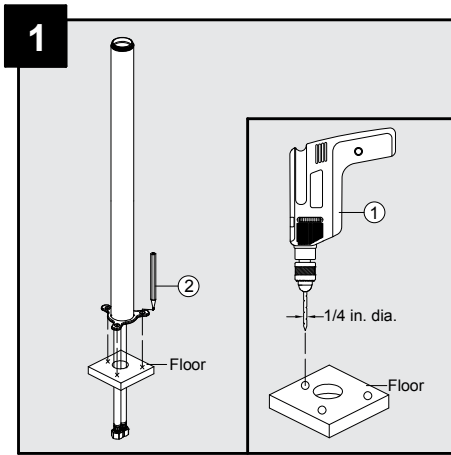
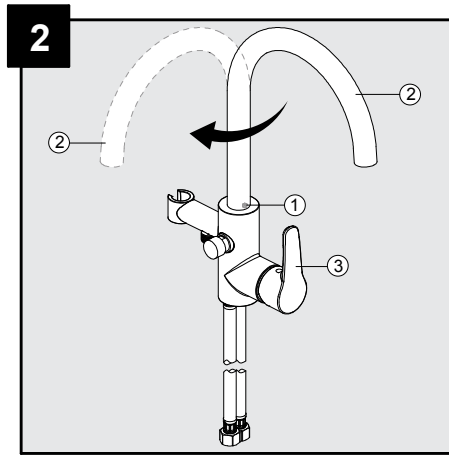


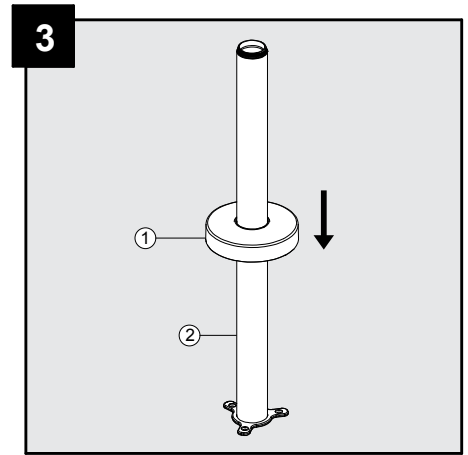
ASSEMBLY INSTRUCTIONS



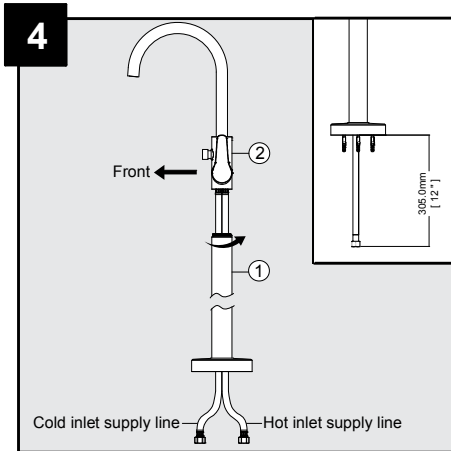
Drill a hole 2 1/4 in. diameter min. - 2 9/16 in. diameter max. in the floor with an electric drill (1). Mark the locations for the screws with a pencil (2). Then drill three holes 1/4 in. diameter for the screws in the floor with an electric drill (1).



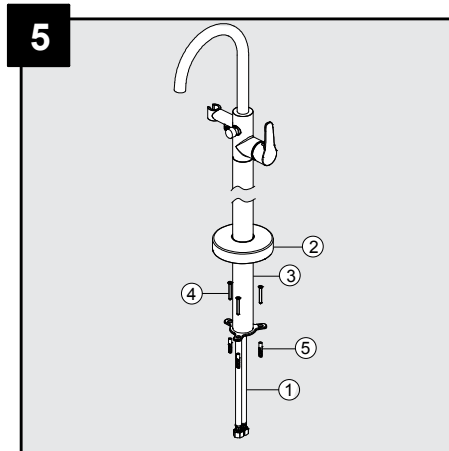
Loosen the set screw (1) pre-assembled to the spout (2), rotate the spout (2) about 90° to align handle (3), then tighten the screw.



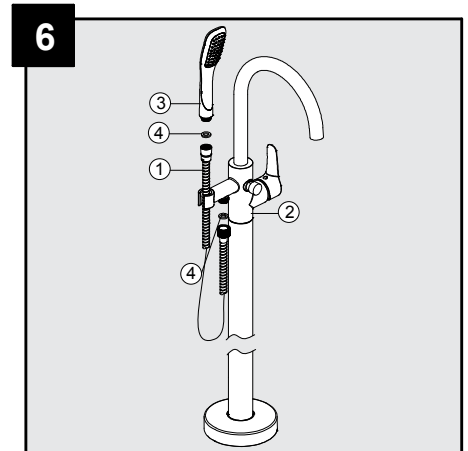
Place the escutcheon (1) over the standpipe (2) and then push it to the base.



Screw the standpipe (1) onto the mixer (2) by hand. Turn in a clockwise direction until it is tight.
 Note 1: Do not to reverse the cold and hot supply lines.
 Note 2: After installing the standpipe (1), the inlet supply lines will be exposed 12 in. below the standpipe. Please pay attention to set aside enough space to connect the water supply lines and prevent the water inlet supply lines from twisting.

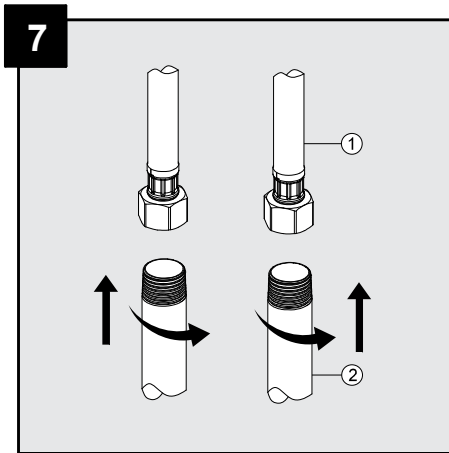


Place the assembly with the flexible supply lines (1) through the prepared hole. Then holding the escutcheon (2), secure the standpipe (3).
 Note: If mounting into wooden floor, secure the standpipe (3) using screws (4) only (wall plugs are not needed). If mounting into solid floor, mark the position of holes first and then secure the standpipe (3) using anchors (5) and screws (4). Where required ensure correct anchors for your floor type are used.

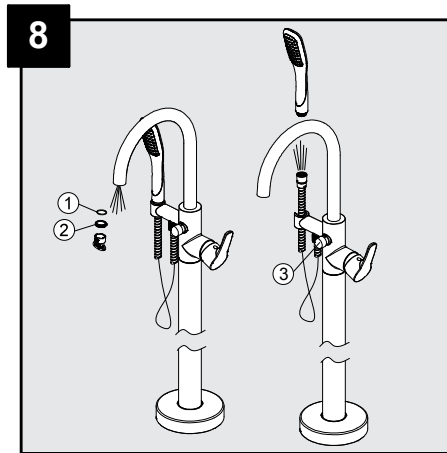


Connect one end of the shower hose (1) to the mixer (2) and the other end to the hand shower (3). Ensure the washer (4) is in each end for seal.

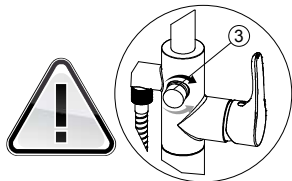
ASSEMBLY INSTRUCTIONS



Connect the flexible supply lines (1) to the water supplies (2).



Flushing debris and checking for water leaks:
Important: After installation is complete, remove the aerator (2) with the plastic wrench to flush debris from the water lines. Do not lose the o-ring(1) in the aerator(2). Turn on the water supply and allow both hot and cold water to run for at least one minute each. Remove hand shower and push the diverter pin button (3) to the bottom position. This will divert water to the hand shower. Run for at least one minute. This flushes away any debris that could cause damage or blockage to internal parts. Check for water leaks. After flushing, completely shut off water, and reinstall the aerator (2). The diverter pin button (3) should auto-reset back into the outward position. Retighten any water/hose connections if necessary, but be careful to not overtighten to prevent damage.



Diverter Instructions : To divert water from the faucet spout to the hand shower, push in the diverter pin (3) to the bottom position. To divert water back to faucet spout, turn the water completely off, and then on again. The diverter pin (3) will auto-reset back into the outward position. If the diverter pin (3) does not auto-reset back into the outward position, then gently rotate the diverter pin (3) button left or right while the water is shut off, and it should easily reset back to the outward position.

CAUTION: While water is running through the hand shower, the diverter will not pull outward to reset to the faucet spout unless the water is shut off and turned on again. **DO NOT FORCIBLY PULL THE DIVERTER PIN (3) OUTWARD WHILE WATER IS RUNNING.** This can cause damage to the diverter pin (3) assembly.

CARE AND MAINTENANCE

- Clean periodically with a soft cloth. Avoid abrasive cleaners, steel wool, and harsh chemicals as these will dull the finish and void your warranty.

TROUBLESHOOTING

PROBLEM	POSSIBLE CAUSE	CORRECTIVE ACTION
There is a leak from under the handle or there is a leak from aerator when the faucet is off.	The cartridge is damaged.	Remove the handle and replace the cartridge.
There is a leak from aerator when the faucet is on.	The aerator does not fit correctly on the faucet.	1. Remove and reinstall the aerator. 2. Call customer service for a new aerator and replace it after you receive the new aerator assembly.
The aerator has an irregular or reduced water flow.	The aerator is dirty.	Remove the aerator and clear the debris.
Hand shower leaks or has a low flow pattern.	Hand shower is dirty or damaged.	Remove the hand shower and check for any debris clogged at the shower connection, check the hand shower's spray nozzle for any build up or debris.