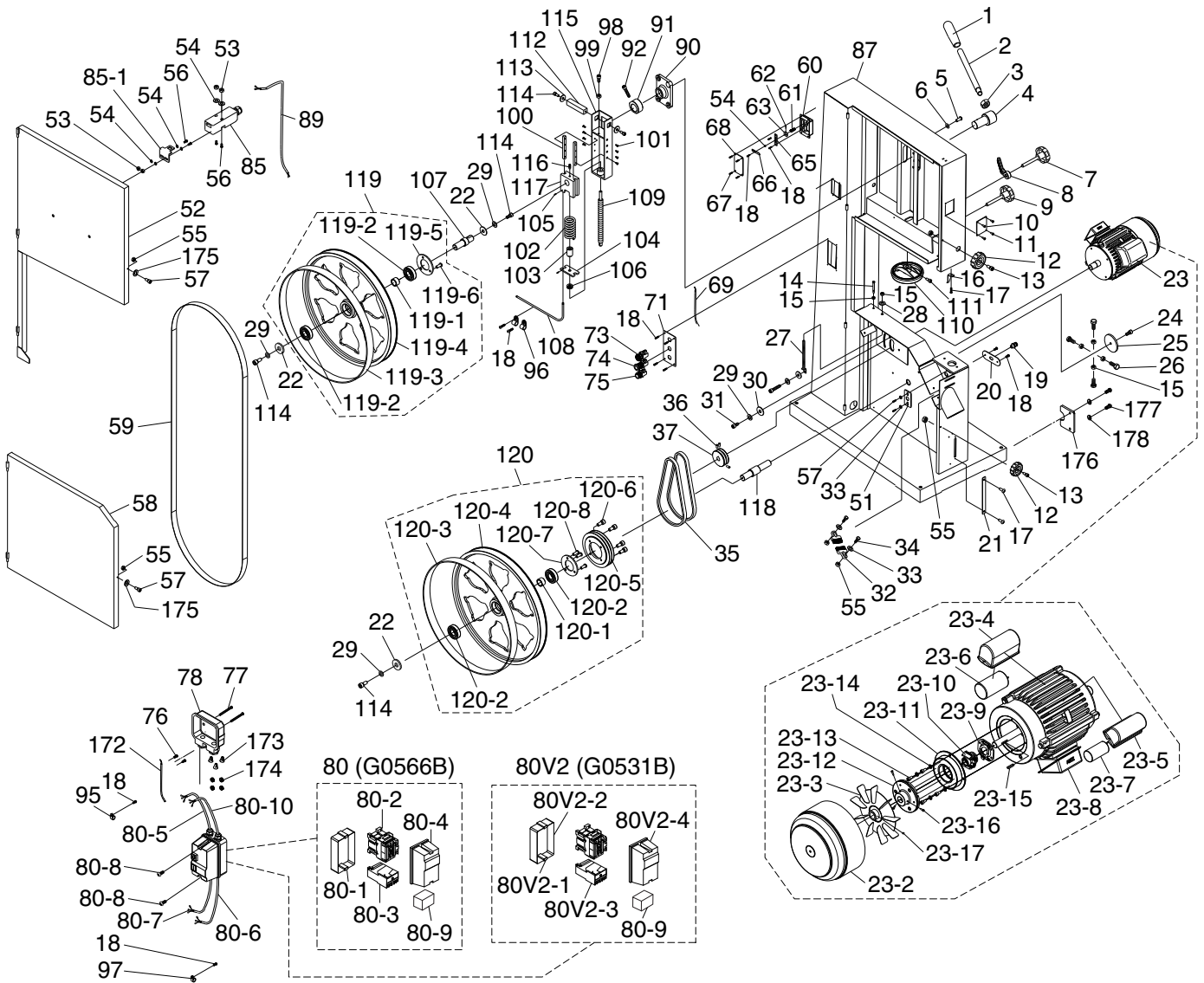


Main



Main Parts List

REF	PART #	DESCRIPTION
1	P0566B001	HANDLE KNOB M16-1.5
2	P0566B002	HANDLE SHAFT
3	P0566B003	HEX NUT M16-1.5
4	P0566B004	ECCENTRIC SHAFT
5	P0566B005	BUTTON HD CAP SCR M10-1.5 X 20
6	P0566B006	LOCK WASHER 10MM
7	P0566B007	KNOB SCREW M10-1.5 X 25
8	P0566B008	LOCK HANDLE M10-1.5
9	P0566B009	KNOB SCREW M10-1.5 X 25
10	P0566B010	WINDOW, PLASTIC
11	P0566B011	RIVET 3 X 10MM NAMEPLATE, STEEL
12	P0566B012	LATCH KNOB 6MM
13	P0566B013	CAP SCREW M6-1 X 20
14	P0566B014	HEX BOLT M10-1.5 X 70
15	P0566B015	HEX NUT M10-1.5
16	P0566B016	HEIGHT POINTER
17	P0566B017	FLANGE SCREW M5-.8 X 10
18	P0566B018	TAP SCREW M4 X 10
19	P0566B019	STRAIN RELIEF PG 13.5
20	P0566B020	PLATE
21	P0566B021	STEP COVER
22	P0566B022	FENDER WASHER 8MM
23	P0566B023	MOTOR 3HP 230V 1-PH W/BRAKE (G0566B)
23	P0531B023	MOTOR 5HP 230V 1-PH W/BRAKE (G0531B)
23-2	P0566B023-2	MOTOR FAN COVER (G0566B)
23-2	P0566B023-2	MOTOR FAN COVER (G0531B)
23-3	P0566B023-3	MOTOR FAN (G0566B)
23-3	P0566B023-3	MOTOR FAN (G0531B)
23-4	P0566B023-4	R CAPACITOR COVER (G0566B)
23-4	P0566B023-4	R CAPACITOR COVER (G0531B)
23-5	P0566B023-5	S CAPACITOR COVER (G0566B)
23-5	P0566B023-5	S CAPACITOR COVER (G0531B)
23-6	P0566B023-6	R CAPACITOR 40M 450V 2 X 3-7/16 (G0566B)
23-6	P0566B023-6	R CAPACITOR 45M 450V (G0531B)
23-7	P0566B023-7	S CAPACITOR 200M 250V 1-3/4 X 3-1/2 (G0566B)
23-7	P0566B023-7	S CAPACITOR 300M 250V 2 X 4 (G0531B)
23-8	P0566B023-8	JUNCTION BOX (G0566B)
23-8	P0566B023-8	JUNCTION BOX (G0531B)
23-9	P0566B023-9	CONTACT PLATE (G0566B)
23-9	P0566B023-9	CONTACT PLATE (G0531B)
23-10	P0566B023-10	CENTRIFUGAL SWITCH (G0566B)
23-10	P0566B023-10	CENTRIFUGAL SWITCH (G0531B)
23-11	P0566B023-11	MAGNETIC BRAKE W/SHOE (G0566B)
23-11	P0566B023-11	MAGNETIC BRAKE W/SHOE (G0531B)
23-12	P0566B023-12	BRAKE SHOE (G0566B)
23-12	P0566B023-12	BRAKE SHOE (G0531B)
23-13	P0566B023-13	CAP SCREW M6-1 X 12 (G0566B)
23-13	P0566B023-13	CAP SCREW M6-1 X 12 (G0531B)
23-14	P0566B023-14	LOCK WASHER 6MM (G0566B)
23-14	P0566B023-14	LOCK WASHER 6MM (G0531B)
23-15	P0566B023-15	KEY 5 X 5 X 25 (G0566B)
23-15	P0566B023-15	KEY 5 X 5 X 25 (G0531B)
23-16	P0566B023-16	CAP SCREW M5-.8 X 16 (G0566B)
23-16	P0566B023-16	CAP SCREW M5-.8 X 16 (G0531B)
23-17	P0566B023-17	SET SCREW M6-1 X 6 (G0566B)
23-17	P0566B023-17	SET SCREW M6-1 X 6 (G0531B)

REF	PART #	DESCRIPTION
24	P0566B024	BUTTON HD CAP SCR M8-1.25 X 25
25	P0566B025	WHEEL SHAFT COVER
26	P0566B026	HEX BOLT M10-1.5 X 35
27	P0566B027	ADJUST BOLT
28	P0566B028	FLAT WASHER 10MM
29	P0566B029	LOCK WASHER 8MM
30	P0566B030	FLAT WASHER 8MM
31	P0566B031	CAP SCREW M8-1.25 X 25
32	P0566B032	WHEEL BRUSH
33	P0566B033	FLAT WASHER 6MM
34	P0566B034	CAP SCREW M6-1 X 25
35	P0531B035	V-BELT 17-320 (G0531B)
35	P0566B035	V-BELT 17-320 (G0566B)
36	P0566B036	SET SCREW M6-1 X 12
37	P0566B037	MOTOR PULLEY
51	P0566B051	BRACKET
52	P0566B052	UPPER WHEEL COVER
53	P0566B053	HEX NUT M4-.7
54	P0566B054	FLAT WASHER 4MM
55	P0566B055	LOCK NUT M6-1
56	P0566B056	PHLP HD SCR M4-.7 X 10
57	P0566B057	CAP SCREW M6-1 X 10
58	P0566B058	LOWER WHEEL COVER
59	P0566B059	SAW BLADE 164" X 1" X 0.035" HOOK
60	P0566B060	UPPER WHEEL SLIDING BRACKET
61	P0566B061	COMPRESSION SPRING 1 X 8 X 40
62	P0566B062	ROLL PIN 3 X 12
63	P0566B063	SLIDING PLATE
65	P0566B065	TENSIONS INDICATOR PLATE
66	P0566B066	TENSION POINTER
67	P0566B067	TAP SCREW M4 X 16
68	P0566B068	TENSION SCALE
69	P0566B069	CONNECTING WIRE 16G
71	P0566B071	SWITCH PLATE
73	P0566B073	KEY SWITCH 22
74	P0566B074	E-STOP BUTTON 250V 10A
75	P0566B075	START SWITCH 22
76	P0566B076	PHLP HD SCR M4-.7 X 10
77	P0566B077	FLANGE SCREW M5-.8 X 50
78	P0566B078	TERMINAL BOX
80	P0566B080	MAG SWITCH SDE MPE-18 (G0566B)
80V2	P0531B080V2	MAG SWITCH SDE MPE-30 V2.08.13 (G0531B)
80-1	P0566B080-1	MAG SWITCH BACK COVER (G0566B)
80V2-1	P0531B080V2-1	MAG SWITCH BACK COVER MPE-30 (G0531B)
80-2	P0566B080-2	CONTACTOR SDE MA-18 230V (G0566B)
80V2-2	P0531B080V2-2	CONTACTOR SDE MA-30 230V (G0531B)
80-3	P0566B080-3	RELAY SDE RA-20 12-18A (G0566B)
80V2-3	P0531B080V2-3	RELAY SDE RA-30 18-26A (G0531B)
80-4	P0566B080-4	MAG SWITCH FRONT COVER (G0566B)
80V2-4	P0531B080V2-4	MAG SWITCH FRONT COVER MPE-30 (G0531B)
80-5	P0566B080-5	POWER CORD 12G 3W
80-6	P0566B080-6	CONTROL PANEL CORD 16G 5W
80-7	P0566B080-7	MOTOR CORD 12G 3W
80-8	P0566B080-8	FLANGE SCREW M5-.8 X 10
80-9	P0566B080-9	RECTIFIER PU-23-2
80-10	P0566B080-10	BRAKE CORD 18G 2W



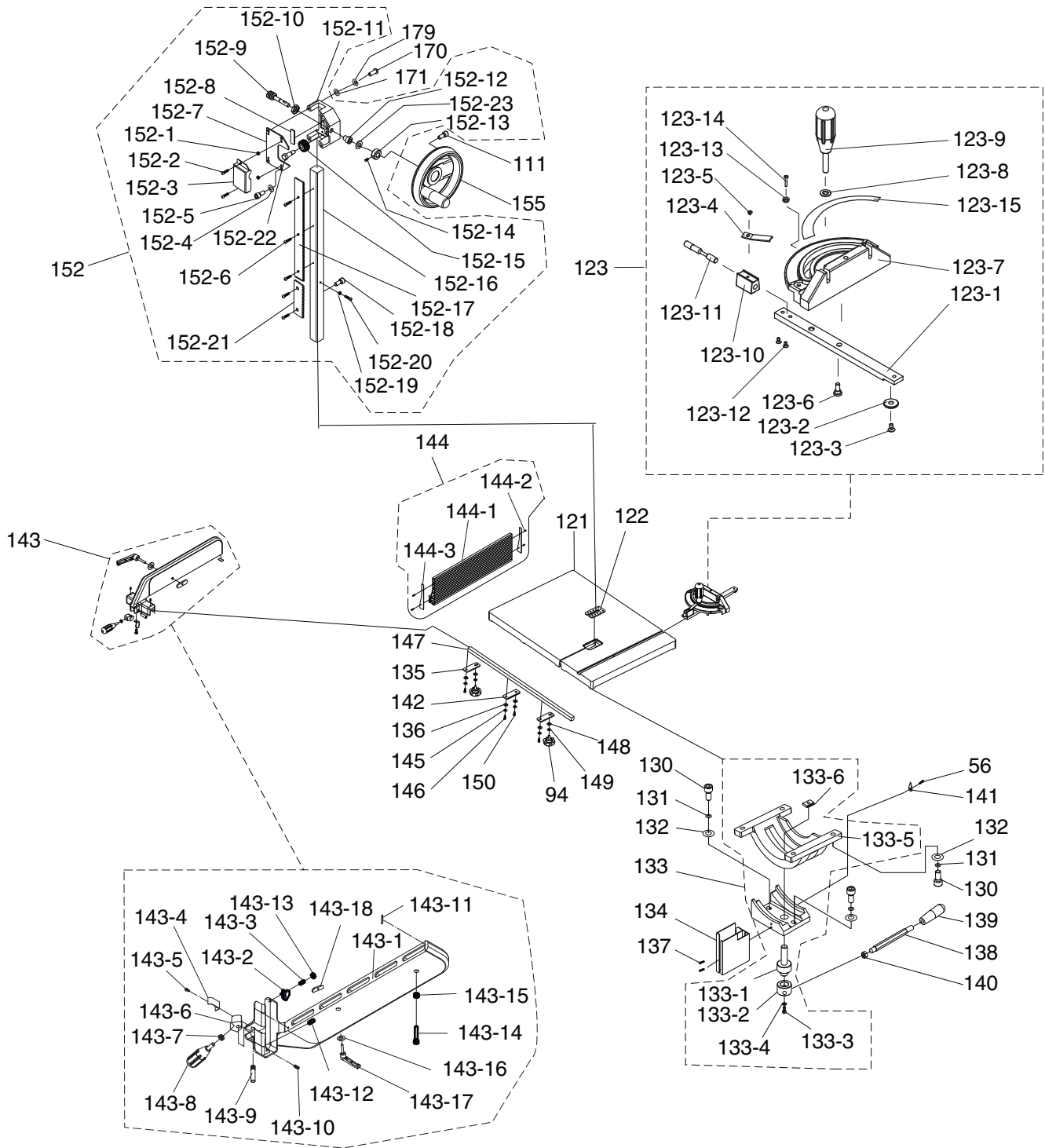
Main Parts List (Cont.)

REF	PART #	DESCRIPTION
85	P0566B085	DOOR LATCH SWITCH ASM ADZ-S11
85-1	P0566B085-1	DOOR LATCH SWITCH PLATE
87	P0566B087	MACHINE BODY
89	P0566B089	SWITCH CORD 18G 2W
90	P0566B090	GUIDE BLOCK
91	P0566B091	CAM
92	P0566B092	CAP SCREW M8-1.25 X 25
95	P0566B095	CORD CLAMP 1/2"
96	P0566B096	CORD CLAMP 5/16"
97	P0566B097	CORD CLAMP 3/8"
98	P0566B098	CAP SCREW M8-1.25 X 50
99	P0566B099	HEX NUT M8-1.25
100	P0566B100	SLIDING BAR
101	P0566B101	FLAT HD SCR M5-.8 X 16
102	P0566B102	COMPRESSION SPRING
103	P0566B103	BUSHING
104	P0566B104	SPRING BASE
105	P0566B105	SET SCREW M5-.8 X 5
106	P0566B106	THRUST BEARING 51201
107	P0566B107	UPPER WHEEL SHAFT
108	P0566B108	TENSION LINE
109	P0566B109	ADJUSTING BOLT
110	P0566B110	BLADE TENSION HANDWHEEL
112	P0566B112	SQUARE SHAFT
113	P0566B113	FLAT WASHER 8MM
114	P0566B114	CAP SCREW M8-1.25 X 20
115	P0566B115	UPPER WHEEL HINGE ASSEMBLY

REF	PART #	DESCRIPTION
116	P0566B116	SET SCREW M10-1.5 X 16
117	P0566B117	GUIDE BLOCK
118	P0566B118	LOWER WHEEL SHAFT
119	P0566B119	UPPER WHEEL ASSEMBLY
119-1	P0566B119-1	BUSHING
119-2	P0566B119-2	BALL BEARING 6205-2RS
119-3	P0566B119-3	WHEEL TIRE 21"
119-4	P0566B119-4	UPPER WHEEL 21"
119-5	P0566B119-5	UPPER WHEEL SHAFT PLATE
119-6	P0566B119-6	CAP SCREW M6-1 X 8
120	P0566B120	LOWER WHEEL ASSEMBLY
120-1	P0566B120-1	BUSHING
120-2	P0566B120-2	BALL BEARING 6205-2RS
120-3	P0566B120-3	WHEEL TIRE 21"
120-4	P0566B120-4	LOWER WHEEL 21"
120-5	P0566B120-5	WHEEL PULLEY
120-6	P0566B120-6	BUTTON HD CAP SCR M8-1.25 X 20
120-7	P0566B120-7	UPPER WHEEL SHAFT PLATE
120-8	P0566B120-8	CAP SCREW M6-1 X 8
172	P0566B172	CONNECTING CORD 12G 1W
173	P0566B173	WIRE NUT 14-22 AWG
174	P0566B174	EXT TOOTH WASHER 5MM
175	P0566B175	LOCK WASHER 6MM
176	P0566B176	ADJUSTMENT PLATE
177	P0566B177	CAP SCREW M5-.8 X 12
178	P0566B178	FLAT WASHER 5MM



Table, Fence & Trunnion



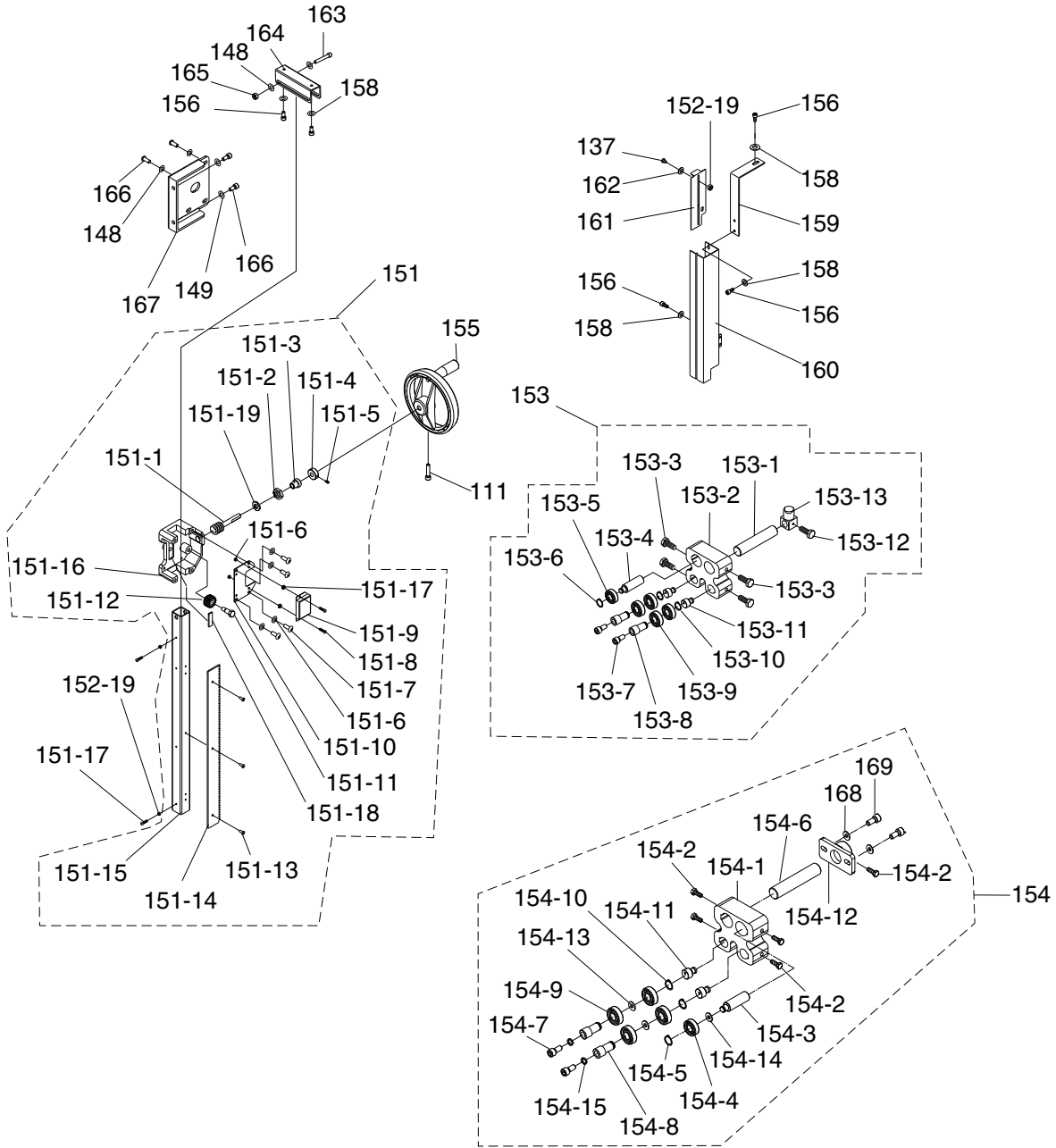
Table, Fence & Trunnion Parts List

REF	PART #	DESCRIPTION
94	P0566B094	KNOB M8-1.25 X 20
111	P0566B111	CAP SCREW M6-1 X 25
121	P0566B121	TABLE 20-3/4" X 29-1/2"
122	P0566B122	TABLE INSERT
123	P0566B123	MITER GAUGE ASSY
123-1	P0566B123-1	GUIDE BAR
123-2	P0566B123-2	T-SLOT WASHER
123-3	P0566B123-3	FLAT HD SCR M6-1 X 8
123-4	P0566B123-4	POINTER
123-5	P0566B123-5	PHLP HD SCR 10-24 X 3/8
123-6	P0566B123-6	SHOULDER SCREW
123-7	P0566B123-7	MITER GAUGE BODY
123-8	P0566B123-8	FLAT WASHER 8MM
123-9	P0566B123-9	HANDLE
123-10	P0566B123-10	LOCKING BLOCK
123-11	P0566B123-11	LOCKING SHAFT
123-12	P0566B123-12	PHLP HD SCR 10-24 X 3/8
123-13	P0566B123-13	HEX NUT M4-.7
123-14	P0566B123-14	PHLP HD SCR M4-.7 X 16
123-15	P0566B123-15	SCALE
130	P0566B130	CAP SCREW M10-1.5 X 35
131	P0566B131	LOCK WASHER 10MM
132	P0566B132	FLAT WASHER 10MM
133	P0566B133	TRUNNION BRACKET ASSEMBLY
133-1	P0566B133-1	PRESS SHAFT
133-2	P0566B133-2	MICRO ADJUSTING RING
133-3	P0566B133-3	CAP SCREW M8-1.25 X 25
133-4	P0566B133-4	LOCK WASHER 8MM
133-5	P0566B133-5	TRUNNION BLOCK
133-6	P0566B133-6	TRUNNION T-SLIDE
134	P0566B134	LOWER BLADE GUARD
135	P0566B135	OUTER RAIL PLATE
136	P0566B136	FLAT WASHER 6MM
137	P0566B137	FLANGE BOLT M6-1 X 10
138	P0566B138	HANDLE SHAFT
139	P0566B139	SHAFT KNOB
140	P0566B140	HEX NUT M12-1.75
141	P0566B141	POINTER
142	P0566B142	INNER RAIL PLATE
143	P0566B143	FENCE ASSEMBLY
143-1	P0566B143-1	FENCE
143-2	P0566B143-2	POINTER
143-3	P0566B143-3	SET SCREW M8-1.25 X 25
143-4	P0566B143-4	SPRING PLATE
143-5	P0566B143-5	FLANGE SCREW M4-.7 X 8
143-6	P0566B143-6	PIVOT BLOCK
143-7	P0566B143-7	HEX NUT M8-1.25
143-8	P0566B143-8	FENCE LOCK HANDLE

REF	PART #	DESCRIPTION
143-9	P0566B143-9	SHAFT
143-10	P0566B143-10	SET SCREW M7-1 X 10, PLASTIC
143-11	P0566B143-11	NYLON PAD
143-12	P0566B143-12	SET SCREW M8-1.25 X 12
143-13	P0566B143-13	HEX NUT M8-1.25
143-14	P0566B143-14	HEX BOLT M8-1.25 X 20
143-15	P0566B143-15	HEX NUT M8-1.25
143-16	P0566B143-16	FLAT WASHER 8MM
143-17	P0566B143-17	LOCK HANDLE M8-1.25 X 45
143-18	P0566B143-18	SLIDE PLATE
144	P0566B144	RESAW FENCE ASSEMBLY
144-1	P0566B144-1	RESAW FENCE 590MM, ALUMINUM
144-2	P0566B144-2	TAP SCREW M3.5 X 12
144-3	P0566B144-3	FENCE END PLATE 148 X 22 X 1
145	P0566B145	LOCK WASHER 6MM
146	P0566B146	CAP SCREW M6-1 X 20
147	P0566B147	GUARD RAIL
148	P0566B148	FLAT WASHER 8MM
149	P0566B149	LOCK WASHER 8MM
150	P0566B150	CAP SCREW M8-1.25 X 20
152	P0566B152	UPPER GUIDE ASSEMBLY
152-1	P0566B152-1	HEX NUT M5-.8
152-2	P0566B152-2	FLANGE SCREW M5-.8 X 10
152-3	P0566B152-3	GUIDE BRACKET COVER
152-4	P0566B152-4	LOCK WASHER 8MM
152-5	P0566B152-5	CAP SCREW M8-1.25 X 16
152-6	P0566B152-6	FLAT HD SCR M4-.7 X 10
152-7	P0566B152-7	UPPER GUIDE BRACKET COVER
152-8	P0566B152-8	ALIGNMENT PLATE
152-9	P0566B152-9	WORM SHAFT
152-10	P0566B152-10	HEX NUT M16-1.5
152-11	P0566B152-11	GUIDE BRACKET
152-12	P0566B152-12	BUSHING
152-13	P0566B152-13	LOCK COLLAR
152-14	P0566B152-14	SET SCREW M5-.8 X 5
152-15	P0566B152-15	PINION GEAR
152-16	P0566B152-16	UPPER GUIDE SUPPORT BLOCK
152-17	P0566B152-17	UPPER GUIDE RACK
152-18	P0566B152-18	CAP SCREW M6-1 X 16
152-19	P0566B152-19	HEX NUT M4-.7
152-20	P0566B152-20	PHLP HD SCR M4-.7 X 10
152-21	P0566B152-21	EXTENSION RACK
152-22	P0566B152-22	STEP BOLT M10-1.5 X 12 X 43
152-23	P0566B152-23	FLAT WASHER 16MM, FIBER
155	P0566B155	HANDWHEEL
170	P0566B170	CAP SCREW M8-1.25 X 30
171	P0566B171	FLAT WASHER 8MM
179	P0566B179	LOCK WASHER 8MM



Guides



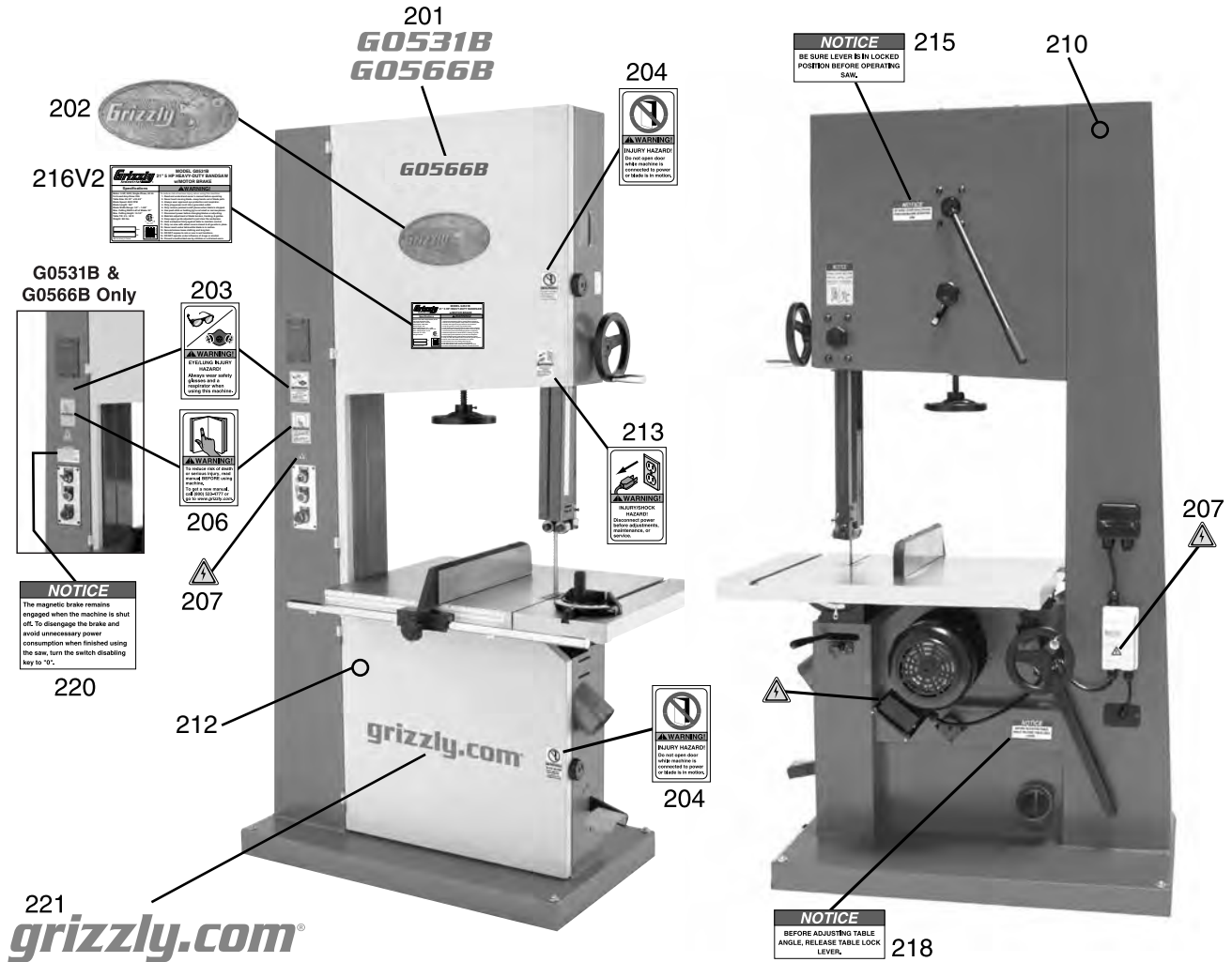
Guides Parts List

REF	PART #	DESCRIPTION
137	P0566B137	FLANGE BOLT M6-1 X 10
148	P0566B148	FLAT WASHER 8MM
149	P0566B149	LOCK WASHER 8MM
151	P0566B151	TABLE TILT ASSEMBLY
151-1	P0566B151-1	WORM CYLINDER
151-2	P0566B151-2	HEX NUT M16-1.5
151-3	P0566B151-3	BUSHING
151-4	P0566B151-4	LOCK COLLAR 22 X 10 X 10MM
151-5	P0566B151-5	SET SCREW M5-.8 X 5
151-6	P0566B151-6	LOCK WASHER 8MM
151-7	P0566B151-7	CAP SCREW M8-1.25 X 16
151-8	P0566B151-8	FLANGE SCREW M5-.8 X 10
151-9	P0566B151-9	OUTER GUIDE BRACKET COVER
151-10	P0566B151-10	LOWER GUIDE BRACKET COVER
151-11	P0566B151-11	PINION GEAR STEP BOLT
151-12	P0566B151-12	PINION GEAR 15T
151-13	P0566B151-13	FLAT HD SCR M4-.7 X 10
151-14	P0566B151-14	LOWER GUIDE RACK
151-15	P0566B151-15	SQUARE TUBE
151-16	P0566B151-16	GUIDE BRACKET
151-17	P0566B151-17	PHLP HD SCR M4-.7 X 10
151-18	P0566B151-18	ALIGNMENT PLATE
151-19	P0566B151-19	FLAT WASHER 16MM, FIBER
153	P0566B153	UPPER BLADE GUIDE ASSEMBLY
153-1	P0566B153-1	ADJUSTMENT ROD
153-2	P0566B153-2	BLADE GUIDE SUPPORT
153-3	P0566B153-3	HEX BOLT M6-1 X 16
153-4	P0566B153-4	SPACING SLEEVE
153-5	P0566B153-5	BALL BEARING 6201ZZ
153-6	P0566B153-6	EXT RETAINING RING 12MM
153-7	P0566B153-7	CAP SCREW M6-1 X 40
153-8	P0566B153-8	PIVOT SLEEVE
153-9	P0566B153-9	BALL BEARING 6202ZZ

REF	PART #	DESCRIPTION
153-10	P0566B153-10	EXT RETAINING RING 15MM
153-11	P0566B153-11	ECCENTRIC SHAFT
153-12	P0566B153-12	HEX BOLT M6-1 X 16
153-13	P0566B153-13	UPPER GUIDE SUPPORT BLOCK
154	P0566B154	LOWER BLADE GUIDE ASSEMBLY
154-1	P0566B154-1	BLADE GUIDE SUPPORT
154-2	P0566B154-2	CAP SCREW M6-1 X 16
154-3	P0566B154-3	SPACING SLEEVE
154-4	P0566B154-4	BALL BEARING 6201ZZ
154-5	P0566B154-5	EXT RETAINING RING 12MM
154-6	P0566B154-6	ADJUSTMENT ROD
154-7	P0566B154-7	HEX BOLT M6-1 X 40
154-8	P0566B154-8	PIVOT SLEEVE
154-9	P0566B154-9	BALL BEARING 6202ZZ
154-10	P0566B154-10	EXT RETAINING RING 15MM
154-11	P0566B154-11	ECCENTRIC SHAFT
154-12	P0566B154-12	SUPPORT BRACKET
154-13	P0566B154-13	SPACER
154-14	P0566B154-14	SPACER
154-15	P0566B154-15	LOCK WASHER 6MM
156	P0566B156	CAP SCREW M6-1 X 10
158	P0566B158	FLAT WASHER 6MM
159	P0566B159	SUPPORT PLATE
160	P0566B160	UPPER BLADE GUARD
161	P0566B161	SLIDING PLATE
162	P0566B162	FLAT WASHER 6MM, FIBER
163	P0566B163	HEX BOLT M8-1.25 X 55
164	P0566B164	SLIDING PLATE
165	P0566B165	LOCK NUT M8-1.25
166	P0566B166	CAP SCREW M8-1.25 X 20
167	P0566B167	SUPPORT BRACKET
168	P0566B168	FLAT WASHER 6MM
169	P0566B169	CAP SCREW M6-1 X 12



Labels & Cosmetics



REF	PART #	DESCRIPTION
201	P0531B201	MODEL NUMBER LABEL (G0531B)
201	P0566B201	MODEL NUMBER LABEL (G0566B)
202	P0566B202	GRIZZLY LOGO PLATE
203	P0566B203	GLASSES/RESPIRATOR LABEL
204	P0566B204	DOOR CLOSED LABEL
206	P0566B206	READ MANUAL LABEL
207	P0566B207	ELECTRICITY LABEL
210	P0566B210	TOUCH-UP PAINT, GRIZZLY GREEN

REF	PART #	DESCRIPTION
212	P0566B212	TOUCH-UP PAINT, GREY PUTTY
213	P0566B213	DISCONNECT POWER LABEL
215	P0566B215	TENSION ADJ LABEL
216V2	P0531B216V2	MACHINE ID LABEL V2.09.18 (G0531B)
216V2	P0566B216V2	MACHINE ID LABEL V2.09.18 (G0566B)
218	P0566B218	TABLE LOCK LABEL
220	P0566B220	MAGNETIC BRAKE NOTICE
221	P0566B221	GRIZZLY.COM LABEL

WARNING

Safety labels warn about machine hazards and ways to prevent injury. The owner of this machine **MUST** maintain the original location and readability of the labels on the machine. If any label is removed or becomes unreadable, **REPLACE** that label before using the machine again. Contact Grizzly at (800) 523-4777 or www.grizzly.com to order new labels.

