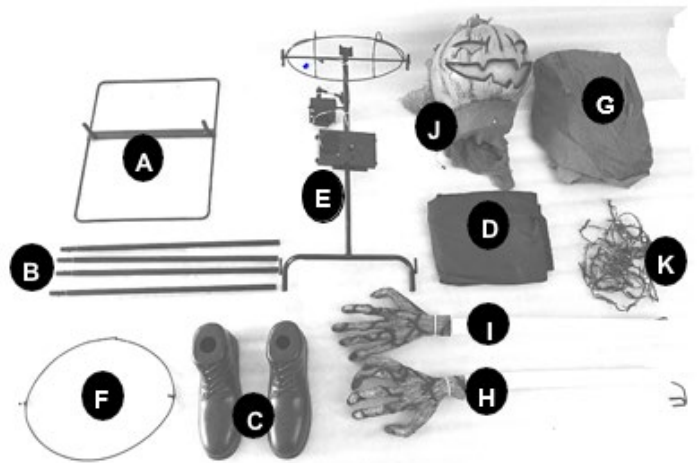


Halloween Figurine Assembly Instructions

The model number of your item is printed on the side of your carton.
Always use this number to identify your item.

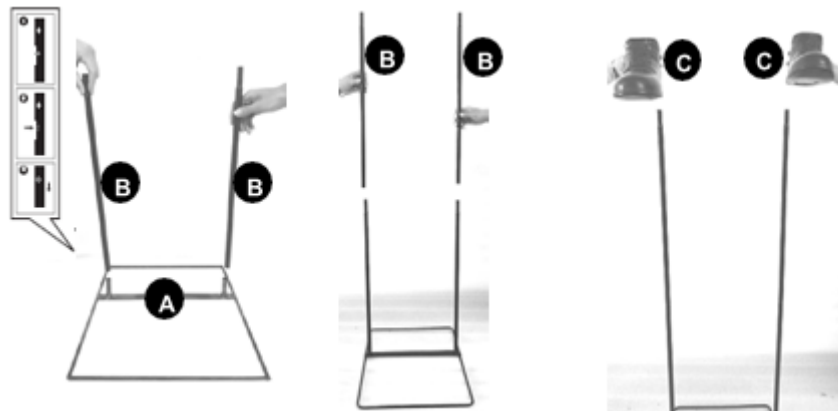
Thank you for your purchase of this quality Halloween decor. With proper use and care, your Halloween decor will provide you with years of enjoyment. Please follow the instructions on how to assemble and disassemble your item. If you should have any problems with your item, or you have any questions, DO NOT return it to the place of purchase. Please call our toll-free number: **1-888-840-4559** and a customer service representative will assist you. Enjoy your Holiday!

Part	Qty
Base (A)	1
Support Poles (B)	4
Shoes (C)	2
Pants (D)	1
Torso Frame (E)	1
Hip (F)	1
Cloak (G)	1
Right Arm (H)	1
Left Arm (I)	1
Head (J)	1
Rope (K)	1



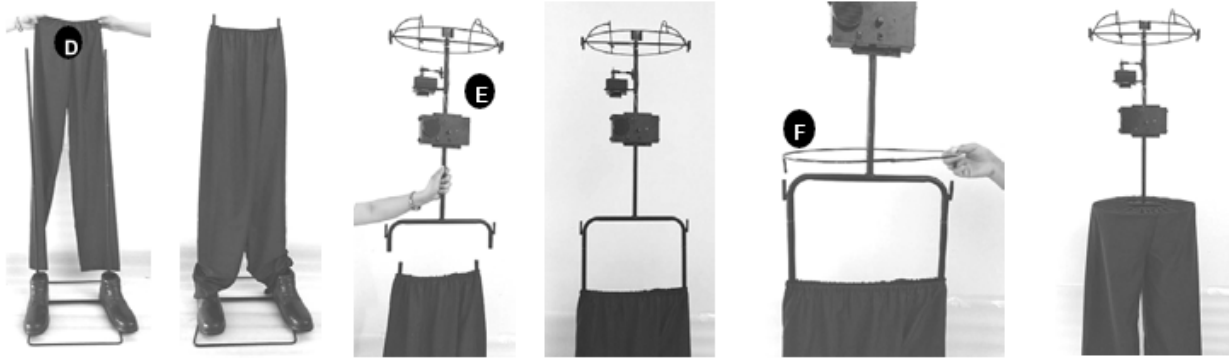
Step 1: Setting Up the Base and Support Poles

Put the longer end of the Base (A) toward the front and attach 4 Support Poles (B) to the Base (A) and secure by aligning the quick-connect push button into the pre-drilled holes. Place Shoes (C) over the Support Poles (B).



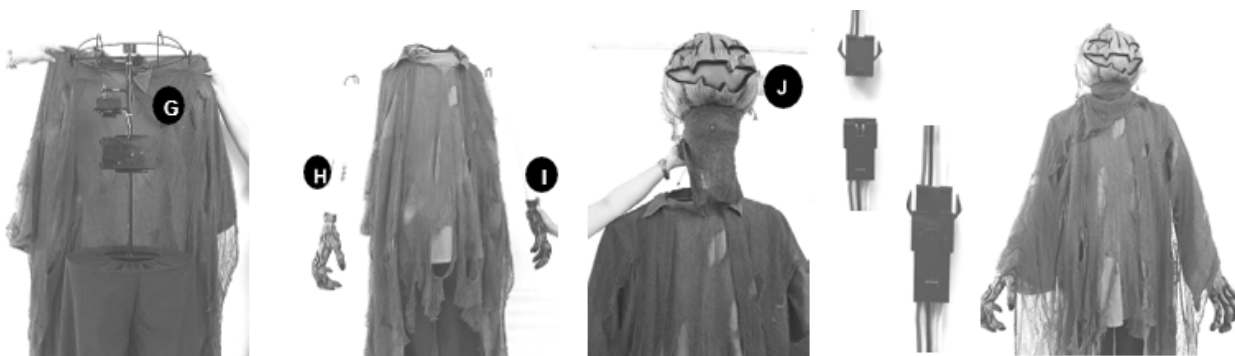
Step 2: Adding the Pants and Torso Frame

Lower the Pants (D) over the Support Poles (B). Attach the Torso Frame (E) and secure by aligning the quick-connect push button into the pre-drilled holes. Lower the Hip (F) over the Torso Frame into the hole on the Torso Frame (E) and then raise up the pants over the Hip (F).



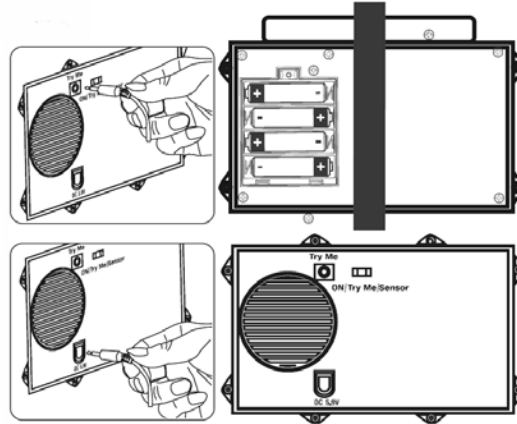
Step 3: Attaching the Cloak, Arms, and Head

Lower the Cloak (G) over the Torso Frame (E). Slide Right Arm (H) through the right sleeve and slide the forked-hook into the hole on the Torso Frame. Repeat for the Left Arm (I). Set the Head (J) onto the Torso Frame into the hole.



Step 4: Attaching the Rope

Set the Rope (K) onto the Cloak. Carefully connect the connector jack wire from function box to the Head. Connect the UL Adapter and the "Try Me" Button to the function box and run the wire down through the costume and out the back. Close the loop and fastener on the collar.

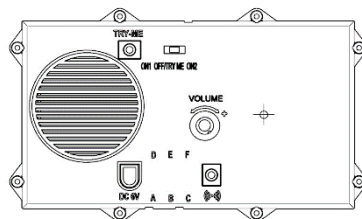


Operating Instructions:

There are 3 settings, which can be adjusted on the main function control box on the torso frame:

1. **ON1:** This will activate the item.
2. **OFF/TRY ME:** This allows the item to be activated only when you push the Try Me button.
3. **ON2:** This will allow the item to be activated by sound (like trick or treaters!). The item will run through one cycle when it is sound activated.

The function control box also has a volume button. Adjust the volume to your liking!





WARNINGS

1. This product is for indoor or covered outdoor use only. Do not place in direct sunlight.
2. This product is for decoration only and is not a toy. Please use caution with children under the age of 8.
3. Do not position the decoration near candles, sources of heat, or in direct sunlight.
4. The decoration cannot be connected to the power supply directly.
5. Decoration should be on a level, stable surface to prevent it from falling over
6. This product is fragile and should be assembled with care.
7. Please follow the steps and requirements specified in the instruction to ensure safety and reliability during the installation.
8. Do not break, cut or alter the power supply cord.
9. Do not attempt to repair the wiring with staples or nails.
10. Do not place the cable under a carpet or rug as it may get damaged.
11. Ensure that the cable is in a secure location where it is not a hazard.
12. Do not connect the decoration to the power supply while it is still in the packaging.
13. Please switch off the transformer when not in use.
14. Do not leave electric decoration unattended while operating in the ON position.
15. Do not over load the transformer.

Storage tips: We suggest saving the carton for storing your figurine. Store in a cool, dry area where the temperature does not exceed 100°F.

