






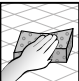









## Application



- 1  Empty completely all the contents of the catalyst (B) onto the paste (A).
- 2   Special finishes: pour the additive onto the paste and mix slowly.
- 3  Mix at slow speed using an electric drill equipped with mixing paddle. Scrape the walls of the bucket to eliminate all parts of non-catalysed product.
- 4  The joints must be dry. Introduce the mortar into the joints using the suitable green rubber float (Art. 946GR) spreading diagonally across the joints. Remove the excess product.
- 5   The grout must be cleaned while the product is still wet. Sprinkle clean water. Initial cleaning using a moistened white felt (art. 109/GBNC) making circular movements. Ensure no water enters the joints.
- 6  Now perform a second cleaning with a rigid cellulose sponge (art. 128G0001).
- 7   Any stains of the transparent product can be removed after 24 hours or anyway after the gap has hardened. Use Haze Remover. Spread Haze Remover with the white felt.
- 8   Leave on for 15-30 minutes. Scrub the surface with the white felt.
- 9  Rinse with clean water. Dry immediately with a clean cloth and do not wait for the evaporation of the rinse water.

### Application data

#### Time before grouting floor application:

- with fast-setting adhesive: 4 hours
- with mortar: 7-10 days

#### Wall application

- with normal-setting adhesive: 24 hours
- with fast-setting adhesive: 4 hours
- with mortar: 2-3 days

#### Mixing ratios:

Component A: 93.7 parts by weight

Component B: 6.3 parts by weight

The two components are pre-measured in their respective packaging

#### Mix consistency:

Thixotropic paste

#### Specific gravity of mix

1.55 kg/l

#### Mixture life:

About 1 hour at T = +23°C / 73,4°F

#### Application temperatures allowed:

From +10°C to +30°C / From +50°F to 86°F

#### Recommended application temperature:

From +18°C to +23°C / From + 64,4°F to 73,4°F

#### Set to light foot traffic:

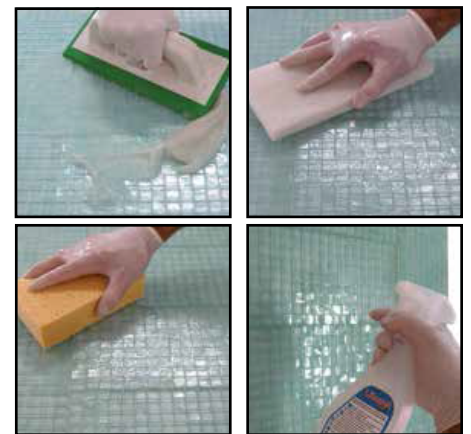
24 hours at T = +23°C / 73,4°F

#### Ready for use:

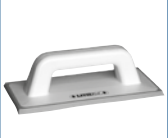
5 days at T = +23°C / 73,4°F

#### Joint width:

From 1 to 15 mm (0,039 - 0,59 in)



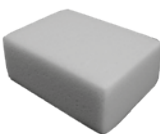
Art. 946GR



Art. 109/ G



Art. 128/ G



HAZE REMOVER

