

BLACK+ DECKER®

INSTRUCTION MANUAL

Powerful lightweight
corded 3-in-1 vacuum



BDSV2

Please read before returning this product for any reason.

3-4	Safety
5	Product Overview
6 - 8	Getting Started
9.....	Using Your BDSV2
10.....	Storing Your BDSV2
11 - 14	Maintenance
15	Troubleshooting
16	Warranty

Please keep this manual for later maintenance of the vacuum
and for contacting us.

Questions? Contact Customer Service

Phone: 855-454-8078

SAFETY DEFINITIONS

To reduce risk of injury, read the instruction manual.

▲ **DANGER:** Indicates an imminently hazardous situation which, if not avoided, **will** result in **death or serious injury**.

▲ **WARNING:** Indicates a potentially hazardous situation which, if not avoided, **could** result in **death or serious injury**.

▲ **CAUTION:** Indicates a potentially hazardous situation which, if not avoided, **may** result in **death or serious injury**.

▲ (Used without word) Indicates a safety related message.

NOTICE: Indicates a practice **not related to personal injury** which, if not avoided, **may** result in **property damage**.

Before using this product, please read the following safety instructions and follow all safety precautions. Any operation inconsistent with this instruction manual may cause damage to this product.

▲ **WARNING:**

POLARIZATION INSTRUCTION

To reduce the risk of electric shock, this appliance has a polarized plug (one blade is wider than the other). This plug will fit in a polarized outlet only one way. If the plug does not fit fully in the outlet, reverse the plug. If it still does not fit, contact a qualified electrician to install the proper outlet. Do not change the plug in any way.

▲ **WARNING:**

To reduce risk of injury, read the instruction manual.

DO NOT vacuum water, wet objects, liquids, ashes, hot coals, cigarette butts, matches or any hot, smoking or burning objects, etc.

DO NOT pick up flammable or combustible materials (i.e. lighter fluid, petrol, kerosene, etc.) or use in the presence of explosive liquids or vapor.

DO NOT pick up toxic material (i.e. chlorine bleach, ammonia, drain cleaner, etc).

DO NOT vacuum Toner (for laser printer, copy machines etc.) as there is a risk of fire and explosion.

DO NOT vacuum plaster, cement etc., as the filter can become blocked.

DO NOT use vacuum without all the filters fitted.

DO NOT store or use the appliance near high temperature areas.

DO NOT run over the power cord with the vacuum cleaner.

DO NOT use vacuum cleaner if it is blocked. Turn off and clear all blockages before continuing.

DO NOT use vacuum cleaner with blocked filters. Clean or replace filters before continuing. (refer to User Maintenance section).

DO NOT use vacuum cleaner if the appliance malfunctions, sounds abnormal, smells, smokes, is dropped or damaged in any manner or any breakage is found during operation.

DO NOT misuse the cord. Never pull the appliance by the cord or pull to disconnect it from the outlet. Instead, grasp the plug and pull to disconnect.

DO NOT use vacuum cleaner to pick up large, hard, or sharp objects such as glass, nails, screws, coins, etc., that are likely to cause damage.

DO NOT use vacuum cleaner if it has been dropped, damaged, left outdoors, or dropped into liquid (water etc.)

DO NOT close door on cord, or pull cord around sharp edges or corners.

DO NOT leave unattended when plugged in and/or switched on

DO NOT handle the plug or vacuum cleaner with wet hands.

DO NOT use with any openings blocked and do not restrict airflow.

DO NOT operate the appliance with a damaged cord or plug. If the supply cord is damaged, it must be replaced by the manufacturer, its service agent or similarly qualified persons in order to avoid a hazard.

DO NOT attempt to modify this product in any way.

FCC Information

1: This device complies with Part 15 of the FCC Rules. Operation is subject to the following two conditions:

- (1) This device may not cause harmful interference, and
- (2) This device must accept any interference received, including interference that may cause undesired operation.

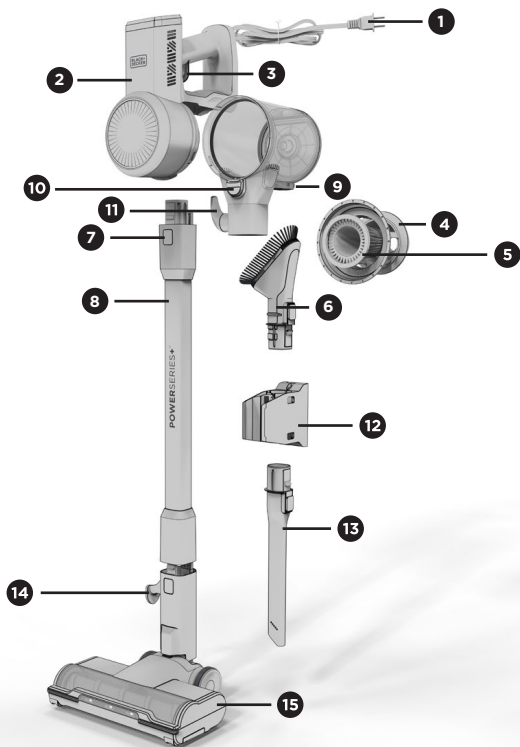
2: Changes or modifications not expressly approved by the party responsible for compliance could void the user's authority to operate the equipment.

NOTE: This equipment has been tested and found to comply with the limits for a Class B digital device, pursuant to Part 15 of the FCC Rules. These limits are designed to provide reasonable protection against harmful interference in a residential installation. This equipment generates uses and can radiate radio frequency energy and, if not installed and used in accordance with the instructions, may cause harmful interference to radio communications. However, there is no guarantee that interference will not occur in a particular installation. If this equipment does cause harmful interference to radio or television reception, which can be determined by turning the equipment off and on, the user is encouraged to try to correct the interference by one or more of the following measures: Reorient or relocate the receiving antenna. Increase the separation between the equipment and receiver.

Connect the equipment into an outlet on a circuit different from that to which the receiver is connected. Consult the dealer or an experienced radio/TV technician for help.

Questions? Contact Customer Service

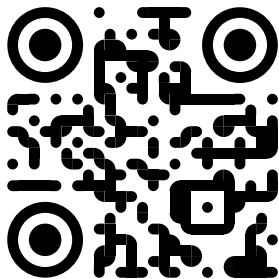
Phone: 855-454-8078



- | | | | |
|--------------------------|-----------------|--|---------------------------|
| 1: Power Cord | 5: HEPA Filter | 9: Dustbin Door Release | 13: Crevice Tool |
| 2: Main Vacuum | 6: Brush Tool | 10: Dustbin Canister Release | 14: Bottom Cord Wrap |
| 3: Power Trigger | 7: Tube Release | 11: Top Cord Wrap | 15: Motorized Floor Brush |
| 4: Screen Filter Housing | 8: Metal Tube | 12: Accessory Mount (for tube storage) | |

SCAN THE QR CODE

Scan QR for Setup and Maintenance Videos and to purchase spare parts.

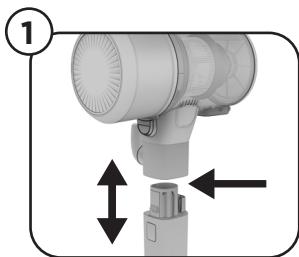


**Scan for BDSV2 Instructions
and Spare Parts**

MAIN VACUUM AND TUBE ASSEMBLY

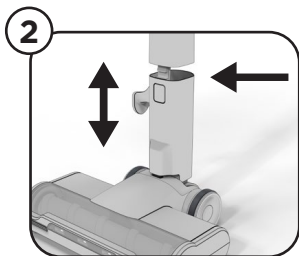
The BDSV2 is designed to be used as a full size stick vacuum or as a hand vacuum (with the crevice or brush tools). Follow the directions below to assemble the vacuum for desired use.

TUBE INSTALLATION



- 1 Insert metal tube into the main vacuum as shown until you hear a **"click"**.

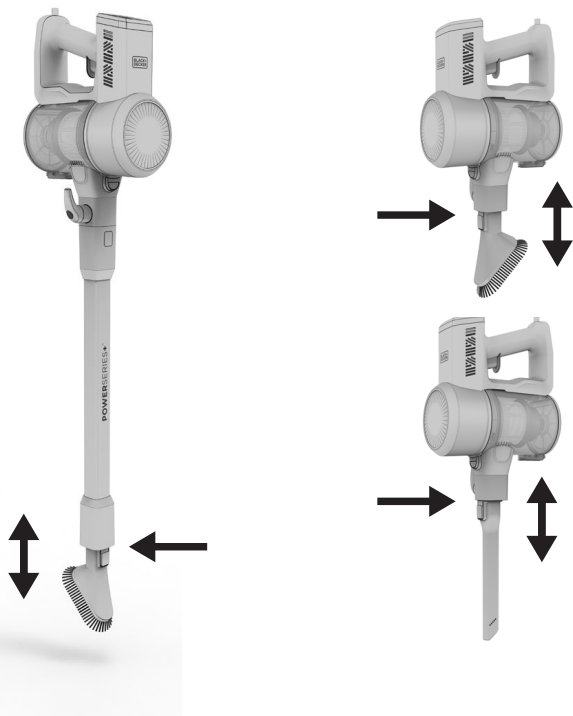
FLOOR BRUSH INSTALLATION



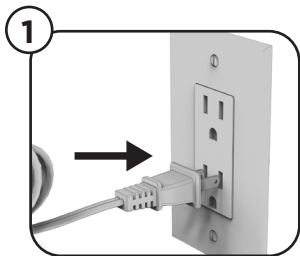
- 2 Insert the motorized floor brush into the metal tube as shown until you hear a **"click"**.

HANDVAC TOOLS

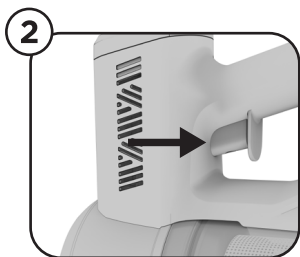
The crevice or brush tool are designed to fit directly into the main vacuum or at the end of the tube for reaching up high.



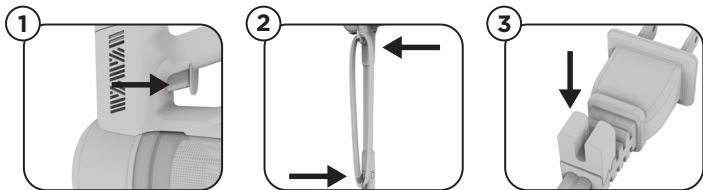
Insert the accessory into the Tube or Main Vacuum as shown until you hear a **"click"**.



- 1** Plug Power Cord into a polarized outlet.



- 2** Press the Power Trigger once to turn the Vacuum ON (trigger does not need to be held).



- 1 Press the Power Trigger once to Turn OFF the Vacuum.
- 2 Loop the power cord around the bottom and top cord wrap brackets.
- 3 Clip the molded plug to the power cord to secure.

INSTALLING THE TOOL HOLDER ONTO A WALL (OPTIONAL)

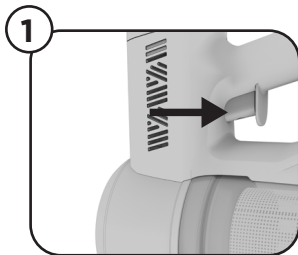
- The tool holder is designed to store the included tool accessories and attach to the wand of the unit.
- Should you desire to mount the tool holder onto the wall, attach the bottom of the holder 12-18" above the floor using the the screws/ anchors provided. The unit should maintain contact with the floor while docked.
- We do not recommend mounting the tool holder if you are unsure of how to properly install into drywall anchors and screws. Consult a professional if you need support.

▲ WARNINGS:

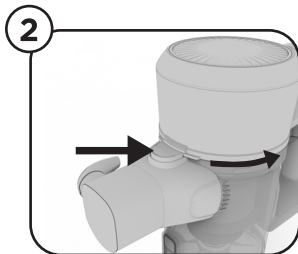
- Ensure the wall surround the mounting area is free of gas, water pipes, electrical cables, wires or other obstructions
- To avoid injury, turn vacuum OFF and unplug cord from wall when not in use.

CLEANING DUSTBIN AND FILTERS

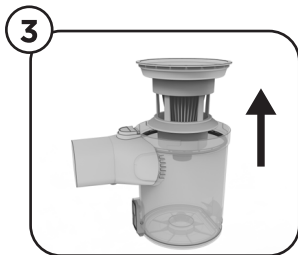
NOTE: Empty your dustbin and clean filters regularly to ensure optimal performance.



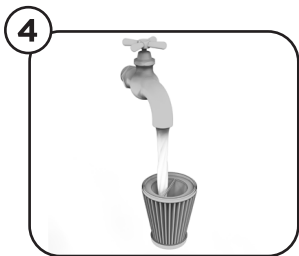
- 1** Turn Vacuum OFF. Then unplug vacuum.



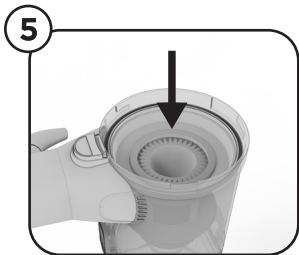
- 2** To remove dirt from the dust cup and filter, hold the vacuum vertically. Press the Dustbin Canister Release, rotate the canister and pull down to release.



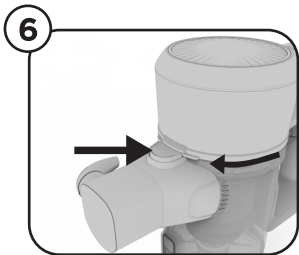
- 3** Remove the HEPA Filter and screen filter housing.



- 4 Empty Dustbin contents into trash. The HEPA filter can be tapped gently to dislodge fine dust and then rinsed under cold water. **Allow to FULLY dry before re-assembling.**



- 5 Replace the filter housing into the top of the dustbin and push down to secure. Drop the dry HEPA filter into the center of the assembly.



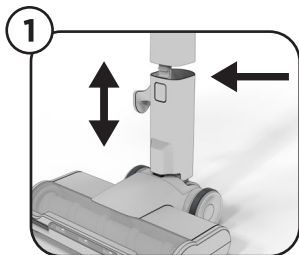
- 6 Attach Dustbin onto vacuum by rotating until you hear a **"click"**.

NOTE: To maintain suction and cleaning performance, you can check the HEPA and pre-motor filters regularly and ensure they are not clogged.

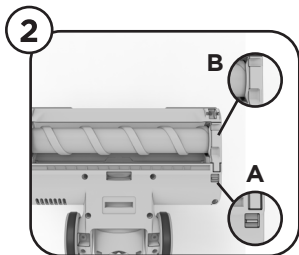
▲ CAUTION: Never operate your vacuum cleaner without the filter in place. Doing so may damage the motor and void the warranty.

CLEANING THE FLOOR BRUSH

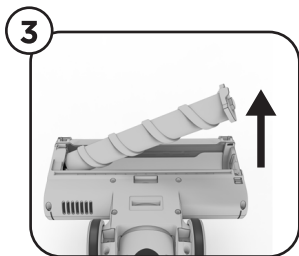
▲ WARNING - Turn vacuum off and unplug from outlet before performing maintenance.



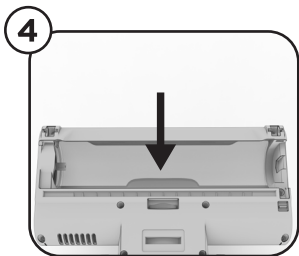
- 1** Remove the floor brush from the tube by pressing the release button and pull apart.



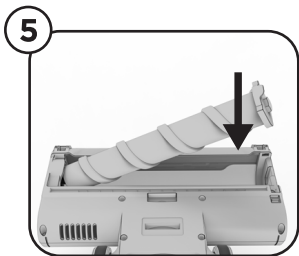
- 2** Turn the floor brush over and locate the brushroll release switch (A). Slide the release switch while simultaneously pulling up on the latch (B).



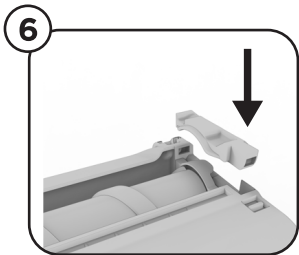
- 3** Lift out the roller brush by pulling up on the tab. Remove debris/hair wrapped around the roller.



- 4 Wipe down the inside of the housing and ensure there is no debris lodged in the neck of the brush or metal tube.



- 5 Reinstall the roller as shown.



- 6 Reinstall the roller latch to secure the roller in place.

VACUUM DOES NOT POWER ON

CAUSE

1. Vacuum cleaner is not plugged in firmly.
2. Blown fuse/tripped breaker.

SOLUTION

1. Check electrical outlet.
2. Check/replace fuse or reset breaker.

WEAK SUCTION

CAUSE

1. Filter is clogged or wet.
2. Dustbin is clogged.

SOLUTION

1. Follow maintenance instructions for emptying and cleaning dustbin and filters.

DUST BLOWS OUT OF AIR VENT

CAUSE

1. Filters not properly secured.

SOLUTION

1. Follow maintenance instructions for replacing filters.

Questions? Contact Customer Service

Phone: 855-454-8078

The One (1) Year Limited Warranty applies to purchases made from authorized retailers of Silver Point Innovations LLC. Warranty coverage applies to the original owner and to the original product only and is not transferable. We recommend registering your product online at www.blackanddecker.com

SilverPoint warrants this product to be free from defects in workmanship and materials, under normal household use and conditions, one (1) year from the date of original purchase and maintained according to the requirements outlined in this User Manual. Should this product fail to function in a satisfactory manner, it is best to contact our customer service team at (855) 454-8078 so that we may help resolve the matter. Should service be required by reason of any defect or malfunction during the warranty period, SilverPoint will repair or, at its discretion, replace the product.

The One (1) Year Limited Warranty is subject to the following conditions and exclusions:

The original unit and/or non-wearable parts deemed defective, in SilverPoint's sole discretion, will be repaired or replaced up to one (1) year from the original purchase date. In the event a replacement unit is issued the replacement product will be warranted for the remainder of the original warranty period or thirty (30) days from the date of shipment of the replacement product, whichever is longer. SilverPoint reserves the right to use new, refurbished or used parts in good working condition to repair or replace any product.

Exclusions:

(1) Normal wear and tear of wearable parts (such as batteries, brushes, HEPA filters, pads, etc.), which require regular maintenance and/or replacement to ensure the proper functioning of your unit, are not covered by this warranty. Replacement parts are available for purchase at www.blackanddecker.com

(2) Any unit that has been tampered with or used for commercial purposes.

(3) Damage caused by misuse, abuse, negligent handling, failure to perform regular maintenance (i.e., not cleaning the filters), or damage due to mishandling in transit.

(4) Consequential and incidental damages.

(5) Defects caused by repair persons not authorized by SilverPoint.

(6) Products purchased, used, or operated outside of North America.

Warranty Support:

You must call (855) 454-8078 to initiate a warranty claim and have the product on hand during the call. You will need the original receipt as proof of purchase.

The One (1) Year Limited Warranty does not cover the cost of shipping this product to our service center or its return to the owner. Please call Customer Service at (855) 454-8078 to evaluate your product and receive warranty term instructions.

Disclaimer: This warranty is valid only in the United States of America and does not extend to owners of the product other than to the original purchaser. In no event will SilverPoint or any of its affiliates, contractors, resellers, their officers, directors, shareholders, members or agents be liable to you or any third party for any consequential or incidental damages, any lost profits, actual, exemplary or punitive damages. (Some states do not allow limitations on implied warranties or exclusion of consequential damages, so these restrictions may not apply to you.) This warranty gives you specific legal rights, and you may also have other rights which vary from state to state. Your acknowledgment and agreement to fully and completely abide by this disclaimer of warranty is contractually binding to you upon your transfer of currency (money order, cashier's check, or credit card) for purchase of your SilverPoint product.

Trademark Acknowledgment

BLACK+DECKER® and the BLACK+DECKER Logo are registered trademarks of the BLACK+DECKER Corporation and are used under license.

© 2021 BLACK+DECKER

U.S. & Canada Only

Manufactured by: Silver Point Innovations LLC

261 5th Avenue, Suite 1512, New York NY 10016