

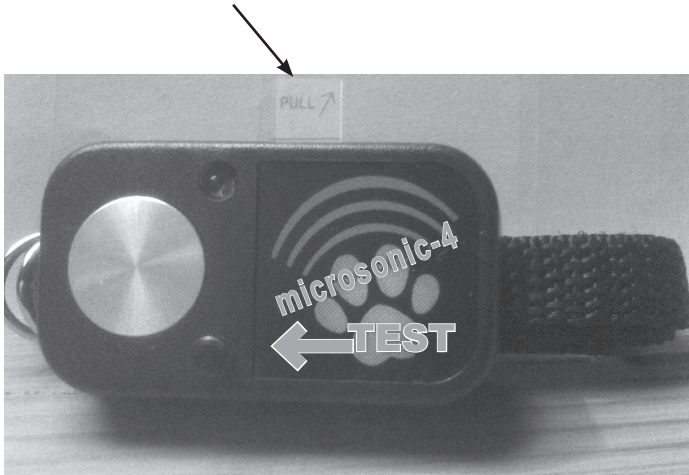


MS4 Electronic Pet Collar

Please Read All Instructions Carefully.

1. Activating Your MS-4 Electronic Pet Collar

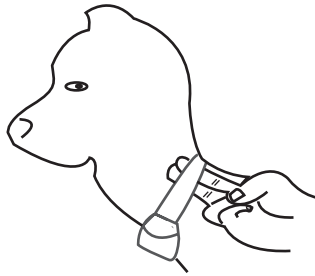
- To activate collar, pull tab out and discard.



- This tab is in place to protect the battery during shipping. Do not replace it.

2. Fitting the MS-4 Electronic Collar on Your Dog

- Place the collar on your pet with the electronics at the throat as shown.
- When properly fitted, the receiver/collar should not move on the dog, but also should not be overly tight. You should be able to fit your fingers between the strap and your pet's neck.

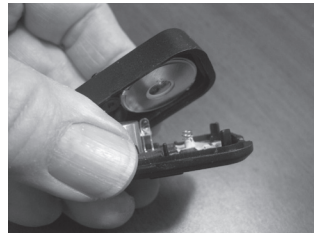


3. Replacing the MS-4 Battery

A. Insert screwdriver or knife in end slot and pry open.



B. Separate top from bottom.



C. Replace battery in top with the metal ring visible.



D. Carefully mate top and bottom while keeping aluminum speaker centered in the top hole. Squeeze together the top and bottom until both ends snap.



NOTE: the B3V1A Battery (pictured at left) is the ONLY battery that is compatible with the MS-4 collar. Do not attempt to use any other battery in the MS-4 collar.

Replacement B3V1A batteries are available at www.HighTechPet.Com in single or multiple packs.

2476 Palma Drive, Suite A
Ventura, CA 93003
info@hightechpet.com

See our complete line of ingenious pet products at www.hightechpet.com



High Tech Pet Products, Inc.
2476 Palma Drive, Suite A
Ventura, CA 93003
www.hightechpet.com