



**akdy**  
APPLIANCES

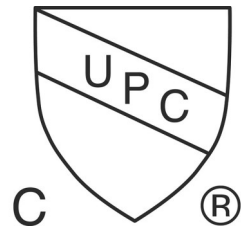
# Installation Manual

## All-In-One Shower Panel System

Copyright akdyusa.com© 2016  
Office: +1 (888) 808-0450  
Email: [help@akdyusa.com](mailto:help@akdyusa.com)

Distributed by akdyusa.com  
Manufactured by AKDY

FOR RESIDENTIAL USE ONLY IN US & CA  
WARRANTY VOID OUTSIDE US & CA  
Revised 08/16



# A. Direct Connect Instructions

**IMPORTANT:** In order to install this shower panel, simple understanding of plumbing techniques will be necessary. Please contact a professional plumber if you are unfamiliar with plumbing techniques or require assistance.

Prerequisites:

- separate cold and hot water supply lines

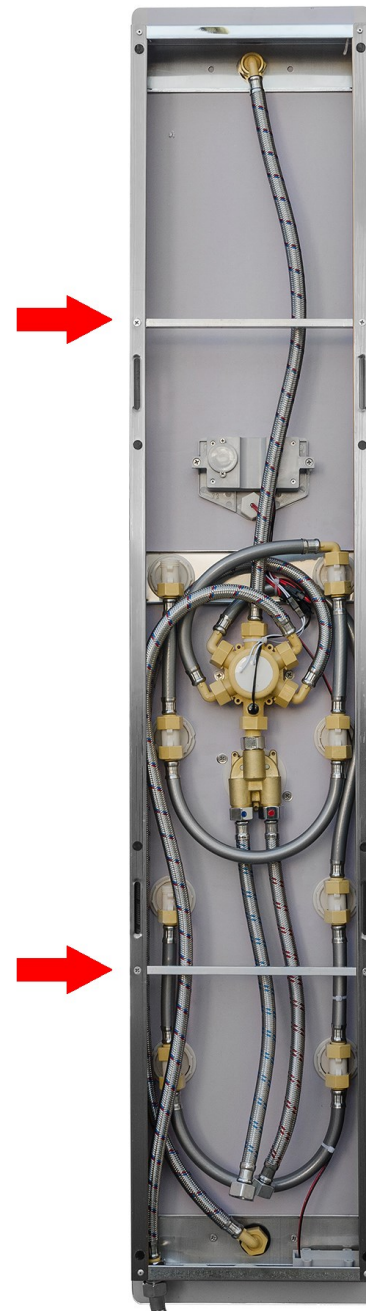
**NOTE:** This shower panel replaces any mixing valve you are currently using.

## Step 1

Thank you for your purchase of an AKDY all-in-one shower panel. Begin by roughly measuring the position of the shower panel relative to your height and mark the location desired.

## Step 2

Remove the shower panel and locate the position of the mounting brackets (red arrows). Take measurements and then transfer those marks to the location of the wall. Mark the center point of the location of the mounting brackets.



# A. Direct Connect Instructions

## Step 3

Using a drill, attach the wall mounting brackets with the included hardware. An extra set of hands may be required for the following steps. Lift and locate the hot and cold water lines on the shower panel (red circle).

## Step 4

Connect the hot and cold water supply lines to the flexible hoses. Be sure to use the included washers. It is recommended a  $\frac{3}{8}$ " right angle connection be installed to better route the flexible hoses (see diagram).

## Step 5

Once connected, lift the entire shower panel and hook it to the wall using the mounting brackets. There are two types of mounting brackets used for our shower panels. Check the next page for detailed mounting instructions.

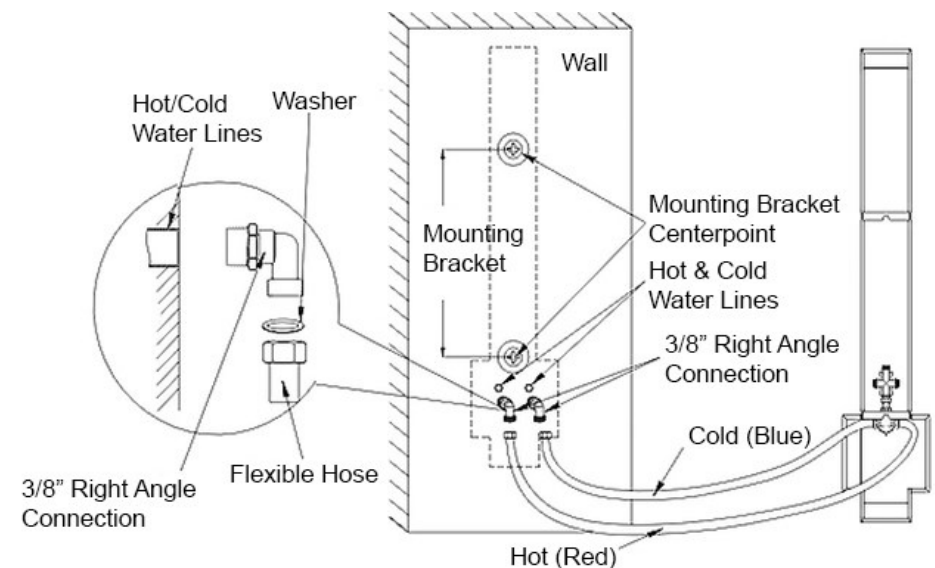
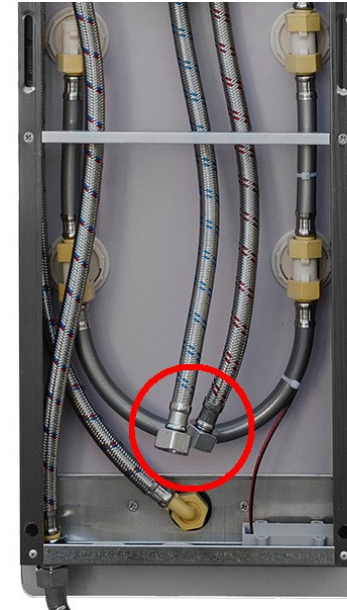
## Step 6

Check if the unit is leveled. Test out all shower functions including the water temperature to finish installation.

**NOTE:** If your water temperature is either too hot or too cold, please check the hot and cold water lines. The connection may be reversed (cold to hot).

## Step 7

Complete the installation by using silicone sealant around the perimeter of the shower panel. Your installation is now complete.



# B. Easy Connect System Instructions

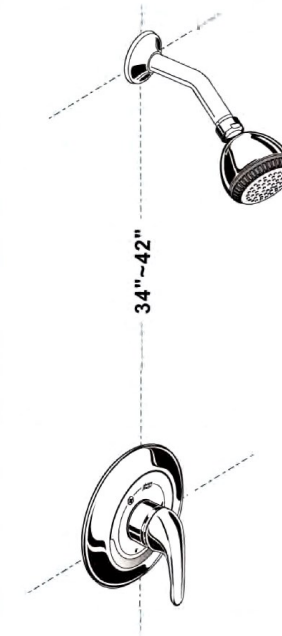
## Step 1

Before beginning installation, ensure the shower panel has sufficient space between the showerhead and pre-existing temperature controls.

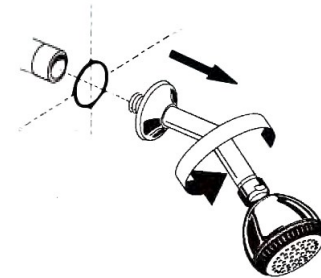
## Step 2

With the water turned off, remove your showerhead and arm from the wall. Note: Standard 1/2" connections are used.

1



2



# B. Easy Connect System Instructions

## Step 3

Connect the included Brass Extender Joint (1/2" size) to the existing showerhead pipe outlet. Multiple sized brass extenders may be included. Choose the one appropriate for your wall thickness. Use Teflon tape for a secure seal.

### Step 3a

Peel off the adhesive backing from the Base Plate Cover.

### Step 3b

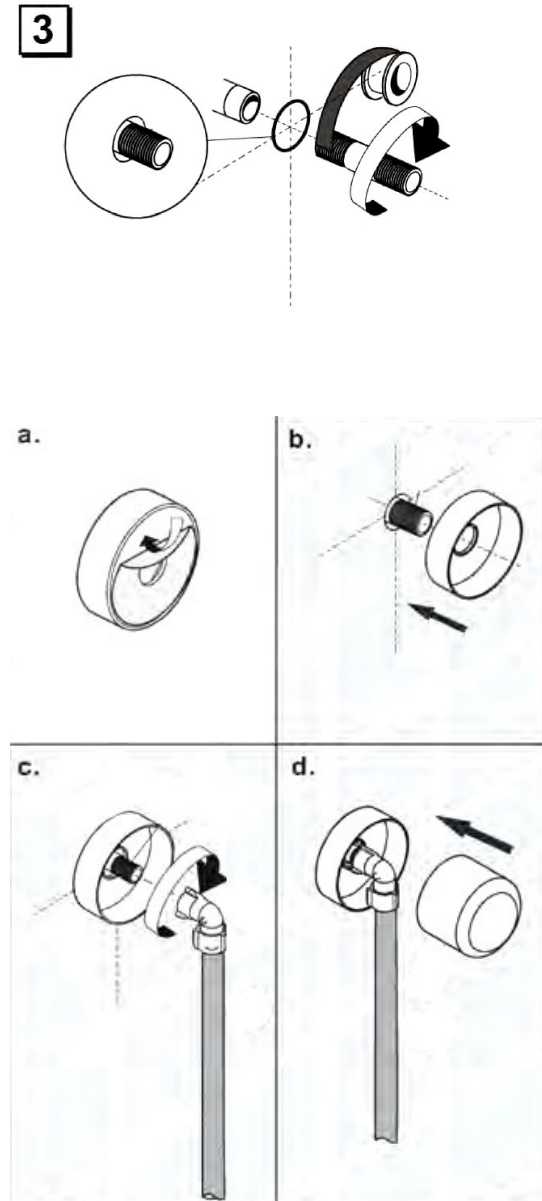
Adhere the Base Plate Cover to the wall. Note: Make sure the wall surface is free of dirt and residue.

### Step 3c

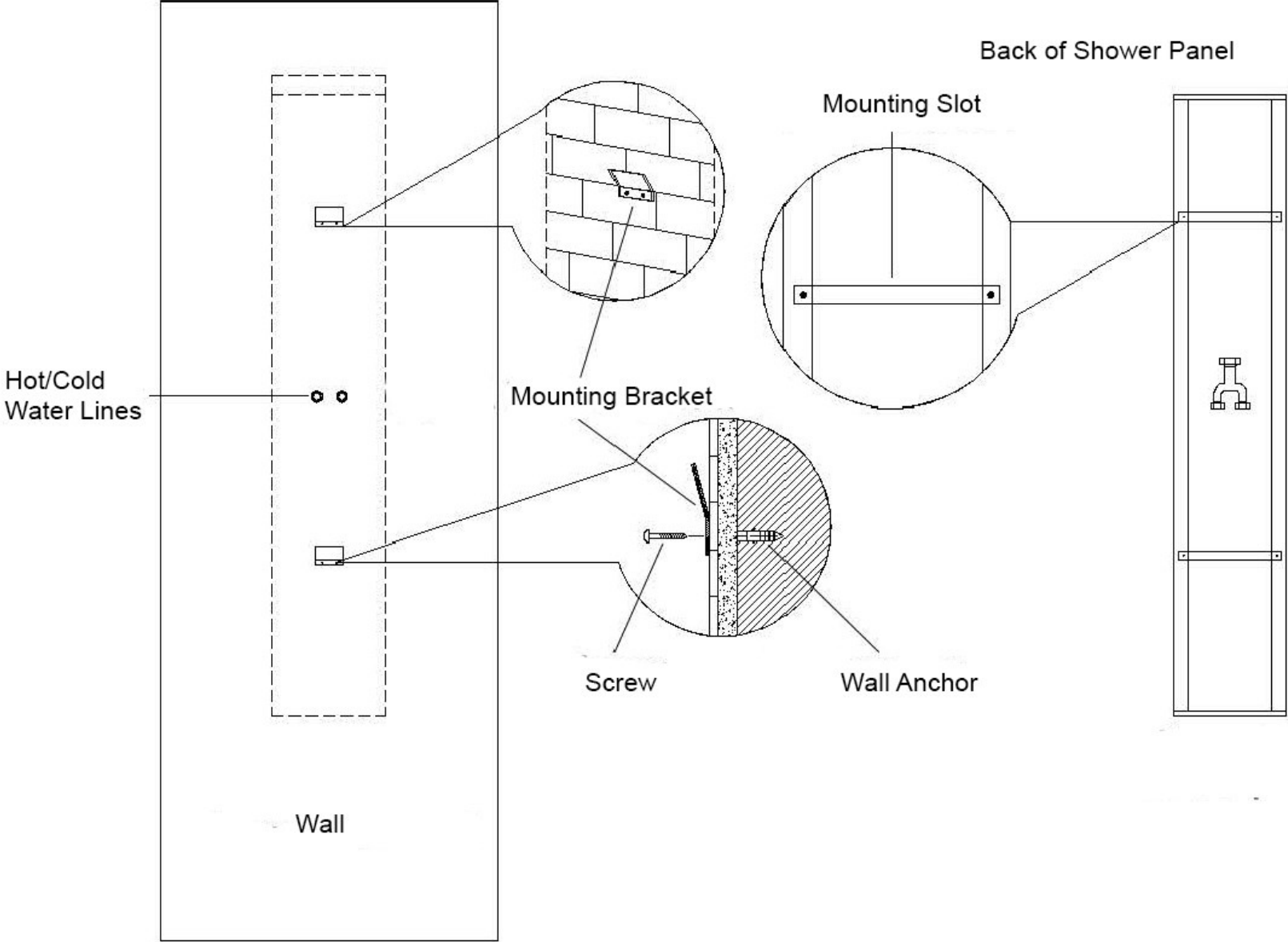
Join the Elbow Connector and Main PVC Pipe assembly to the Brass Extender Joint by turning clockwise. Do not over tighten.

### Step 3d

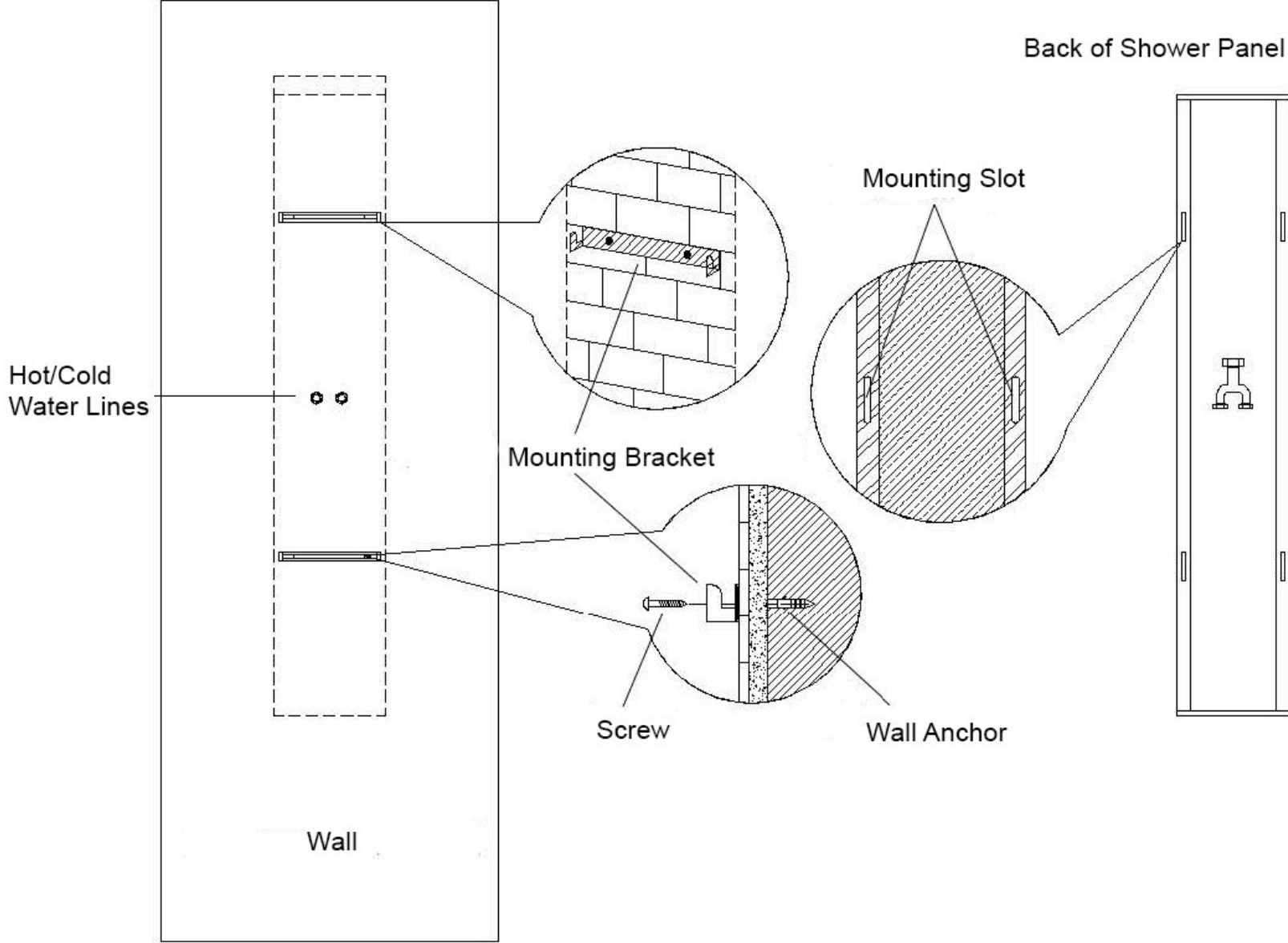
Install the Showerhead Connector Cover.



# Mounting Instructions: Type A



# Mounting Instructions: Type B



# Use and Care Guide

## **Shower Panel Body**

Acrylic or tempered glass shower panels may show water spots. A mild household cleaner will remove them.

Aluminum or stainless steel shower panels can be cleaned with a mild cleaner.

Note: Avoid abrasive cleaners or harsh scrubbing pads (acetone, Ajax, Comet, or other solvents).

## **Showerhead and Body Jets**

Both the showerhead and body jets use non-clogging rubber nozzles that can remove calcium deposits just by rubbing your finger along them. If clog remains, please use CLR or other hard water cleaner.

Note: Avoid abrasive cleaners or harsh scrubbing pads (acetone, Ajax, Comet, or other solvents).

.