

**BEHR**  
**PREMIUM**  
FLOOR COATINGS

## DECORATIVE CONCRETE FINISHES

GRANITE GRIP®  
SEMI-TRANSPARENT  
DECORATIVE CONCRETE STAIN

BEHR PREMIUM® GRANITE GRIP®

For more info, see [www.homedepot.com/behrgranitegrip](http://www.homedepot.com/behrgranitegrip)



Pebble Sunstone  
GG-13



### DECORATIVE, SLIP-RESISTANT CONCRETE COATING

- Revives Concrete Surfaces
- Durable, Protective Finish
- Available in 2 Pre-mixed and 16 Custom Colors
- Fills in Hairline Cracks
- Resists Hot Tire Pick-Up, Dirt, Grease & Household Stains
- Ideal for Driveways, Garage Floors, Porches, Patios, Walkways and Interior Concrete Surfaces



BEFORE



Tan  
No. 655



## GRANITE GRIP® TAN BASE COLOR OPTIONS



Gray  
No. 650



## GRANITE GRIP® GRAY BASE COLOR OPTIONS



Tan  
No. 655



Pebble Sunstone  
GG-13



Copper Marble  
GG-10



Sunset Ridge  
GG-09



Sahara Canyon  
GG-11



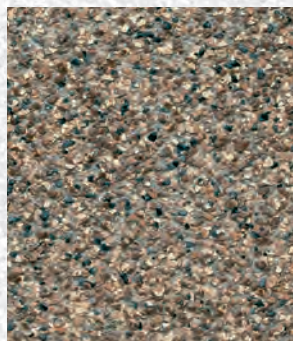
Imperial Jade  
GG-12



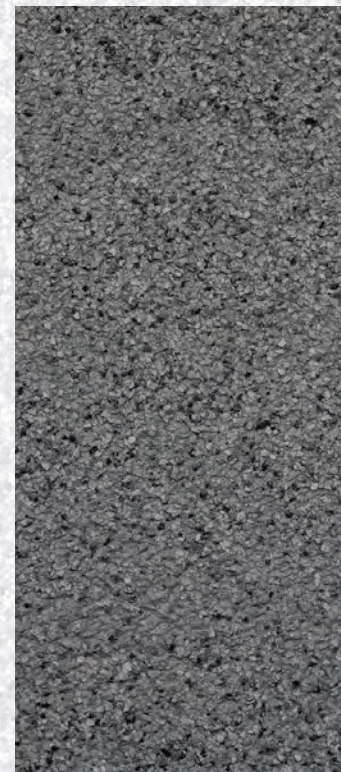
Baltic Stone  
GG-16



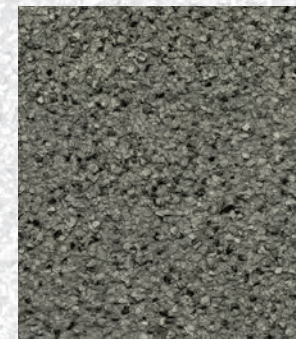
Autumn Mountain  
GG-14



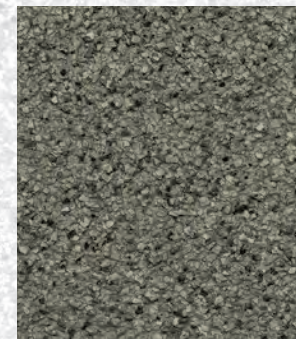
Amethyst  
GG-15



Gray  
No. 650



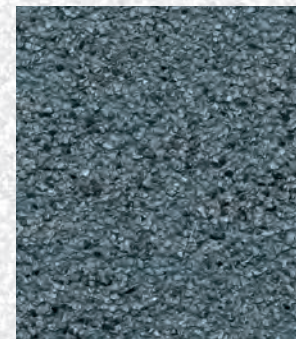
Mission Olive  
GG-18



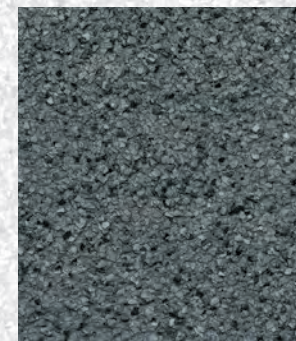
Slate Ivory  
GG-01



Stone Valley  
GG-02



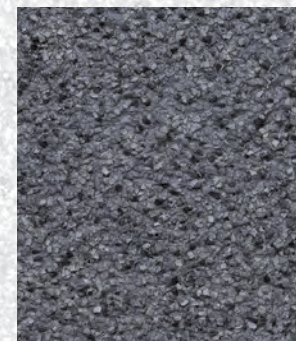
Azul Diamond  
GG-05



Mineral Gray  
GG-17



Atlantic Topaz  
GG-03



Galaxy Quartz  
GG-08



Ornamental Gem  
GG-07

Color samples and textures are simulated. There may be a slight difference between the color of the chip shown and the actual coated surface.

2 coats required for optimum color match, durability and coverage.



# INDIVIDUAL COLORS



Old Adobe DCS-800



Sand DCS-870



Greystone DCS-824



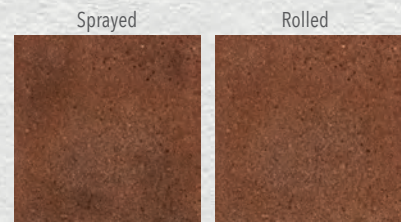
Cajun Rose DCS-803



Desert Gold DCS-812



Industrial Gray DCS-825



Cedar Blush DCS-802



Terra Cotta DCS-865



Arctic Black DCS-828



Cinnamon Stone DCS-833



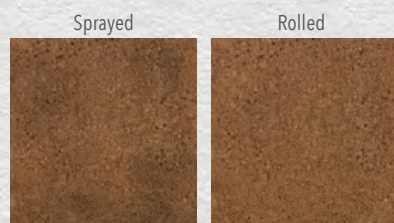
Desert Sunset DCS-808



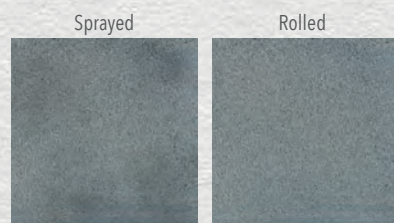
Granite Green DCS-818



Brownstone DCS-834



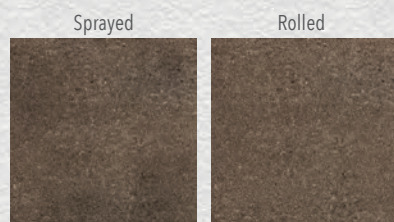
Copper Canyon DCS-801



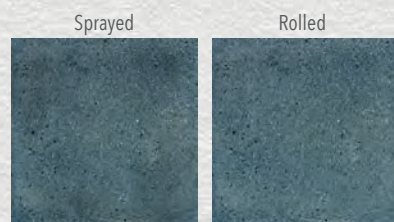
Canal Blue DCS-826



Carob DCS-835



Walnut DCS-867



Late Sky DCS-827

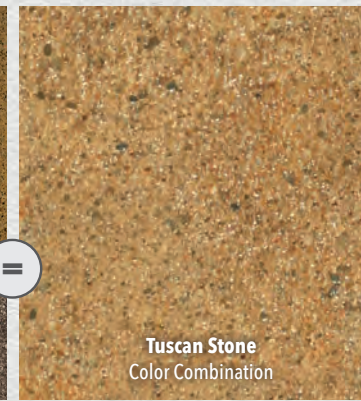


# CHOOSE FROM POPULAR COLOR COMBINATIONS

**Terra Cotta DCS-865**  
Base Color

**Walnut DCS-867**  
Accent Color

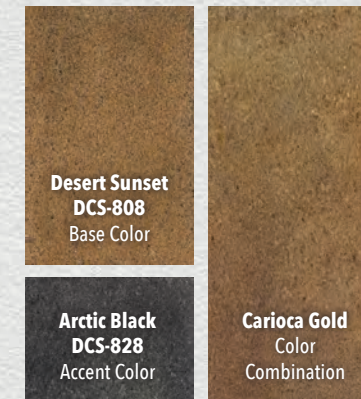
**Tuscan Stone**  
Color Combination



**Desert Sunset DCS-808**  
Base Color

**Arctic Black DCS-828**  
Accent Color

**Carioca Gold**  
Color Combination



**Industrial Gray DCS-825**  
Base Color

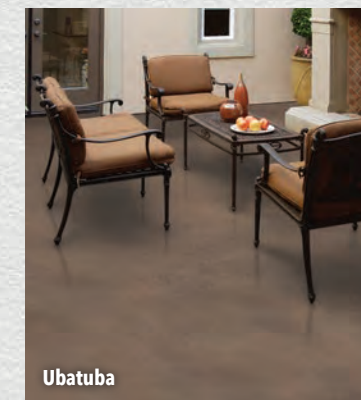
**Arctic Black DCS-828**  
Accent Color

**White Moth**  
Color Combination

**Canal Blue DCS-826**  
Base Color

**Cedar Blush DCS-802**  
Accent Color

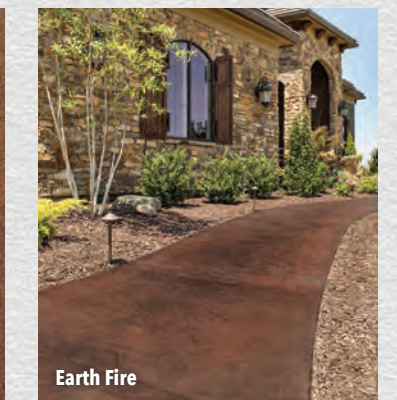
**Ubatuba**  
Color Combination



**Cedar Blush DCS-802**  
Base Color

**Brownstone DCS-834**  
Accent Color

**Earth Fire**  
Color Combination



**Desert Sunset DCS-808**  
Base Color

**Industrial Gray DCS-825**  
Accent Color

**Kashmir Gold**  
Color Combination



**Old Adobe DCS-800**  
Base Color

**Cedar Blush DCS-802**  
Accent Color

**Gialo Antique**  
Color Combination

# BEHR PREMIUM® SEMI-TRANSPARENT DECORATIVE CONCRETE STAIN

For more info, see [www.homedepot.com/behrrsemiconcretestain](http://www.homedepot.com/behrrsemiconcretestain)



## EASY APPLICATION STEPS\*



Gialo Antique



### TRANSFORMS ORDINARY CONCRETE TO A NATURAL STONE-LIKE FINISH

- Tintable to 18 Custom Colors
- Create a Mottled Variegated or Uniform Look
- Make Your Own Unique Color Blend
- Available in Tint Base Gallons
- Ideal for Concrete Porches, Patios & Walkways



BEFORE

### BEHR PREMIUM GRANITE GRIP™

Clean and etch surface until it feels like 150 grit sandpaper.

Step 1



Apply coating to the outer edges of your project area and fill in hairline cracks.

Step 2



Apply 1st Coat: First coat acts as the base and will not completely cover the surface by design.

Step 3



NOTE: MUST USE 1/4" ADHESIVE ROLLER COVER

Apply 2nd Coat (1 gallon covers ≈ 50 sq. ft. with 2 required coats)

Step 4



#### APPLICATORS:

- 1/4" Adhesive Roller Cover
- Nylon/Polyester Brush
- Optional: Texture Sprayer for Large Projects

#### PROJECT ITEMS:

- Plastic Sheetting
- Broom
- Plastic Watering Can
- Stiff Bristle Brush (Non-Metal)
- Painter's Tape
- Hose
- Stir Stick

\*Refer to all product instructions for proper surface preparation and application. Photos may have been digitally enhanced. Actual results may vary.

Cover Photo: (left) Semi-Transparent Decorative Concrete Stain - Earth Fire | (right) Granite Grip - Sahara Canyon GG-11

### BEHR PREMIUM® SEMI-TRANSPARENT DECORATIVE CONCRETE FINISH

Clean and etch surface until it feels like 150 grit sandpaper.

Step 1



Apply 1st color with a pump sprayer. (250 sq. ft. per gallon)

Step 2



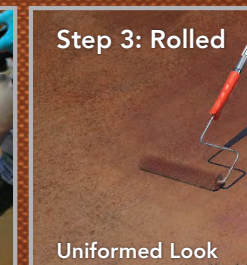
If desired, apply an accent color with a sprayer for a variegated look. For a uniform look, apply a 2nd coat of the base color using a roller.

Step 3: Sprayed



Variegated Look

Step 3: Rolled



Uniformed Look

Optional: Apply Wet-Look Sealer (200-450 sq. ft per gallon)

Step 4



#### APPLICATORS:

- High Quality Pump Sprayer with a Conical Tip
- 3/8" Roller Cover

**BEHR**  
A Masco Company



©2020 Behr Process Corporation, Santa Ana, CA 92705 U.S.A.



Have a coating or product question?  
Visit [behr.com](http://behr.com) or call 1-800-854-0133 Ext. 2 (U.S.).



REV. 09/20

50004049 C-DECORATIVE-CONCRETE-FINISHES