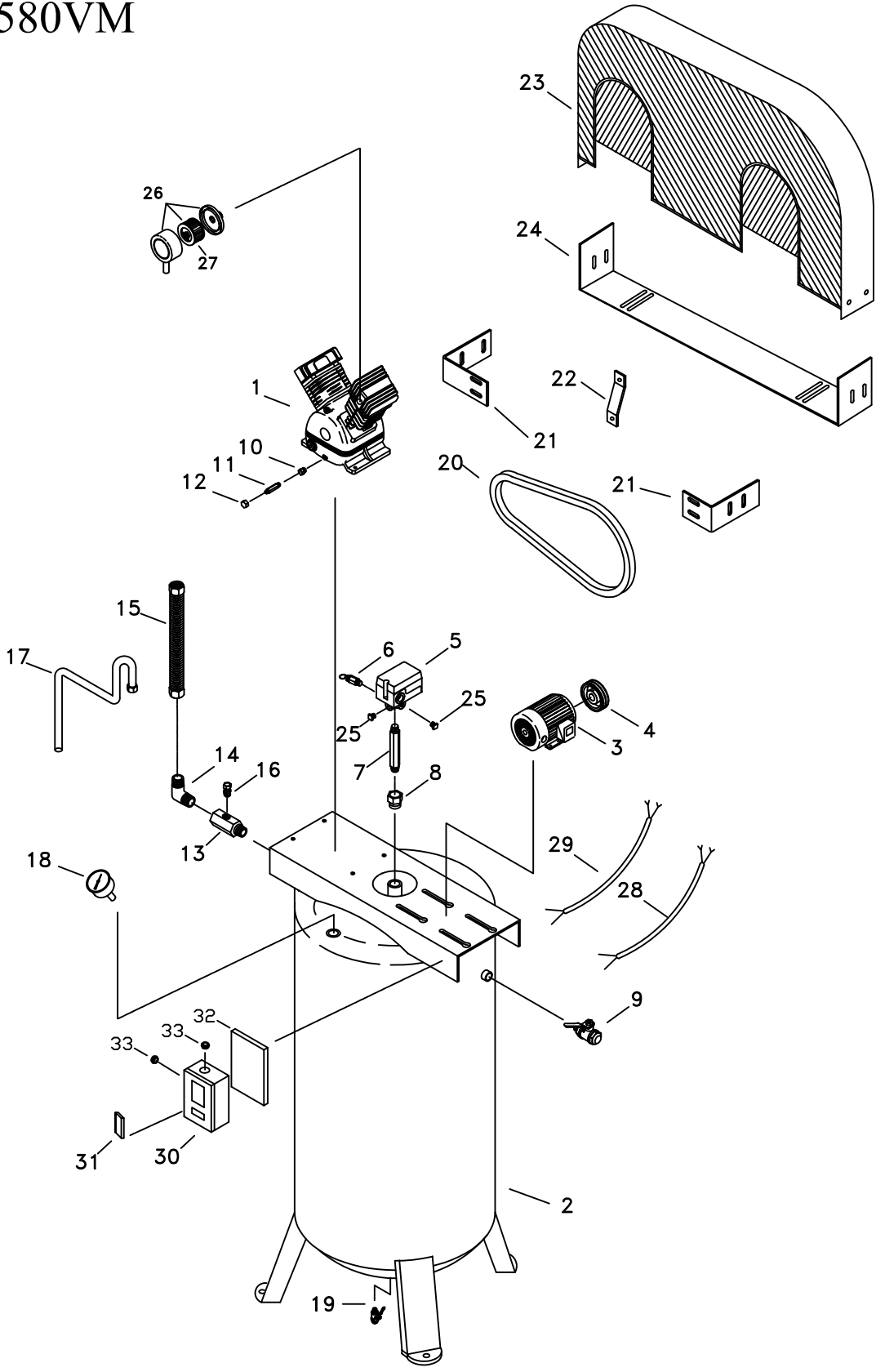


TN-6580VM



PUMA INDUSTRIES, INC.
MEMPHIS, TN.
U.S.A.

VER.: TC-001

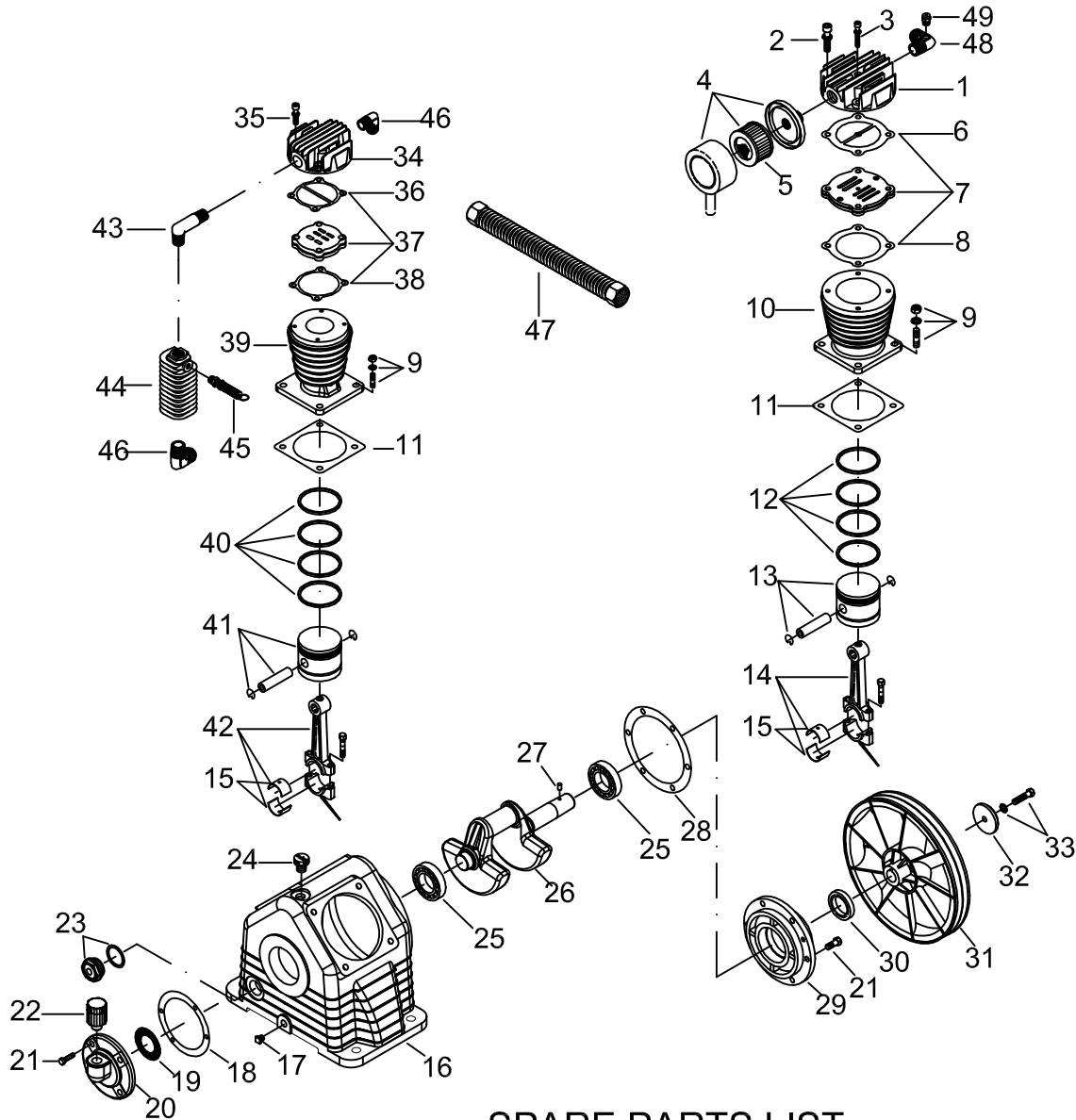
PARTS LIST

Model: TN-6580VM

VER.: TC-001

| REF. NO. | PARTS ID. | PARTS DESCRIPTION | QUANTITY |
|----------|-----------------|--|----------|
| 1 | CT51 | PUMP | 1.00 |
| 2 | 4001-80V | TANK | 1.00 |
| 3 | 4027-65-21 | MOTOR | 1.00 |
| 4 | 2A43X07 | PULLEY | 1.00 |
| 5 | 056-LF175P4-001 | PRESSURE SWITCH (175PSI, 4 PORTS) | 1.00 |
| 6 | 84006010 | PRESSURE RELIEF VALVE | 1.00 |
| 7 | 035-02NX30-R00 | NIPPLE | 1.00 |
| 8 | 050-06MN02FN | REDUCE BUSHING (3/4"M X 1/4"F) | 1.00 |
| 9 | 2413007 | SERVICE VALVE | 1.00 |
| 10 | 2N02-02T02NC | BUSHING ADAPTOR | 1.00 |
| 11 | 035-02NX24-R00 | OIL DRAIN TUBE | 1.00 |
| 12 | 046-02NBC-H00 | OIL CAP | 1.00 |
| 13 | CV3434M | CHECK VALVE | 1.00 |
| 14 | 2N06-06T06H | ELBOW | 1.00 |
| 15 | 3B2-06610 | DISCHARGE TUBE | 1.00 |
| 16 | 035-02RN01MN-00 | NIPPLE (STRAIGHT TUBE FITTING) | 1.00 |
| 17 | 063-CU01X670 | TUBE (CHECK VALVE - PRESSURE SWITCH) | 1.00 |
| 18 | 2D12-20D20K | PRESSURE GAUGE | 1.00 |
| 19 | 2413020 | DRAIN VALVE | 1.00 |
| 20 | 2N31-A66 | BELT (A 66) | 2.00 |
| 21 | 3427028 | BRACKET - LEFT & RIGHT | 2.00 |
| 22 | 3427015 | BRACKET - CENTER | 1.00 |
| 23 | 3426024 | BELT GUARD | 1.00 |
| 24 | 3427202 | BELT GUARD BOTTOM COVER | 1.00 |
| 25 | 2B14-ST02E | PLUG | 2.00 |
| 26 | 2140009A | AIR FILTER ASSEMBLY | 1.00 |
| 27 | 1801 (2142002) | FILTER ELEMENT | 1.00 |
| 28 | 2E02-3530702Y2F | ELECTRIC CABLE (P.S. to Mag. Starter) | 1.00 |
| 29 | 2E02-3530702Y2F | ELECTRIC CABLE (Mag. Starter to Motor) | 1.00 |
| 30 | MS-50-1 | MAGNETIC STARTER | 1.00 |
| 31 | B-40 | HEATER ELEMENT (FUSE) | 1.00 |
| 32 | 3417010 | STARTER MOUNTING BRACKET | 1.00 |
| 33 | 025A-03N-000 | WIRE CLAMP | 2.00 |
| | | | |

MODEL : CT51



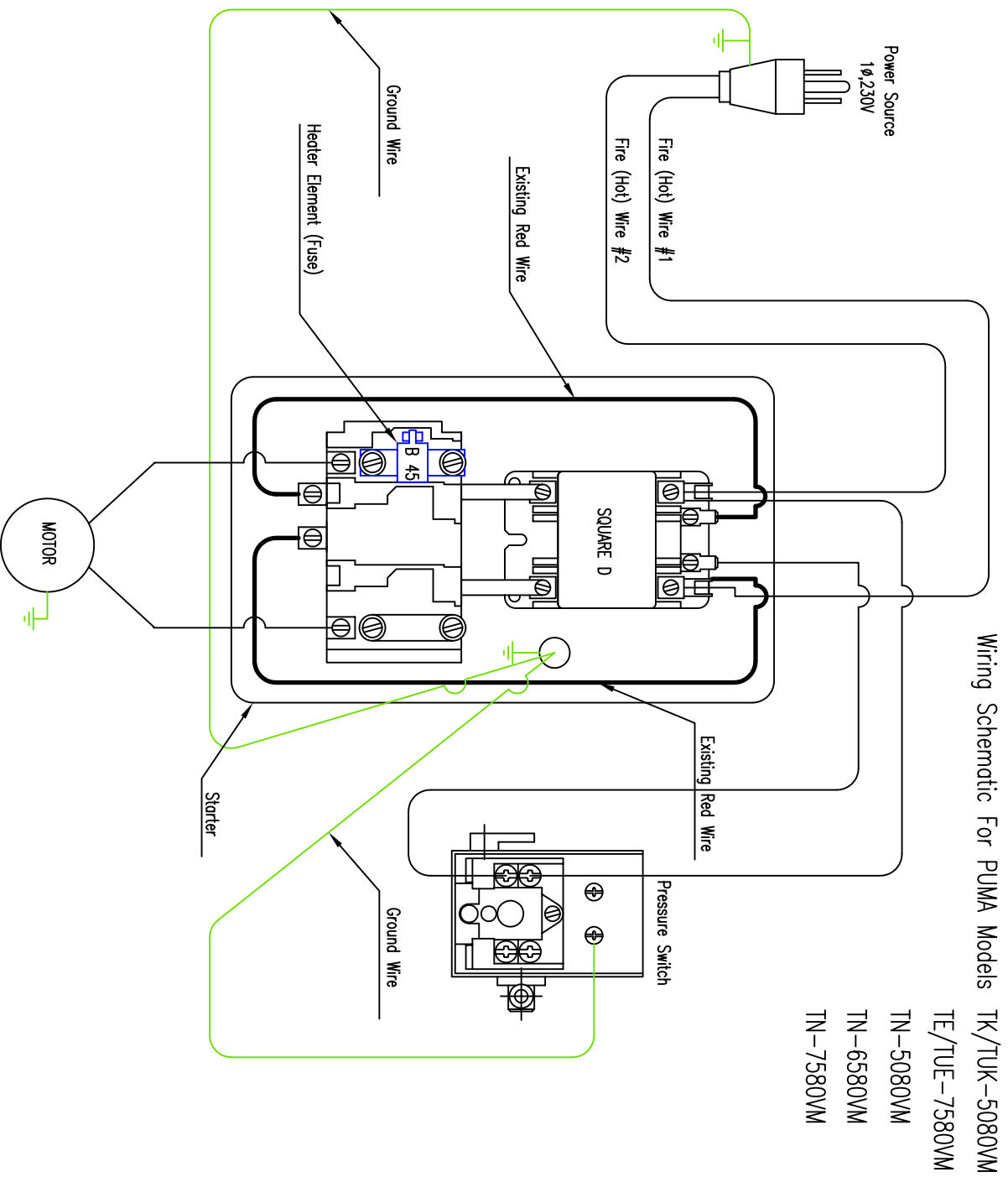
SPARE PARTS LIST

NO: MP-0410

| REF. NO. | DESCRIPTION | PART NO. | QTY | REF. NO. | DESCRIPTION | PART NO. | QTY. |
|----------|------------------------------|----------------|-----|----------|------------------------------|-----------------|------|
| 1 | Cylinder head | 3101070 | 1 | 26 | Crankshaft & Counterweight | 3304093 | 1 |
| 2 | Hex Socket Bolt (Allen bolt) | 2B01-M10*050V | 4 | 27 | Pulley key | 2N47-63*09 | 1 |
| 3 | Hex Socket Bolt (Allen bolt) | 2B01-M06*050V | 4 | 28 | Rear bearing end gasket | 2G06-022 | 1 |
| 4 | Air filter Assembly | 2140009A | 1 | 29 | Rear bearing end | 3311032 | 1 |
| 5 | Filter element | 1801 (2142002) | 1 | 30 | Oil seal | 2N50-TC30*50*11 | 1 |
| 6 | Cylinder head gasket | 2G01-029 | 1 | 31 | Pulley | 3PBF-160A230 | 1 |
| 7 | In. & Ex. valve assembly | 3B13-K9595 | 1 | 32 | Flat washer | 2B34-13*52*14 | 1 |
| 8 | Valve plate gasket | 2G03-020 | 1 | 33 | Hex bolt | 2B00-SM12*050V | 1 |
| 9 | Stud Screw | 2B11-003-A | 8 | 34 | Cylinder head | 3101069 | 1 |
| 10 | Cylinder | 3201076 | 1 | 35 | Hex Socket Bolt (Allen bolt) | 2B01-M06*040V | 4 |
| 11 | Cylinder gasket | 2G04-023 | 2 | 36 | Cylinder head gasket | 2G01-015 | 1 |
| 12 | Piston ring kit | 3B32-CK7595 | 1 | 37 | In. & Ex. valve assembly | 3B13-K5151 | 1 |
| 13 | Piston kit | 3B31-CK7595 | 1 | 38 | Valve plate gasket | 2G03-011 | 1 |
| 14 | Rod kit | 3B33-CK7548 | 1 | 39 | Cylinder | 3201077 | 1 |
| 15 | Bearing (Rod bushing) | 2316010-B | 2 | 40 | Piston ring kit | 3B32-CT5051 | 1 |
| 16 | Crankcase | 3301112 | 1 | 41 | Piston kit | 3B31-CT5051 | 1 |
| 17 | Plug - Oil draining | 2N33-002 | 1 | 42 | Rod kit | 3B33-CT5048 | 1 |
| 18 | Front bearing end gasket | 2G05-017 | 1 | 43 | Elbow | 2N06-06T06T85 | 1 |
| 19 | Oil mesh | 2352001 | 1 | 44 | Intercooler | 3125001 | 1 |
| 20 | Front bearing end | 3309033 | 1 | 45 | Pressure relief valve | 2406021T | 1 |
| 21 | Hex bolt | 2B00-SM08*025 | 10 | 46 | Elbow | 2N06-06T06H | 2 |
| 22 | Breather | 2321008 | 1 | 47 | Discharge tube | 3B2-06*610 | 1 |
| 23 | Oil sight gauge kit | 2303014A | 1 | 48 | Elbow | 2N06-06T06H02T | 1 |
| 24 | Oil filling Cap kit | 2319003A | 1 | 49 | Auto relief valve (10 PSI) | 2409003 | 1 |
| 25 | Bearing | 2N35-6206 | 2 | | | | |

Warning: This diagram is for your reference only. Please check with a qualified electrician or serviceman for wiring to meet your local electrical wiring code.
Puma assumes no responsibility for changes to factory wiring.

Caution: NEVER connect hot wires from power source to pressure switch. Only connect them to Starter as shown in this diagram.



Warning: This diagram is for your reference only. Please check with a qualified electrician for wiring to meet your local electrical wiring code.

Manufacturer assumes no responsibility for changes to factory wiring.

Electrical Circuit Diagram:

