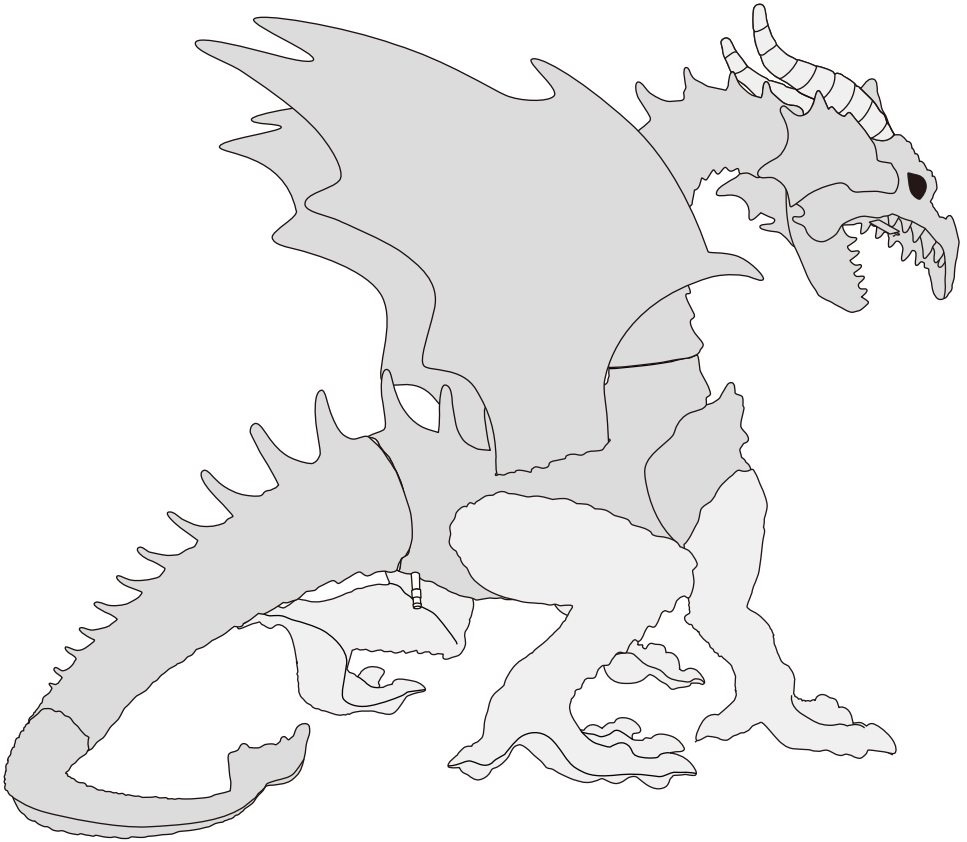




TM

INSTRUCTION MANUAL



SET-UP INSTRUCTIONS FOR THE 7 FT LED GIANT DRAGON



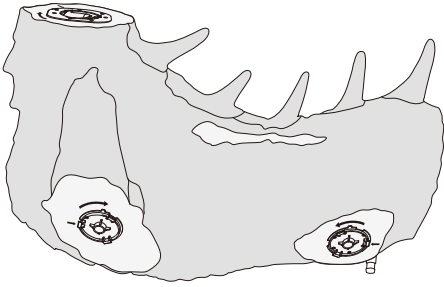
1-877-527-0313, 8 a.m. to 5 p.m., EST,
Monday-Friday



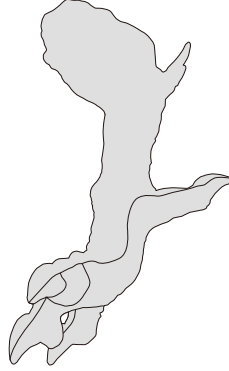
info@pan-asian.com.hk

PART LIST:

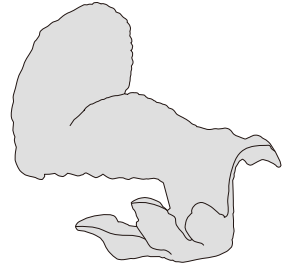
A Torso



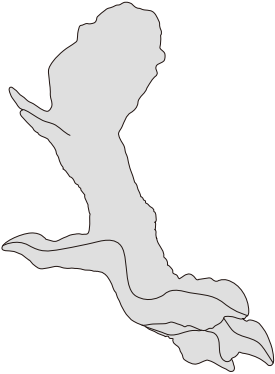
B Left front leg



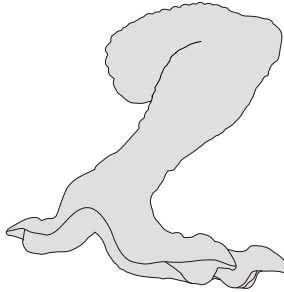
C Left hind leg



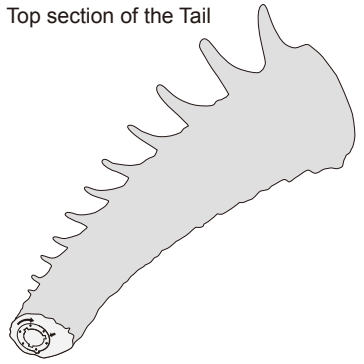
D Right front leg



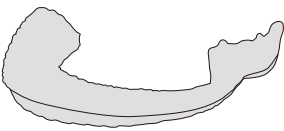
E Right hind leg



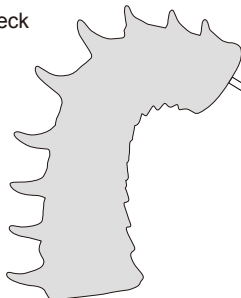
F Top section of the Tail



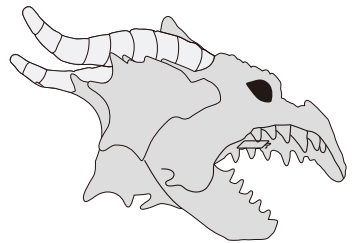
G Bottom section of the Tail



H Neck



I Head (includes 3 AA batteries)



L Fog Machine Adapter



M Fog Hose



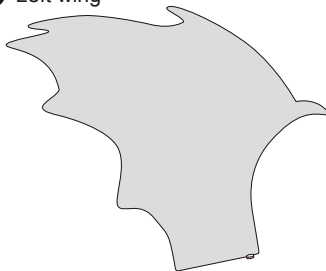
N AC/DC Adapter



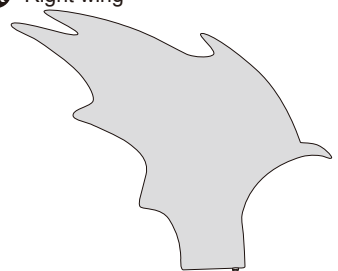
O Large Try Me Button



J Left wing



K Right wing



READ CAREFULLY & RETAIN FOR FUTURE REFERENCE!



Questions, problems, missing parts? Before returning to your retailer, call our customer service department at 1-877-527-0313, 8 a.m. to 5 p.m., EST, Monday-Friday or email at info@pan-asian.com.hk.



WARNING: This is not a toy and is for decorative purposes only. For indoor and outdoor use. This item is not intended for use by children under the age of 14. Do not place product near an open fire or heat source such as a radiator, stove, etc.

PREPARATION: Before beginning assembly the product, make sure that all parts are present. Compare parts with package contents list and diagram above. If any part is missing or damaged, do not attempt to assemble, install or operate the product. Contact customer service for replacement parts.

BATTERY USAGE:

ADULT SUPERVISION IS RECOMMENDED WHEN CHANGING BATTERIES.

1. Do not mix old and new batteries.
2. Do not mix alkaline, standard (carbon-zinc) or rechargeable (nickel-cadmium) batteries.
3. Alkaline batteries are suggested for longer life.
4. Exhausted batteries are to be removed from the product.
5. Dispose of exhausted batteries with care.
6. Do not dispose of batteries in fire, as they explode or leak.

CAUTION: Please remove batteries if the power is consumed or if the product is to be left unused for a long period of time.

RECYCLE YOUR BATTERIES: To help protect our environment, we recommend that all batteries be recycled. You can find a local recycling center by going to: <http://earth911.com/hazardous/single-use-batteries/> Or, in the United States call 1-800-CLEANUP for a recycling location near you.

IMPORTANT: This product can be powered by a UL Listed, 4.5 V 2 A adapter (included) in place of using batteries. Adapter should be plugged into 100 V-240 V household outlet. Remove batteries when using an AC/DC adapter.

SAFETY INSTRUCTIONS:

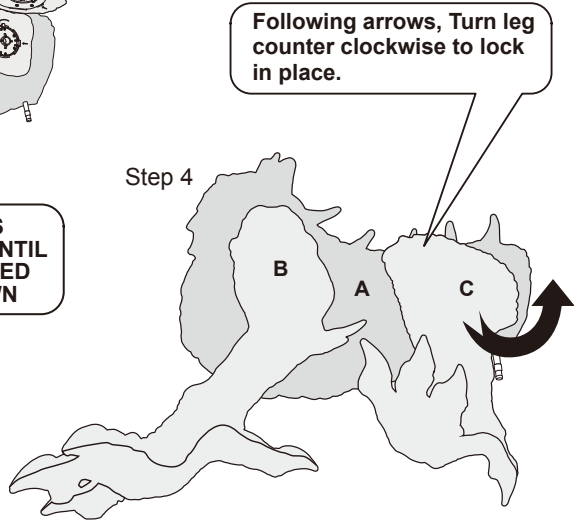
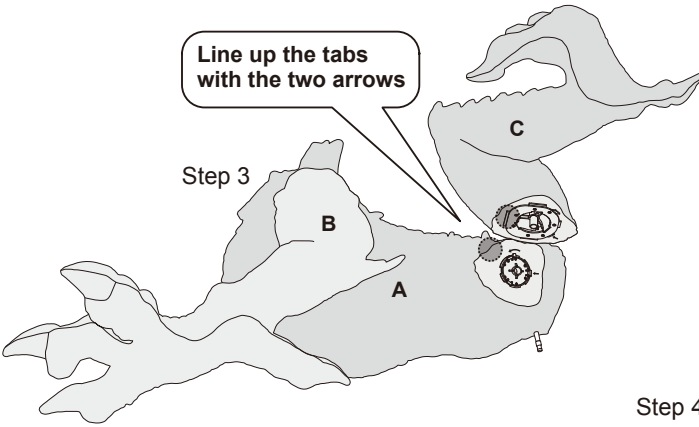
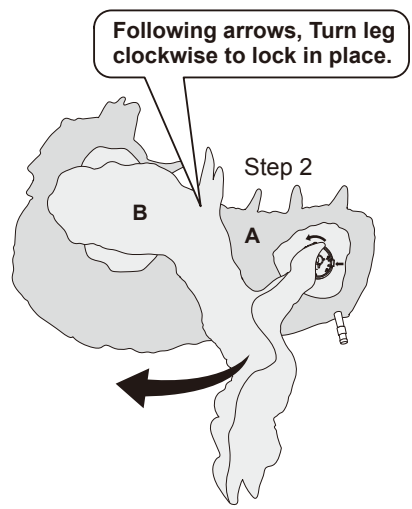
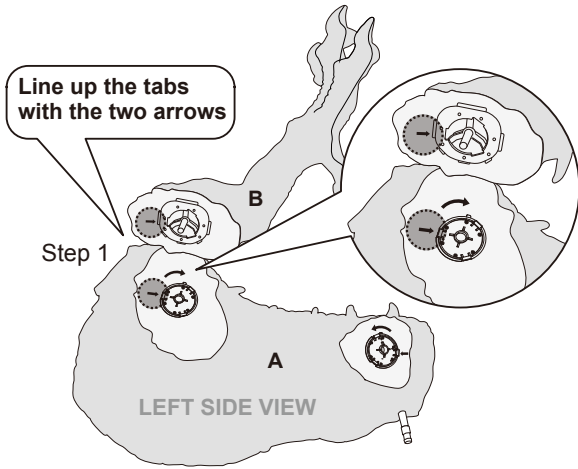
1. All cautions in these operating instructions should be followed completely.
2. Do not use near water; such as bathtub, laundry tub, kitchen sink, wet basement or swimming pool, etc.
3. Do not display figure near any heat source such as radiators, stoves, fireplaces, etc.
4. Display should be serviced by a qualified service person only. Do not attempt to service this unit beyond what is described in the operating instructions.
5. Take extra care when displaying any figure that may contain small parts around small children.
6. Use of this decoration should always be supervised by an adult.
7. Remove batteries when not in use.

WARNING: Changes or modifications to this unit not expressly approved by the party responsible for compliance could void the user's authority to operate the equipment.

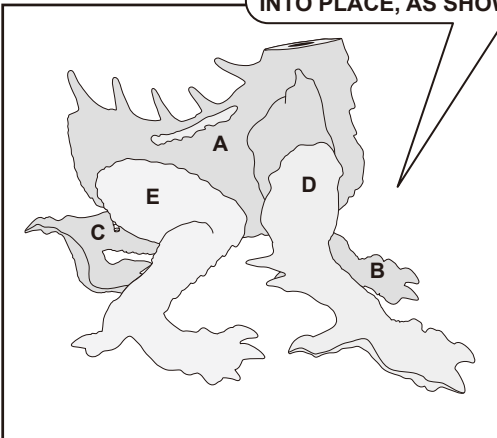
NOTE: This equipment has been tested and found to comply with the limits for a Class B digital device, pursuant to Part 15 of the FCC Rules. These limits are designed to provide reasonable protection against harmful interference in a residential installation. This equipment generates, uses and can radiate radio frequency energy and, if not installed and used in accordance with the instructions, may cause harmful interference to radio communications. However, there is no guarantee that interference will not occur in a particular installation. If this equipment does cause harmful interference to radio or television reception, which can be determined by turning the equipment off and on, the user is encouraged to try to correct the interference by one or more of the following measures:

- Reorient or relocate the receiving antenna.
- Increase the separation between the equipment and receiver.
- Connect the equipment into an outlet on a circuit different from that to which the receiver is connected.
- Consult the dealer or experienced radio/TV technician for help.

1. INSTALL FOUR LEGS

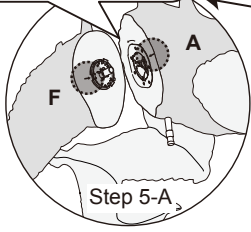


REPEAT THE PROCESS ON THE OTHER SIDE UNTIL ALL 4 LEGS ARE LOCKED INTO PLACE, AS SHOWN

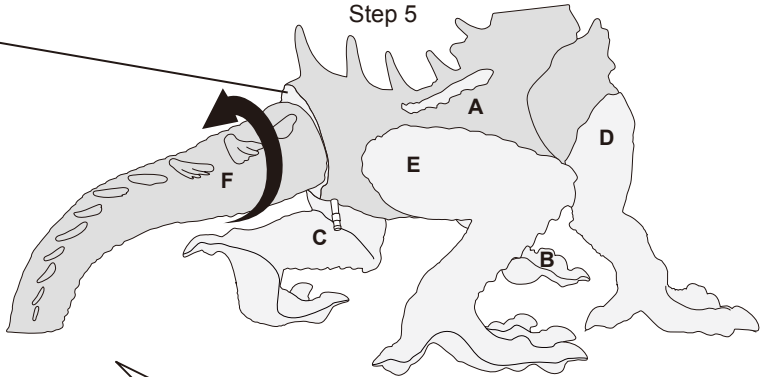


2. INSTALL TAIL

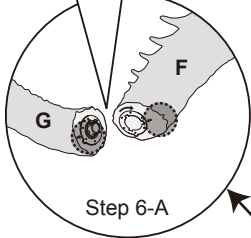
Line up the tabs with the two arrows



Step 5

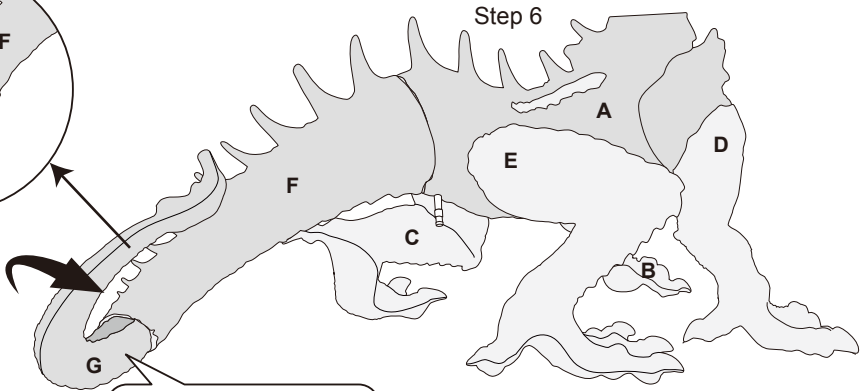


Line up the tabs with the two arrows



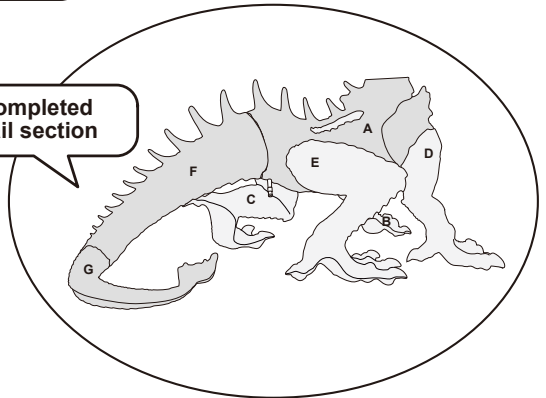
Following arrows, Turn tail counterclockwise to lock in place.

Step 6



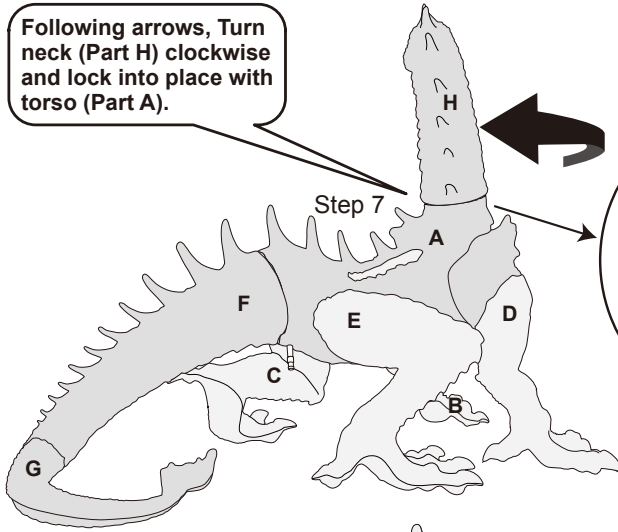
Following arrows, Turn tail clockwise to lock in place.

completed tail section

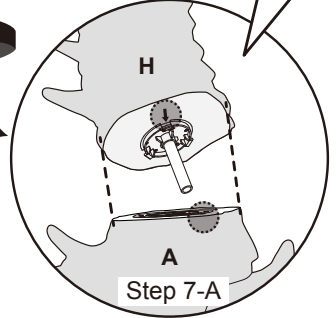


3. INSTALL NECK AND HEAD

Following arrows, Turn neck (Part H) clockwise and lock into place with torso (Part A).



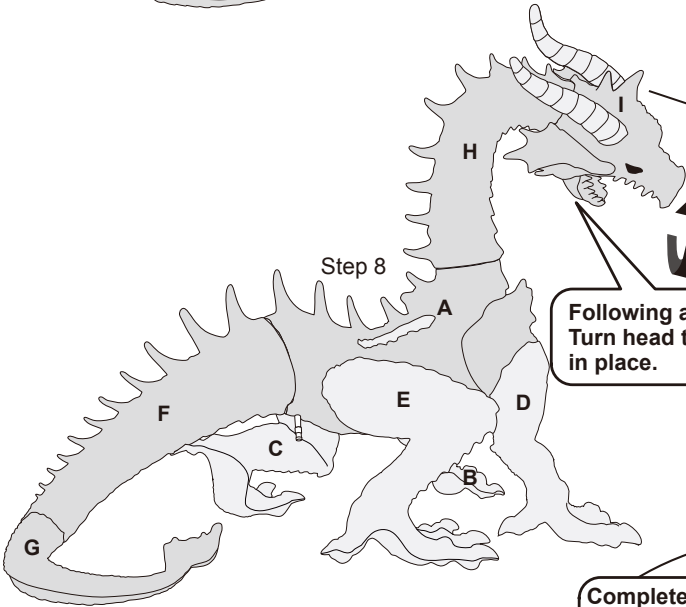
Line up the tabs with the two arrows



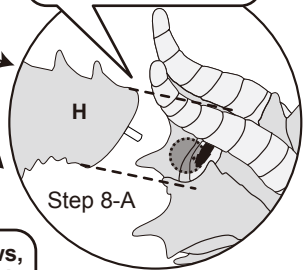
Step 7

Step 7-A

Line up the tabs with the two arrows



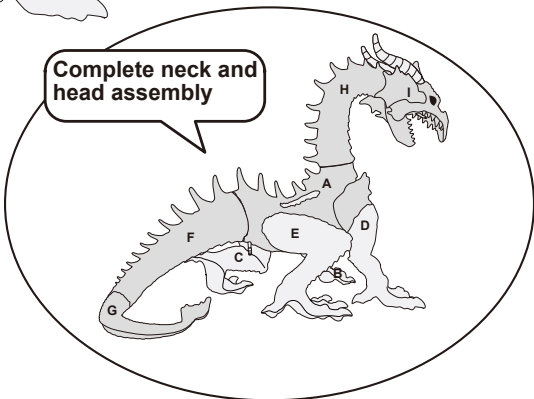
Following arrows, Turn head to lock in place.



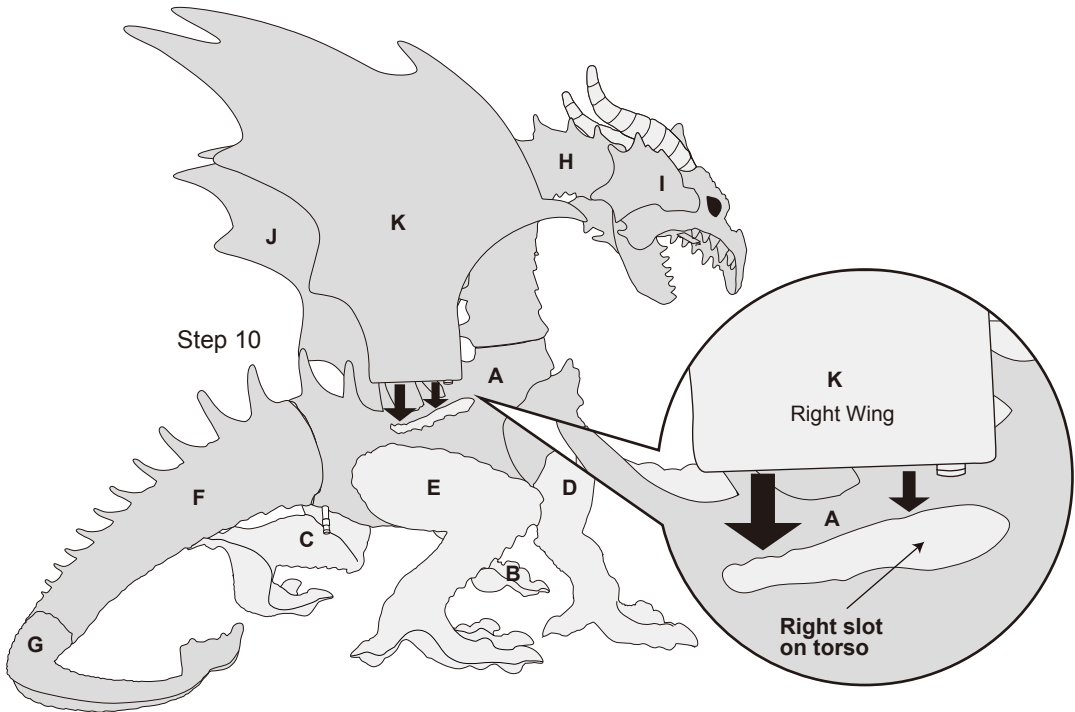
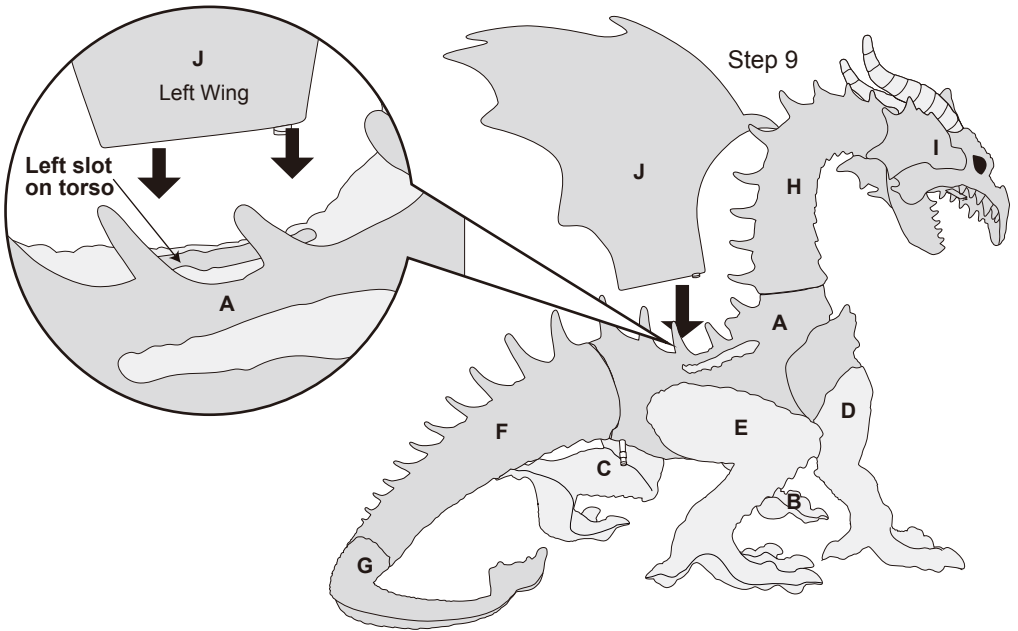
Step 8

Step 8-A

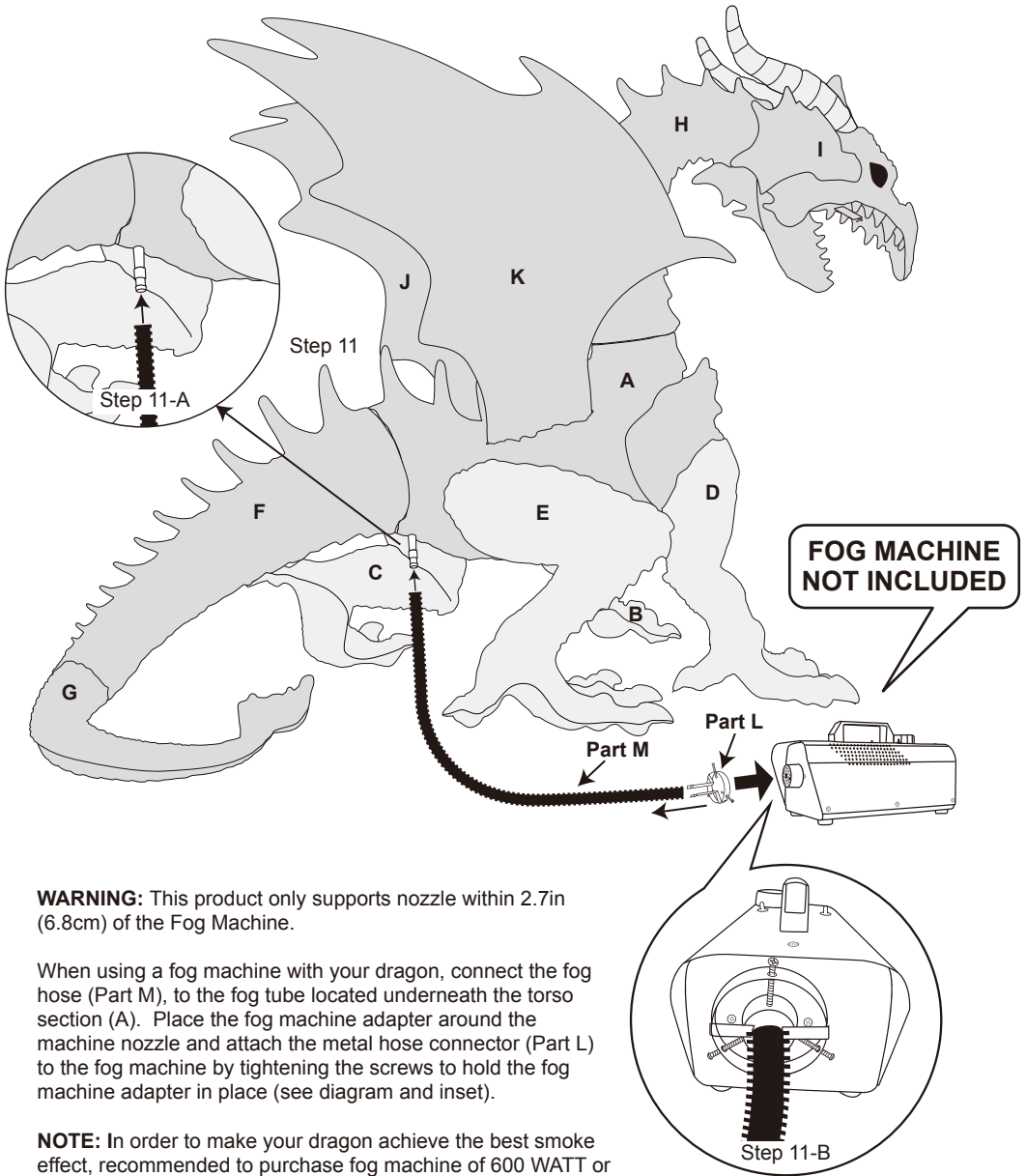
Complete neck and head assembly



4. INSTALL WINGS



5. INSTALL FOG MACHINE ADAPTER AND FOG HOSE



WARNING: This product only supports nozzle within 2.7in (6.8cm) of the Fog Machine.

When using a fog machine with your dragon, connect the fog hose (Part M), to the fog tube located underneath the torso section (A). Place the fog machine adapter around the machine nozzle and attach the metal hose connector (Part L) to the fog machine by tightening the screws to hold the fog machine adapter in place (see diagram and inset).

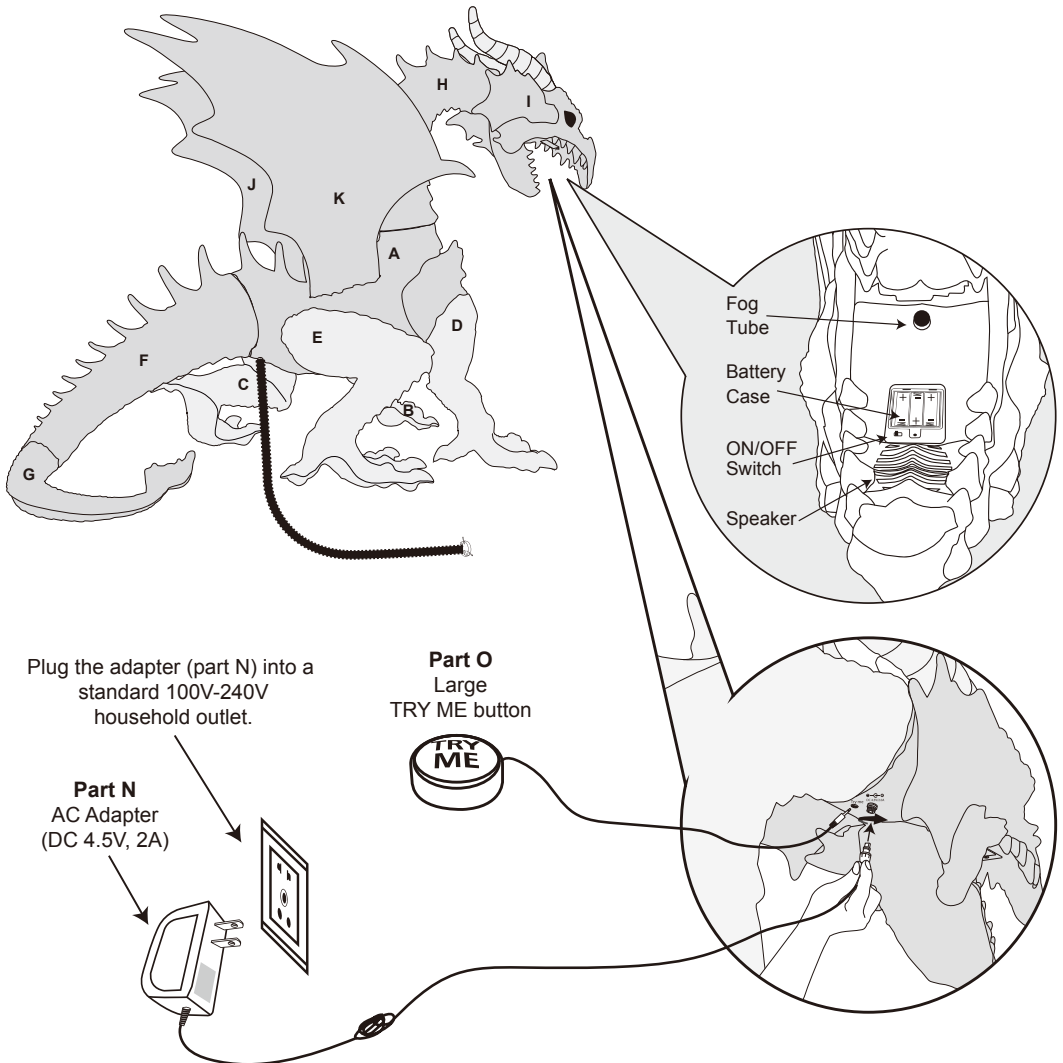
NOTE: In order to make your dragon achieve the best smoke effect, recommended to purchase fog machine of 600 WATT or more.

6. TO ACTIVATE

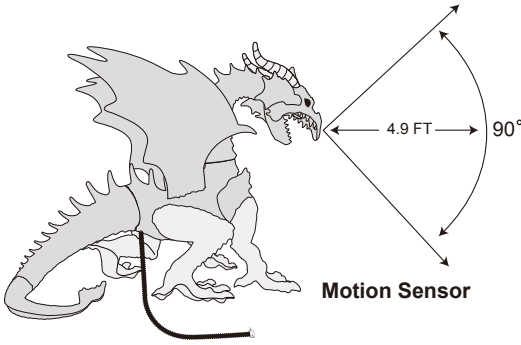
THIS ITEM CAN BE USED WITH AN AC/DC ADAPTER (INCLUDED) OR BATTERY OPERATED. THE DIAGRAM SHOWS THE CONNECTION POINT UNDER THE BASE FOR THE ADAPTER.

Requires 3 "AA" batteries (batteries are included).

1. Remove the battery compartment cover, which is located inside Dragon's mouth. Using a small screwdriver, remove the safety screw and then remove the battery compartment cover (as shown in the diagram)
2. Clean the battery contacts and also those of the device prior to battery installation.
3. Insert 3 new "AA" batteries with correct polarity and replace cover and safety screw.
4. The ON/OFF switch is located on the battery case. Place the switch into the "ON" position to activate the "Motion Sensor" function. When activated, the Giant Dragon will come to life. (Note: The "Motion Sensor" is activate at angle 90° and the detection zone within 4.9 feet). Place the Switch into the "OFF" position for in-store "Try-Me" feature and press the "Try-Me" button to see and hear a short demonstration.
5. Replace batteries if the movement becomes slow, LED's become dim or sound is distorted or faint.



7. TROUBLE SHOOTING:



Problem	Solution
The Dragon does not work	1. Check if the positive and negative terminals of the battery are installed correctly.
	2. Check whether the battery is drained. Replace the new battery or plug the adapter into a standard 100V-240V household outlet and try again.
The motion sensor does not work	1. Check the ON/OFF switch is located in the "ON" position.
	2. Examine if there is an obstruction on the surface of the motion sensor.
	3. Change the product placement environment and try again.
	4. Check if the ambient temperature is too high. Place the product in a normal temperature environment.
<p>If you are still experiencing problems with the dragon please call 1-877-527-0313 for instructions.</p>	



For more detailed instructions on assembly, Please scan QR code with Home Depot app from your mobile device, Or view an online tutorial at: <https://www.pan-asian.com/?portfolio=fire-dragon>