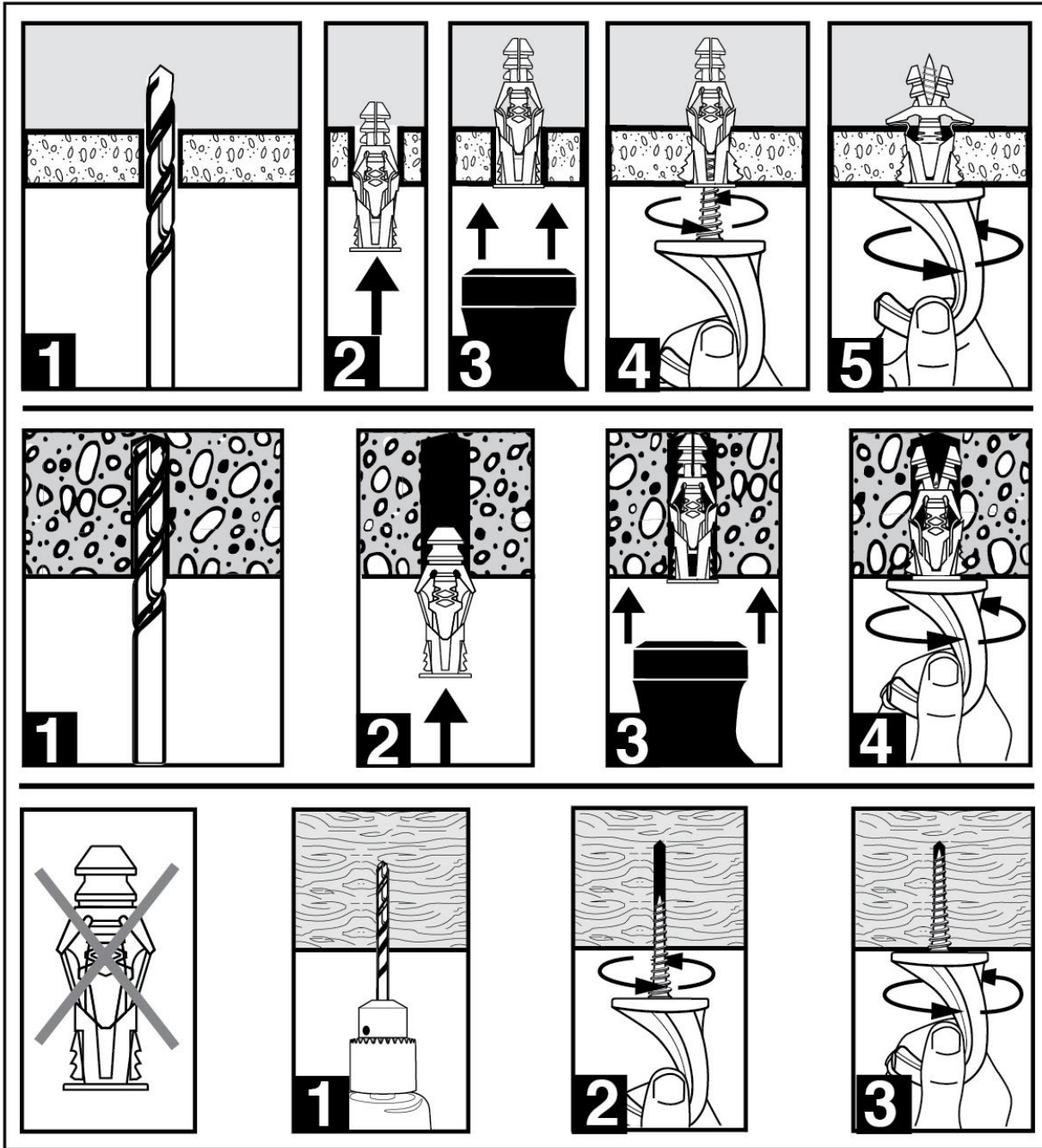


## Installation instructions



1. Pre-drill a hole using a 5/16" drill bit.
2. Insert the TripleGrip™ into wall or ceiling
3. Tap in with a hammer flush to the wall.
4. Insert the Versahook™ into the TripleGrip™
5. Screw clockwise until firmly set in place.

When installing into wood, do not use the TripleGrip™

1. Pre-drill a hole using a 5/16" drill bit.
2. Insert and screw the Versahook™ into the wood.
3. Screw until firmly set in place.