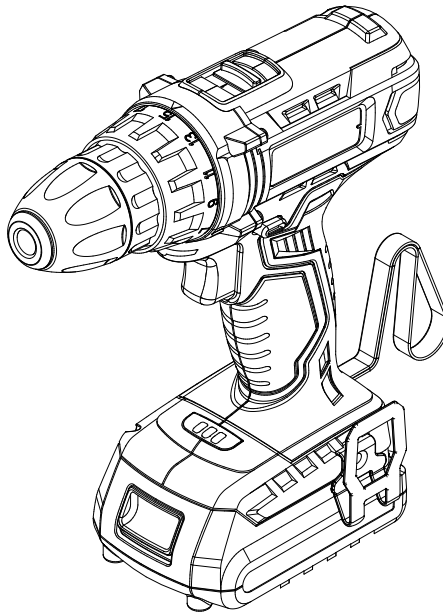




# 20V MAX CORDLESS DRILL



Model # 49120  
[bit.ly/wenvideo](http://bit.ly/wenvideo)

## IMPORTANT:

Your new tool has been engineered and manufactured to WEN's highest standards for dependability, ease of operation, and operator safety. When properly cared for, this product will supply you years of rugged, trouble-free performance. Pay close attention to the rules for safe operation, warnings, and cautions. If you use your tool properly and for intended purpose, you will enjoy years of safe, reliable service.



## NEED HELP? CONTACT US!

Have product questions? Need technical support?  
Please feel free to contact us at:



**800-232-1195** (M-F 8AM-5PM CST)



**techsupport@wenproducts.com**



**WENPRODUCTS.COM**

## TABLE OF CONTENTS

---

Technical Data .....	2
General Safety Rules .....	3
Specific Safety Rules for Batteries & Chargers .....	5
Electrical Information .....	8
Know Your Drill .....	9
Operation .....	10
Maintenance .....	11
Exploded View .....	12
Parts List .....	13
Warranty .....	14

## TECHNICAL DATA

---

Model Number:	49120
Charger Input Voltage:	120V, 60 Hz, 0.5A, 60W
Charger Output Voltage:	20V, 2.0A, 40W
Battery Specs:	20V Max, 1.5 Ah
Torque Settings:	19+1
Max Torque:	35 N.m
Chuck Capacity:	3/8 inch
Low Speed (Position 1):	0 to 400 RPM
High Speed (Position 2):	0 to 1,100 RPM
Dimensions:	3 x 7.5 x 8.5 inches
Weight:	3.0 lbs

## GENERAL SAFETY RULES

You know the drill. The purpose of the following safety symbols is to attract your attention to possible dangers. We don't want any of our beloved WEN customers accidentally injuring themselves. The safety symbols and the explanations with them deserve your careful attention and understanding. The safety warnings do not by themselves eliminate any danger. These instructions and warnings are not substitutes for proper accident prevention measures.



**Safety Alert Symbol:** Indicates danger, warning, or caution. This may be used in conjunction with other symbols. Always follow the safety precautions to reduce the risk of fire, electric shock and personal injury.

**NOTE:** Advising you of information or instructions is vital to the operation and maintenance of the equipment.

### **IMPORTANT:**

Servicing requires extreme care and knowledge and should be performed only by a qualified service technician.



**WARNING -** Do not attempt to operate this tool until you have thoroughly read and understood all instructions, safety rules, etc...contained in this manual. Failure to comply can result in accidents involving fire, electric shock, or serious personal injury. Save this operator's manual and review frequently for continuing safe operation and instructing others who may use this tool.

Safe operation of this power tool requires that you read and understand this operator's manual and all labels affixed to the tool. Safety is a combination of staying alert, knowing how your tool works, and not doing dumb stuff.

## GENERAL SAFETY RULES

---

Safety is a combination of common sense, staying alert, knowing how your item works, and not doing dumb stuff on purpose. **SAVE THESE SAFETY INSTRUCTIONS.**



**WARNING:** To avoid mistakes and serious injury, do not plug in your tool until the following steps have been read and understood.

1. **READ** and become familiar with this entire instruction manual. **LEARN** the tool's applications, limitations, and possible hazards.
2. **AVOID DANGEROUS CONDITIONS.** Do not use power tools in wet or damp areas or expose them to rain. Keep work areas well lit.
3. **DO NOT** use power tools in the presence of flammable liquids or gases.
4. **ALWAYS** keep your work area clean, uncluttered, and well lit. **DO NOT** work on floor surfaces that are slippery with sawdust or wax.
5. **KEEP BYSTANDERS AT A SAFE DISTANCE** from the work area, especially when the tool is operating. **NEVER** allow children or pets near the tool.
6. **DO NOT FORCE THE TOOL** to do a job for which it was not designed.
7. **DRESS FOR SAFETY.** Do not wear loose clothing, gloves, neckties, or jewelry (rings, watches, etc.) when operating the tool. Inappropriate clothing and items can get caught in moving parts and draw you in. **ALWAYS** wear non-slip footwear and tie back long hair.
8. **WEAR A FACE MASK OR DUST MASK** to fight the dust produced during operation.



**WARNING:** Dust generated from certain materials can be hazardous to your health. Always operate the tool in a well-ventilated area and provide for proper dust removal. Use dust collection systems whenever possible.

9. **ALWAYS** remove the power cord plug from the electrical outlet when making adjustments, changing parts, cleaning, or working on the tool.
10. **KEEP GUARDS IN PLACE AND IN WORKING ORDER.**
11. **AVOID ACCIDENTAL START-UPS.**
12. **REMOVE ADJUSTMENT TOOLS.** Always make sure all adjustment tools are removed from the drill before turning it on.
13. **NEVER LEAVE A RUNNING TOOL UNATTENDED.** Turn the power switch to OFF. Do not leave the tool until it has come to a complete stop.
14. **NEVER STAND ON A TOOL.** Serious injury could result if the tool tips or is accidentally hit. **DO NOT** store anything above or near the tool.

## GENERAL SAFETY RULES

---

15. **DO NOT OVERREACH.** Keep proper footing and balance at all times. Wear oil-resistant rubber-soled footwear. Keep the floor clear of oil, scrap, and other debris.
16. **MAINTAIN TOOLS PROPERLY.** ALWAYS keep tools clean and in good working order. Follow instructions for lubricating and changing accessories.
17. **CHECK FOR DAMAGED PARTS.** Check for alignment of moving parts, jamming, breakage, improper mounting, or any other conditions that may affect the tool's operation. Any part that is damaged should be properly repaired or replaced before use.
18. **MAKE THE WORKSHOP CHILDPROOF.** Use padlocks and master switches and ALWAYS remove starter keys.
19. **DO NOT** operate the tool if you are under the influence of drugs, alcohol, or medication that may affect your ability to properly use the tool.
20. **USE SAFETY GOGGLES AT ALL TIMES** that comply with ANSI Z87.1. Normal safety glasses only have impact resistant lenses and are not designed for safety. Wear a face or dust mask when working in a dusty environment. Use ear protection such as plugs or muffs during extended periods of operation.

## SAFETY RULES FOR BATTERIES

---

1. Ensure the switch trigger is in the off position before inserting the battery back.
2. Only recharge the battery with the charger specified by the manufacturer. A charger that is suitable for one type of battery pack may create undesirable risks such as fire or death when used with another battery pack.
3. Only use the tool with the battery specified by the manufacturer.
4. Avoid storing the battery pack in a container with other metal objects such as nails, coins, clips, keys, screws, or other small metal objects that could potentially connect one terminal to the other. Always protect the battery terminals when the battery pack is not being used. Connecting the terminals together may cause burns or fire.
5. Under abusive conditions, liquid may be ejected from the battery. Avoid contact with this liquid like you would a fire or an ex-lover. If contact accidentally occurs, flush the contact area with water. If the liquid contacts your eyes, flush with water for 10 minutes and then seek medical help. Liquid ejected from the battery may cause irritation or burns.
6. Battery tools do not need to be plugged into an electrical outlet, therefore they are always ready to operate. Beware of the possible hazards when not using your battery tool or when changing accessories. Following this rule will reduce the risk of electric shock, fire or personal injury.
7. Before using the battery charger, read all cautionary markings on the battery, the battery charger and the product using the battery.
8. Do not expose the battery pack or the charger to damp environments such as water or rain.
9. Do not operate the charger with a damaged cord or plug.

## SAFETY RULES FOR BATTERIES

---

10. Do not operate the charger or the battery if it has received a sharp blow, either from being dropped or damaged. Take it to a qualified service technician before attempting to use.
11. Do not disassemble the charger or the battery pack. Take these to a qualified service technician when service or repairs are required. Incorrect assembly may result in electric shock or fire.
12. Do not charge the battery pack when the temperature is below 50 degrees F (10 degrees C) or above 104 degrees F (40 degrees C). Store the tool and battery pack in a location where temperatures will not exceed 122 degrees F (50 degrees C). This will help prevent serious damage to the battery cells.
13. Place the charger on a flat non-flammable surface and away from flammable materials when re-charging the battery packs.
14. To reduce the risk of electric shock, unplug the charger from the outlet before attempting any maintenance or cleaning.
15. If operating time has become excessively shorter, stop operating immediately. It may result in overheating, burning, or even an explosion.
16. Do not attempt to use a step-up transformer, an engine generator or a DC power receptacle.
17. Do not short the battery pack. Do not touch the terminals with any conductive material. Avoid storing the battery pack in a container with other metal objects such as nails, coins, etc. Always protect the battery terminals when the battery pack is not in use.
18. Do not charge the battery pack inside a box or container of any kind. The battery must be placed in a well-ventilated area during charging.
19. Do not allow anything to cover or clog the charging vents.
20. Do not incinerate the battery pack, even if you think it might be cool. The battery pack can explode in a fire and pose a threat to anyone in the immediate area, which in my opinion isn't cool at all.
21. Disconnect the charger from the power source when not in use. This will reduce the risk of electric shock or damage to the charger if metal pieces should fall into the opening. It also will help prevent damage to the charger during a power surge.
22. Make sure the trigger switch isn't pressed before plugging in the battery.
23. The battery should be charged completely the first time of use.

## SAFETY RULES FOR CHARGERS

---

### **CHARGER**

Protect the battery charger and its cord from damage. Keep the charger and its cord away from heat, oil and sharp edges. Electrical plugs must match the outlet. Never modify the plug in any way. Do not use any adapter plugs with grounded appliances. Unmodified plugs and matching outlets will reduce the risk of electric shock.

Keep the battery charger, battery pack(s) and the cordless tool out of the reach of children. Do not use the supplied battery charger to charge other cordless tools. During periods of heavy use, the battery pack will become warm. Allow the battery pack to cool to room temperature before inserting it into the charger to recharge.

Do not overcharge batteries. Do not exceed the maximum charging times. These charging times only apply to discharged batteries. Frequent insertion of a charged or partially charged battery pack will result in overcharging and cell damage. Do not leave battery in the charger for days on end. Never use or charge a battery if you suspect that it has been more than 12 months since the last time they were charged. There is a high probability that the battery pack has already suffered dangerous damage (exhaustive discharge). Do not use battery that have been exposed to heat during the charging process, as the battery cells may have suffered dangerous damage. Do not use battery that have suffered curvature or deformation during the charging process or those that exhibit other atypical symptoms (gassing, hissing, cracking, etc.)

# ELECTRICAL INFORMATION

## GROUNDING INSTRUCTIONS

**IN THE EVENT OF A MALFUNCTION OR BREAKDOWN**, grounding provides the path of least resistance for an electric current and reduces the risk of electric shock. This tool is equipped with an electric cord that has an equipment grounding conductor and a grounding plug. The plug **MUST** be plugged into a matching outlet that is properly installed and grounded in accordance with **ALL** local codes and ordinances.

**DO NOT MODIFY THE PLUG PROVIDED.** If it will not fit the outlet, have the proper outlet installed by a licensed electrician.

**IMPROPER CONNECTION** of the equipment grounding conductor can result in electric shock. The conductor with the green insulation (with or without yellow stripes) is the equipment grounding conductor. If repair or replacement of the electric cord or plug is necessary, **DO NOT** connect the equipment grounding conductor to a live terminal.

**CHECK** with a licensed electrician or service personnel if you do not completely understand the grounding instructions or whether the tool is properly grounded.

**CAUTION:** In all cases, make certain the outlet in question is properly grounded. If you are not sure, have a licensed electrician check the outlet.



**WARNING:** This tool is for indoor use only. Do not expose to rain or use in damp locations.  
Guidelines for using extension cords

Make sure your extension cord is in good condition. When using an extension cord, be sure to use one heavy enough to carry the current your product will draw. An undersized cord will cause a drop in line voltage resulting in loss of power and overheating. The table below shows the correct size to be used according to cord length and nameplate ampere rating. When in doubt, use a heavier cord. The smaller the gauge number, the heavier the cord.

AMPERAGE	REQUIRED GAUGE FOR EXTENSION CORDS			
	25 ft.	50 ft.	100 ft.	150 ft.
0.5 A	18 gauge	16 gauge	14 gauge	12 gauge

Make sure your extension cord is properly wired and in good condition. Always replace a damaged extension cord or have it repaired by a qualified person before using it.

Protect your extension cords from sharp objects, excessive heat and damp/wet areas.

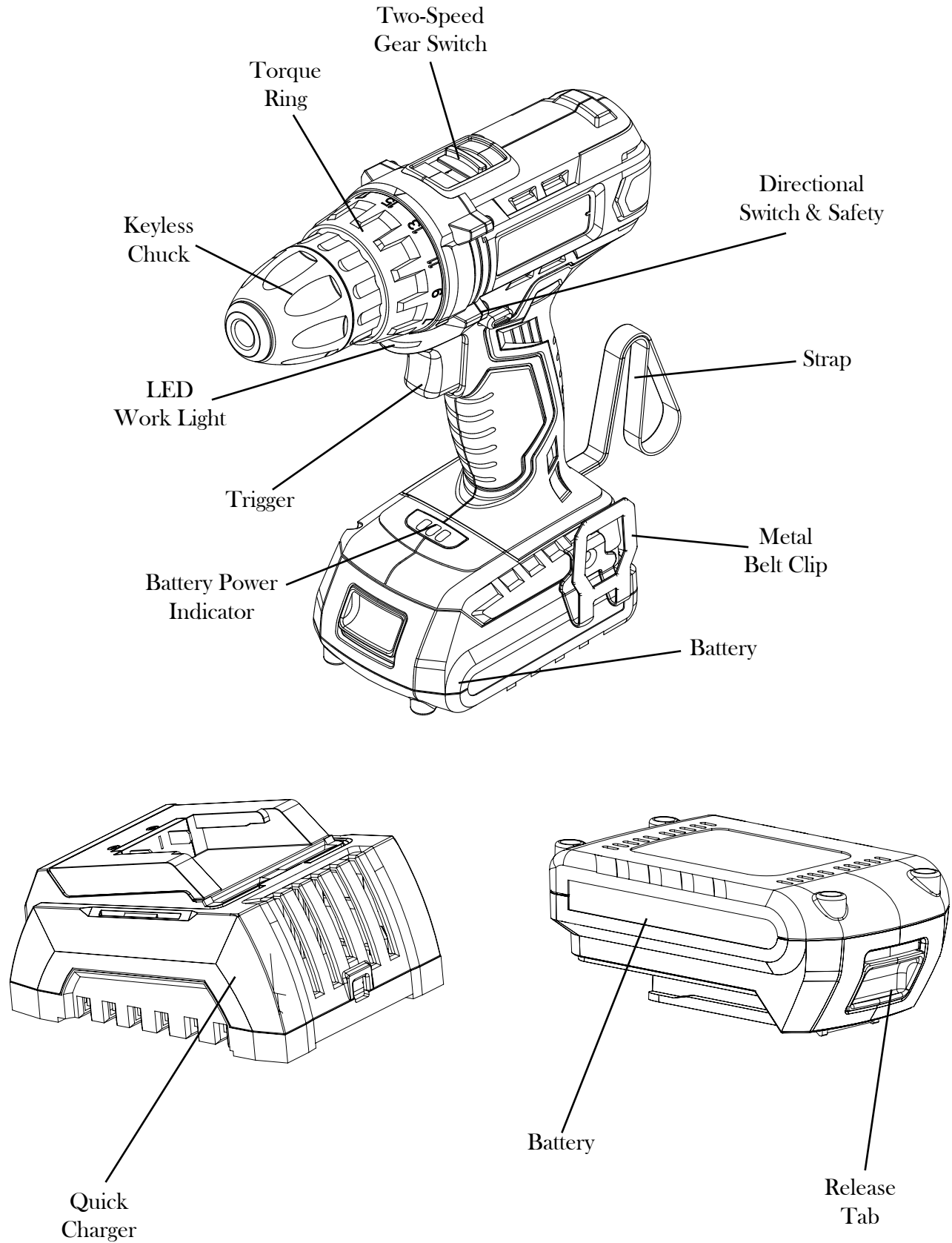
Use a separate electrical circuit for your tools. This circuit must not be less than a #12 wire and should be protected with a 15 A time-delayed fuse. Before connecting the motor to the power line, make sure the switch is in the **OFF** position and the electric current is rated the same as the current stamped on the motor nameplate. Running at a lower voltage will damage the motor.

**WARNING:** This tool must be grounded while in use to protect the operator from electric shock.



# KNOW YOUR DRILL

---



# OPERATION

---

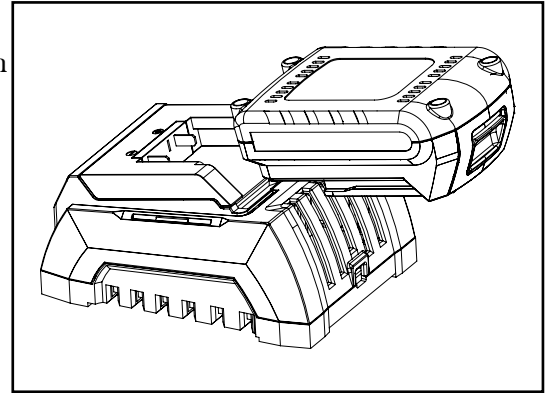
## INSTALLING OR REMOVING THE BATTERY

Look, we both know that you understand how to put this battery into the drill. It's not rocket science. I'm going to tell you anyway though because once these manuals stop needing to be written, then I'm out of a job.

1. Slide the battery pack into the bottom of the tool housing until it locks into place with a click. Lightly tug on the battery to ensure it has been locked in place and will not accidentally slide out of the tool.
2. To remove the battery pack, pull the battery pack away from the tool while pressing down on the locking tab.

## CHARGING THE BATTERY

1. Plug the charger adapter into a 120 volt AC power source. The green light on the charger stand will illuminate, indicating the charger is powered.
2. Slide the battery all the way into the charger stand until it locks in place with a click. The red light on the charger stand will illuminate, indicating that the battery is charging.
3. The red light will go off after charging is complete and a green light will appear.



**NOTE:** Batteries may become warm while charging. This is normal. If the battery is hot after continuous use in the tool, allow it to cool down to room temperature before charging. This will extend the life of your batteries.



**WARNING:** Always disconnect the battery pack from the tool before any assembly, adjustments or changing accessories.

## TRIGGER SWITCH ACTION

1. Turn the drill on by pressing the trigger. The switch is pressure sensitive, meaning that pushing the trigger down farther produces a higher torque and speed in comparison to pushing it lightly.
2. Use the directional switch to change the direction of the drill's rotation. The switch has three positions: forward, reverse and OFF (middle). Always check the rotation before beginning your work.

## LED WORK LIGHT

Your tool has a built-in LED work light to illuminate the work area. When you turn on the tool, the work light will automatically turn on.

## TWO-SPEED GEAR SWITCH

Slide the gear switch to choose between position 1 for the low speed range (0 to 400 RPM) or to position 2 for the high speed range (0 to 1,100 RPM). The low speed range has more power and torque while the high speed range works for jobs needing faster drilling and driving applications.

## ELECTRIC BRAKE

The drill is equipped with an electric brake. Like the torque settings, an electric brake provides you with another element of control during the various operations. If the tool consistently fails to quickly stop after the trigger has been released, have a qualified serviceman examine the tool.

## OPERATION

---

### CHUCK

Your drill is equipped with a single sleeve keyless chuck, so you can quickly change bits with no extra tools required. To install bits, place the reversing switch in the **OFF** position and unplug the battery from the tool. Rotate the chuck's body counterclockwise to open the chuck jaws to a point where the opening is slightly larger than the desired bit size. Insert the bit and tighten the jaws by rotating the chuck clockwise to secure it in place.

### CLUTCH & TORQUE SETTINGS

During screw driving applications, you can adjust the maximum torque the drill produces. This feature can be used to prevent the stripping and breaking of screws, or to set a series of screws to a depth that fits your project.

Set the torque ring to setting number 1 for the lightest torque or setting number 19 for the heaviest. Setting the mark on the **SCREW** symbol is direct drive (the torque is not limited) and used primarily for drilling operations.

### GENERAL SCREWDRIVING

1. Clamp your workpiece down.
2. Drill pilot holes for larger screws or when driving screws into harder woods.
3. Exert enough pressure to start the screw and keep it turning. Do not force the screw. Let the tool do the work.
4. Use a speed that will not strip the screw head or break the screw. Maintain your balance.

### GENERAL DRILLING

1. Clamp your workpiece down. Turn the torque setting to the **SCREW** symbol. Exert enough pressure to start the drill bit. Once the drill has entered the workpiece, keep drilling. Do not force or stall the bit. Do not bend or twist the bit. Let the tool and the drill bit do the work.
2. Maintain your balance and be prepared for binding when the bit breaks through.

## MAINTENANCE

---

### CLEANING

Avoid using solvents when cleaning plastic parts. Most plastics are susceptible to damage from various types of commercial solvents and may be damaged by their use. Use clean cloths to remove dirt, dust, oil, grease, etc.

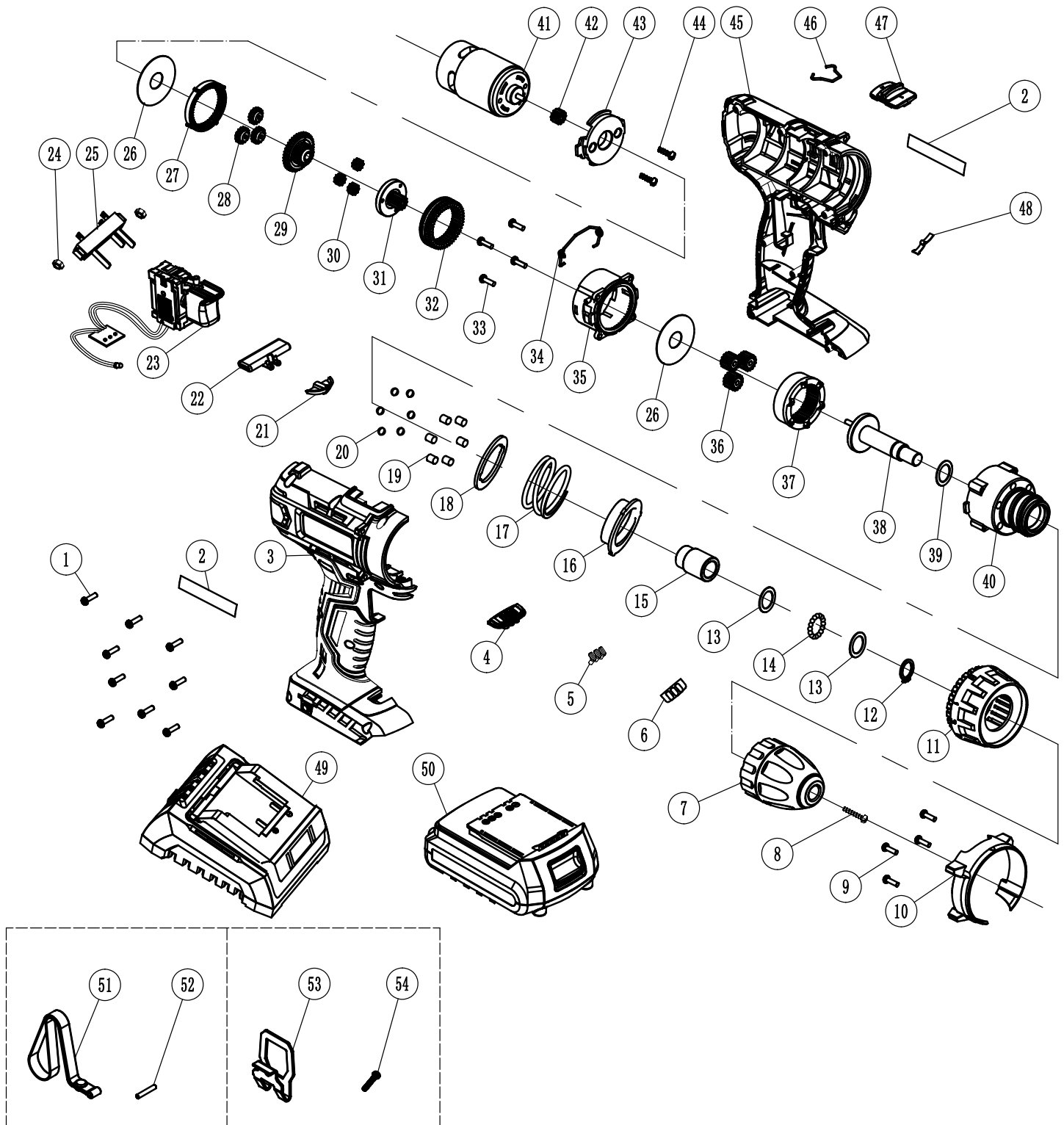
**WARNING:** Do not at any time let brake fluids, gasoline, petroleum-based products, penetrating oils, etc. come in contact with the plastic parts. Chemicals can damage, weaken or destroy plastic which may result in serious personal injury.

Electric tools used on fiberglass material, wallboard, spackling compounds or plaster are subject to accelerated wear and possible premature failure because the fiberglass chips and grindings are highly abrasive to bearings, brushes, commutators, etc. Consequently we do not recommend using this tool for extended work on these types of materials. However if you do work with any of these materials, it is extremely important to clean the tool using compressed air.

### LUBRICATION

This tool is permanently lubricated at the factory and requires no additional lubrication.

# EXPLODED VIEW



## EXPLODED VIEW

---

No.	Part Number	Part Description	Qty.
1	49120-001	Screw	9
2	49120-002	Right Label	2
3	49120-003	Right Housing	1
4	49120-004	Battery Power Indicator	1
5	49120-005	Light Bulb	3
6	49120-006	Power Indicator Label	1
7	49120-007	Chuck	1
8	49120-008	Screw M5X20	1
9	49120-009	Screw	4
10	49120-010	Housing Sleeve	1
11	49120-011	Torque Selector	1
12	49120-012	Ø12 Retaining Ring	1
13	49120-013	Flat Washer	2
14	49120-014	Ø3 Steel Ball	16
15	49120-015	Bushing	1
16	49120-016	Threaded Sleeve	1
17	49120-017	Compression Spring	1
18	49120-018	Spring Washer	1
19	49120-019	Pin	1
20	49120-020	Ø5 Steel Ball	12
21	49120-021	LED Light Cover	1
22	49120-022	Directional Selector	1
23	49120-023	Trigger	1
24	49120-024	Nut M4x3.2	2
25	49120-025	Battery Clamp	1
26	49120-026	Washer	2
27	49120-027	Annular Gear	1

No.	Part Number	Part Description	Qty.
28	49120-028	Planetary Gear	3
29	49120-029	Sun Gear	1
30	49120-030	Planetary Gear	3
31	49120-031	Sun Gear	1
32	49120-032	Shifting Annular Gear	1
33	49120-033	Screw	4
34	49120-034	Shift Wires	1
35	49120-035	Rear Gearbox	1
36	49120-036	Planetary Gear	3
37	49120-037	Large Annular Gear	1
38	49120-038	Output Shaft	1
39	49120-039	Flat Washer	1
40	49120-040	Front Gearbox	1
41	49120-041	18V 550 Motor	1
42	49120-042	Central Gear	1
43	49120-043	Toothed Box Cover	2
44	49120-044	Screw	1
45	49120-045	Left Housing	1
46	49120-046	Switch Spring	1
47	49120-047	Shift Switch	1
48	49120-048	Spring	1
49	49120C	Charger	1
50	49120B	Li-ion battery	1
51	49120-051	Wrist Strap	1
52	49120-052	Pin	1
53	49120-053	Belt clip	1
54	49120-054	Screw	1

## **LIMITED TWO YEAR WARRANTY**

---

WEN Products is committed to building tools that are dependable for years. Our warranties are consistent with this commitment and our dedication to quality.

### **LIMITED WARRANTY OF WEN CONSUMER POWER TOOLS PRODUCTS FOR HOME USE**

GREAT LAKES TECHNOLOGIES, LLC (“Seller”) warrants to the original purchaser only, that all WEN consumer power tools will be free from defects in material or workmanship for a period of two (2) years from date of purchase. Ninety days for all WEN products, if the tool is used for professional use.

**SELLER’S SOLE OBLIGATION AND YOUR EXCLUSIVE REMEDY** under this Limited Warranty and, to the extent permitted by law, any warranty or condition implied by law, shall be the repair or replacement of parts, without charge, which are defective in material or workmanship and which have not been misused, carelessly handled, or misrepaired by persons other than Seller or Authorized Service Center. To make a claim under this Limited Warranty, you must make sure to keep a copy of your proof of purchase that clearly defines the Date of Purchase (month and year) and the Place of Purchase. Place of purchase must be a direct vendor of Great Lakes Technologies, LLC. Third party vendors such as garage sales, pawn shops, resale shops, or any other secondhand merchant void the warranty included with this product. Contact [techsupport@wenproducts.com](mailto:techsupport@wenproducts.com) or 1-800-232-1195 to make arrangements for repairs and transportation.

When returning a product for warranty service, the shipping charges must be prepaid by the purchaser. The product must be shipped in its original container (or an equivalent), properly packed to withstand the hazards of shipment. The product must be fully insured with a copy of the warranty card and/or the proof of purchase enclosed. There must also be a description of the problem in order to help our repairs department diagnose and fix the issue. Repairs will be made and the product will be returned and shipped back to the purchaser at no charge.

**THIS LIMITED WARRANTY DOES NOT APPLY TO ACCESSORY ITEMS THAT WEAR OUT FROM REGULAR USAGE OVER TIME INCLUDING BELTS, BRUSHES, BLADES, ETC.**

**ANY IMPLIED WARRANTIES SHALL BE LIMITED IN DURATION TO TWO (2) YEARS FROM DATE OF PURCHASE. SOME STATES IN THE U.S., SOME CANADIAN PROVINCES DO NOT ALLOW LIMITATIONS ON HOW LONG AN IMPLIED WARRANTY LASTS, SO THE ABOVE LIMITATION MAY NOT APPLY TO YOU.**

**IN NO EVENT SHALL SELLER BE LIABLE FOR ANY INCIDENTAL OR CONSEQUENTIAL DAMAGES (INCLUDING BUT NOT LIMITED TO LIABILITY FOR LOSS OF PROFITS) ARISING FROM THE SALE OR USE OF THIS PRODUCT. SOME STATES IN THE U.S. AND SOME CANADIAN PROVINCES DO NOT ALLOW THE EXCLUSION OR LIMITATION OF INCIDENTAL OR CONSEQUENTIAL DAMAGES, SO THE ABOVE LIMITATION OR EXCLUSION MAY NOT APPLY TO YOU.**

**THIS LIMITED WARRANTY GIVES YOU SPECIFIC LEGAL RIGHTS, AND YOU MAY ALSO HAVE OTHER RIGHTS WHICH VARY FROM STATE TO STATE IN THE U.S., PROVINCE TO PROVINCE IN CANADA AND FROM COUNTRY TO COUNTRY.**

**THIS LIMITED WARRANTY APPLIES ONLY TO PORTABLE ELECTRIC TOOLS, BENCH POWER TOOLS, OUTDOOR POWER EQUIPMENT AND PNEUMATIC TOOLS SOLD WITHIN THE UNITED STATES OF AMERICA, CANADA AND THE COMMONWEALTH OF PUERTO RICO. FOR WARRANTY COVERAGE WITHIN OTHER COUNTRIES, CONTACT THE WEN CUSTOMER SUPPORT LINE.**