

Item #
Model #H4150



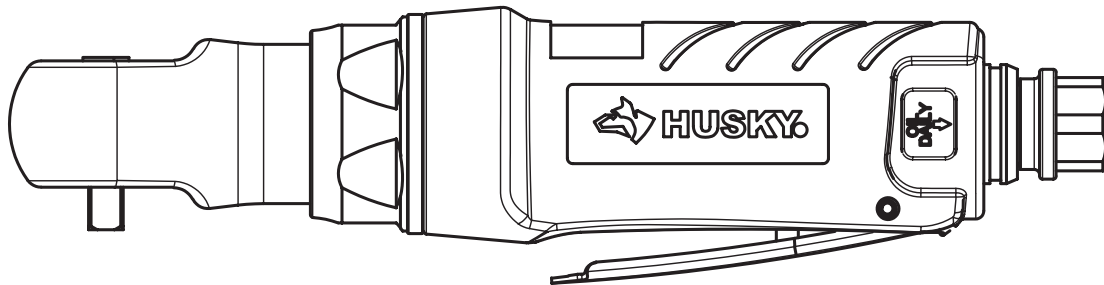
USE AND CARE GUIDE

1/4 IN AIR RATCHET WRENCH

Questions, problems, missing parts?
Before returning to the store, call
Husky Customer Service
8 a.m. - 6 p.m., EST, Monday-Friday

1-888-43-HUSKY

HUSKYTOOLS.COM



THANK YOU

We appreciate the trust and confidence you have placed in Husky through the purchase of this ratchet wrench. We strive to continually create quality products designed to enhance your home. Visit us online to see our full line of products available for your home improvement needs.

Thank you for choosing Husky!

Table of Contents

Table of Contents	2	Installation	5
Safety Information	2	Operation	6
Work Area Safety	2	Maintenance	7
Personal Safety	2	Lubrication	7
Air Compressor and Air Tool Safety	3	Troubleshooting	7
Warranty	3	Service Parts	8
Husky Air Tools Limited Two Year Warranty	3		
Additional Limitations	3		
Pre-Installation	4		
Specifications	4		
Package Contents	4		

Safety Information

WORK AREA SAFETY

1. Keep your work area clean and well lit. Ensure floors are not slippery from wax or dust.
2. Do not operate power tools in explosive atmospheres, such as in the presence of flammable liquids, gases, or dust. Power tools create sparks which may ignite the dust or fumes. Keep bystanders, children, and visitors away while operating tools. Distractions can cause you to lose control.
3. Always disconnect the air supply and power supply before making adjustments, servicing a tool, changing an accessory or when a tool is not in use.
4. For further information on the safe use of air tools, we advise you to obtain a copy of CAGI B186.1-2009 from
Husky Air Tools
851 Jupiter Park Lane
Jupiter, Florida 33458
(877) 260-1630.

PERSONAL SAFETY

1. Use safety equipment. Always wear eye protection with side shields when operating power tools. Dust mask, nonskid safety shoes, hard hat, or hearing protection must be used for appropriate conditions.
2. Stay alert when operating a power tool. Do not use the tool while tired or under the influence of drugs, alcohol, or medication.
3. Do not wear loose clothing or jewelry. Contain long hair. Keep your hair, clothing, and gloves away from moving parts. Loose clothes, jewelry, or long hair can be caught in moving parts.
4. Keep proper footing and balance at all times. Proper footing and balance enables better control of the tool in unexpected situations.
5. Do not use on a ladder or unstable support.



WARNING: Risk of injury to persons. Read and understand operation instructions. Always become familiar with all the instructions and warnings before operating any pneumatic tool.



WARNING: Some dust created by power sanding, sawing, grinding, drilling and other construction activities contains chemicals known to cause cancer, birth defects or other reproductive harm. Some examples of these chemicals are:

Lead from lead based paint, crystalline silica from bricks and cement and other masonry products, arsenic and chromium from chemically-treated lumber.

Your risk from those exposures varies, depending on how often you do this type of work. To reduce your exposure to these chemicals: work in a well-ventilated area, and work with approved safety equipment, such as dust masks that are specifically designed to filter out microscopic particles.



CAUTION: This product contains chemicals known to the State of California to cause cancer and birth defects or other reproductive harm. Wash hands after handling.

Safety Information (continued)

AIR COMPRESSOR AND AIR TOOL SAFETY

1. Risk of Bursting. Do not adjust the regulator to result in output pressure greater than the marked maximum pressure of this air tool.
2. Ensure the hose is free of obstructions or snags. Entangled or snarled hoses can cause loss of balance or footing and may become damaged.
3. Never leave a tool unattended with the air hose attached.
4. Do not operate this tool if it does not contain a legible warning label.
5. Do not continue to use a tool or hose that leaks air or does not function properly.
6. Never direct a jet of compressed air toward people or animals.
7. Protect your lungs. Wear a face or dust mask if the operation is dusty.



WARNING: Hearing Protection is Recommended
Hearing protection should be used when the noise level exposure equals or exceeds an 8 hour time-weighted average sound level of 85dBA.



WARNING: Do not use at a pressure greater than the rated maximum pressure of this air tool.



WARNING: Do not attempt to modify this tool or create accessories not recommended for use with this tool. Any such alteration or modification is misuse and could result in a hazardous condition leading to possible serious personal injury.



WARNING: Operating any power tool can result in foreign objects being thrown into your eyes, which can result in severe eye damage. Before beginning operation, always wear safety goggles, safety glasses with side shields, or a full face shield when needed. Always use eye protection marked to comply with ANSI Z87.1.



WARNING: Avoid Prolonged Exposure to Vibration
Pneumatic tools can vibrate during use. Prolonged exposure to vibration or very repetitive hand and arm movements, can cause injury. Stop using any tool if discomfort, tingling feeling or pain occurs. You should consult your physician before resuming use of the tool.

Warranty

HUSKY AIR TOOLS LIMITED TWO YEAR WARRANTY

If within two years from the date of purchase, this Husky air tool product fails due to a defect in materials or workmanship, please immediately contact the Customer Service Team at 1-888-43-HUSKY 8 a.m. - 6 p.m., EST, Monday-Friday, except normal holidays. Do not return the air tool to the store. Please be prepared to send the product, postage prepaid, to the address provided by the Customer Service Team. The package must also include a copy of the dated first owner purchase receipt with the air tool model included and circled. The serial number and month/year of manufacture of the air tool must also be included to determine warranty. A defective product will be promptly replaced with a new one of equal or greater value. This warranty excludes incidental/consequential damages and failures due to misuse, abuse or normal wear and tear. This warranty gives you specific rights, and you may also have other rights, which vary, from state to state.

Please contact the Customer Service Team at 1-888-43-HUSKY or visit www.HUSKYTOOLS.com.

ADDITIONAL LIMITATIONS

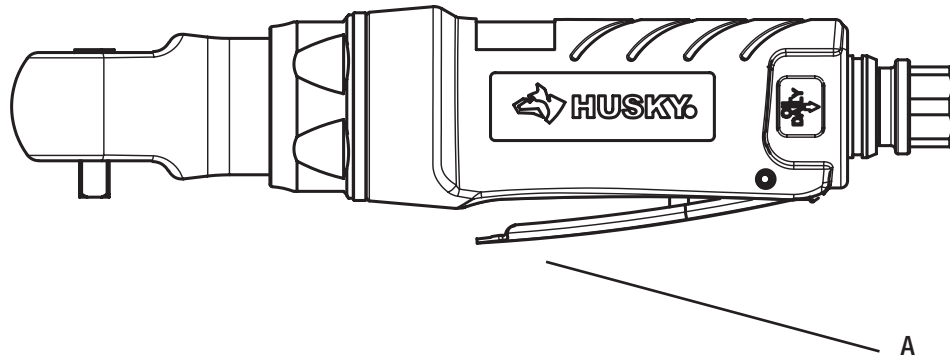
To the extent permitted by applicable law, all implied warranties, including warranties of merchantability or fitness for a particular purpose, are disclaimed. Any implied warranties, including warranties of merchantability or fitness for a particular purpose, that cannot be disclaimed under state law are limited to two years from the date of purchase. Husky is not responsible for direct, indirect, incidental, special or consequential damages. If this air compressor is used for commercial purposes, the warranty will apply for ninety (90) days from the date of purchase. Some states do not allow limitations on how long an implied warranty lasts and/or do not allow the exclusion or limitation of incidental or consequential damages, so the above limitations may not apply to you. This warranty gives you specific legal rights, and you may also have other rights, which vary from state to state.

Pre-Installation

SPECIFICATIONS

Free Speed (RPM)	Maximum Torque	Weight (lbs)	Length (in)	Air Cons. (SCFM)	Maximum Operating Pressure (PSI)
200	30 ft-lb	1.43	7.84	4	90

PACKAGE CONTENTS



Part	Description	Quantity
A	1/4" Ratchet Wrench	1

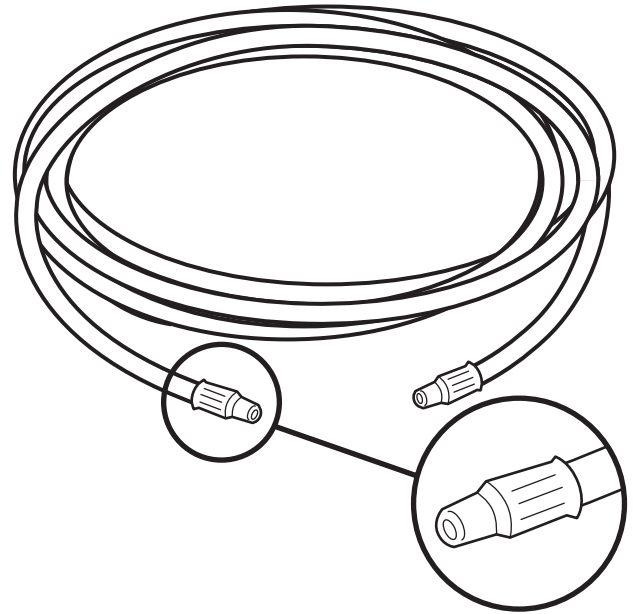
Installation

1 Cleaning the air hose

- A 3/8" air hose is required, with a maximum length of 25 ft.
- Clean the air hose of accumulated dust and moisture before connecting it to the air supply.



NOTE: If a longer air hose is required, connect a 1/2" air hose to the 3/8" air hose to ensure the ratchet wrench has the necessary air supply.

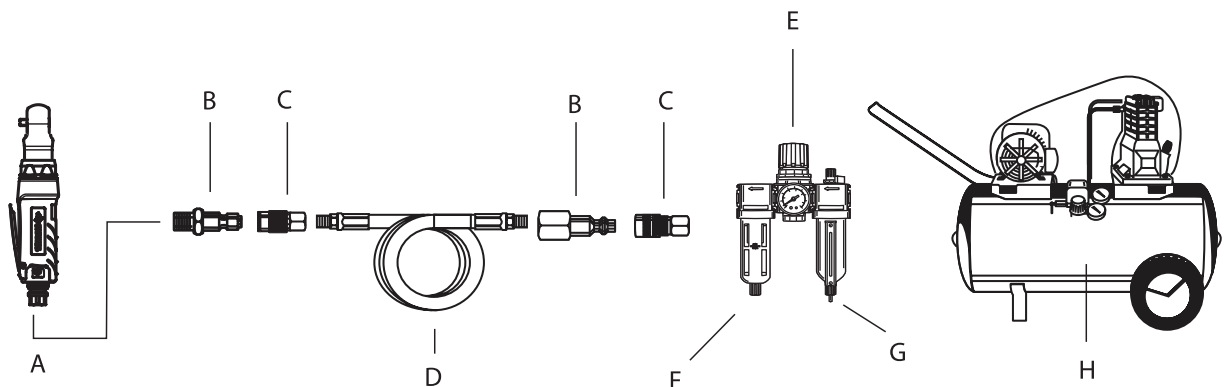


2 Connecting to the air supply

- Always use clean dry air. Excessive moisture and dirt will greatly reduce the life of any air motor. We recommend the installation of an in-line filter-regulator-lubricator as close to the tool as possible.
- Ensure all hoses and fittings are the correct size and secured tightly.

Recommended Air Line Set-Up

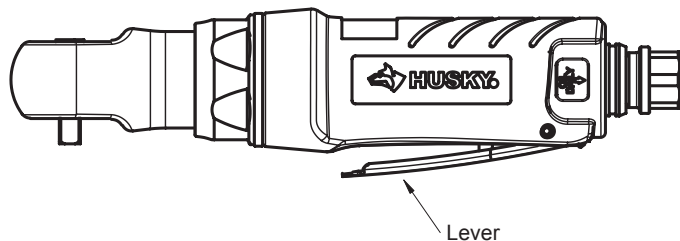
Part	Description
A	1/4" Ratchet Wrench
B	Quick Plug
C	Quick Coupler
D	Air Hose
E	In-line Regulator
F	In-line Lubricator
G	In-line Filter
H	Air Compressor



Operation

1 Operating the ratchet wrench

- This 1/4" Ratchet Wrench is designed to operate on 90 PSIG. Lower pressure (below 90 PSIG) will reduce performance of the tool. Higher air pressure (over 90 PSIG) raises the performance of the tool beyond its rated capacity and could cause serious damage to the tool and the user.

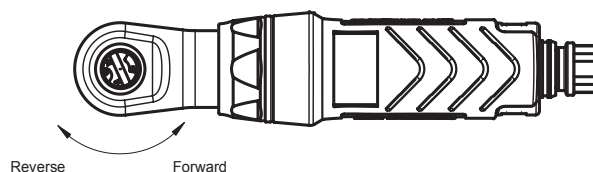


2 Changing the direction of the tool



WARNING: Disconnect the tool from the air supply before servicing or changing accessories.

- The direction of the tool is reversible.
- Control the rotation direction by turning the reverse button above the ratchet head to R (Reverse) or F (Forward).



3 Installing and removing the sockets



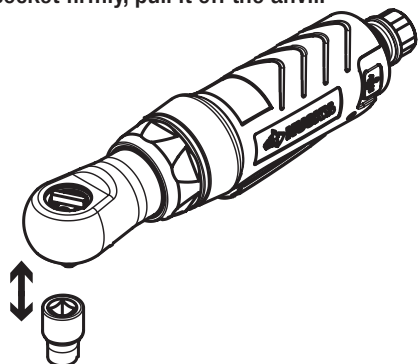
WARNING: Disconnect the tool from the air supply before servicing or changing accessories.

To install sockets:

- Remove the air supply from the ratchet wrench.
- Fit the 1/4" square drive socket onto the anvil, pushing on the socket.

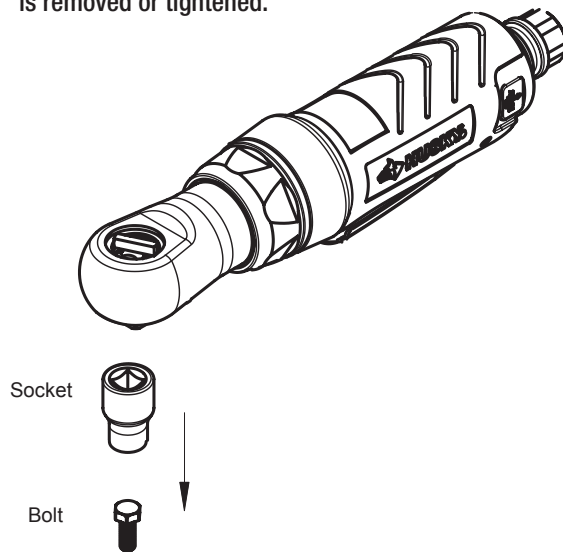
To remove sockets:

- Remove the air supply from the ratchet wrench.
- Holding the socket firmly, pull it off the anvil.



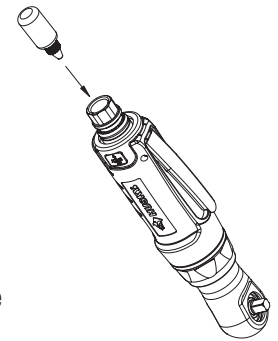
4 Driving the nuts and bolts

- Place the reverse button located above the head of the ratchet wrench to the correct direction, F (Forward) or R (Reverse). Fit the correct size socket to the anvil of the ratchet wrench.
- Hold the ratchet wrench with one hand and place the socket onto the nut/bolt to be tightened or removed. Press the throttle lever and stop the operation once the nut/bolt is removed or tightened.



Maintenance

Ensure the air line is shut-off and drained of air before removing this tool for service. This will prevent the tool from operating if the throttle is accidentally engaged.



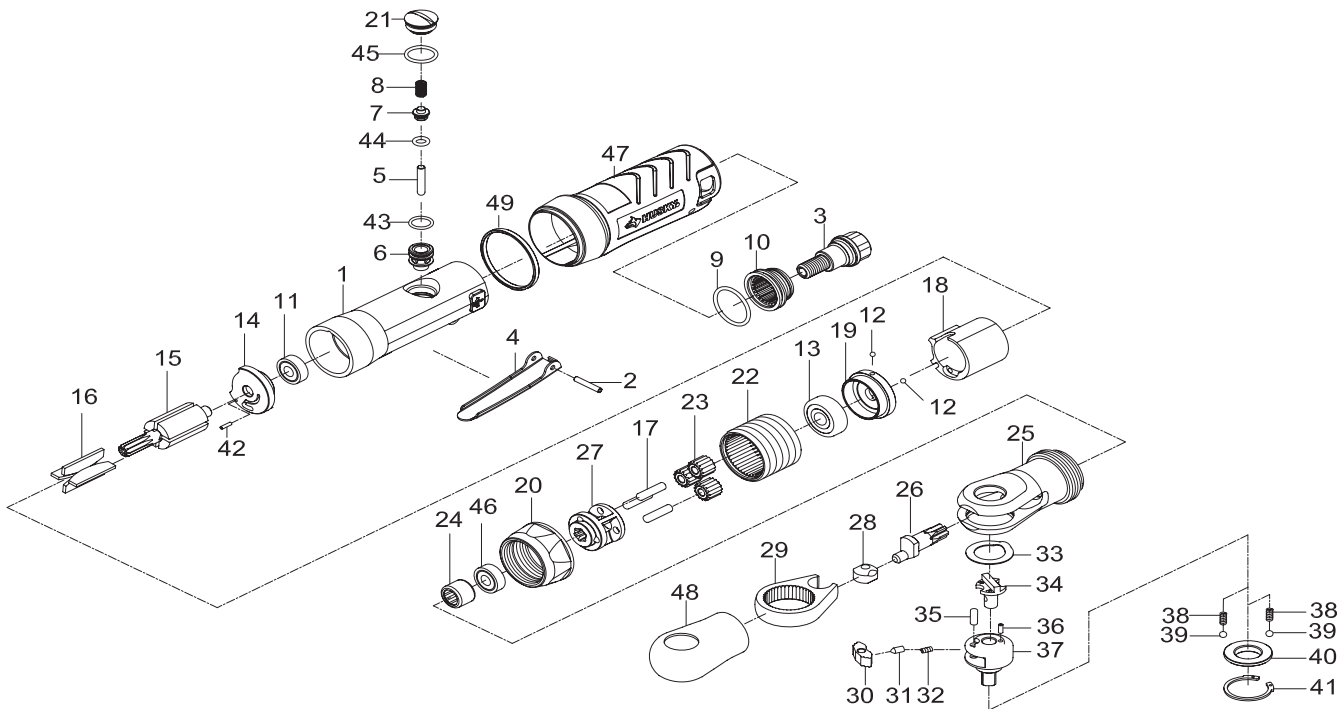
LUBRICATION

- An in-line filter-regulator-lubricator is recommended as it increases tool life and keeps the tool in sustained operation.
- Regularly check and fill the in-line lubricator with air tool oil. Avoid using excessive amounts of oil.
- Adjust the in-line lubricator by placing a sheet of paper next to the tool's exhaust ports and holding the throttle open approximately 30 seconds. The lubricator is properly set when a light stain of oil collects on the paper.
- If it is necessary to store the tool for an extended period of time (overnight, weekend, etc.), generously lubricate the tool through the air inlet. Run the tool for approximately 30 seconds to ensure the oil is evenly distributed throughout the tool. Store the tool in a clean and dry environment.
- Recommended lubricants: Air tool oil or any other high grade turbine oil containing moisture absorbent, rust inhibitors, metal wetting agents, and an EP (extreme pressure) additive.

Troubleshooting

Problem	Possible Cause	Solution
The tool runs slowly or will not operate.	There is grit or gum in the tool.	Flush the tool with air tool oil or gum solvent.
	The tool is out of oil.	Lubricate the tool according to the lubrication instructions in this manual.
	The air pressure is low.	<ul style="list-style-type: none"> □ Adjust the regulator on the tool to the maximum setting. □ Adjust the compressor regulator to the tool's maximum setting of 90 psi.
	The air hose leaks.	Tighten and seal the hose fittings with pipe thread tape if leaks are found.
	The air pressure drops.	<ul style="list-style-type: none"> □ Ensure the hose is the proper size. Long hoses or tools using large volumes of air may require a hose with an I.D. of ½" or larger depending on the total length of the hose. □ Do not use a multiple number of hoses connected together with a quick connect fitting. This causes additional pressure drops and reduces the tool power. Directly connect the hoses together.
	There is a worn rotor blade in the motor.	Replace the rotor blade.
	There is a worn ball bearing in the motor.	Remove and inspect the bearing for rust, dirt, and grit. Replace or clean and grease the bearing with bearing grease.
There is moisture blowing out of the tool's exhaust.	There is water in the tank.	Drain the tank. (See the air compressor manual for instructions.) Lubricate the tool and run it until water is not evident. Lubricate the tool again and run for 1-2 seconds.

Service Parts



Ref #	Part Number	Description	Qty
1	932-312401	Housing	1
2	940337	Spring Pin	1
3	933-312303	Air Inlet	1
4	932-301404	Throttle Lever	1
5	932-301405	Valve Pin	1
6	932-312406	Valve	1
7	932-301407	Throttle Valve	1
8	940142	Spring	1
9	952235	O-Ring	1
10	952206	Deflector	1
11	9052213	Ball Bearing	1
12	952245	Steel Ball	2
13	90627ZZ	Ball Bearing	1
14	952214	Rear End Plate	1
15	932-301215	Rotor	1
16	932-301216	Vane	4
17	9610225	Idler Gear Pin	3
18	932-301218	Cylinder	1
19	932-301219	Front End Plate	1
20	932-301424	Nut	1
21	933-312310	Valve Plug	1
22	932-301222	Thread Ring Gear	1

Ref #	Part Number	Description	Qty.
26	932-301230	Crank Shaft	1
27	932-301226	Idler Gear Plate	1
28	932-301231	Drive Bushing	1
29	932-301232	Yoke	1
30	932-301237	Ratchet Pawl	1
31	932-301235	Spring Cap	1
32	932-301239	Spring	1
33	932-301242	Washer	1
34	932-301233	Reverse Buton	1
35	9PN03030808	Pin	1
36	970117	Spring Pin	1
37	932-301238	Ratchet Anvil 1/4"	1
38	932-301234	Spring	2
39	932-301240	Steel Ball	2
40	932-301241	Thrust Washer	1
41	9IRTW22	Retainer Ring	1
42	930117	Spring Pin	1
43	90R01000105	O-Ring	1
44	930107	O-Ring	1
45	9706109	O-Ring	1
46	90689ZZ	Ball Bearing	1
47	933-312452	Rubber Grip (Husky)	1



Questions, problems, missing parts? Before returning to the store,
call Husky Customer Service
8 a.m.-6 p.m., EST, Monday-Friday

1-888-43-HUSKY

HUSKYTOOLS.COM

Retain this manual for future use.