

Installation Instructions

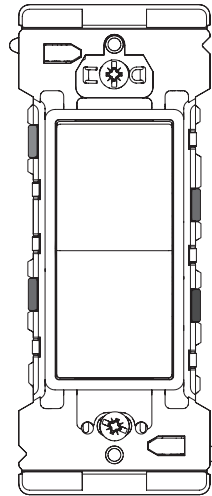
3-Way (Multi-location)
SWITCH
15A-120/277V AC/CA

DI-000-E5603-02B

Cat. No. E5603



SAFER, FASTER, and EASIER



Leviton's Decora Edge Switch makes it safer, faster, and easier to install a new switch.

Colored levers easily identify where to connect each wire.

There are no exposed wires or metal parts after installation.

Built-in strip gauge.

An extra large plastic strap facilitates installation in large wall openings.

Designed for midway wallplates for extra coverage, or you can easily convert it to use with standard wallplates by removing the break-off tabs.

Built-in alignment feature to align other Decora Edge products in a multi-gang installation. (See page 11.)

1



Features

Terminates wire with a snap

The colored levers snap shut to terminate the wires.

Alignment Tab and Notch
Aligns devices for multi-gang installations.

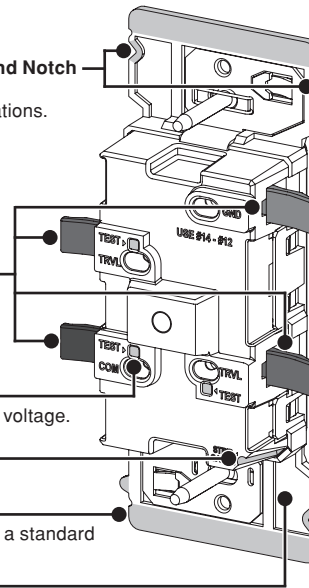
Levers

Test Portals
Use to test device voltage.

Strip Gauge

Break-off Fins
Break off to install a standard size wallplate.

Strap

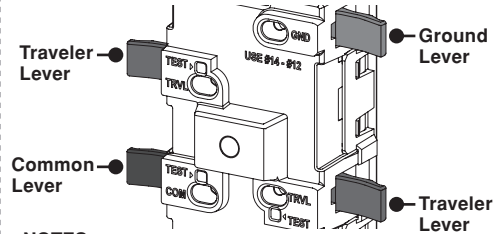


2



Lever Wiring Feature

The color-coded levers easily identify where to connect the wallbox wires to the switch.



NOTES:

- Wire colors in your wallbox may be different from the lever colors. See "Preparing Wires," on page 5 to make sure you insert the wires properly.
- Both Traveler 1 or 2 can be connected to either Traveler lever.



Recommended Tools

Slotted/Phillips Screwdriver

Wire Stripper

Needle Nose Pliers

Voltage Tester

3

If you need help...

ONLINE
www.leviton.com/support

CHAT
www.leviton.com/contact

CALL
1-800-824-3005 (USA)
1-800-405-5320 (Canada)



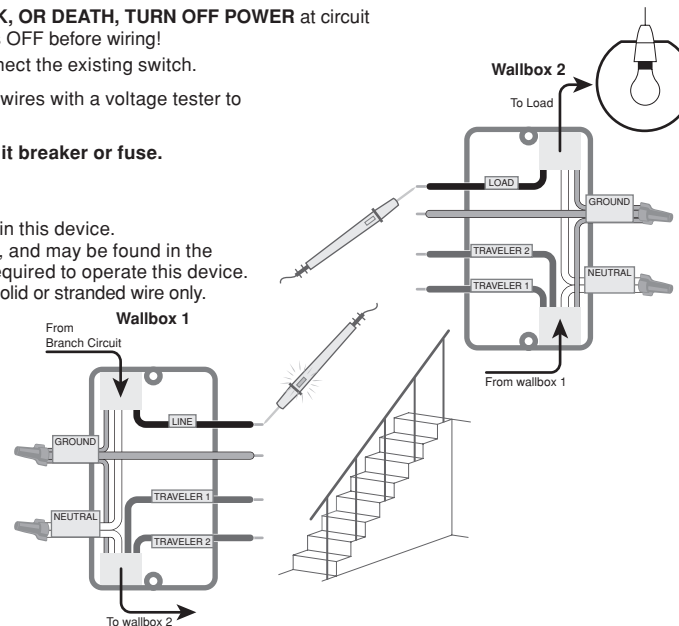
Identify Your Wires

WARNING: TO AVOID FIRE, SHOCK, OR DEATH, TURN OFF POWER at circuit breaker or fuse and test that power is OFF before wiring!

- Remove the wallplate and disconnect the existing switch.
- Restore power. Carefully, test the wires with a voltage tester to find the Line (hot) wire.
- Turn OFF the power at the circuit breaker or fuse.
- Label the wires, as shown.

NOTES:

- DO NOT** use copper-clad wires in this device.
- Neutral wires are typically white, and may be found in the wallbox. Neutral wires are not required to operate this device.
- Use with #12 AWG or #14 AWG solid or stranded wire only.
- Ground wires may be green.



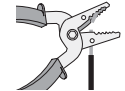
If your wallbox looks different, contact an electrician.

4



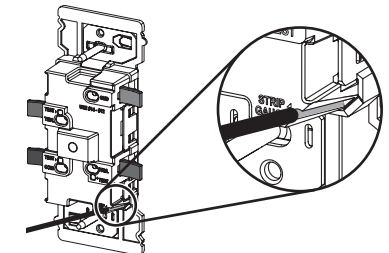
Preparing Wires

- Make sure that the ends of the wires from the wallbox are straight (**cut if necessary**).



- Strip each wire in the wallbox, as shown below.

Use Built-in Strip Gauge on the Switch



OR
Use Strip Gauge as shown below
(measure bare wire here)



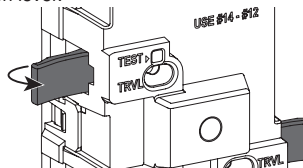
9/16 in.
(1.4 cm)

5

3-Way Wiring

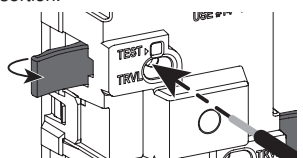
NOTE: Work on only one connection at a time.

1. Fully open lever.

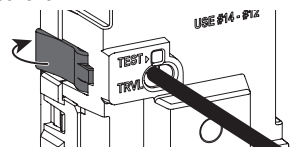


2. Insert the proper wire into the wire hole per the wiring diagram on page 7. Make sure the wire is fully inserted and no bare wire is exposed.

NOTE: If using stranded wire twist wire before insertion.



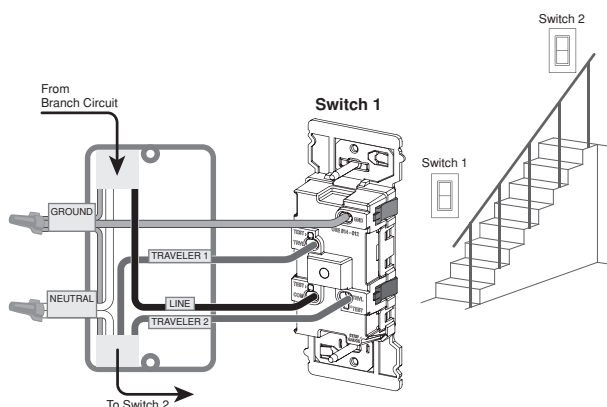
3. Fully close lever.



6

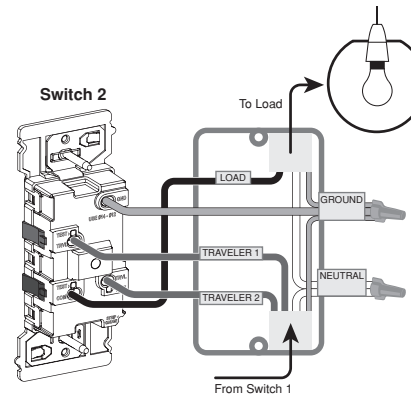
3-Way Wiring (continued)

4. Connect the remaining wires as shown.



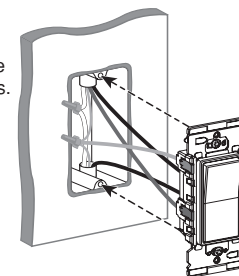
If you are unsure about these instructions, contact an electrician.

7

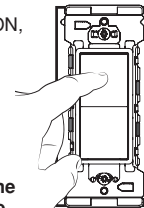


Test

1. Position all wires so that there is room in the wallbox for the device.
2. Partially screw the mounting screws into the wallbox's mounting holes.



3. Restore power at the circuit breaker or fuse.
4. Press the switch. If the Load turns ON, wiring is complete.



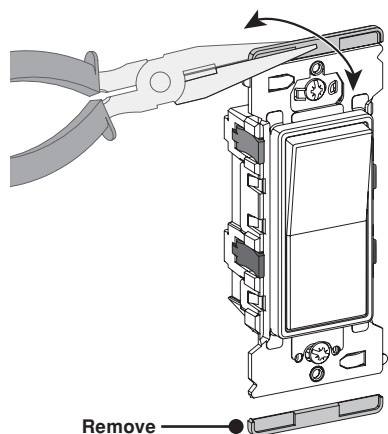
WARNING: Turn the power OFF at the breaker or fuse before you complete the installation.

5. To complete the installation, proceed to the next page.
- If you are unsure about the installation process, contact Leviton Technical Support, or contact an electrician.

8

Wallplate Installation Preparation

The switch strap is designed for midway wallplates. If you want to use a standard size wallplate, carefully remove both break-off fins, as shown below.

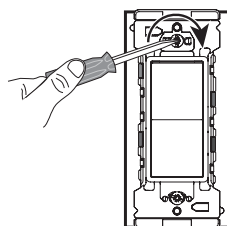


9

Single-Gang Box Installation

WARNING: Turn the power OFF at the circuit breaker or fuse before you tighten the screws.

1. Tighten the mounting screws into wallbox.



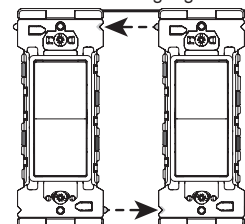
2. Install wallplate, and restore power.

10

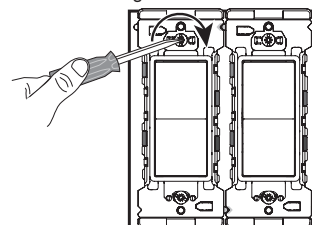
Multi-Gang Box Installation

WARNING: Turn the power OFF at the circuit breaker or fuse before you tighten the screws.

1. To install the switch next to other Decora Edge devices, use the alignment feature to easily place each device next to each other in the multi-gang box.



2. Tighten the mounting screws into wallbox.



3. Install wallplate, and restore power.

11

Safety First

WARNINGS:

- TO AVOID FIRE SHOCK OR DEATH, TURN OFF POWER at circuit breaker or fuse when servicing, installing or removing device.
- This product is to be installed and/or used in accordance with electrical codes and regulations.
- If you are unsure about any part of these instructions, consult an electrician.

CAUTIONS:

- Use this device with solid or stranded copper wire only.
- DO NOT use this device with copper clad wire.
- To avoid damage to the product, DO NOT use disinfecting products, including foggers, sprays or other types of atomized cleaning agents.
- DO NOT spray liquid onto the product.
- To clean, use a damp cloth with mild soap.

PATENT STATEMENT
Patents covering this product, if any, can be found on leviton.com/patents.

Limited 2 Year Warranty & Exclusions

For Leviton's limited product warranty, go to www.leviton.com. For a printed copy of the warranty, call 1-800-824-3005.

FOR CANADA ONLY
For warranty information and/or product returns, residents of Canada should contact Leviton in writing at Leviton Manufacturing of Canada ULC to the attention of the Quality Assurance Department, 165 Hymus Blvd, Pointe-Claire (Quebec), Canada H9R 1E9 or by telephone at 1 800 405-5320.

Scan this QR code for additional Decora Edge product information and to view the install video.



Visit leviton.com/support or contact Technical Services at 1-800-824-3005 for additional help.

ARTWORK PRINT SPECIFICATIONS

LEVITON®

PART NUMBER DI-000-E5603-02B **REV** **DESCRIPTION** Instruction Sheet

* Artwork must be printed at 100% (1:1 scale)

Material Specifications: North America Suppliers

- * Thickness: 0.0040/0.0038 in.
- * Material: 20lb Bond / 50lb Offset Paper
- * Recycled Content: N/A
- * Exterior Brightness: 95/ 89-92
- * Finish: N/A/ Smooth or Vellum

Material Specifications: Asia Suppliers

- * Thickness: 0.003/ 0.0027 in.
- * Material: 55G / 60G Offset Paper
- * Recycled Content: N/A
- * Exterior Brightness: 90
- * Finish: N/A

* For manuals - designates cover specifications

Color:

No. of Color(s): 1 over 1

- 1: Black ☒ Spot
- 2: ☐ CMYK
- 3:
- 4:

Fonts:

- 1: Helvetica
- 2:
- 3:
- 4:

Die Line Key:

- . . . — Perforate — Die Cut - - - - Fold Line
- — — — Kiss Cut · · · · · Cellophane ≡≡≡≡ Glue

MANUAL INTERIORS / BINDERY / FOLD SCHEME :

Body Material:

Thickness:

Bindery

- ☐ Die cut ☒ Fold ☐ Saddle Stitch
- ☐ Perfect Bind ☐ Drill ☐ Trim

No. of Color(s): over

- 1: ☐ Spot
- 2: ☐ CMYK
- 3:
- 4:

Fonts:

- 1:
- 2:
- 3:
- 4:

PROCESS :

- ☒ Offset ☐ Flexo

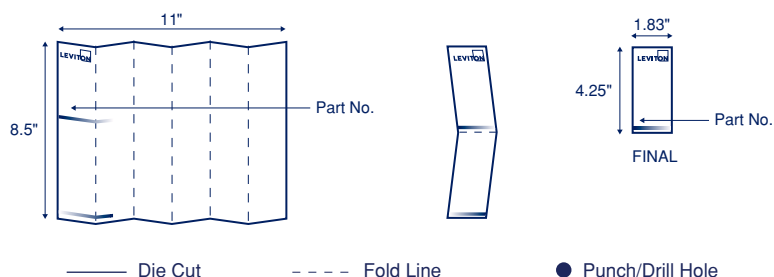
☐ Other

Line Screen:

Angle:

Resolution:

DIMENSIONS / FOLD SCHEME / BINDERY DIAGRAM



COMMENTS :

The information in this document is the exclusive PROPRIETARY property of LEVITON MANUFACTURING COMPANY, INC. It is disclosed with the understanding that acceptance or review by the recipient constitutes an undertaking by the recipient. (1) to hold this information in strict confidence, and (2) not to disclose, duplicate, copy, modify or use the information for any purpose other than that for which disclosed.

FOR LEVITON USE ONLY

- Approvals: ☒ Plant 08 H. Cai ☒ QA S. Barbour ☒ PM B. Randall
- ☐ Mktg ☒ Eng M. Kamor ☒ S & A B. Grande
- ☒ Other L. Audrain ☒ Other C. Buttitta ☒ Other V. LoNigro
- ☒ cc: J. Tang ☒ cc: R. Jansen ☒ cc: J. Lowe

PN-ARN: ECR26903-7432

ECR Number:

Pilot Rev:

Artist: Z. Reisman

Released Artwork Format: Production PDF

Artwork Release Date: 3/10/23

Notes:

- ☐ Vector Photo ☐ Color Corrected Photo