



MI ALMA
-Tile Your Story-

INSTALLATION GUIDE

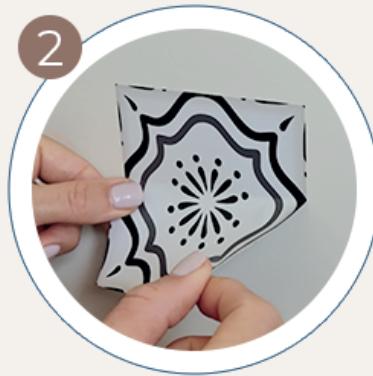
1. Before you begin the installation, please ensure the application surface is clean. Once cleaned, please wait 5 minutes until fully dry.
2. Position the tile in the place you'd like it. Peel the paper behind the tile sticker and apply the sticker onto the desired surface.
3. Gently go over the sticker with a smooth cloth to remove any air bubbles.

Easy Installation



Position the Tile- Peel the Paper Behind

Before you begin ensure the surface is clean by using a damp cloth or sponge to scrub the surface. Once cleaned, wait 5 minutes until fully dry and make sure there is no residue.



Apply sticker onto desired surface

Position the tile in the place you'd like it. Peel the paper behind the tile sticker and apply sticker onto desired surface.



Gently go over the sticker

Gently go over the sticker to remove any air bubbles. Easy installation :) Voila ,You're done!