



With your inspiring rating, COSTWAY will be more consistent to offer you EASY SHOPPING EXPERIENCE, GOOD PRODUCTS and EFFICIENT SERVICE!

Mit Ihrer inspirierenden Bewertung wird COSTWAY konsistenter sein, um Ihnen EIN SCHÖNES EINKAUFSERLEBNIS, GUTE PRODUKTE und EFFIZIENTEN SERVICE zu bieten!

Avec votre évaluation inspirante, COSTWAY continuera à fournir une EXPÉRIENCE D'ACHAT PRATIQUE, des PRODUITS DE QUALITÉ et un SERVICE EFFICACE !

Con su calificación inspiradora, COSTWAY será más consistente para ofrecerle EXPERIENCIA DE COMPRA FÁCIL, BUENOS PRODUCTOS y SERVICIO EFICIENTE.

Con la tua valutazione incoraggiante, COSTWAY sarà più coerente per offrirti ESPERIENZA DI ACQUISTO FACILE, BUONI PRODOTTI e SERVIZIO EFFICIENTE!

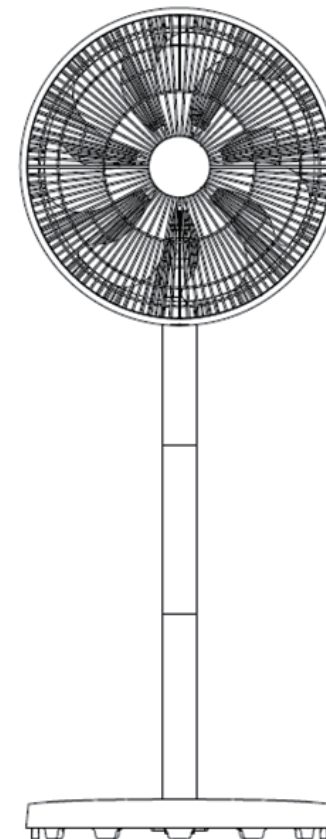
Dzięki twojej opinii COSTWAY będzie mógł oferować jeszcze WYGODNIEJSZE ZAKUPY, LEPSZE PRODUKTY i SPRAWNIEJSZĄ OBSŁUGĘ KLIENTA.

US office: Fontana

UK office: Ipswich

DE office: FDS GmbH, Neuer Höltingbaum 36, 22143 Hamburg, Deutschland

FR office : 26 RUE DU VERTUQUET, 59960 NEUVILLE EN FERRAIN, FRANCE



USER'S MANUAL

**PEDESTAL FAN
ES10006US-WH**



Important Safe Guards

When using an electrical appliance, basic safety precautions must always be observed, including the following:

Read all Instructions before Using

Warning: To reduce the risk of fire, electric shock, and injury to person, the following must be adhered to:

1. This appliance can be used by children aged from 8 years and above and persons with reduced physical, sensory or mental capabilities or lack of experience and knowledge if they have been given supervision or instruction concerning use of the appliance in a safe way and understand the hazards involved.
2. Children shall not play with the appliance, cleaning and user maintenance shall not be made by children without supervision.
3. The product is for household use only.
4. Connect the appliance to a single-phase AC supply voltage, specified on the rating plate.
5. Never leave the fan unattended while it is in use. Always turn the fan to the "OFF" position, and unplug the fan from the power outlet when not in use.
6. Extreme caution is necessary when any fan is used by or near children, elderly persons, and whenever the fan is left operating unattended.
7. The fan cord must not be placed under carpets, or covered with throw rugs, runners or similar. Arrange the cord away from the traffic area, and where it will not be tripped over.
8. Do not operate the fan with a damaged cord or plug, or after the fan malfunctions, or has been dropped, or damaged in any manner.
9. If the supply cord is damaged, either the manufacturer, or the authorized service agent, or a similarly qualified person, must replace it, to avoid a hazard.
10. Use the fan in a well ventilated area. While in use, ensure that the inlet or exhaust openings are not blocked unexpectedly, and the fan distance from the wall or corner must be no less than 20cm (7.8"). The fan should not be placed below or besides any curtains or similar.

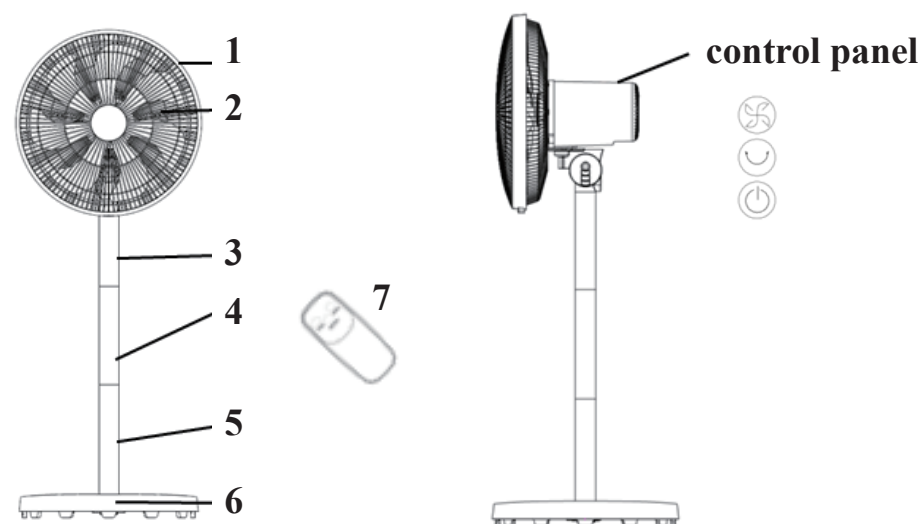
11. To avoid mechanical danger when in use, do not insert, or allow fingers, or any other objects into the grill. Do not block the air-inlet or the exhaust openings in any manner.
12. The fan must only be placed, and used on a flat dry floor.

For household use only and save these instructions

Specifications

Voltage: 120 V / 60 Hz Power: 60 W

Structure and Parts



1. Net cover
2. Blade
3. Upper plastic tube
4. Middle plastic tube
5. Lower plastic tube
6. Base
7. Remote control (Need to install 2 x AAA battery)

Assembly Instructions

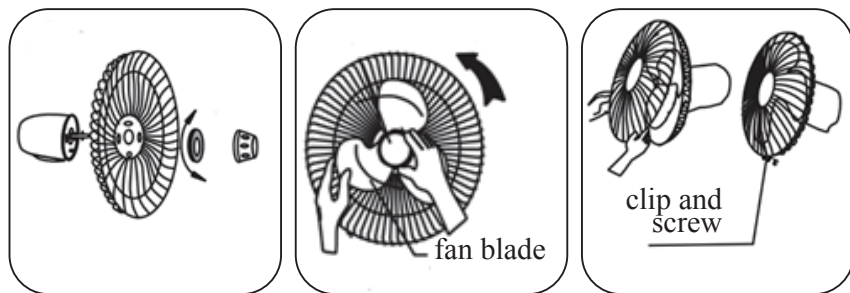
The fan is packaged with its grills unattached. You must attach the grills before operating the fan.

Warning: Never operate the fan without its foundation and other parts. The fan must only operate in the upright position, and any other position will be hazardous.

Do operate the fan only in upright position; any other position could create a hazardous situation.


Assemble the foundation and other parts of the appliance in the following sequence:


- Unpack the fan and remove all parts from the package
- Adjust the fan head to up or down position, and then tighten the fasten screw.
- Use the fasten nut for the back grill to attach the back grill to the fan head, and then use the fasten nut for the fan blade to hold the fan blade in place.
- To attach the front grill to the back grill, you must use the grill ring carefully to hold them together, and fasten the grill ring with the screw provided.



Operating Instructions

- Before using the fan, make sure that it is on a flat and stable surface. Damage may occur if the fan is placed on an incline or decline.
- Set all the switches to the "OFF" position, and then insert the plug directly into a standard AC socket-outlet. Be sure that the plug fits tightly into the socket-outlet.

3. Press "ON/OFF" on the remote control or press  on control panel to start the fan. Press "SPEED" to select the fan speed level: I (Low), II (Med), III (High).

4. If you want to increase the blowing coverage area in your room, press "SWING" on the remote control or , press  on control panel and the fan will oscillate and cover a wide area of the room. To stop oscillating, just press it again. Moving the fan head either up or down will change the direction of the wind.

Cleaning / Maintenance Instructions

To safely take care of your fan, please remember to follow these instructions below:

- Always remove the plug from the socket-outlet, and allow the fan to stop completely before cleaning the fan.
- Do not allow water to drip on, or enter into the fan housing.
- Always use a soft cloth dampened with a mild soap solution.
- Do not use any of the following agents as a cleaner: Gasoline, Thinners, or Benzene.
- In case of malfunction or doubt, do not try to repair the fan yourself, it may result in a fire hazard or electric shock.

FAN Cleaning

Clean the fan grill, housing and base with a soft damp cloth. Do not attempt to remove the fan blades. Please use caution around the motor housing area. Do not allow the motor, or other electrical components to be immersed in water.

FAN Storage

When storing your fan in the off-season, be sure to store it in a safe and dry location. It is important to protect the fan head from any dust. We strongly recommend using the original box when storing the fan away.