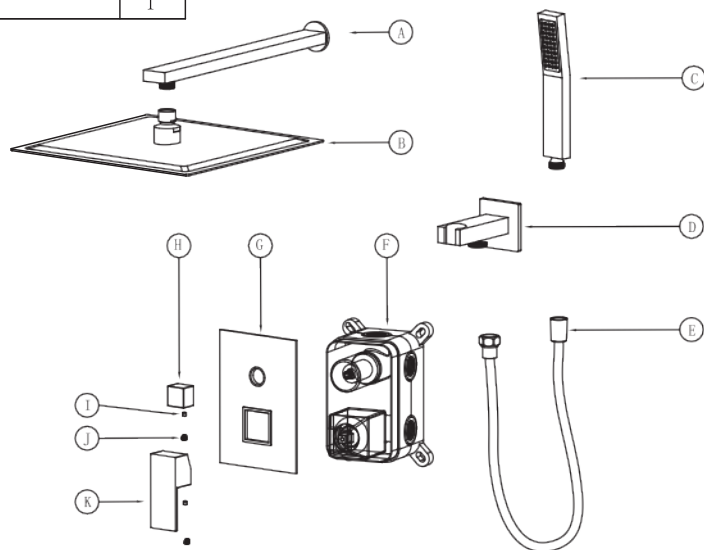
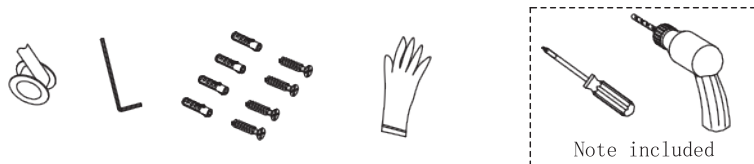


	Name	Qut.
A	Shower arm	1
B	Rain shower	1
C	Hand shower	1
D	Shower holder	1
E	Shower hose	1
F	Body of mixer	1
G	Panel	1
H	Handwheel	1
I	Hexagon socket screw	2
J	Decorative button	2
K	Handle	1



Made in china

### Installation tools and accessories



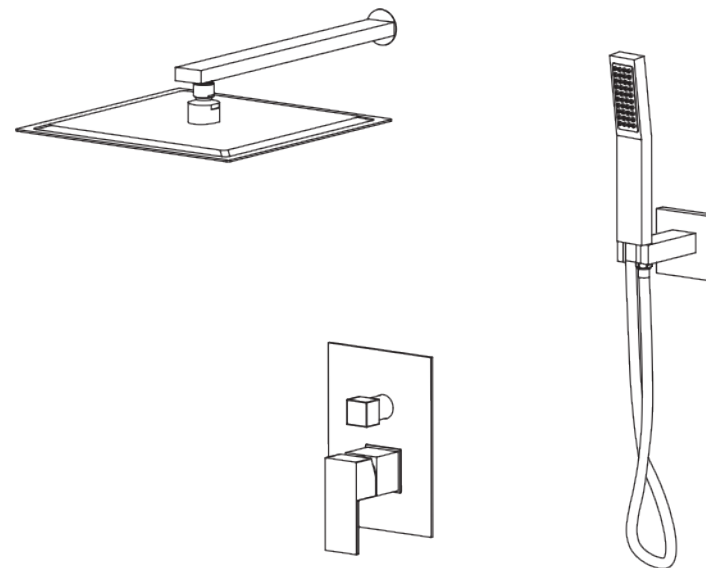
#### Caution:

Open the package, please check whether the product is consistent with the main body and accessories you purchased. If there are any differences, please contact customer service.

#### Note:

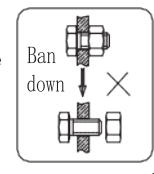
1. Without affecting the use, spare parts are subject to change without notice;
2. The appearance of the product should be subject to the actual product.

## Mounted Shower System Product Instruction

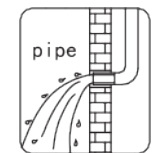


Caution: Installation requires professionals

This product has been inspected and debugged at the factory and is in the best condition, please do not disassemble it yourself.



Please flush the water pipe before installing the faucet to avoid blocking the faucet and affecting the use.



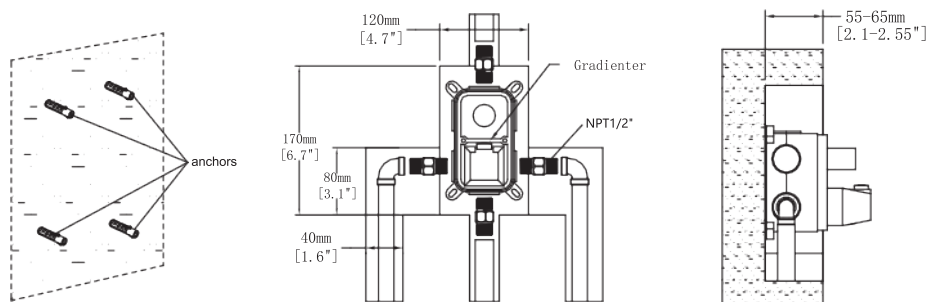
### Clean & Maintain

In order to maintain the appearance of the tap bright and clean and good performance, please care according to the following methods.

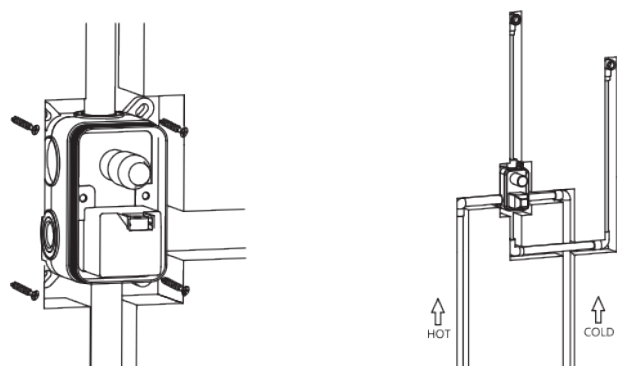
1. Wash with water and dry with soft cotton cloth;
2. Use mild liquid and colorless glass cleaner to remove surface dirt;
3. Do not use abrasives, emery cloth, paper or knives, etc;
4. Do not use acid cleaners, granular cleaners, soaps, etc.



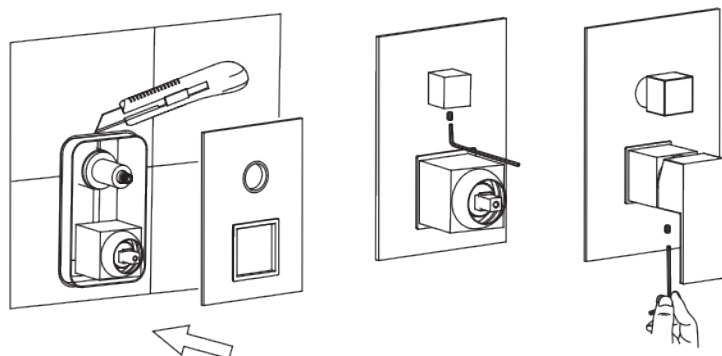
### 1. Install the anchor and then install the shower mixer



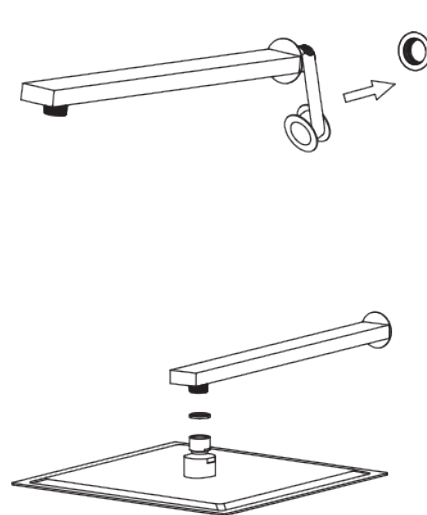
### 2. Install the inlet and outlet pipe



### 3. Stick the tiles and cut off the edge of the installed box, Remove the protective cover and install the panel



### 4. Install shower arm and shower head



### 5. Mounting bracket and hand shower

