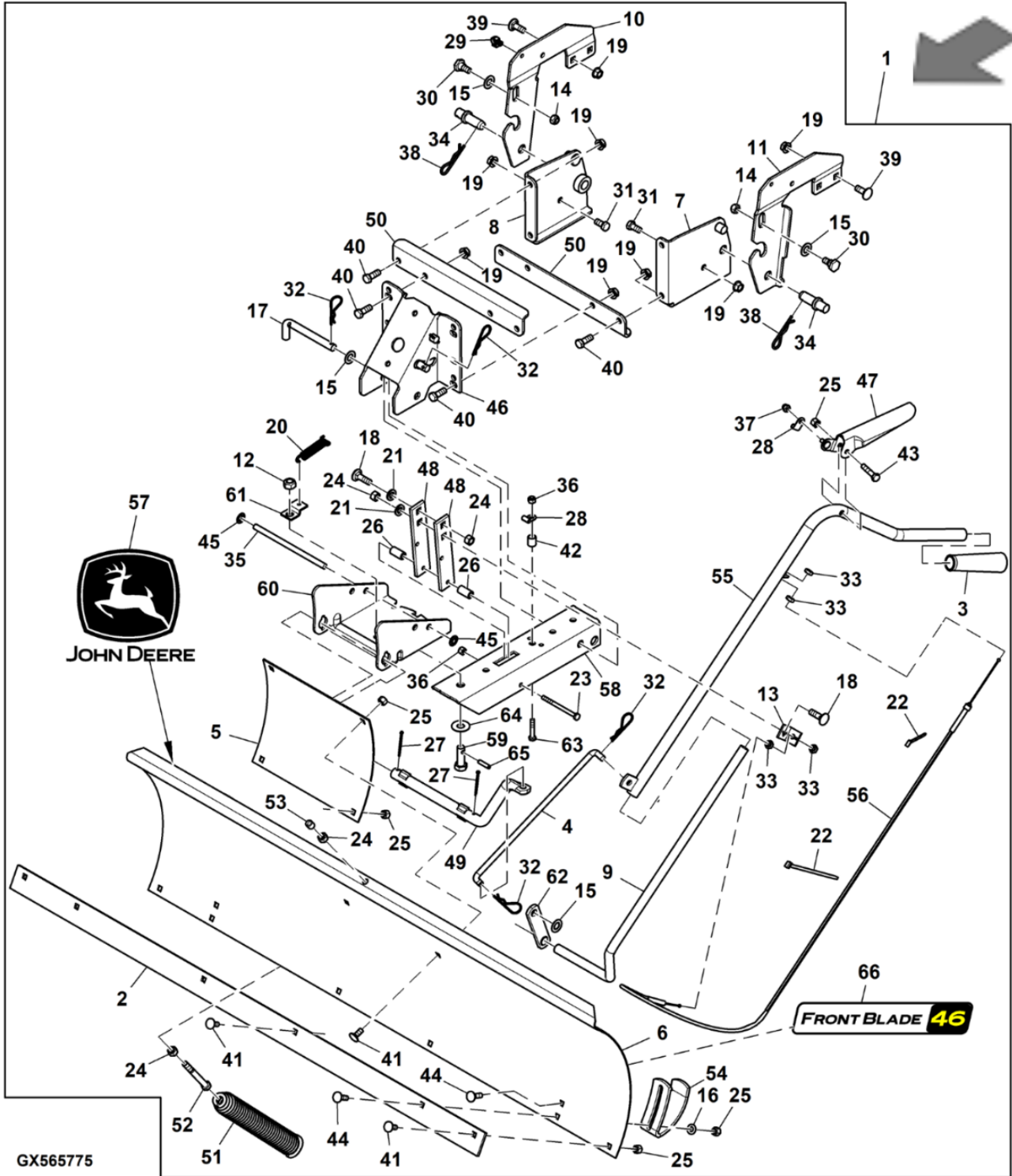


TRACTOR, LAWN AND GARDEN

PC13992

Snow Blade, 46 inch, Attachment - ST1019170



TRACTOR, LAWN AND GARDEN

PC13992

Snow Blade, 46 inch, Attachment - ST1019170

KEY	PART NO.	PART NAME	QTY	REMARKS
1	BUC11657	Front Blade	1	SUB FOR BG20943
2	GXH24524	Wear Blade	1	
3	GXH46471	Grip	1	
4	GXH48167	Rod	1	
5	GXH62980	Plate	1	
6	GXH63821Y	Blade	1	Yellow USE WITH BG20943
6	AUC20740	Blade	1	Green USE WITH BUC11657
7	GXH64187	Plate	1	Hitch, LH
8	GXH64188	Plate	1	Hitch, RH
9	GXH64227	Lift Arm	1	
10	GX26420	Mounting Bracket Plate	1	RH
11	GX26421	Plate	1	LH
12	K40014	Hexagonal Prevailing Torque Nut, M13	1	
13	GXH24780	Bracket	1	Cable Mount
14	E50102	Hexagonal Prevailing Torque Nut, M10	2	
15	24H1341	Steel Round Hole Metallic Washer, 13 X 24 X 2 mm	4	17/32" X 15/16" X 0.060"
16	24H1136	Steel Washer, 9 X 17 X 2 mm	4	11/32" X 11/16" X 0.065"

KEY	PART NO.	PART NAME	QTY	REMARKS
17	GXH46065	Pin Fastener	1	
18	03H1480	Round Head Square Neck Bolt, M10 X 32	2	3/8" X 1-1/4"
19	E59406	Hexagonal Flange Prevailing Torque Nut, M10	14	
20	GXH43348	Spring	1	
21	12H293	Helical Spring Lock Steel Washer, 11 X 20 X 3 mm	2	7/16"
22	R44302	Nylon Tie Band Clamp	2	
22	A-14B505	TIE BAND	2	
23	19H3171	Cap Screw	1	1/4" X 3-1/4"
24	14H1076	Hexagonal Nut, M10	2	3/8"
25	T16464	Hexagonal Prevailing Torque Nut, M8	11	
26	28H2546	Bushing	2	0.302" X 0.540" X 1"
27	11M7092	Steel Cotter Pin	2	3.200 X 40 mm
28	GXH48084	Bolt-On Single Steel Clamp	2	
29	GX22054	Open or Closed Snap-In Plastic Clamp and Clip	1	
30	GXH48106	Hexagonal Flange Head Shouldered Screw, M10 X 23	2	
31	19H1936	Right Hand Regular Hexagonal Screw, M10 X 19	2	3/8" X 3/4"
32	M40461	Steel Hairpin Spring Locking Pin	4	
33	14H882	Hexagonal Nut, M8	4	5/16"
34	GXH48149	Pin Fastener	2	
35	GXH23856	Rod	1	
36	M40333	Hexagonal Prevailing Torque Nut, M6	2	
37	GXH48236	Hexagonal Crown Nut, M6	1	

KEY	PART NO.	PART NAME	QTY	REMARKS
38	A15147	Steel Hairpin Spring Locking Pin	2	
39	03H1519	Round Head Square Neck Bolt, M10 X 25	4	3/8" X 1"
40	19H2676	Right Hand Regular Hexagonal Screw, M10 X 25	8	3/8" X 1"
41	03H1540	Round Head Square Neck Bolt, M8 X 19	6	5/16" X 3/4"
42	GXH23658	Spacer	1	
43	19H3552	Right Hand Regular Hexagonal Screw, M8 X 38	1	5/16" X 1-1/2"
44	03H1524	Round Head Square Neck Bolt, M8 X 25	4	5/16" X 1"
45	GX20093	Nut	2	
46	GXH25134	Bracket	1	Blade, Pivot
47	GXH62561	Control Lever	1	
48	GXH23151	Bar	2	
49	GXH46066	Shaft	1	Blade, Pivot
50	GXH24778	Bracket	2	Angle Support
51	GXH48090	Spring	1	
52	GXH44071	Bolt	1	
53	GXH44074	Cap	1	
54	GXH24690	Shoe	2	
55	GXH65519	Control Lever	1	
56	GXH49808	Lift Lever Cable	1	Blade Angle
57	JD5823	Label	1	USE WITH BG20943
57	JD5712	Label	1	USE WITH BUC11657
58	GXH24347	Channel	1	

KEY	PART NO.	PART NAME	QTY	REMARKS
59	GXH23131	Bolt	1	
60	GXH23958	Bracket	1	Pivot Lock
61	GXH23130	Bracket	1	
62	GXH63034	Lift Link	1	
63	19H1898	Cap Screw	1	1/4" X 1-1/2"
64	E35778	Washer	1	
65	34H312	Spring Pin	1	1/4" X 1"
66	UC34497	Label	1	USE WITH BUC11657
67	GXH64195	Hardware Kit	1	Not Illustrated INCLUDES GXH24780, GXH46065, GXH43348, 19H3171, GX22054, GXH23856, GXH48236, GXH23658, 19H3552, 19H1898, (2) E50102, (2) 03H1480, (2) 12H293, (2) R44302, (2) 14H1076, (2) 28H2546, (2) 11M7092, (2) GXH48084, (2) GXH48106, (2) 19H1936, (2) GXH48149, (2) M40333, (2) A15147, (2) GX20093, (4) 03H1519, (4) 03H1524, (4) 24H1341, (4) 24H1136, (4) M40461, (4) 14H882, (6) 03H1540, (8) 19H2676, (11) T16464 AND (14) E59406
68	GXH64197	Hardware Kit	1	Not Illustrated INCLUDES GXH62561, GXH23151, GXH46066 AND (2) GXH24778
69	GX26419	Label	1	No-Text, Blade Lift Instructor Not Illustrated