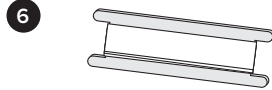
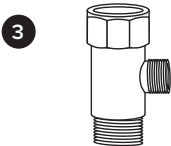
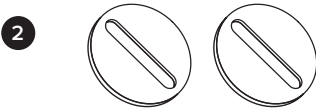
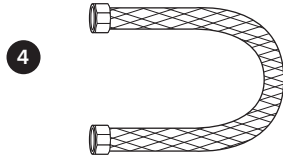
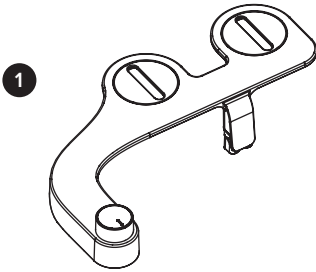


PRODUCT INFORMATION

Product Parts

- 1. Bidet Attachment
- 2. Adjustable Mounting Brackets
- 3. Cold Water T-Valve Connector
($\frac{7}{8}$ " x $\frac{7}{8}$ " x $\frac{3}{8}$ ")
- 4. Cold Water Braided Metal Hose
- 5. Large Rubber Washers (2)
- 6. Teflon Tape



PRODUCT INSTALLATION

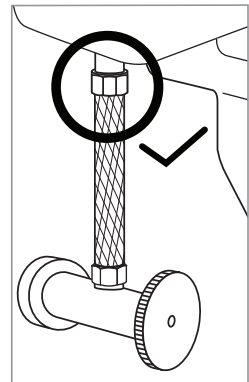
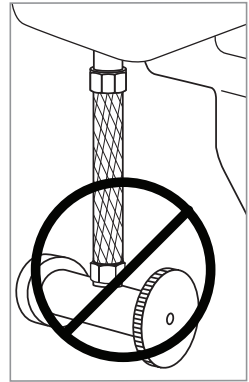
Before Installation

IMPORTANT

Please be advised that the provided cold water T-valve should be installed at the fill valve under the toilet tank, and NOT at the cold water supply coming from the wall.

Check Water Supply Line

Check the water supply line that connects the toilet tank fill valve to the water shutoff valve at the wall. If it is a rigid pipe, you will need to purchase a flexible water supply hose to replace it before installing the FreshSpa Comfort+. The length of the hose may vary and the top connection size should be $\frac{7}{8}$ " ballcock to connect to the T-valve that you will install under the toilet tank and the bottom connection will vary (most common are $\frac{3}{8}$ " and $\frac{1}{2}$ " female compression).



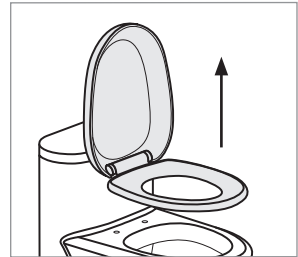
PRODUCT INSTALLATION

Installation

Please read these instructions carefully before installing your FreshSpa Comfort+. Failure to do so could result in flooding, leaking or damage to the product.

1. Existing Toilet Seat Removal

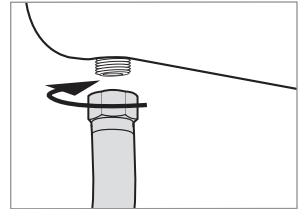
- Lift hinge covers and use flathead or Phillips head screwdriver to remove the mounting bolts. Alternatively, you may need to loosen mounting bolts underneath the seat.
- Remove the toilet seat and set the seat, mounting bolts and hardware aside.



Step 1b

2. Turn Off Water Supply Valve and Flush Toilet

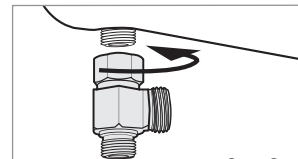
- Turn water supply valve off to stop the flow of water.
- Flush toilet and hold down handle to completely empty tank.
- Disconnect water supply hose from toilet tank. Do not disconnect from the water supply valve.



Step 2c

3. Connect Cold Water T-Valve to the Toilet Tank Fill Valve

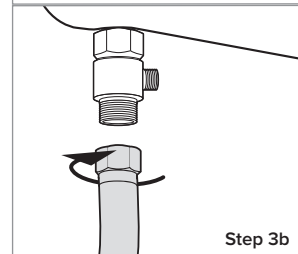
- Install the $\frac{7}{8}$ " cold water T-valve with one or both of the large rubber washers to the incoming water connection on the bottom of your toilet tank.
- Connect the cold water supply line coming from the wall to the bottom of the T-valve.



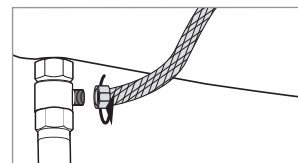
Step 3a

4. Connect Bidet Hose to T-Valve

Connect one end of the braided metal cold water bidet hose to the remaining open side of the installed T-valve.



Step 3b

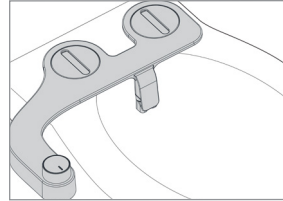


Step 4

Installation

Installing the Bidet Attachment

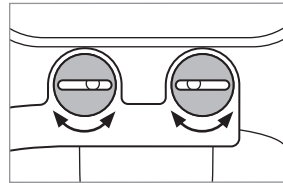
1. Install Adjustable Mounting Brackets into the Bidet Attachment. Place circular mounting brackets into the circular openings of the bidet attachment.



Step 1

2. Install Bidet Attachment on Toilet

- a. Place bidet attachment on the toilet so the nozzle is as close to the back of the toilet bowl as it will go. This will vary by toilet.
- b. Make sure the adjustable brackets line up with the holes in the toilet fixture. You may need to rotate the adjustable brackets accordingly to line them up properly.
- c. Replace the toilet seat on top of bidet attachment and secure using original toilet seat hardware. Make sure to tighten so that the bidet attachment and seat do not move.



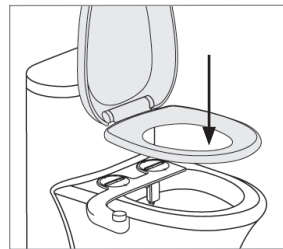
Step 2b

3. Connect Bidet Hose to Bidet Attachment

Connect the open end of bidet hose to the Cold connection under the bidet attachment.

4. Turn on Water Supply & Check for Leaks

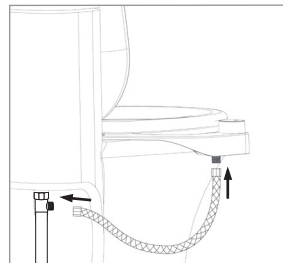
- a. Open the main water supply valve slowly and check for leaks.
- b. Wait 5-10 minutes, check again, and if there are no leaks, continue.



Step 2c

NOTE: If there is any leaking, check all rubber washers and make sure all water connections are tight and secure. If necessary, you can use plumbers tape for any leaking connections.

TIP: If spray direction is off-center after installation, unscrew the bolts, reposition the attachment slightly forward, and secure back in place. Depending on your preferences or body composition, the perfect position may require some readjustment.



Step 3

PRODUCT OPERATION

Using the FreshSpa Comfort+

To engage the front wash setting, turn the dial counterclockwise towards the “FRONT” wash zone.

- The further the dial is turned, the higher the water pressure will be.
- To lower the water pressure, turn the nozzle back towards the center.

To engage the rear wash setting, turn the dial clockwise toward the “REAR” wash zone.

- The further the dial is turned, the higher the water pressure will be.
- To lower the water pressure, turn the nozzle back towards the center.

To clean the bidet nozzle, turn the control dial towards the “Nozzle Cleaning” position and water will wash over the nozzles.

