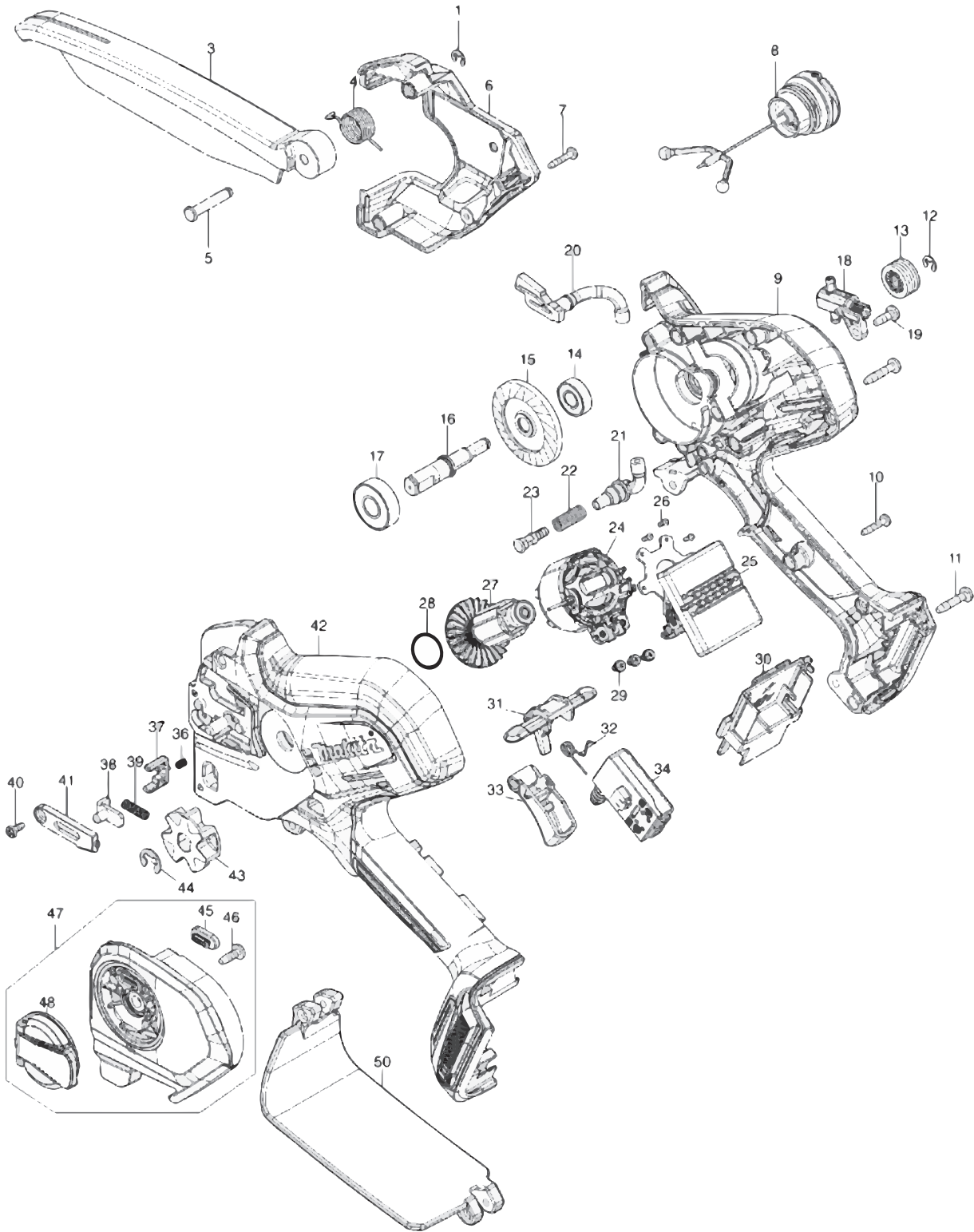




XCU14



Products with multiple versions are listed in subsiding order with the newest version on top not indented.

Section	Fig. No.	Part No.	Description	XCU14	Tech Bulletin	Notes
1	1	961011-9	STOP RING E-4	1		
1	3	413T68-1	SAFETY COVER	1		
1	4	232785-2	TORSION SPRING 14	1		
1	5	256A31-5	SHOULDER PIN 5	1		
1	6	413L96-8	HOUSING R COVER	1		
1	7	266429-2	TAPPING SCREW 3X16	3		
1	8	126832-8	TANK CAP ASSEMBLY	1		INC. O-Ring
1		213894-6	O-RING 25	1		Not Pictured
1	9	183Y31-5	HOUSING SET	1		INC. Rubber Pins
1		263005-3	RUBBER PIN 6	2		Not Pictured
1		347A70-7	TANK GUARD	1		INC. 42
1	10	266429-2	TAPPING SCREW 3X16	10		
1	11	911138-5	P.H.SCREW M4X20 WITH WR	2		
1	12	961011-9	STOP RING E-4	1		
1	13	226884-0	WORM GEAR	1		
1	14	211166-3	BALL BEARING 698DDW	1		
1	15	227A17-6	SPIRAL BEVEL GEAR 53	1		
1	16	327A89-2	SPINDLE	1		
1	17	210059-1	BALL BEARING 6000DDW	1		
1	18	141N25-0	OIL PUMP COMPLETE	1		
1	19	266427-6	TAPPING SCREW 4X12	1		
1	20	422968-4	OIL TUBE 3-60	1		
1	21	422969-2	OIL TUBE 3-25	1		
1	22	232774-7	COMPRESSION SPRING 6	1		
1	23	413L02-3	NIPPLE	1		
1	24	629B92-8	STATOR	1		
1	25	620M06-6	CONTROLLER	1		
1	26	266490-9	TAPPING SCREW PT 2X6	3		
1	27	619791-8	ROTOR	1		
1	28	213A05-9	O-RING16	1		
1	29	652069-6	FLAT HEAD SCREW M3X6	3		
1	30	643874-2	TERMINAL	1		
1	31	413L98-4	LOCK OFF LEVER	1		
1	32	232784-4	TORSION SPRING 6	1		
1	33	413L97-6	SWITCH LEVER	1		

Products with multiple versions are listed in subsiding order with the newest version on top not indented.

Section	Fig. No.	Part No.	Description	XCU14	Tech Bulletin	Notes
1	34	650033-1	SWITCH C3XA-3PSPM-1	1		
1	36	233211-4	COMPRESSION SPRING 2	1		
1	37	413M02-9	STOPPER	1		
1	38	347A69-2	TENSION SLIDE	1		
1	39	232787-8	COMPRESSION SPRING 4	1		
1	40	266492-5	TAPPING SCREW 3X8	1		
1	41	413M03-7	COVER	1		
1	42	183Y31-5	HOUSING SET	1		INC. 9
1		263005-3	RUBBER PIN 6	2		Not Pictured
1		347A70-7	TANK GUARD	1		INC. 9
1	43	227947-5	SPROCKET 7	1		
1	44	961013-5	STOP RING E-7	1		
1	45	422970-7	GROMET	1		
1	46	266427-6	TAPPING SCREW 4X12	1		
1	47	136914-8	SPROCKET COVER ASS'Y	1		INC. 45,46,48
1	48	141M77-5	NUT COMPLETE	1		
1	50	141T90-5	REAR HAND GUARD COMPLETE	1		INC 50
1	A01	1912F1-4	GUIDE BAR 6 SET	1		Not Pictured
1	A02	1912E8-3	SAW CHAIN 6 SET	1		Not Pictured
1	A03	199897-3	OIL VESSEL SET	1		Not Pictured
1	A04	413T67-3	GUIDE BAR CASE 175	1		Not Pictured