



**DETAIL K2 INC.**

DK2 POWER USA  
4301 S Valley View Blvd STE 10-11  
Las Vegas, NV 89103  
1-702-331-5353

DETAIL K2, INC.  
1080 Clay Avenue Unit 2  
Burlington, Ontario, Canada L7L0A1

DK2 USA EAST  
6245 Industrial Parkway  
Whitehouse, OH 43571

**PARTS AND SERVICE 702-331-5353 OR [WWW.DK2POWER.COM](http://WWW.DK2POWER.COM) CONTACT US**

**CHIPPER SHREDDER TOP LOADING**



**OFF ROAD TOWING ONLY**

**STEP 1:**

1. Install the axle with bolts provided.



## STEP 2

1. Install wheels. Use locking pins in axle to lock wheels from moving while your chipping, or free wheel when towing.



**STEP 3:**

1. Install drop stand
2. Install Tow Bar



**STEP 4:**

1. Install the 3 inch tree feed chute with the bolts provided.





**STEP 5:**

1. Install handle with 4 bolts.



**STEP 6:**

1. Mount the top chute to the unit.
2. Plug in the white connector for the key switch



1. Mount the chip chute



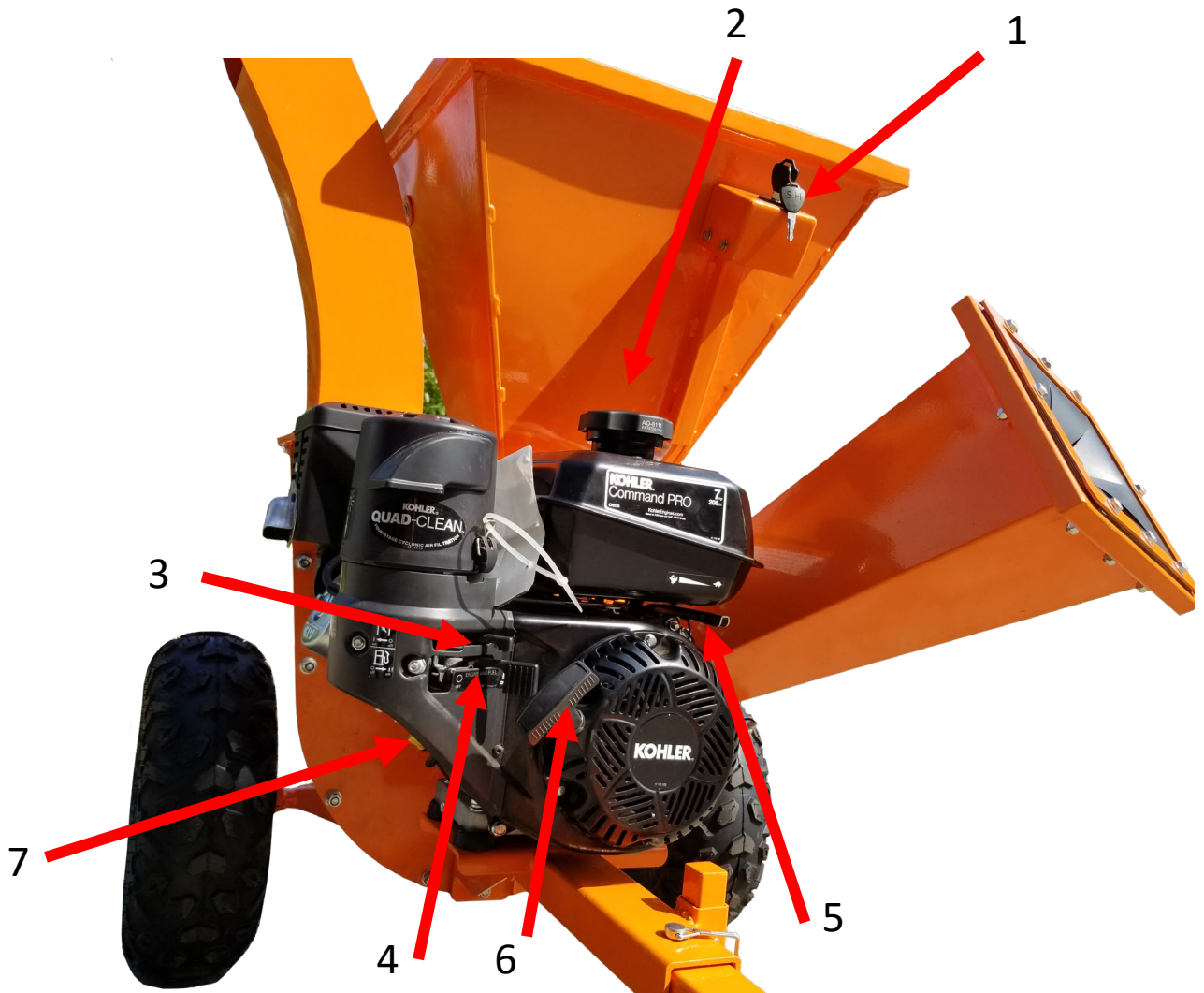


**STEP 8:**

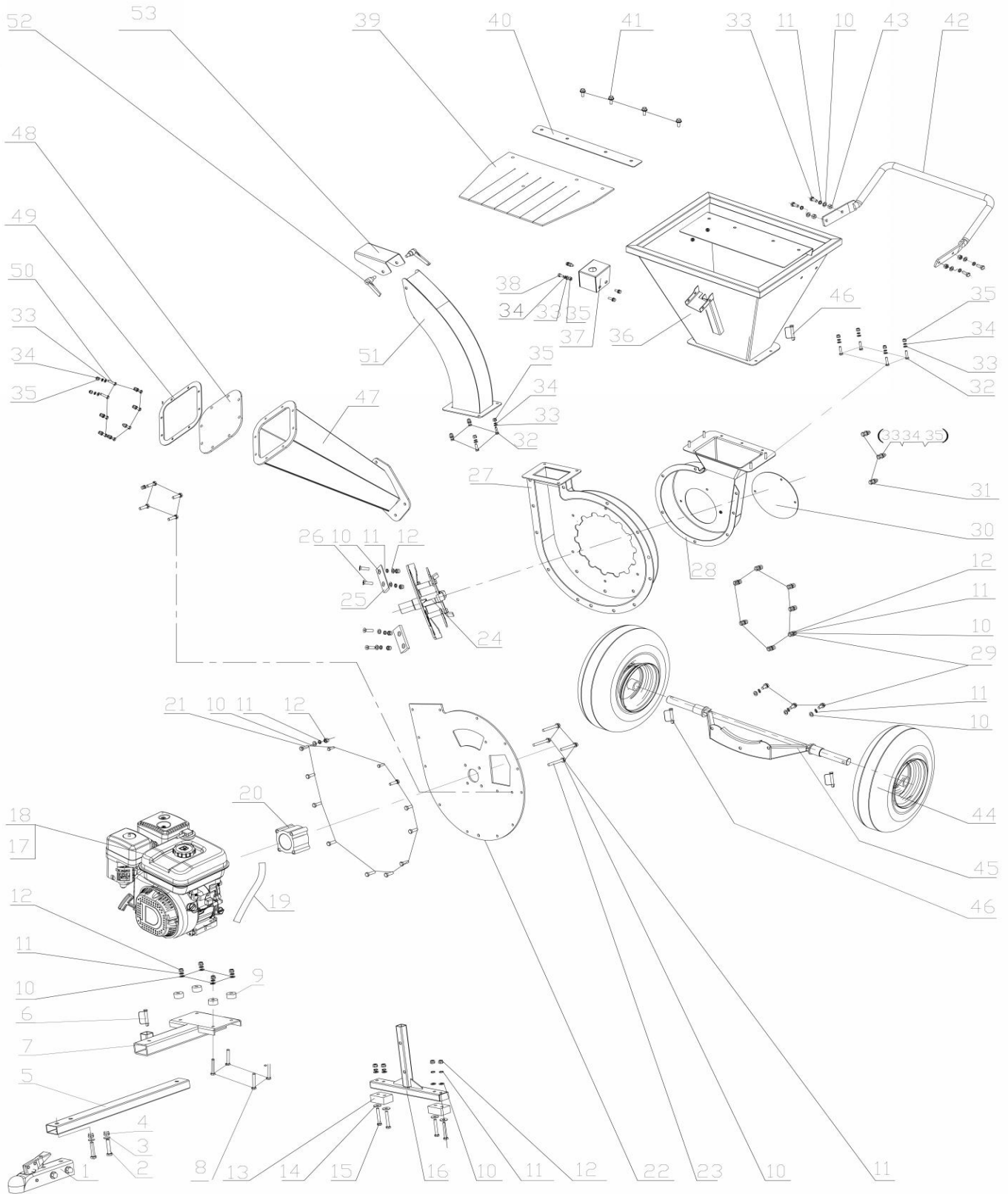
1. Fill oil 10w30
2. Gas mid grade
3. Small sticks 3/8 dia max and leaves in top hopper
4. Trees up to 3 inches into side feed chute



READ THE ENGINE MANUAL SUPPLIED WITH YOUR UNIT FOR FULL ENGINE OPERATION, SAFETY, AND MAINTENANCE.



1	<b>ON/OFF KEY LOCK</b>
2	GAS – USE MID GRADE OR HIGHER
3	CHOKE – LEFT IS ON / RIGHT IS OFF (RUN POSITION)
4	GAS ON/OFF SWITCH – LEFT IS OFF / RIGHT IS ON
5	THROTTLE – RABBIT FAST / TURTLE SLOW
6	PULL STARTER – PULL TIGHT- THEN PULL START
7	OIL – FILL TO MARK 10W30, WILL NOT START IF OIL IS LOW, HAS LOW OIL SHUTOFF PROTECTION. 2 YELLOW CAPS ARE OIL FILL CAPS. USE EITHER ONE TO FILL OIL.



Ref.No.	Description	Ref.No.	Description
1	hitch trailer	27	middle chipper room
2	Bolt M10*50	28	outside chipper room
3	washer 10	29	M8*20 Bolt
4	lock nut M10	30	cover plate
5	Tow bar	31	M6*20 bolt
6	safety pin $\Phi 8*60$	32	M6*25 bolt
7	tow bar connecting part	33	washer 6
8	Hexagon flange boltM8*55	34	spring washer 6
9	rubber washer M30*15	35	lock nut M6
10	Washer 8	36	top feed hopper
11	spring washer8	37	switch cover
12	lock nut M8	38	M6*16 bolt
13	rubber foot	39	top feed rubber
14	gasket 8	40	depression bar
15	Bolt M8*50	41	M8*25 Bolt
16	Front foot support	42	handle
17	engine	43	lock nut M8
18	key 4.8*5*55	44	tire 145/70-6
19	engine wire	45	wheel axle
20	protection pipe	46	safety pin $\Phi 8*45$
21	M8*25 Bolt	47	side feed hopper
22	inside plate chipper room	48	side feed rubber
23	5/16-24UNF*90 bolt	49	Flange clamp
24	blade plate	50	M6*30 bolt
25	blade	51	outlet hopper
26	M8*25 Bolt	52	M8*20 Bolt
		53	outlet hopper adjust plate

## OPERATION – **BEFORE TURNING KEY AND PULL STARTING ENGINE**

CLEAR AREA OF ALL PEOPLE AND PROPERTY THAT COULD BE DAMAGED. THINK SAFETY. CHIPS ARE FLYING PROJECTILES AND CAN CAUSE INJURY.

WEAR SAFETY GLASSES, HEARING PROTECTION, AND GLOVES

DO NOT WEAR LOOSE FITTING CLOTHES THAT COULD GET STUCK IN THE MACHINE MOVING PARTS, ONLY CHIP WOOD, CHILDREN SHOULD NOT RUN THIS EQUIPMENT, STAY ALERT OF YOUR SURROUNDING AND PERSONS THAT COULD APPEAR IN THE CHIP PATH WHILE YOU ARE WORKING.

**UNIT IS DIRECT DRIVE. NO CLUTCH** TO SLIP OR BURN UP.

Before starting make sure all chutes are clear of branches as the cutting wheel will turn as you pull the recoil starter. Cutter wheel must be free to turn when starting.

### PERFORMANCE OPERATION -

Feed larger trees upto 3 inches in diameter slowly into the tubular feed chute allowing the cutter wheel to regain speed. Shoving a tree into the cutter wheel will stall the machine and damage the cutters or drive shaft.

Feed twigs, leaves, and branches up to 3/8 inch dia into the top hopper.

Wear gloves, as the cutter will grab the branches and pull them into the machine and from your hands. NEVER PLACE HANDS INTO THE TOP FEEDER.

To clear the top feeder turn the key off, remove it, unplug the spark plug.

Be safe, the cutters on this machine are high speed and very sharp.

SET BOTH OF YOUR WHEEL BRAKE PINS to STABILIZE MACHINE DURING OPERATION.  
READ AND OBEY ALL WARNING LABELS ON THIS MACHINE.



# QUICK START AND TROUBLE SHOOTING GUIDE

## QUICK START SETUP

- ADD 10W30 OIL TO ENGINE
- ADD GAS
- PIN BOTH WHEELS INTO PIVOT BRAKE HOLES.
- TURN KEY ON
- HALF THROTTLE (CHOKE OPTIONAL FOR COLD STARTS)
- SET THROTTLE TO JUST OVER TURTLE
- PULL START THE ENGINE

## TREE CHIPPING

- ENGINE ON HIGHEST SPEED
- FEED SMALLER TREES INTO CHUTE AND LET GO, TREE WILL AUTO FEED.
- FEED LARGER TREES SLOWLY ALLOW CUTTER WHEEL TO REGAIN RPM SPEED BETWEEN CUTS.
- FEED LEAVES, TWIGS AND UPTO 3/8 INCH DIA TREES INTO TOP HOPPER.

## TROUBLE SHOOTING

- **ENGINE WONT START**
  - TURN KEY ON – CHECK ENGINE OIL LEVEL - CHECK GAS LEVEL
  - FOLLOW YOUR ENGINE MANUAL FOR FURTHER TROUBLE SHOOTING.
- **UNIT VIBRATES**
  - CHECK YOUR CHIPPER FOR MISSING OR LOOSE BLADES.
  - CHECK YOUR CHIPPER WHEEL IS NOT OBSTRUCTED AND FREELY TURNS.



## PLEASE DO NOT RETURN TO THE STORE

YOU HAVE A 1 YEAR WARRANTY AND DK2 WILL REPLACE A DEFECTIVE PART FOR FREE

**CALL US AT 702-331-5353 FOR FAST WARRANTY PARTS AND QUESTIONS**

### **WHAT IS COVERED – 3YR ENGINE AND 1 YEAR COMMERCIAL WARRANTY INCLUDED**

Detail K2 Inc. warrants to the original purchaser that model OPC503 will be free and clear of manufacturing defects in workmanship and materials under normal use and service for a period of one (1) year from the date of the original purchase. If within one (1) year from the original date of purchase this OPC503 fails due to defect in material or workmanship, Detail K2 will repair, replace, or supply any covered defective part at our option. DK2 POWER OPC503 is 1-year parts only warranty no labor. Kohler 3 year warranty is PARTS and LABOR.

Upon expiry of one (1) year, Detail K2 will have no further liability related to the product. Detail K2 does not authorize any party, including its authorized distributors or dealers, to offer any other warranty on behalf of Detail K2 Inc.

SERIAL NUMBERS MUST BE REGISTERED ONLINE AT [WWW.DK2POWER.COM](http://WWW.DK2POWER.COM), WARRANTY NON-TRANSFERABLE.

KOHLER ENGINES – KOHLER CH SERIES ENGINES COMMERCIAL 3 YR PARTS AND LABOR WARRANTY

KOHLER ENGINES – KOHLER SH SERIES ENGINES RESIDENTIAL 2 YR PARTS AND LABOR WARRANTY

see your Kohler manual for specific warranty.

DK2 OPC503– 1-Year parts only, no labor. 3-year commercial Kohler warranty.

THIS WARRANTY DOES NOT COVER OR APPLY TO:

Damage to the product due to misuse, mishandling and abuse

(b) Improper installation, maintenance and storage

(c) Expendable parts such as nuts and bolts, pins and springs, wiring and switch components, hydraulic hoses and fittings, cutting teeth, cutting chains, cutting blades, throttles, belts and tires.

(d) Normal wear and tear

(e) Consequential damage & incidental damages such as damage to persons or property

### **PROCEDURE FOR OUTDOOR POWER EQUIPMENT WARRANTY**

Within the one (1) year warranty period, the purchaser of the product can CALL 702-331-5353 DK2POWER or contact us on [www.DK2Power.com](http://www.DK2Power.com). Notify us of the claimed defect and provide proof of original purchase. At this time the validity of the claim will be determined, and if approved replacement parts will be issued. No returned product will be accepted under warranty unless accompanied by an RGA# issued by Detail K2 Inc.

### **DAMAGED FREIGHT**

Damage to your product caused by freight mishandling is NOT covered under warranty. If your freight arrives damaged, REFUSE it. **Inspect your product when it arrives**, otherwise if you accept it, you will be responsible for filing any freight claims with the delivery company. Dk2 warranty excludes damage to product.

### **RETURNS BEFORE GAS AND OIL**

Follow the return policy from the retailer you purchased the equipment from.

### **RESOLUTION FOR A DEFECTIVE PRODUCT AFTER GAS AND OIL HAS BEEN ADDED.**

Call DK2Power at **702-331-5353** in Las Vegas between 8am-4pm M-F Pacific Time.