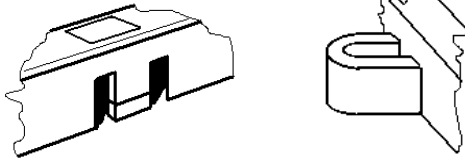


GENERAL INFORMATION

There are two parts to the inter-locking system.

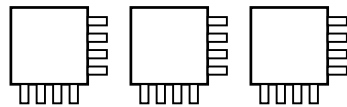


The Male Peg / The Female Loop

All tiles on any given installation should always have the female loops going in the same direction. (*Illustration 1*)

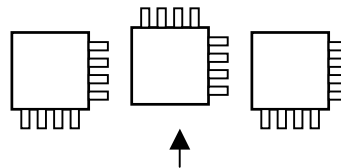
CAUTION: If you inadvertently rotate a tile 90 degrees it will snap into place (*Illustration 2*) but you will not be able to complete the installation properly.

Illustration 1



Correct

Illustration 2



Incorrect

It is important that all debris be removed from the underlying surface before laying tiles, eliminating lumps.

ASSEMBLY

Always begin the installation in one corner. Pointing the female loops in the directions that additional tiles are to be added. (*Illustration 3*)

Garage Entrance

Start Here

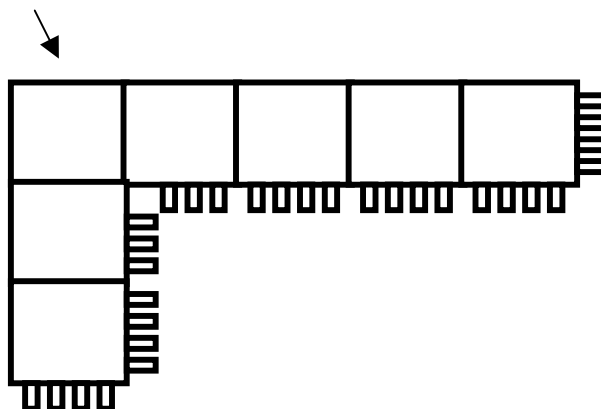


Illustration 3