

---

KAHUNA MASSAGE CHAIR

# CLOUD

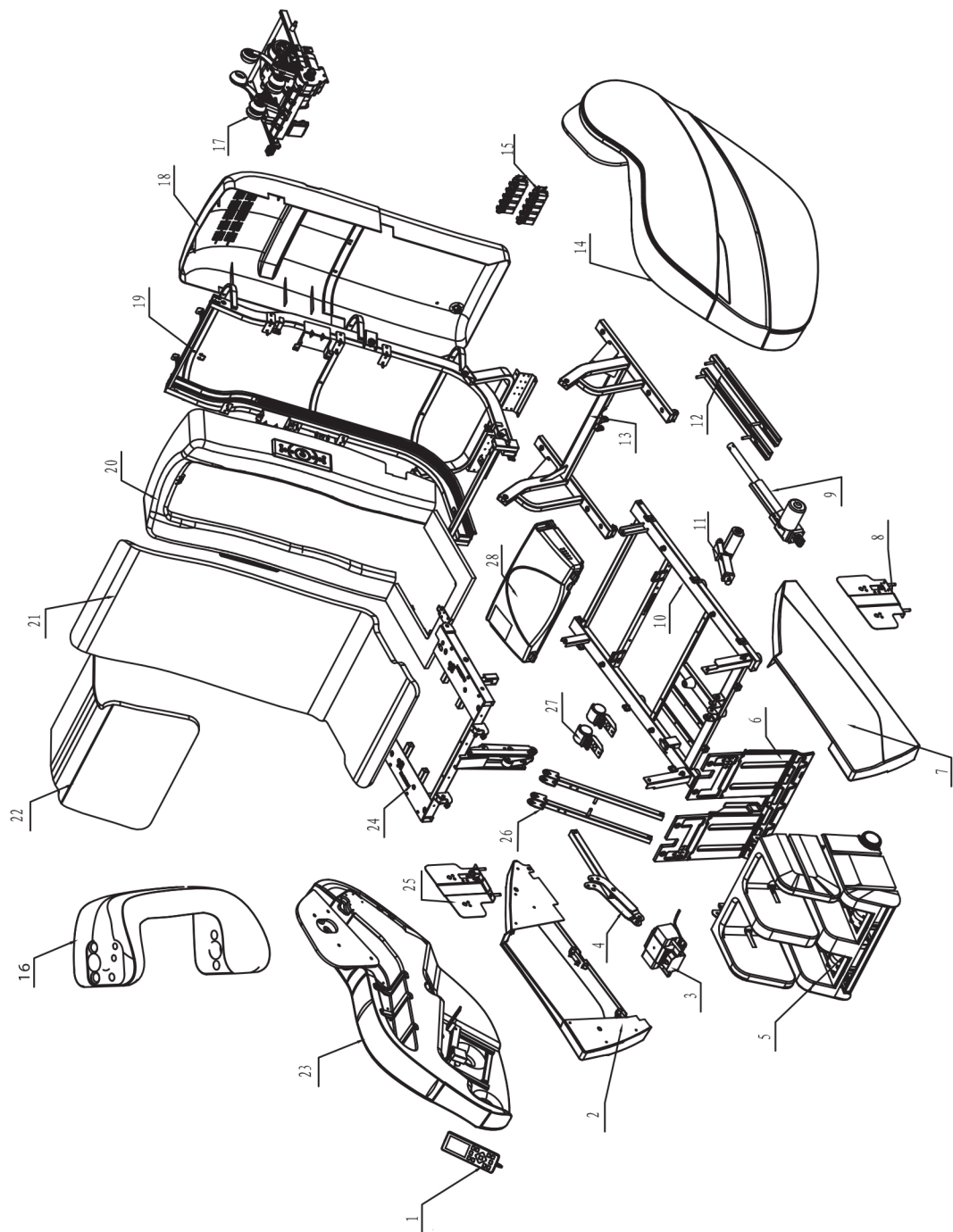
INSTRUCTION ASSEMBLY

---



# MECHANICAL COMPONENTS DIAGRAM

| Explosion diagram |



## MECHANICAL COMPONENTS LIST

No.	Name	Q'ty	No.	Name	Q'ty
1	Remote control	1	22	Pillow	1
2	Right side fender	1	23	Right armrest assembly	1
3	Air pump assembly	1	24	Seat frame surface assembly	1
4	Connecting rod	1	25	Right side of seat airbag assembly	1
5	Legrest & footrest	1	26	Seat support bar	2
6	Front fender	1	27	Castor	2
7	Left side fender	1	28	Power case assembly	1
8	Left side of seat air bag assembly	1			
9	Backrest electric actuator	1			
10	Bottom seat frame assembly	1			
11	Footrest electric actuator	1			
12	Sliding rail	2			
13	Top seat frame assembly	1			
14	Left amrest assembly	1			
15	Electric magnetic valve	2			
16	Headrest Plastic Parts Assay	1			
17	Massage machine	1			
18	Back cover assembly	1			
19	Back frame assembly	1			
20	Backrest plastic front cover and seat plate assembly	1			
21	Back and seat cushion	1			

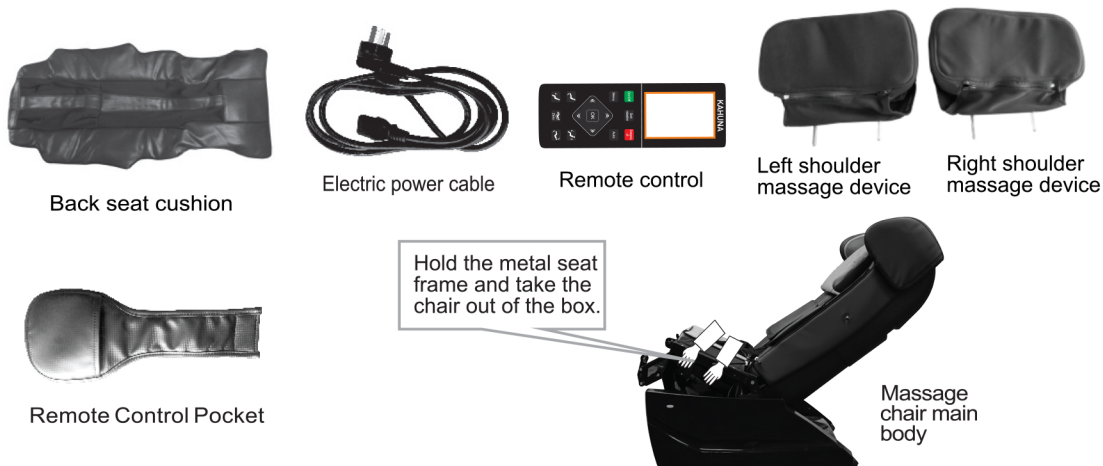
# INSTALLATION

## Step1. How to move the chair

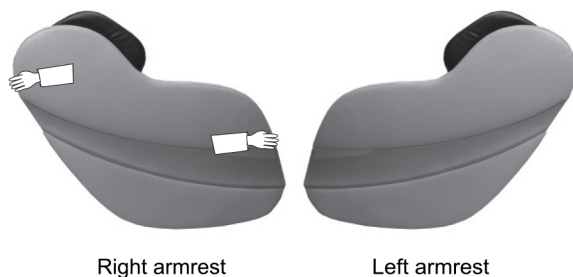
- 1 Slowly take the chair out of the box. With the help of another person, grab the left and right metal frame of the massage chair.

**Note** Please place the remote on top of the chair seat in order to avoid it getting crushed when placing down the chair.

- 2 Take out the remainder of the assembly items and place them to the side.



- 3 Slowly take out the right and left side of the arm panels from the carton box and place them to the side.



- 4 Carefully take out the leg rest piece from the largest carton box.





## Step2. Massage chair position return

After taking out the main chair body, plug in the power cord and turn on the switch. The chair will recline to the up position. Unplug the power cord to make the chair retain this position

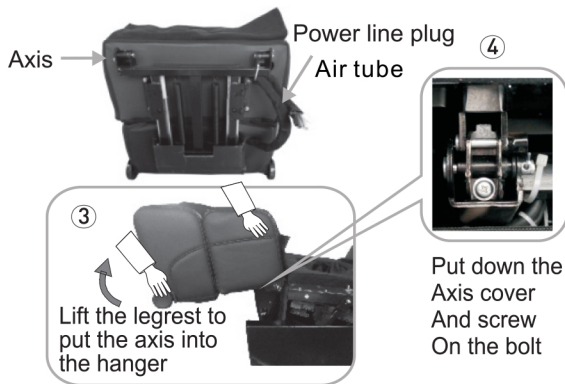
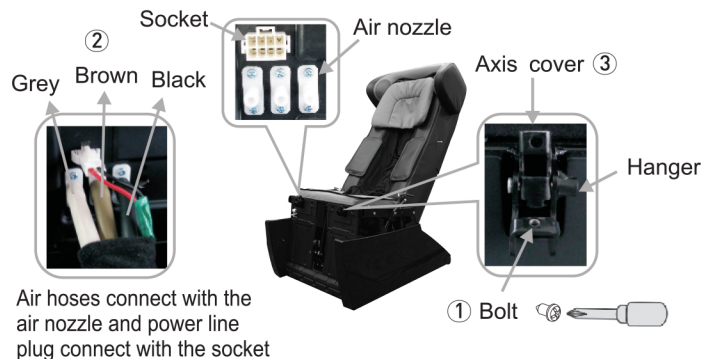


## Step3. How to assemble the legrest

Install the legrest to the main body,

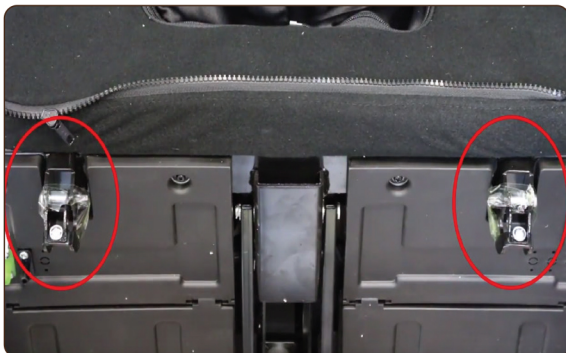
❶ Unscrew the 2 screws from the latches on the legrest portion of the main chair body.

❷ Connect the 3 air tubes to the air connectors on the main chair body. Color specific from left-to-right: grey, brown, and black.



❸ Connect the power line to the power socket tightly.

❹ Raise the 2 latches on the legrest portion of the main body, place the legrest into them, lower the latches, and screw the 2 screws back in tightly.



# INSTALLATION

## | Step4. How to assemble the left and right armrest |

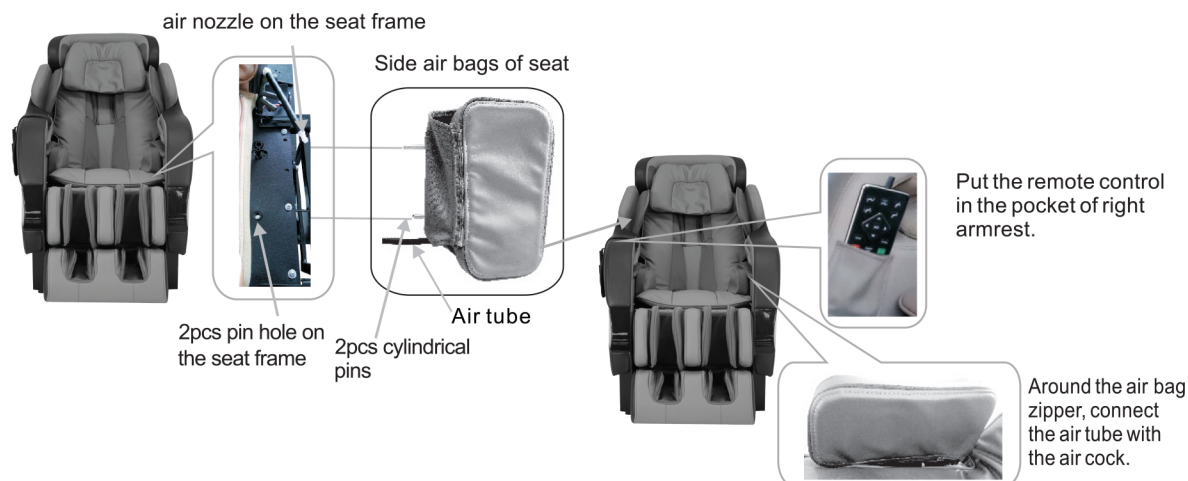
- ❶ Unscrew the M6 screw on the seat frame with a cross screwdriver.
- ❷ While pushing down the release button on the fixed hole located in the rear section of the side panel, insert it into the short metal rod sticking out from the top section of the main chair body.
- ❸ Insert the square tube like metal piece on the side panel to the side piece located on the rear end of the main chair body. Slightly move the armrest to make the bolt holes align. Screw the M6 screws into the holes (First fix the screw for the rear end, then the front)
- ❹ Connect the air hoses of the same color on the side panel to the ones on the seat.



## Step5. Set up the seat side air bags and remote control

How to set up the seat side air bags

- ❶ Take out the left and right seat side air bag, put the zipper side towards the seat cushion, insert the two cylinder pins into the holes of seat frame firmly.
- ❷ Connect the air tube with the air cock behind the seat firmly.



# INSTALLATION

## Step 6. Put the back

Set up the cushions on the backrest and connect the two parts with zipper and velcro.



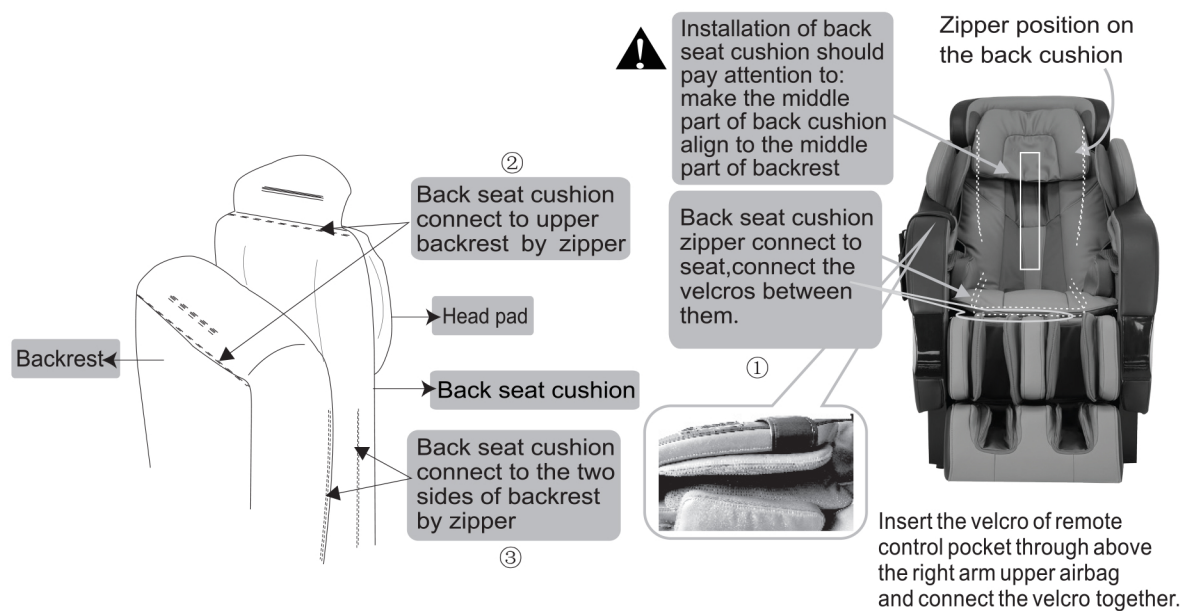
Back seat cushion



Remote Control Pocket

### Tip

In order to get exact correct body test data for comfortable massage effect, when you sit on the chair, please make the bottom rim of the head pad level with your ears before zippering the said two parts.



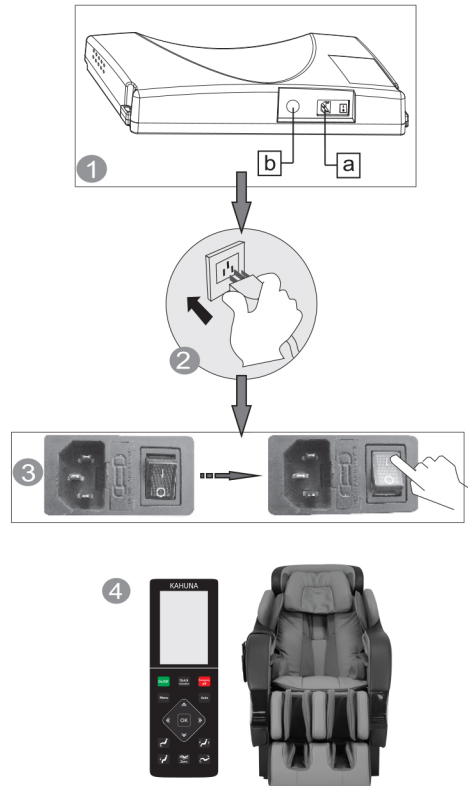
## Step7. After the assembly |

After the assembly, please operate the chair in this order:

- ❶ Plug the cable line in the hole a on the power box as shown in the right picture. Hole a connect with one end of cable line.
- ❷ Insert the plug of cable line into the socket.
- ❸ Switch on.(Switch on/off "0/1", press I down to turn it on.)
- ❹ Enjoy the massage by using the remote control.



Make sure the switch is off before you insert the plug of cable line into the socket.





# THE ADJUSTMENT BEFORE MASSAGE

## Environment

### ⚠ Caution



Don't use the chair in wet places like near the swimming pool and bath room to avoid leakage or electric shock.



Don't use under the sunlight or near stove or other heating place to avoid upholstery being deteriorated.



Please use chair in a flat place to avoid chair falling or noise or other unexpected troubles.

### • Check places in front

Check the areas when back and leg are extending, make sure no people, pets or other things are around.



### • Check power cable, plug

- (1) Clean the dust on plug on time.  
(using dry cloth).
- (2) No damage, re-do, bend, stretch, tie or press with heavy thing (especially can't be pressed by the chair) on power cable.



## Check environment

### Space size for using the chair

- At least 3 inches from wall.



- At least 11.8 Inches in front of the leg.

## Check surroundings

When the backrest or legrest reclines or extends, check any person or things in every direction and space size.





# THE ADJUSTMENT BEFORE MASSAGE

## How to move massage chair

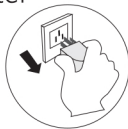


### Caution

Don't move chair when it's working in case of accidents or damage.

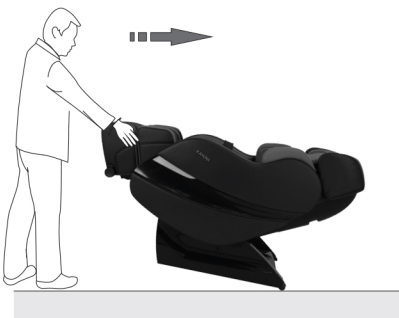
### How to move

- Bind the cables and put them in the seat to avoid damage when moving.
- If you plump the chair, it may damage the inner parts of the chair.
- Don't use the castor if the floor is wooden or other easy damaged material. It will need 2 or more people to lift the chair.
- Make sure the power is off and the plug doesn't touch the floor. (It's better to let the chair in standing status to avoid the back crashing the floor)



### Normally

Lift up the legrest to make the gravity fall on the castor. Then push chair to destination and set it down.



### Warning

- Please hold the footrest to move the chair as shown in the picture in case any scratches on the leatherette.
- Unplug the remote control and power cord before moving the chair to avoid damage to the plugs. Moving the chair while plugs are connected will void coverage for the remote control and power cord.

## Adjustment before massage

### Before adjustment

- Please make sure the massage head in the seat part before sitting on the chair.



- To avoid injuries caused by wrong position of the massage head.

### Acupuncture point tracking

Detecting confirm if massage head can't detect when acupuncture point position detecting, shoulder position was default to the middle position.

### The correct position

Lie on the backrest and keep head on the pillow. When body scan is complete, there will be a buzzer or remote control. Press the up or down key to adjust the shoulder position if necessary.



**\*Avoid the wrong detection of shoulder height during body scan, please follow above direction, otherwise you won't get a good massage.**

### Suggestion



- When you feel the intensity isn't strong enough, take off the pillow or cushion.

- Because the chair is heavy, it may ruin your floor in long time setting. Please put a blanket or other soft things to protect your floor.



## TECHNICAL DATA

Name	SL-track Massage chair	Power	200 W
Model	CLOUD	NW/GW	Main body : 198 lb/ 246 lb Armrest : 40 lb / 62 lb
Input voltage	AC120V, 60Hz	Packing size	Main body 50 x 29 x 49 inch
Safety design	Class 1		Armrest 44 x 17 x 34 inch



KAHUNA CHAIR PRODUCT WARRANTY REGISTRATION  
<https://www.kahunachair.com/services/>



**Product** Massage Chair

**Model** CLOUD

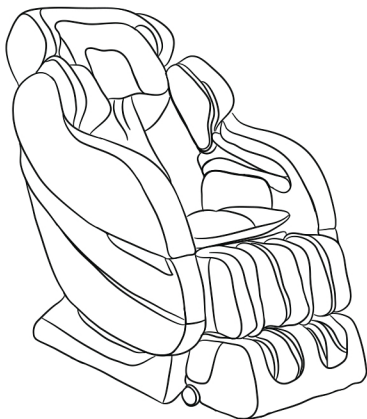
Developed by AJX Distribution LLC

11125 Knott Ave, Suite D

Cypress, CA 90630

**Tel** 1-855-646-9500

**Email** INFO@KAHUNACHAIR.COM



You must register warranty at [www.kahunachair.com/services/](http://www.kahunachair.com/services/)

---

INSTRUCTION MANUAL  
MODEL:CLOUD

Please read this user manual thoroughly prior to operating the massage chair. Store this booklet for future reference.