

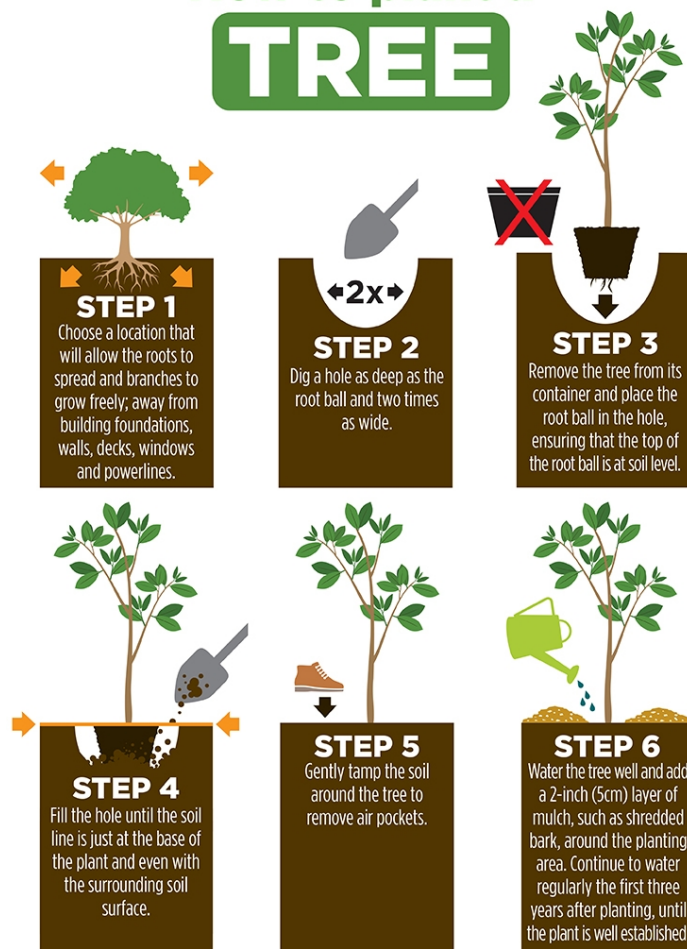
# USE & CARE MANUAL

## HOLLY NELLIE R. STEVENS

(Ilex x 'Nellie R. Stevens')

### PLANTING GUIDE:

#### How to plant a **TREE**



STEP 1) First, decide on a planting location. Consider carefully what kind of sun, soil, and growing-space your tree or shrub will need.

STEP 2) Once you've located the perfect spot, the hole you are digging must be at least double the width and as deep as the root system you are planting.

STEP 3) The top of the root system should be level with the ground. Before placing the tree or shrub in the hole, use your hands to gently break up the root system.

STEP 4) Once the tree is in place, backfill the hole with native soil and any leftover potting material.

STEP 5) Pack down the soil to eliminate any air pockets.

STEP 6) When finished, water thoroughly.

(continued below)

### **PLANTING CARE:**

For best results, plant 'Nellie R. Stevens' holly in an acidic soil in full sun, though it can tolerate other soil types or partial shade. Water the plant regularly for a few months to help it get established

'Nellie R. Stevens' holly requires little maintenance after it has gotten established. It's quite drought tolerant and doesn't even need pruning, since it naturally grows into an attractive pyramidal form.

It has good resistance to most pests and diseases.