

# Schluter®-Profiles

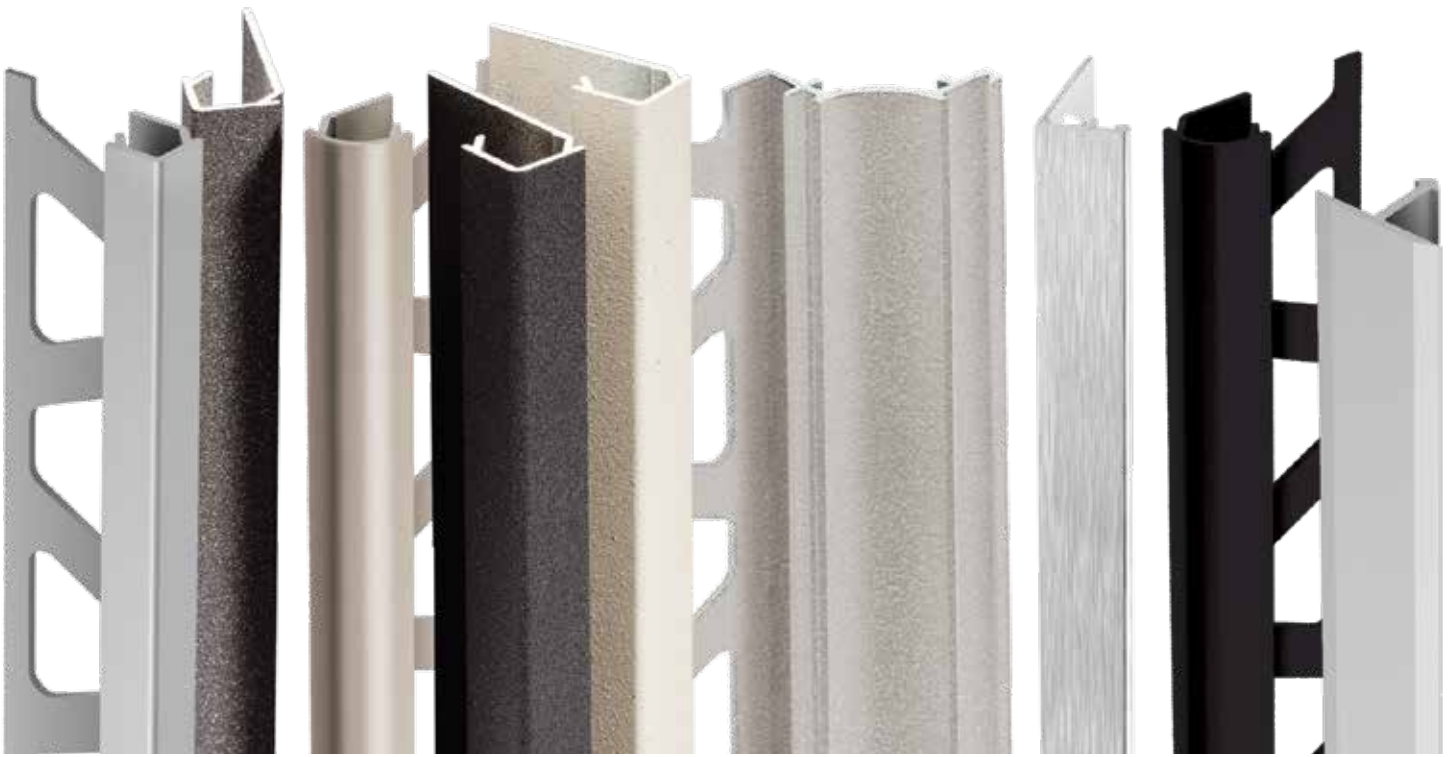
Details make the difference



PROFILE OF INNOVATION



Protect.  
Define.  
Design.



Ensure the integrity of your tile installation and embrace your design options with Schluter finishing and edge-protection profiles.

### Protect Tile Edges

Tile edges can be quite brittle, and if left unprotected, the exposed edges will likely crack and chip. Schluter offers a variety of finishing and edge-protection profiles to protect tile edges at outside and inside corners, on walls and floors.

### Shapes & Sizes & Colors & Finishes

A large selection of finishing and edge-protection profiles available in a vast assortment of materials, finishes, and colors offers you increased flexibility in design. Trim and protect your tile with a finishing profile in classic metals, color-coated or textured color-coated aluminum, or PVC. From sleek to square to round to fine, you're sure to find a shape that suits your style.

### No More Caulking

Cove-shaped profiles provide an attractive, clean, and maintenance-free alternative for inside wall corners and floor/wall (including countertop/backsplash) transitions. They're practical, easy to clean, and eliminate the need for caulk!



Crisp whites and subtle metallics come together to create a tranquil, modern his and hers space.





**QUADEC** square-shaped profiles taper off the tile edges of the vanity and niche while **DILEX-BWA** eliminates the need for caulking between the vanity and pony wall.





TRENDLINE textured color-coated aluminum finishes, allow you to craft cohesive designs with your tile. Whether you choose to create a complementary or contrasting look, the design possibilities are endless.





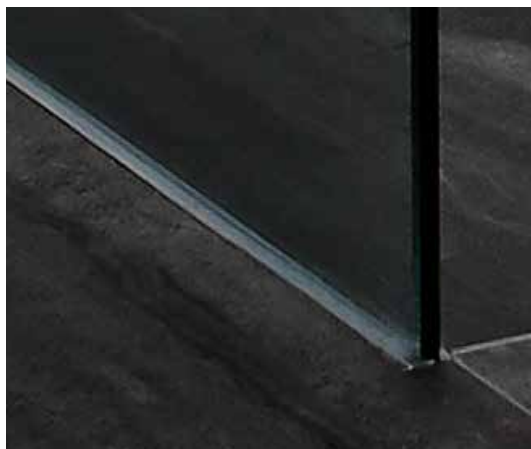
The **QUADDEC** profile in Cream subtly accentuates the niche, while the **DILEX-EKE** blends in with the grout and the **DECO-SG** renders itself nearly invisible as it holds the glass shower wall.



What is more striking than black on white? In this bathroom, the black shower drain blends in with the shower floor while crisp white profiles contour the niche and nestle between the floor and wall.







**JOLLY** offers a discreet and minimalist reveal to elegantly frame the elongated niche. **DILEX-EKE** eliminates the need for grout and separates the individual tile fields at the floor/wall transition. **DECO-SG** acts as a support channel for the glass wall.



Details make the difference in this quaint bathroom. Tiled walls with matching profiles give the allure of a larger space, while the tileable grate virtually disappears into the shower floor.





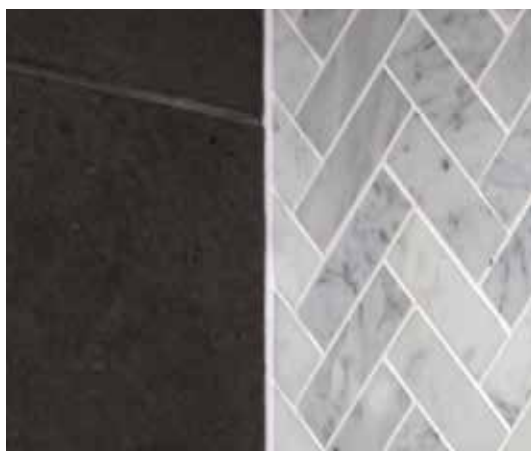
**QUADEC** square-shaped profile and corners used to finish the tile edges on the wall, shower curb and niche. **DILEX-EKE** PVC corner movement joint profile used to create a seamless transition between the shower walls and floor.





Modern and warm greys are complemented by polished chrome accents in this stately bathroom featuring a tiled countertop and curbless shower.





The shower niche and tiled countertop are framed using the **QUADEC** profile in polished chrome anodized aluminum. **DILEX-EKE** seals abutting walls in the shower.





This rustic chic bathroom features a curbless shower with large-format floor tile and matte black fixtures.





The clean and modern look of **QUADEC** profiles in matte white frame the vanity countertop, pony wall, and shower niche. **JOLLY** protects the outside edges of the shower wall, while **DILEX-EKE** acts as a transition from floor to wall in the shower.



Stainless steel profiles and a sleek linear drain accent the stunning mosaic tile in this contemporary curbless bathroom.







**RONDEC** bullnose profile and corner piece accessories used to finish the tile edges on the partition wall and shower bench. **DESIGNLINE** decorative profile applied to the wall. **DILEX-EKE** PVC corner movement joint profile inserted in the shower corners and along the bench to create a seamless transition. **SHOWERPROFILE-S** system profile eliminates cutting the wall tile to match the slope of the shower base, and allows for an easy installation of the first course of tile along the top edge of the profile.



White and pewter profiles blend with the floor and wall tiles, while a beautiful glass mosaic wall and elegant linear drain complement this modern bathroom.







**RONDEC** bullnose profile and matching corners used to finish the tile edges on the walls, tub surround, shower bench, and to trim the shower niche. **RONDEC-CT** double-rail edging profile applied to the sink rail. **DILEX-AHK** cove-shaped profile used to create a smooth transition between the walls and floor. **SHOWERPROFILE-S** system profile eliminates the need to cut the wall tile to match the slope of the shower base, and allows for an easy installation of the first course of tile along the top edge of the profile.



Matte white profiles blend seamlessly into the tile around the window area and between the countertop and backsplash.





**RONDEC-STEP** edges out the tiled countertop while **QUADEC** frames out the tiled window ledge. **DILEX-BWA** replaces the need for grout between the countertop and wall tile.





Beige profiles blend perfectly with the large-format tiles on the countertop, as well as frame the mosaic insert in the backsplash.





**RONDEC-CT** double-rail edging profile applied to the sink rail. **RONDEC** bullnose profile used to finish the tile edges of the backsplash, and produce the tiled-under sink. **DILEX-AHK** cove-shaped profile used to create a smooth transition between the countertop and backsplash. **QUADEC-FS** double-rail edging profile used to frame the mosaic insert in the backsplash. **DILEX-EKE** PVC movement joint profile inserted in the backsplash corners for a seamless transition. Matching corners used throughout.





The satin anodized aluminum profile on the sink rail creates a bold, sleek finish in this kitchen design.





**RONDEC-STEP** edging profile applied to the sink rail. **RONDEC** bullnose profile and large radius sink corners used to produce the tiled-under sink. **DILEX-AHK** cove-shaped profile used to create a smooth transition between the countertop and backsplash.





Subway tiles on the backsplash, porcelain tiles with granite look, and brushed aluminum profiles that match the appliances create this contemporary kitchen.





**RONDEC** bullnose profile and corners used to finish the countertop trim and tile edges of the backsplash. RONDEC was also used to produce the tiled-under sink. **RONDEC-CT** double-rail edging profile applied to the sink rail. **DILEX-AHK** cove-shaped profile used to create a smooth transition between the countertop and backsplash.





Transitioning from the tile floor to carpet is done effortlessly in this adjoining dining room and living room space, while adding a clean, finishing touch that blends in perfectly with the decor.







**RENO-TK** floor profile used to create a smooth transition between the tile and carpet. **RONDEC** bullnose profile and matching corners used to finish the edges of the tile base. **DILEX-EKE** PVC corner movement joint profile used to create a seamless transition between the floor and wall.



**RENO-V** floor profile used to create a smooth transition between the tile and wood.





**RENO-TK** floor profile used to create a smooth transition between the tile and carpet. **RONDEC** bullnose profile and matching corners used to finish the edges of the tile base. **DILEX-EKE** PVC corner movement joint profile used to create a seamless transition between the floor and wall.







# Schluter® Profiles

Leaving tile edges unfinished not only leads to damage, it also drastically diminishes the aesthetic appeal of the design. Schluter® profiles finish and protect tile edges, helping to ensure your installation will stand the test of time.

# Tile Edges and Outside Wall Corners

Profiles for tiled edges and outside wall corners finish and protect exposed edges of tiled surfaces such as walls and countertops.

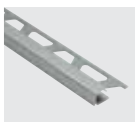
---



## Schluter®-RODEK

Bullnose profile creating a soft finish to a tiled edge or outside corner installation.

Accessories include: inside and outside corner pieces, sink corner pieces, end caps, and connectors.



## Schluter®-QUADEK

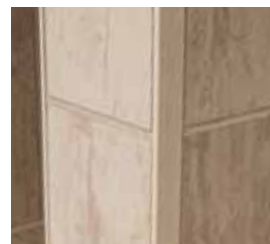
Square-shaped profile creating a sleek look.

Accessories include: inside and outside corner pieces, end caps, and connectors.



## Schluter®-JOLLY

Straight-edge profile for the outside corners of tiled surfaces on walls. Ideal for creating decorative transitions on walls.



## Schluter®-FINEK

Slim reveal profile to finish external tile edges with a discreet, minimalist design. Ideal for protecting mitered edges.



## Schluter®-DECO-DE

Stainless steel profile for 135° outside corners of tiled surfaces.







## Decorative Profiles

Decorative strip profiles are used to create design accents and interesting contrasts in the tile field. They can be used to frame a mosaic insert, create a break between two different tiles, or as a decorative accent to break up a large tile field.



### Schluter®-QUADEC-FS

Double-rail feature strip profile with square edges matching QUADEC. Features a recessed section for field or accent tile inserts.

Accessories include: inside and outside corner pieces.



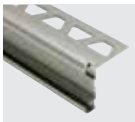
### Schluter®-DESIGNLINE

Border profile used to create decorative designs in tile fields on walls or floors.



## Countertops

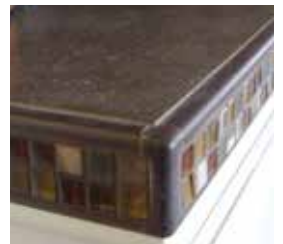
Profiles for countertops finish and protect exposed edges of tiled surfaces. The various finishes available offer endless design possibilities.



### Schluter®-RONDEC-CT

Double-rail profile with symmetrically rounded edges matching RONDEC. Features a recessed section for field or accent tile inserts.

Accessories include: inside and outside corner pieces.



### Schluter®-RONDEC-STEP

RONDEC-STEP features a symmetrically rounded edge and is available in various finishes of anodized aluminum.

Accessories include: 90° and 135° inside and outside corners.



### Schluter®-SCHIENE-STEP

Designed to cover the sub-assembly. SCHIENE-STEP is offered in brushed stainless steel and features a thin, straight edge.

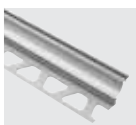
Accessories include: inside and outside corner pieces and connectors.





## Inside Wall Corners

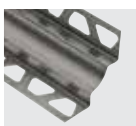
Cove-shaped profiles eliminate the need for caulking, are easy-to-clean and do not trap debris or moisture, making them suitable for use in areas with strict hygienic requirements such as showers and kitchen countertops.



### Schluter®-DILEX-AHK

Anodized aluminum profile for applications where limited movement is expected.

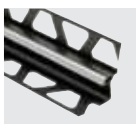
Accessories include: inside and outside corner pieces, end caps, and connectors.



### Schluter®-DILEX-EHK

Stainless steel profile for applications where limited movement is expected.

Accessories include: inside and outside corner pieces, end caps, and connectors.



### Schluter®-DILEX-EKE

PVC movement joint profile forming a discreet, uniform joint. Available in various colors to match grout.



## Perimeter Joints

A perimeter joint is designed to allow movement and reduce stress in large, tiled areas. These types of profiles also eliminate the need for caulking to create a sleek, permanent movement zone that isolates the tile covering from fixed building elements, such as bathtubs and shower trays. Profiles are available in an assortment of colors and finishes to match the grout.



### Schluter®-DILEX-BWA

PVC perimeter joint profile that isolates the tile covering from fixed building elements. Available in various colors to match grout.





# Floor Transitions

Transitions from a tiled floor to other surfaces need to be protected, and floor profiles are designed to ensure a smooth transition, while preventing tile edges from chipping and cracking.



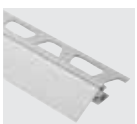
## Schluter®-RENO-U

Designed to protect tile edges and provide a smooth transition between tile coverings and floor coverings at lower elevations by abutting both surfaces.



## Schluter®-RENO-TK

Designed to protect tile edges and provide a smooth transition from tile coverings to floor coverings at lower elevations, typically carpet.



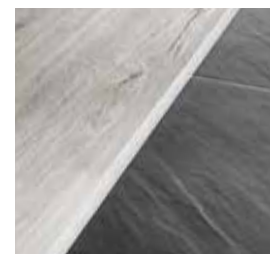
## Schluter®-RENO-V

Designed to protect tile edges and provide a smooth transition between tile coverings and floor coverings at lower elevations.



## Schluter®-RENO-T

Designed to provide transitions between existing, same-height, hard surface floor coverings.



## Schluter®-SCHIENE




Designed to protect tile edges that are typically bordered by carpet, at expansion joints, or as decorative edging for stairs.





# FINISHES and COLORS

Finish Reference Table

Finishes Products	ACB	ACG	ACGB	AE	AGR	AGRB	AGSG	AGSB	AT	ATG	ATGB	AK	AKG	AKGB	ABGB	AM	AMB	AMG	AMGB	E	EB	ES1	ES2	M	MC
 Edge-protection and transition profiles for floors																									
SCHIENE also JOLLY																									
DECO																									
RENO-T																									
RENO-TK																									
RENO-U																									
RENO-RAMP																									
RENO-V																									
 Finishing and edge-protection for walls and countertops																									
JOLLY also SCHIENE																									
QUADEC																									
QUADEC-FS																									
RONDEC																									
RONDEC-DB																									
RONDEC-STEP																									
RONDEC-CT																									
FINEC																									
DESIGNLINE																									
DECO-DE																									
 Cove-shaped profiles																									
DILEX-AHK																									
DILEX-AHKA																									
DILEX-EHK/-HKU																									

## Stainless Steel, Chrome-plated Brass, and Solid Brass



## Anodized Aluminum

### Polished and bright anodized aluminum



### Satin anodized aluminum







**Schluter Systems L.P.** • 194 Pleasant Ridge Road, Plattsburgh, NY 12901-5841 • Tel.: 800-472-4588 • Fax: 800-477-9783  
**Schluter Systems (Canada) Inc.** • 21100 chemin Ste-Marie, Ste-Anne-de-Bellevue, QC H9X 3Y8 • Tel.: 800-667-8746 • Fax: 877-667-2410

[www.schluter.com](http://www.schluter.com)