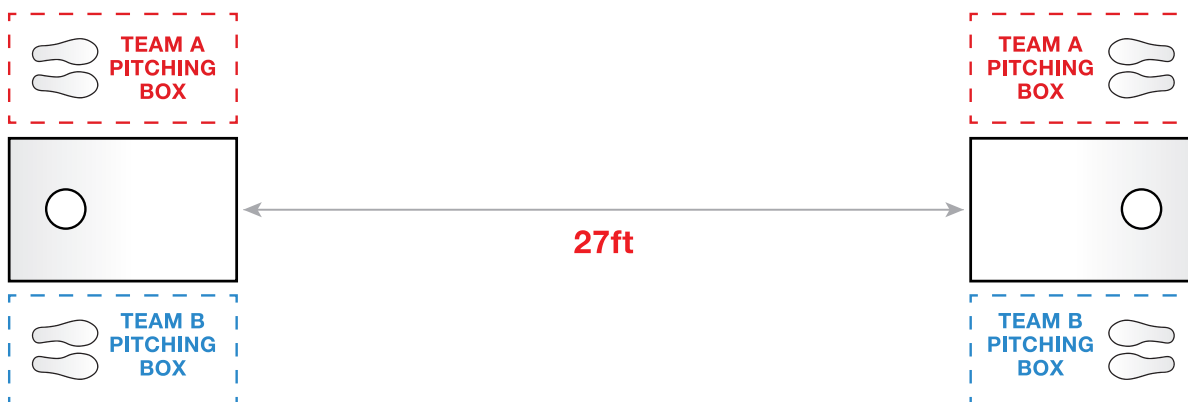


## Cornhole Game Rules

### Game Setup:

Find a nice flat surface on your lawn, in a parking lot, at the beach, etc. Set up your boards directly facing each other with 27 ft from the front edge of each board (boards can be closer for younger players and beginners). Cornhole can be played with 2 or 4 players. In a 4 player game, your teammate's pitching box will be directly across from you. In a 2 player game, if you start throwing from the left side of the board, you'll walk directly across to the other board, and throw back from the right side. Lastly, pick your bags (4 for each team) and get ready to play.



### Playing The Game:

Decide who goes first, then alternate turns throwing bags with your opponent. You throw one bag, then your opponent, then you, then your opponent. Your feet may not go past the front edge of the board. Also, a tossed bag may not touch the ground. If it hits the ground and bounces up on the board, remove it before any other bags are thrown. If it's hanging off the board and touching the ground, remove that as well. When all 8 bags have been tossed to the other side, add up the score (see scoring below). If you earned the most points in that single round, your team will throw first in the next round.

### Scoring:

After all bags have been thrown for that round, add up your score as follows:

- 1 Point - Any bag fully on the board (Half on and half off does not count)
- 3 Points - Any bag that made it through the hole

Each team's points cancel each other out so that only one team can score per round. For example, if you scored 6 points and your opponent scored 2, you will add 4 points to your overall score and your team will throw first in the next round. If you scored 6 points and your opponent scored 6 as well, there will be no points awarded and whoever threw first in the last round will throw first again. A game is won when a team reaches 21 points with a lead of 2 or more points.

Of course, you can play with your own variation of the official rules. For example, some play with the rule that you must reach 21 exactly. If you go over in points, your score is automatically reduced to 11 and play continues. Another variation is to count every point (no negation of points) and see who has the most points at the end of 13 rounds.

### Game Care

- Avoid leaving the assembled targets out in the elements for long periods of time. Excessive sun and/or water exposure will decrease the product's lifespan. In short, pack up the product and store it in its carrying case when not in use.
- These boards are designed to be extremely portable, so standing or walking on the boards will most likely tear the fabric or break the PVC, so don't do it.

### Bean Bag Care

- If your bags get dirty from playing outdoors they can be hand washed with soap and hot water, but be sure to let them air dry.

## Assembly Instructions:

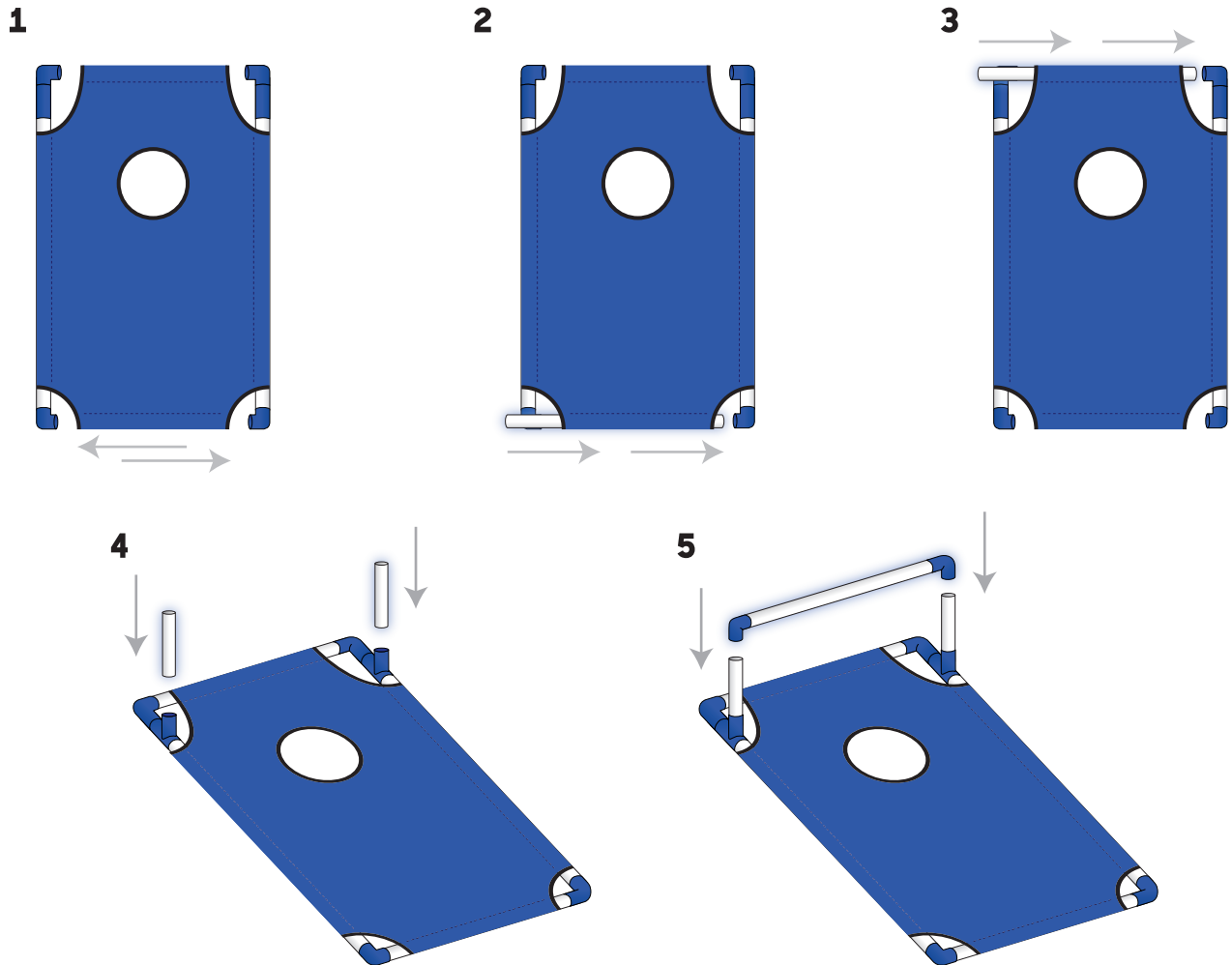
At GoSports®, we pre-assembled as many parts as possible to make the game's setup easy. In the box you will find PVC tubes and connectors to assemble 2 cornhole targets: **One Red** and **One Blue**. Separate the pipes and connectors into 2 piles (red and blue).

Starting with the Red Target:

- 1:** Begin by rolling out the **Pre Assembled Top**.
- 2:** Next insert the **Bottom Support Bar** into the blue connectors.
- 3:** Now insert the **Top Support Bar** into the blue connectors.
- 4:** For the legs, flip the top over and insert the two **Short Pipes** to the two blue connectors.
- 5:** Lastly attach the **Leg Support Bar** to the two legs, securing the cornhole target.

Red Target Setup:

Repeat the same steps for the Blue Target.



## Customer Service:

If you have any questions or concerns regarding your GoSports® Cornhole set, please reach out to us at [info@pandpimports.com](mailto:info@pandpimports.com) and we will get back to you right away. We 100% stand behind our products and want to make sure you get the full enjoyment that you paid for. Enjoy!