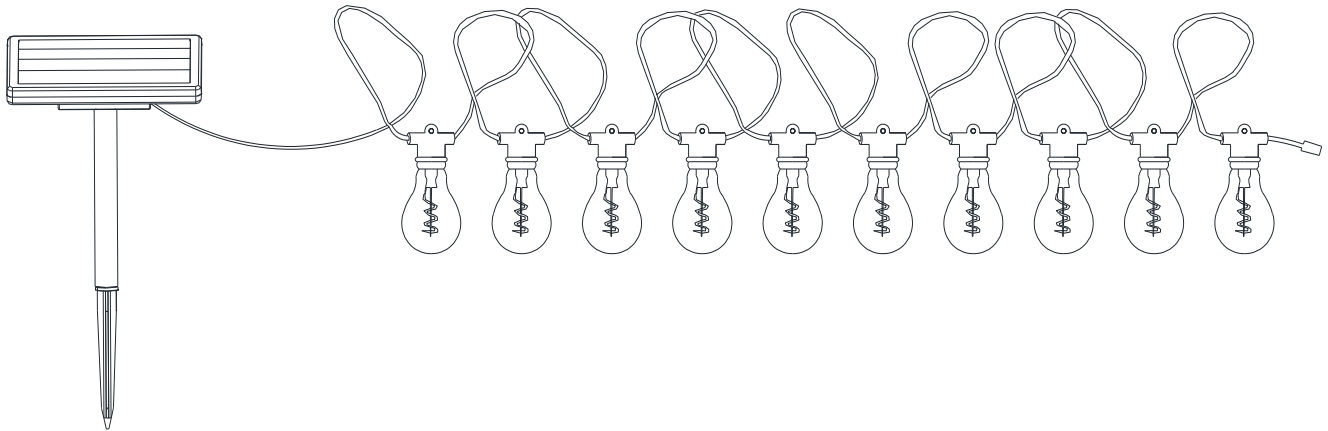


USE AND CARE GUIDE

SOLAR STRING LIGHT WITH 10 SWIRL-FILAMENT LED BULBS



Questions, problems, missing parts? Before returning to the store,
call Customer Service
8 a.m. - 6 p.m., EST, Monday-Friday

1-830-249-1200

CustomerService@Creative-prc.us

Retain this manual for future use

Table of Contents

Table of Contents	2	Tools Required.....	3
Safety Information	2	Hardware Included.....	3
Warranty	2	Package Contents.....	3
What is Covered.....	2	Installation	4
What is Not Covered	2	Maintenance	5
Pre-Installation	3	Care and Cleaning	5
Planning Installation	3	Troubleshooting	5

Safety Information



WARNING: Your solar light may not function in temperatures below -4°F (-20°C) or above 140°F (60°C).



CAUTION: Use a rechargeable battery only. Recycle or dispose of batteries properly.



CAUTION: Do not open, short circuit, or mutilate batteries as injury may occur.

Warranty

ONE YEAR LIMITED WARRANTY

WHAT IS COVERED

The manufacturer warrants this product to be free of defects in material and workmanship for a period of one (1) year from the date of purchase. This warranty only applies to the original consumer purchaser and only to products used in normal use and service. The manufacturer's only obligation and your exclusive remedy, is the repair or replacement of the product at the manufacturer's discretion, provided that the product has not been damaged through misuse, abuse, accident, modification, alternation, neglect, or mishandling. Proof of purchase and evidence of manufacturer's date coding must accompany all warranty claims. Manufacturer's date coding is printed and adhered to each product.

WHAT IS NOT COVERED

This warranty does not apply to products that are found to have been improperly installed, setup, or used in any way not in accordance with the instructions supplied with the product. This warranty does not apply to a failure of the product as a result of an accident, misuse, abuse, negligence, alteration, or faulty installation. Batteries supplied with this product are not included in this warranty. This warranty shall not apply to the finish on any portion of the product, such as surfaces and/or weathering, as this is considered normal wear and tear. The manufacturer does not warrant and specially disclaims any warranty, whether express or implied, of fitness for a particular purpose, other than the warranty contained herein. This warranty does not cover consequential or incidental loss or damage, including but not limited to any labor/expense costs involved in the replacement or repair of the product.

Contact the Customer Service Team at 1-830-249-1200 or CustomerService@Creative-prc.us

Pre-Installation

PLANNING INSTALLATION

Ensure the mounting location for your solar light allows the solar panel to receive direct sunlight. Do not locate the solar panel in shaded areas as this will significantly reduce performance.

Position the solar light such that during evening hours the ambient light from other light sources does not affect the photosensor built into the solar panel. High ambient light levels can cause the lamp to turn off during evening hours.

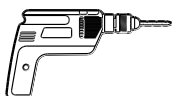


NOTE: The solar light is equipped with a photosensor that turns the unit on at dusk and off at dawn. Ambient light can affect the operation of the photosensor.

TOOLS REQUIRED



Phillips
screwdriver



Electric
drill

HARDWARE INCLUDED



NOTE: Hardware not shown to actual size.



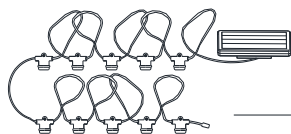
AA



BB

Part	Description	Quantity
AA	Wall mounting screw	2
BB	Wall anchor	2

PACKAGE CONTENTS



A



B



C



D



E



F



G

Part	Description	Quantity
A	Solar string assembly	1
B	Light bulb	10
C	Pole connector	1
D	Pole	1
E	Ground stake	1
F	Wall mounting bracket	1
G	Battery pack (Pre-assembled)	1

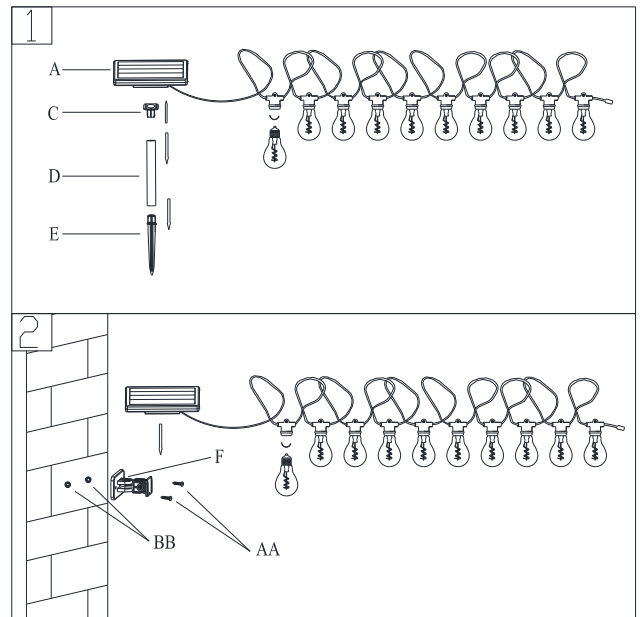
Installation

Installing the solar panel



NOTE: Do not use a hammer. If the ground is hard, use water to soften.

- ❑ To mount the solar box (A) to the ground, insert the ground stake (E) firmly into the ground at the installation location. If the ground is too hard, soak the ground with water to soften the ground or drive a metal rod or screwdriver into the ground to create a hole for the ground stake assembly.
- ❑ Connect the pole (D) to the ground stake (E).
- ❑ Slide the pole connector (C) into the mounting slot on the back of the solar box (A).
- ❑ Connect the installed pole connector (C) on the solar box (A) to the pole (D).
- ❑ To mount the solar box (A) to a wood surface such as fence or wood post. Using the two mounting screws (AA) provided to secure the wall mounting bracket (F) to the mounting surface.
- ❑ To mount the solar box (A) to a wall board or brick walls, drill two 7/32 in. holes into the wall surface and insert the two wall anchors (BB). Using the two mounting screws (AA) provided to secure the wall mounting bracket (F) to the mounting surface.
- ❑ Slide the top plate of the wall mounting bracket (F) into the mounting slot on the back of the solar box (A). Adjust the solar panel to the desired angle to optimize sun exposure.



Installing the string light



IMPORTANT: To reduce the risk of damage to the fragile glass light bulbs, do not install this string light at the location where the light bulb has the possibility of impacting on the hard objects during the strong wind blowing.

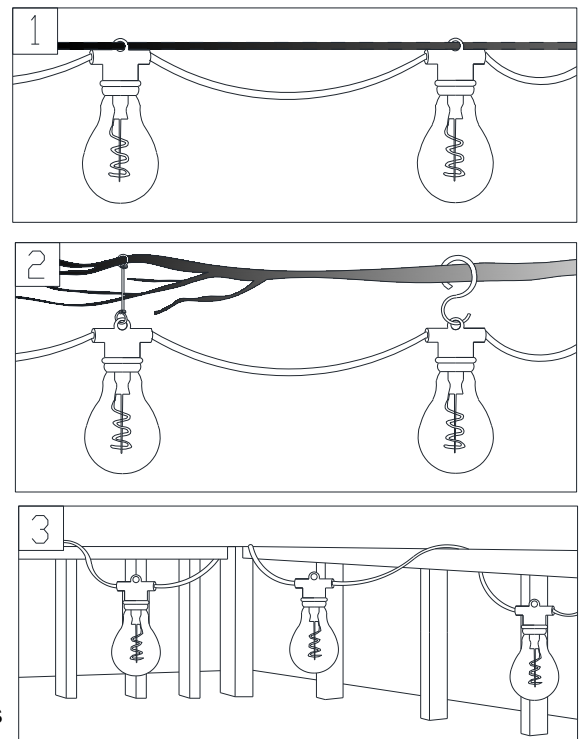


IMPORTANT: Prior to use, set the ON/OFF switch located on the back of the solar box (A) to the ON position and allow it to charge a full sunny day.



NOTE: Replacement light bulb Model 82052-010LB is available at www.creative-prc.us or by emailing CustomerService@Creative-prc.us. Do not buy any random replacement light bulbs and try to use on our string light.

1. To install your string light to a pavilion or the space between trees, feed a guide wire (not included) through the build-in loops of each lamp holder. Secure the guide wire to the pavilion or the trees to hang the light string along the guide wire.
2. To install your string light to a tree or an umbrella, using the flexible string (not included) or the S hook (not included) to hang each lamp holder onto the tree branches or the umbrella skeletons.
3. To install your string light to a deck rail, twist the light string around the railing directly. After you install the light string, screw the light bulbs (B) counterclockwise into the lamp holders.



Maintenance

Replacing the battery



IMPORTANT: Dispose of the battery in accordance with local, state, and federal regulations.



IMPORTANT: When storing any solar product for an extended period of time, remove the batteries. Storing any solar product without regular recharge or removal of batteries could cause permanent damage to the rechargeable batteries.

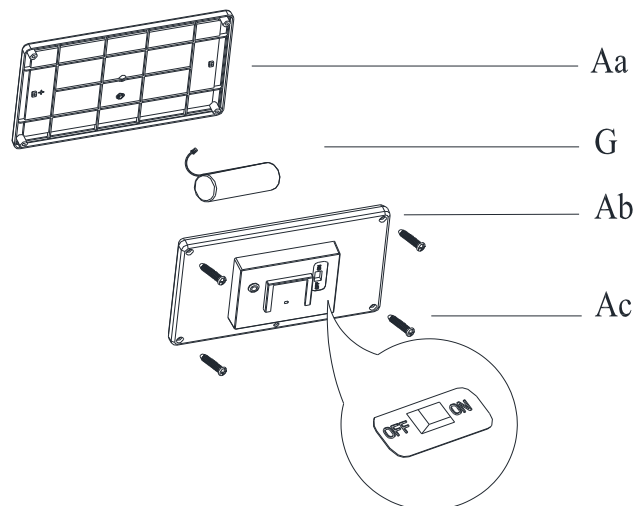


NOTE: To reduce the risk of damage to the electrical connections, exercise caution when separating the back plate (Ab) from the solar box (Aa).



NOTE: Use one 18650 size, 1800mAh, 3.7V Lithium ion rechargeable battery. For best performance, replace with a new Lithium ion rechargeable battery pack annually. Replacement battery pack Model 82052-000RB is available at www.creative-prc.us or by emailing CustomerService@Creative-prc.us..

- ❑ Unscrew the back plate (Ab) from the back of the solar box (Aa) and remove it.
- ❑ Disconnect the wire connection of the battery lead (G) and remove the old battery pack (G) from the battery compartment located on the back plate (Ab). Replace with a new Lithium ion rechargeable battery pack – The recommended replacement battery capacity should be 1800mAh above.
- ❑ Replace the back plate (Ab) with the four screws (Ac).



Care and Cleaning

- ❑ The solar panel should be cleaned periodically with a damp cloth to help maintain optimum performance.
- ❑ Do not use any cleaners with chemicals, solvents, or harsh abrasives.

Troubleshooting

Problem	Possible Cause	Solution
The nightly run time is short.	The battery is not fully charged.	Ensure that the solar light is located in an area where it can receive the maximum amount of full, direct sunlight every day. Keeping the solar panel clean is equally important to ensure the maximum charging performance.
	The battery is reaching the end of its useful life.	Replace the old battery with a new 3.7V Lithium ion rechargeable battery pack.
The solar light does not turn on at night.	The solar light is set to OFF.	Your solar light is equipped with an ON/OFF switch on the back of the solar box. This switch must be set to ON prior to use.
	The solar light is installed close to other light sources, which may keep the solar light from turning on at night automatically.	Relocate the fixture or eliminate other light sources.