

527-20 SELECT WINDOW & DOOR FLASHING TAPE

Window Installation Instructions



The following diagrams illustrate window flashing installation procedures according to Method A from ASTM E2112-07 Standard Practice for Installation of Exterior Windows, Doors and Skylights using Nashua® Select Window & Door Flashing Tape. Method A is jamb flashing applied over the window frame using typical weather resistant barrier materials. Figure 1 is an exploded view showing the flashing sequence.

For additional installation methods, please consult ASTM E2112.

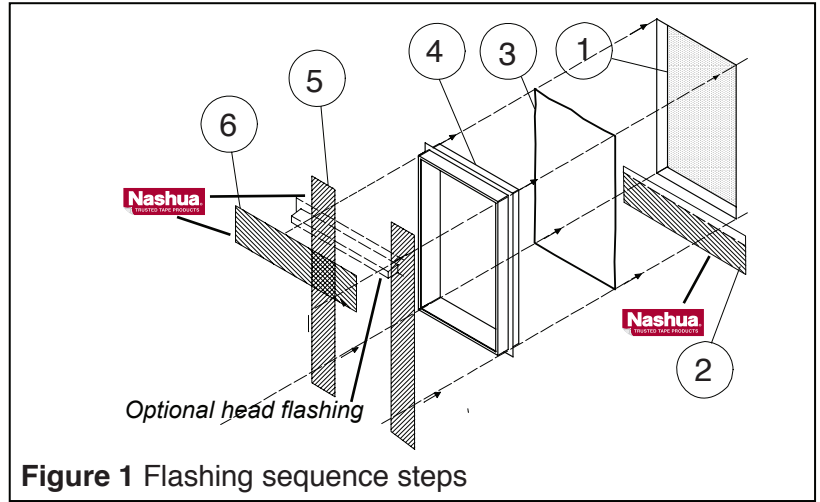


Figure 1 Flashing sequence steps

STEP 1 - PREPARE

Prepare opening and surrounding substrate. Keep substrate surface clean, dry, and smooth around the perimeter (see Figure 2).

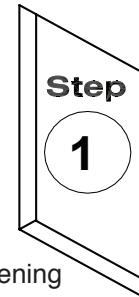


Figure 2 Prepare Rough Opening

STEP 2 - SILL FLASHING

Precut length of Nashua flashing tape to extend a minimum of 6" beyond the rough opening at both jambs. (See Options below). Score the backside of Nashua flashing, cutting lightly through release liner a few inches from top edge. Remove the top portion of the liner but keep bottom portion of release liner on the Nashua flashing until removed later in Step 7.

Options:
Apply split sheet of weather-resistant barrier across sill. Then apply Nashua sill flashing tape over the weather-resistant barrier.



Figure 3 Apply Sill Flashing

Apply Nashua flashing tape across the rough opening of the sill (see Figure 3).

STEP 3 - SEALANT

Apply sealant around perimeter opening or to backside of window fin at top, sides, and bottom (see Figure 4).

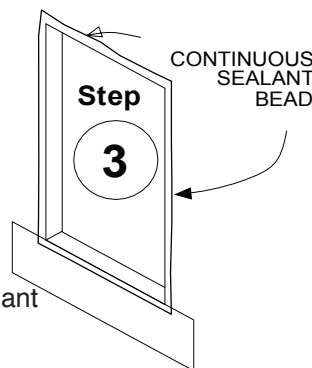


Figure 4 Apply Perimeter Sealant

STEP 4 - INSTALL WINDOW

Install window in opening (see Figure 5).

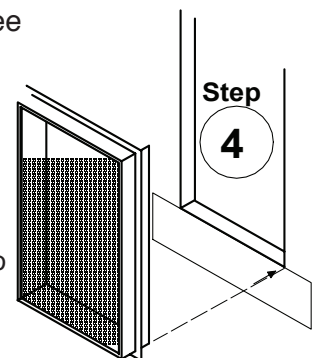


Figure 5 Install window into flashed opening.

Window Installation Instructions

STEP 5 - JAMB FLASHING

Precut Nashua jamb flashing tape to extend a minimum of 6" above and below the rough opening. Peel off release liner and adhere Nashua jamb flashing over the jamb fins and over top of Nashua sill flashing (see Figure 6). A roller or squeegee may be used to help promote adhesion and remove air pockets.

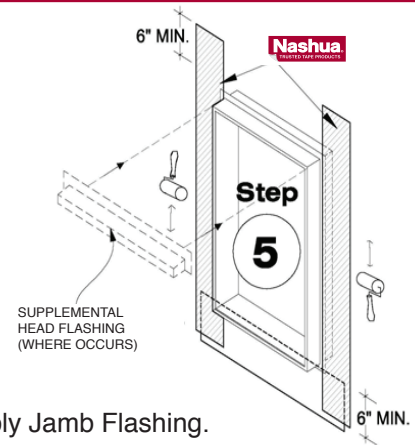


Figure 6 Apply Jamb Flashing.

STEP 6 - HEAD FLASHING

Precut Nashua head flashing tape to extend a minimum of 6" beyond the jambs of the rough opening. Peel off release liner and adhere Nashua head flashing over window fin and substrate. Install supplemental head flashing (where occurs) with a strip of Nashua flashing over the top leg (see Figure 7).

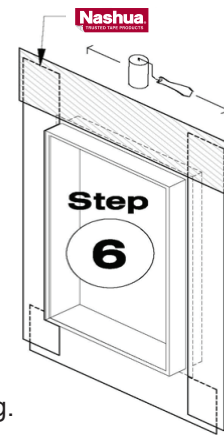


Figure 7 Apply Head Flashing.

STEP 7 - WEATHER BARRIER

Install weather-resistant barrier shingle fashion from bottom of wall to top. Insert weather-resistant barrier under Nashua sill flashing. Peel off remaining release liner from Nashua sill flashing and adhere to weather-resistant barrier. Seal edges of weather-resistant barrier to Nashua flashing along the window jamb and head (see Figure 8).

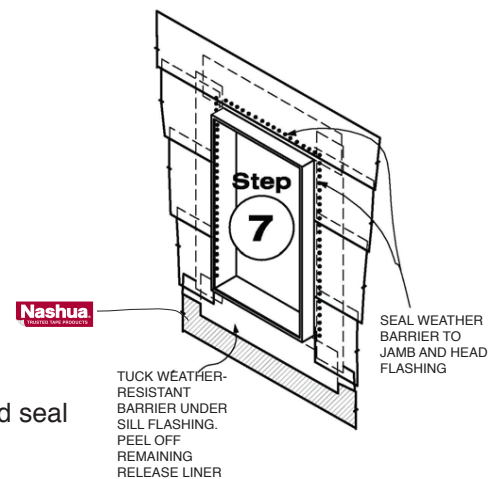


Figure 8 Install weather-resistant barrier and seal around perimeter.

STEP 8 - TRIM/CLAD/SIDE

Install trim and/or exterior wall cladding or siding around perimeter of window. Seal perimeter joints per the recommendations of the cladding and window manufacturers (see Figure 9).

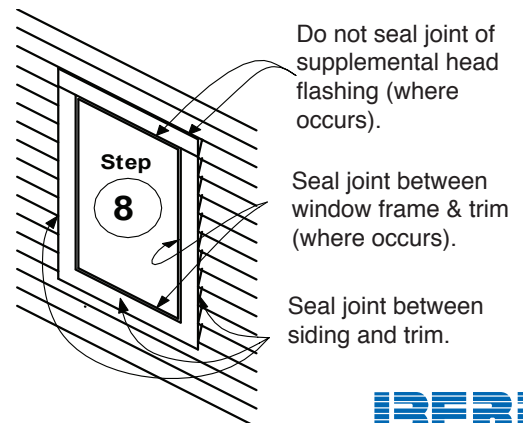


Figure 9 Install cladding.