

An easy way to mask trim

The Scotch-Blue™ painter's tape applicator puts easier masking in the palm of your hand. This innovative tool is designed to quickly and precisely apply tape flush against the wall. Painters of all skill levels are able to mask trim and woodwork quickly, to achieve professional results.

This time saving applicator is pre-loaded with the versatile Scotch-Blue painter's tape for multi-surfaces. The medium-adhesion tape allows it to be left on a surface for up to 14 days and still remove cleanly.



- *Properly clean and dry surfaces before masking. This can help prevent paint seepage.*
- *For the best results, start in the corners of a room and work outward.*
- *To secure any loose ends, press a putty knife or 5-in-1 tool over the tape surface.*

Making your job a whole lot easier.

3M

Construction and Home Improvement Markets Division

3M Center, Building 223-4S-02
St. Paul, MN 55144-1000
1 800 494-3552
www.3M.com

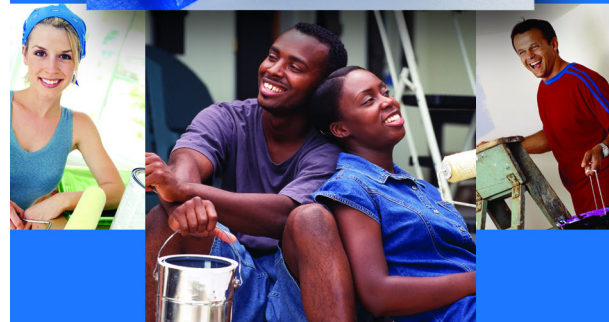
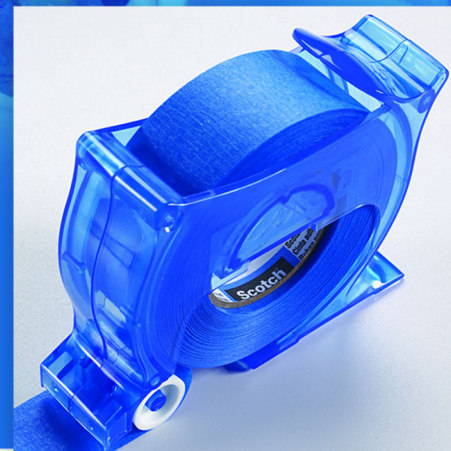


Minimum 10%
Post-Consumer Fiber

3M, Scotch-Blue, the plaid design and the BLUE color of the tape are trademarks of 3M. Scotch is a registered trademark of 3M.
© 3M 2004
70-0710-7831-8

Scotch®

Scotch-Blue™
Painter's Tape Applicator.



An easy way to mask trim

How to use

The compact design of the applicator makes it easy to control. It can be used in either direction, right or left-handed. Follow the steps below to ensure accurate use of the applicator and professional paint lines.



- 1.** The applicator is designed to be held on the outer edges of tool.



- 2.** Pull out 2"-4" of tape. Press tape on trim, and secure with your finger. Hold the applicator flush against the wall.



- 3.** Keep the bottom of the applicator flat as you slide it along the trim. The rollers will press the tape down.



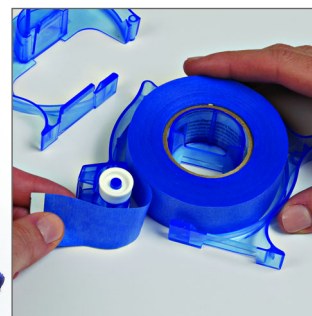
- 4.** Cutting: Tip the applicator and press the metal cutting blade against the tape. Secure the roll of tape with your index finger as you cut.

Easy to refill

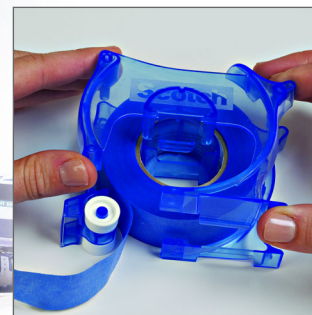
Look for the applicator refill rolls of Scotch-Blue painter's tape next to the applicator in most paint departments. The applicator is easy to refill; follow the instructions below.



- 1.** Depress the latch in the center of the core (look for the arrow on the applicator) pull the sides apart.



- 2.** Pull out two inches of tape. Place the refill roll in the applicator with the sticky side away from the rollers.



- 3.** Align the halves and snap the applicator back together.

