



**GenStone<sup>®</sup>**  
*The Beauty of Stone Made Easy.™*

**BRICK INSTALLATION GUIDE**



## REQUIRED FOR ALL EXTERIOR INSTALLATIONS

- Hand Saw
- Utility Knife
- Tape Measure
- Caulking Gun for a 10 oz Tube
- 1.625" Non-Corrosive Deck Screws
- 2.50" Non Corrosive Deck Screw for Ledgers
- Sandpaper
- PL Adhesive (200 or 300 is recommended)
- Level
- Drill
- Screw Driver Bits
- Framing Square
- Marker
- Gloves
- Safety Goggles and Glasses
- Big Stretch White Caulking

## RECOMMENDED FOR EXTERIOR INSTALLATIONS

- Tyvek HomeWrap
- Circular or Table Saw
- GenStone Color Match Caulking
- GenStone Paint Kits

## REQUIRED FOR OVER BRICK, CONCRETE AND STUCCO

- Tyvek HomeWrap
- Tapcon Fasteners

## REQUIRED FOR INTERIOR OVER DRYWALL

- Hand Saw
- Utility Knife
- Tape Measure
- Caulking Gun for a 10 oz Tube
- 2" Drywall Screws
- Level
- Sandpaper
- Drill
- Screw Driver Bits
- Framing Square
- Marker
- Gloves
- Safety Goggles and Glasses
- Big Stretch White Caulking

*PL Adhesive or any other construction adhesive is not recommended for interior projects*

## RECOMMENDED FOR INTERIOR INSTALLATIONS

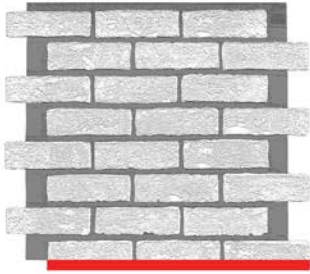
- GenStone Color Match Caulking
- GenStone Paint Kits

## PAINT KITS AND CAULKING

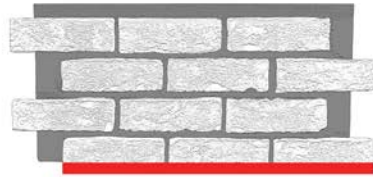
- **COLOR MATCH CAULKING:** One for every 400 SQFT of GenStone installed
- **BIG STRETCH WHITE CAULKING:** One for every 100 SQFT of GenStone installed
- **PAINT KITS:** One for every 400 SQFT of GenStone and one for every color match caulking

## PREPARATION

GenStone Products are designed to be applied to any flat structural substrate that is clean and free of debris. Lay the panels, trim and ledgers on the ground in front of your wall to plan where each piece will be used. The overhanging brick (in red) is always on the bottom. Make sure to stagger the connections throughout the wall to avoid visible seams. Do not install GenStone during periods of extreme temperature swings and always follow the guidelines of local codes.



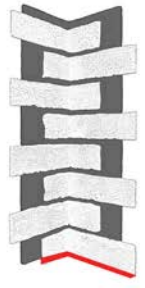
PANEL



HALF PANEL



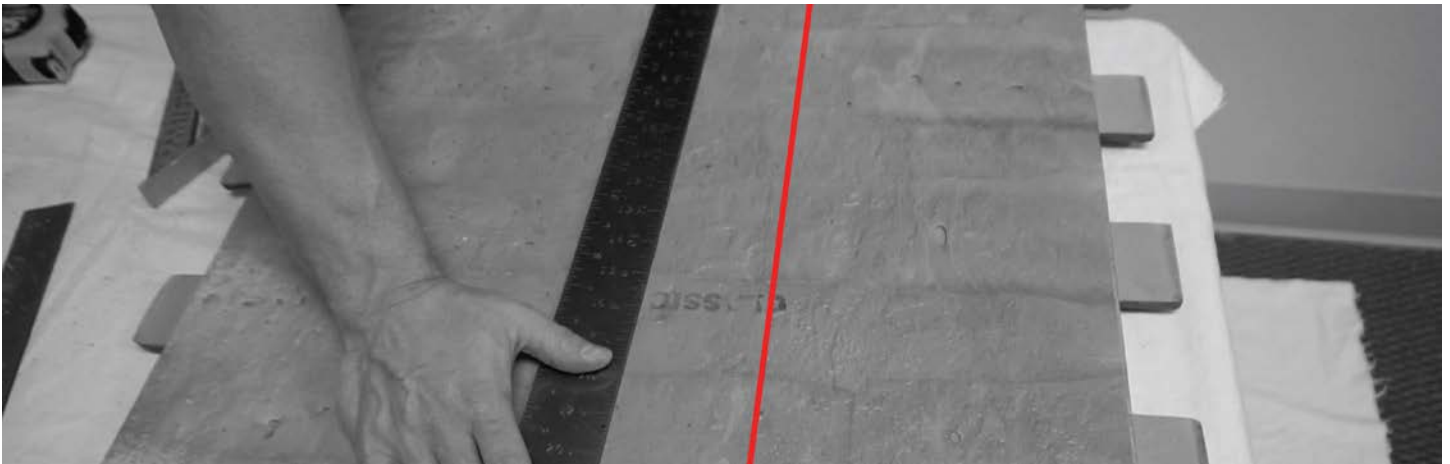
OUTSIDE CORNER



INSIDE CORNER

## MEASURE AND MARK

Working from left to right, slide the next panel into place without attaching it and make a mark for your cut. Use a straight edge and marker to draw a cut line on the back of the panel to follow with your hand or power saw.



## CUTTING TO SIZE

- **CIRCULAR SAW:** Panel flat (back) side up, be sure to protect the face (front) of the panel
- **TABLE OR MITER SAW:** Place the panel front side up before running it through the saw
- **HAND SAW:** Place the panel flat side up, protect the face of the panel while cutting
- **SMALL CUTS:** When making precise cuts to account for hose bibs, electrical boxes, electrical outlets and other installation obstacles, we recommend using a hand saw, utility knife, drywall saw or jig saw. Sandpaper or a rasp can be used to file a small area to size after making the cuts.

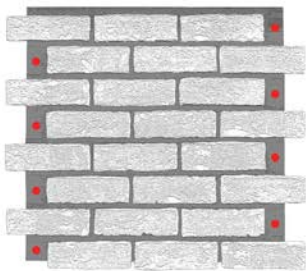
*The manufacturing process can leave strands of foam on the face and at the edge of the panels.*

*These are easily removed by hand or corrected by trimming with a utility knife or sanding.*

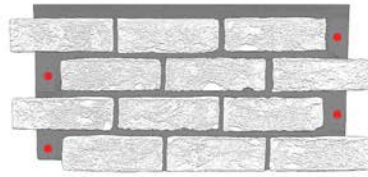
## ATTACHING PANELS AND CORNERS

For exterior projects, start with an "S" pattern of construction adhesive on the back of each Product.

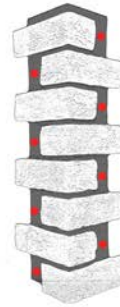
Adhesive is not recommended for interior projects with a drywall substrate. Ensure the Product is level before fastening the Products with screws where the brick tabs from the next panel will conceal the fasteners as shown below. Next, feel throughout the face of the panel for any flex, if you notice any flex between the panel and the substrate, eliminate the flex with a screw in the face of the Product. This fastener can be hidden under a brick and concealed later with color match caulking and paint. The last step before repeating the process with the next Product is to run a bead of Big Stretch caulk where the next brick tab will slide into place to create a water tight connection.



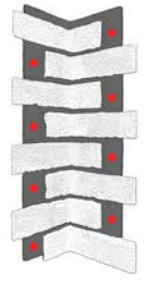
PANEL



HALF PANEL



OUTSIDE CORNER



INSIDE CORNER

- **PANEL AND HALF PANEL:** Centered in each area where the tabs (horizontally overhanging bricks) from the next panel will conceal the fastener.
- **CORNERS:** Centered in each area where the tabs (horizontally overhanging bricks) from the next panel will conceal the fastener.

*After attaching a panel or corner, you may notice it is difficult to slide the next panel into place. To slide the next panel or corner into place, simply loosen the fasteners slightly, slide the panel or corner into place and then tighten the fastener again before sliding the panel or corner into its place.*

## ATTACHING TRIM

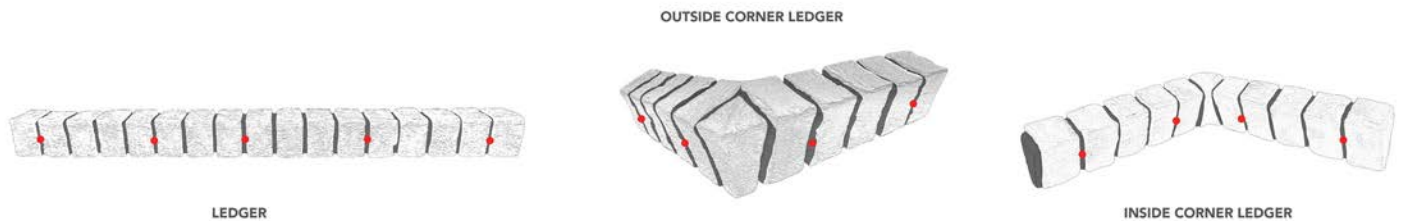
For exterior projects, start with an "S" pattern of construction adhesive on the back of each trim piece. Adhesive is not recommended for interior projects with a drywall substrate. Before attaching the trim, run a bead of Big Stretch caulk along the side of the trim piece where it will come into contact with other GenStone Products or obtrusions such as electrical boxes. Ensure the Product is level before fastening the trim with screws in the face of the trim as outlined below.



TRIM

## ATTACHING LEDGERS

For exterior projects, start with an "S" pattern of construction adhesive on the back of each ledger. Adhesive is not recommended for interior projects with a drywall substrate. Run a bead of Big Stretch caulk in the recessed niche of the ledger where it will connect to the panel. Ensure the ledger is level before fastening it with evenly placed screws in the mortar of the ledger as shown below. After the ledger is secure, create a water tight connection to the substrate where the ledger meets the wall.

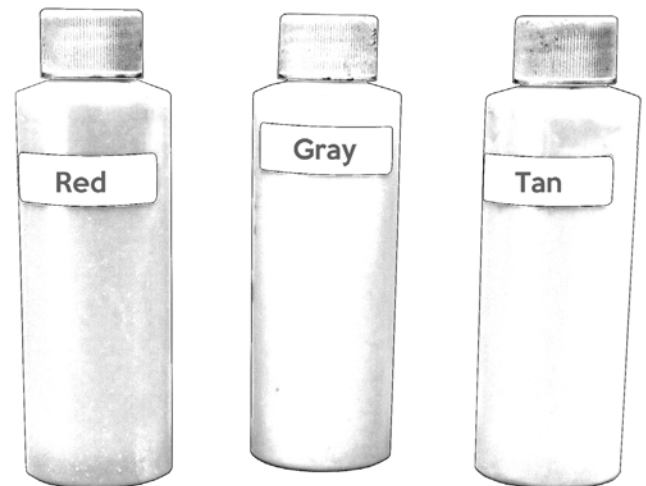


## FINISHING TOUCHES

After all of your panels, ledgers and trim are securely fastened, go back and conceal any fastener holes in the face of the Products with a GenStone color match caulking kit.

### HOW TO TINT THE CAULKING

Follow the step by step video found on the GenStone website ([genstone.com](http://genstone.com)) to tint the color match caulking. The mortar will require only one of the 3 base colors, while the brick pieces require a combination of all 3 paints provided in the kit. For larger projects, separate color match caulking kits are suggested for the brick and mortar.



### USING A PAINT KIT TO BLEND THE CAULKING

After concealing the fastener holes with the color match caulking, wait for the caulking to dry before painting the caulk. We recommend mixing a combination of the 3 paint colors provided in a separate paper or plastic bowls, one for brick touch ups and one for mortar touch ups. The paint is intended to create a perfect blend between the colors around the fastener holes you concealed and the surrounding colors of the Products.

### PAINTING EXPOSED UNPAINTED RAW MATERIAL

Any exposed raw material must be painted thoroughly. Unpainted material will discolor when exposed to sunlight for an extended period of time. You may find areas where raw material is exposed to sunlight where you have cut the GenStone Products.