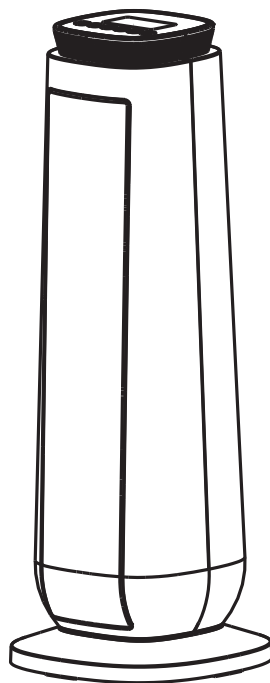


SPT[®]

SH-1515

CERAMIC TOWER HEATER



**PLEASE READ AND SAVE THESE
INSTRUCTIONS**

IMPORTANT INSTRUCTIONS

PLEASE READ AND SAVE THESE IMPORTANT SAFETY INSTRUCTIONS

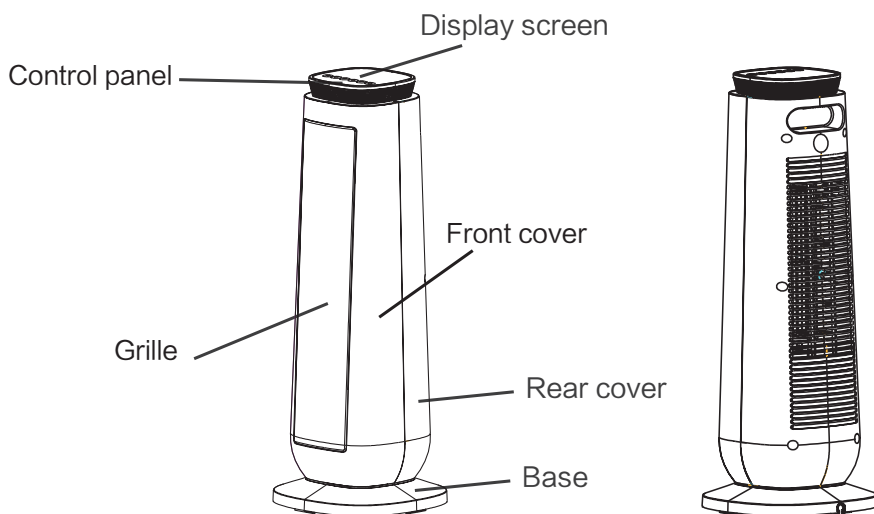
When using electrical appliances, basic precautions should always be followed to reduce the risk of fire, electric shock, and injury to persons, including the following:

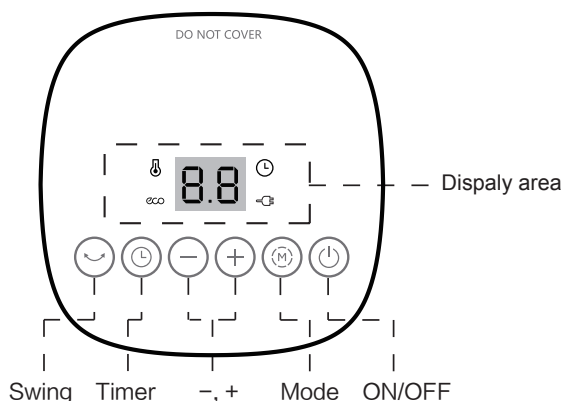
1. Read all instructions before using heater.
2. This heater is hot when in use. To avoid burns, do not let bare skin touch hot surface. If provided, always use handles when moving this heater. Keep combustible materials such as furniture, pillows, bedding, papers, clothes and curtains at least 3 feet (0.9m) from the front of the heater and keep them away from the sides and rear.
3. Extreme caution is necessary when any heater is used by or near children and whenever the heater is left operating unattended.
4. Always unplug the heater when not in use.
5. Do not operate any heater with a damaged cord/plug, after heater malfunctions, or has been dropped or damaged in any manner. Discard heater or return heater to authorized service facility for examination/repairs.
6. Do not use the heater outdoors.
7. The heater is not intended for use in spaces with high humidity (e.g. bathrooms and laundry rooms). Do not place heaters near any source of water.
8. Do not run cord under carpeting. Do not cover cord with throw rugs, runners, or similar coverings. Do not route cord under furniture or appliances. Arrange cord away from traffic area and where it will not be tripped over.
9. **CAUTION:** This appliance has a polarized plug (one blade is wider than the other). To reduce the risk of shock, this plug is intended to fit only one way in a polarized outlet. If the plug does not fit fully in the outlet, reverse the plug. If it still does not fit, contact a qualified electrician. **DO NOT** attempt to **BYPASS** this safety feature. To do so could result in an electric shock hazard.
10. This heater draws 12.5 amps during operation. To prevent overloading a circuit, do not plug the heater into a circuit that already has other appliances working.
11. **CAUTION:** It is normal for the plug to feel warm to the touch; however, a loose fit between the AC outlet (receptacle) and plug may cause overheating and distortion of the plug. Contact a qualified electrician to replace loose or worn outlet.

12. To disconnect the heater, first turn controls to off, then remove plug from outlet. Never pull by the cord.
13. Do not insert or allow foreign objects to enter any ventilation or exhaust opening as this may cause an electric shock or fire, or damage the heater.
14. To prevent a possible fire, do not block air intakes or exhaust in any manner. Do not use on soft surface, like a bed, where openings may become blocked.
15. A heater has hot and arcing or sparking parts inside. Do not use it in the areas where gasoline, paint, or flammable liquids are used or stored.
16. Use this heater only as described in this manual. Any other use not recommended by the manufacturer may cause fire, electric shock, or injury to persons.
17. **CAUTION:** Always plug heaters directly into a wall outlet/receptacle. Never use with an extension cord or reloadable power tap (outlet/power strip).
18. The output of this heater may vary and its temperature may become intense enough to burn exposed skin. Use of this heater is not recommended for persons with reduced sensitivity to heat or an inability to react to avoid burns.

19. **“SAVE THESE INSTRUCTIONS”**

PART FIGURE






OPERATING INSTRUCTION

Check before turning on the appliance

1. Check if the power cord is under good condition.
2. The product adopts 120V AC power supply, before use, please confirm if the rated current of the power socket meets the local requirements with safe grounding device, otherwise, please replace it with the qualified socket.

Start the machine

Plug the unit into a grounded 120V outlet, the power light"  "on , press the ON/OFF key (or press the ON/OFF key of the remote controller) for start, the machine supplies air at high power after start, the digital screen displays "HI".

Mode setting

Repeatedly press the "Function" key so that the heater switches in the order of "HIGH mode - LOW mode - AUTO mode ".

Temperature setting

In the AUTO mode of the machine, press "+" or "-" can set the temperature value, set the range of 40-95°F. When the room temperature exceeds the set temperature at 4°F, the machine stops working, and stay in the standby state. When the temperature is lower than the set temperature, the machine starts to heat up again.

Timing function

Timing stop

When the heater is turned on, press the TIMER key to enter the timing stop state (within 0-8 hours), then press the "+" key to increase the timing stop time , and press the "-" key to decrease the timing stop time.

Timing start

When the electric heater is in the standby mode, press the TIMER key to enter the reservation start mode (within 0-8 hours), then press the "+" key to increase the reservation start time , and press the "-" key to decrease the reservation start time.

Swing function

The electric heater in operation mode, press the "swing" key to open the swing function, pressing this button to turn off the swing function; when the electric heater stops heating function, the wind swinging function also stop.

Temperature sensor short circuit, open circuit protection function

No matter in what mode, the temperature sensor short circuit or open circuit will cause the display to flicker “E1” or “E2” along with the buzzer ringing 10 times. All key operations will be invalid.

Safety protection

When the unit senses the temperature to be above 122F, an auto shut off protection mode is initiated. The screen will display “FF” and flash 75 times once per second. The unit can only be reactivated by powering down the entire machine and restarting.







AUTO energy saving function

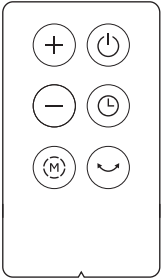
The AUTO function will allow the heater to determine the most energy efficient mode of achieving the desired temperature. This will provide the most energy savings.

Remote controller

The remote-control unit has the same key functions as the control panel on the main unit.

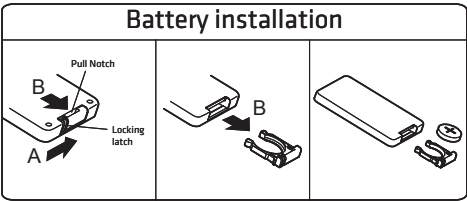
Remote control

	ON/OFF button
	Mode button
	Temperature / Timer increase
	Temperature / Timer decrease
	Timer button
	Swing button



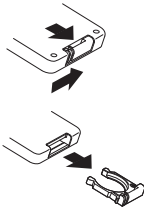
BATTERIES INSTRUCTIONS (included)

1. Please push locking latch in the direction of Arrow A, and pull out the pull notch in the direction of Arrow B at the same time.
2. Use 1 "CR2032" lithium battery (included)
3. Insert the batteries, making sure that the positive terminals are facing the proper way.
4. Replace the cover.



BATTERY WARNING

1. Do not dispose of batteries in fire, batteries may explode or leak.
2. Do not mix old and new batteries.
3. Do not mix alkaline, standard (carbon-zinc) or rechargeable (nickel-cadmium) batteries.
4. Non-rechargeable batteries are not to be recharged.
5. Batteries are to be inserted with the correct polarity.
6. Exhausted batteries are to be removed from the product.
7. The batteries must be removed from the remote controller before it is scrapped and that they are disposed of safely.



MAIN TECHNOLOGY SPECIFICATIONS

Power supply: AC 120V ~ 60Hz

MODEL	POWER REGULATION RANGE (W)			
	LOW	HIGH	LOW OSC	HIGH OSC
SH-1515	900	1500	900	1500

Troubleshooting

Before contacting the manufacturer, the following are solutions to common problems. However, if the solutions below do not solve the issue, it is recommended to contact the manufacturer's customer service for further assistance.

Problem	Possible Cause	Solution
After the power is engaged,the machine does not work.	The plug may not be plugged well.	Check whether the plug is properly inserted into the receptacle.
The machine suddenly stops during heating.	The temperature exceeds the threshold of the thermal cut- off.	Pull off the plug manually, and then insert it into the receptacle again when the machine is cooled.

CLEANING AND STORAGE

It is recommended that the heater be cleaned at least one time during the operating season in order to provide the optimum level of performance. **ALWAYS TURN THE POWER SWITCH OFF AND UNPLUG THE HEATER BEFORE CLEANING.** Be sure to save the box for off-season storage.

- Turn the heater “**OFF**”, unplug it and wait for the heater to cool down.
- Use a dry cloth to clean only external surfaces of the heater.
- Do not use any cleaning agents or detergents.
- Never immerse the heater in water.
- Pack the heater in the original carton and store it in a cool and dry place.

Your Guarantee

If this product is found to be faulty as a result of faulty materials or workmanship within one year from date of purchase, it will be repaired free of charge.

This guarantee is subject to the following terms:

- Sunpentown must be notified of the fault.
- Proof of purchase must be presented to Sunpentown's nominated representative.
- The warranty will be void if the product is modified, misused or repaired by an unauthorized person.
- The warranty after repair will not be extended beyond the original one-year period.
- All replacement parts will be new or reconditioned.
- Parts, which are replaced, become the property of Sunpentown.
- The warranty applies for the use of the product in the USA only.

What is NOT COVERED:

- Warranty does not include freight charges.
- Damage due to installation error, product abuse and/or misuse.
- Incidental or consequential damage caused by possible defects with this product.
- Labor cost incurred for the installation and/or removal of a possible defective unit.
- Damage to product caused by improper power supply voltage, accident, fire, floods or acts of nature.
- Failure of product resulting from unauthorized modifications to the product.
- Improper installation or failure to perform the necessary maintenance.
- Normal wear and tear on parts or replacement of parts designed to be replaced.
- Damage to personal property from use of product.
- Replacement or repair of household fuses, circuit breakers, wiring or plumbing.

This GUARANTEE is in addition to your Statutory Rights

SUNPENTOWN INTERNATIONAL INC.
14625 Clark Ave. City of Industry, CA 91745
Tel: 800-330-0388
service@sunpentown.com
www.sunpentown.com