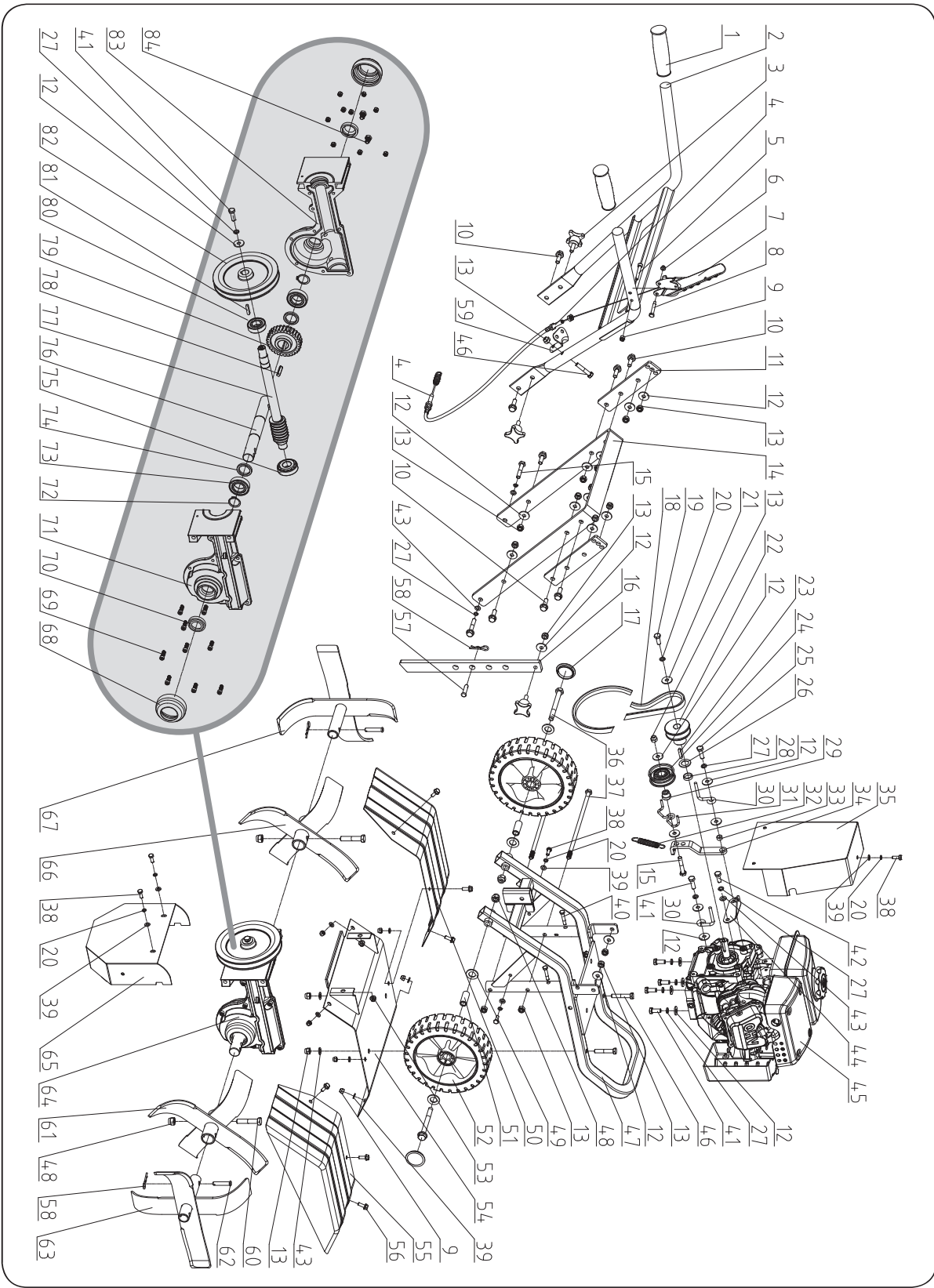


PARTS DIAGRAM



PARTS LIST

No.	Description	QTY.	No.	Description	QTY.
1	Handlebar Grip	2	36	Bolt M10×100	2
2	Upper Handlebar	1	37	Bolt M8×235	2
3	Adjusting Hand Knob M8×25	3	38	Bolt M6×16	5
4	Tensioning Pulley Cable	1	39	Flat Washer 6	11
5	Inner Hexangular Screw M6×35	1	40	Bolt M6×40	2
6	Flange Lock Nut M5	1	41	Bolt M8×25	6
7	Drive Control Lever	1	42	Bolt M8×20	1
8	Lever Bolt	1	43	Flat Washer 8	7
9	Lock Nut M6	16	44	Belt Guard Mount Bracket	1
10	Bolt M8×25	8	45	Gasoline Engine 156F	1
11	Handlebar Adjusting Plate	2	46	Bolt M8×40	3
12	Big Flat Washer 8	23	47	Frame Weldment	1
13	Lock Nut M8	15	48	Lock Nut M10	4
14	Lower Handlebar	1	49	Big Flat Washer 10	4
15	Bolt M8×45	3	50	Tine Shield - Left	1
16	Depth Stake	1	51	Wheel Bushing	2
17	Wheel Cap (Black)	2	52	Wheel (Black)	2
18	Belt 4LXP85	1	53	Lock Nut M6	2
19	Bolt M6×20	1	54	Tine Shield -Middle	1
20	Spring Washer 6	6	55	Tine Shield - Right	1
21	Large Flat Washer 6	1	56	Bolt M6×16	6
22	Small Pulley	1	57	Pin B8×32	1
23	Flat Key A 5×5×30	1	58	Clip 2.5	3
24	Tensioning Pulley	1	59	Cable Fixing Plate	1
25	Bolt M8×30	1	60	Bolt M10×50	2
26	Washer 16	1	61	Inner Tine - Right	1
27	Spring Washer 8	11	62	Pin 8×45	2
28	Lock Ring	1	63	Outer Tine - Right	1
29	Bearing Bushing	1	64	Transmission Case	1
30	Belt Guide Rod 1	2	65	Lower Belt Guard	1
31	Belt Guide Rod 2	1	66	Inner Tine - Left	1
32	Return Spring	1	67	Outer Tine - Left	1
33	Slide Bushing	1	68	Bearing Sheath	2
34	Tensioning Pulley Swing Arm	1	69	Screw M6×25	9
35	Upper Belt Guard	1	70	Oil Seal FB25×40×8	2

No.	Description	QTY.
71	Transmission Case - Right	1
72	Snap Ring 25	2
73	Bearing 6005-2Z(HCH)	2
74	Worm Wheel Bushing	2
75	Bearing 30204(HCH)	1
76	Worm Axis	1
77	Worm Rod	1

No.	Description	QTY.
78	Flat Key A6×28	1
79	Worm Wheel	1
80	Bearing 6004-2RS	1
81	Flat Key 5×5×20	1
82	Big Pulley	1
83	Transmission Case - Left	1
84	Bolt M8×12	2