

SPECIFICATIONS AND MODELS

DESCRIPTION	SPECIFICATIONS	DESCRIPTION	SPECIFICATIONS
Pulling Capacity	(4) #10 Wires	Height	17.7"
Interchangeable Drums	Yes	Weight	18.65 lbs (2873B) 15.65 lbs (2873A) 6.4 lbs (2873)
Length	13.2"		
Width	5.5"		



M18 FUEL™ ANGLER™ 120' Steel Pulling Fish Tape Kit 2873A-22
Includes: 2873-20 ANGLER™ Pulling Fish Tape Powered Base, 48-44-5176 ANGLER™ 120' x 1/8" Steel Pulling Fish Tape Drum, (2) M18™ REDLITHIUM™ CP2.0 Battery Packs and M18™ & M12™ Multi-Voltage Charger.



M18 FUEL™ ANGLER™ Pulling Fish Tape Powered Base (Tool-Only) 2873-20
Includes: 2873-20 ANGLER™ Pulling Fish Tape Powered Base. Drum, Battery and Charger not included.

COMPATIBLE DRUMS



M18 FUEL™ ANGLER™ 120' x 1/8" Steel Pulling Fish Tape Drum 48-44-5176

M18 FUEL™ ANGLER™ 240' x 1/8" Steel Pulling Fish Tape Drum 48-44-5178



M18 FUEL™ ANGLER™ 100' Non-Conductive Polyester Pulling Fish Tape Drum 48-44-5195

M18 FUEL™ ANGLER™ 200' Non-Conductive Polyester Pulling Fish Tape Drum 48-44-5197



PERFORMANCE DRIVEN
TRADE FOCUSED
SYSTEM WIDE



milwaukeetool.com

FUEL-ANGLER-SS
DDR_19M113547 9/19

© 2019 Milwaukee Tool

NEW



M18 FUEL™
DRIVEN TO OUTPERFORM.™



ANGLER™
INTERCHANGEABLE
FISH TAPE SYSTEM

POWER TO PULL
200' THROUGH
360° BENDS

AUTO-RUN™
POWERED
FEED & RETRACT

NO MESS,
ANTI-BINDING

ANGLER™
Pulling Fish Tape
2873A-22, 2873B-22, 2873-20

REDLITHIUM™
CP2.0



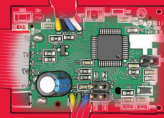
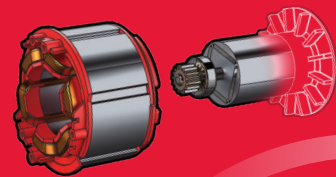
DRIVEN TO OUTPERFORM.™

M18 FUEL™ is engineered for the most demanding tradesmen in the world. Delivering unrivaled performance in a compact structure, all M18 FUEL™ products feature three MILWAUKEE® exclusive innovations — the POWERSTATE™ Brushless Motor, REDLITHIUM™ Battery Pack and REDLINK PLUS™ Intelligence Hardware and Software — that deliver unmatched power, run-time and durability. Simply put, the M18 FUEL™ ANGLER™ Pulling Fish Tape revolutionizes the way wire gets installed as the first battery powered fish tape solution. The POWERSTATE™ Brushless Motor provides the ability to pull wire through the longest and toughest runs. This, combined with AUTO-RUN™ Powered Feed and Retract eliminates manual operation and repetitive motion for less user fatigue. The self-contained drum design automatically reels the tape back into the drum for a cleaner job site and longer lasting tape.

M18 FUEL

1 POWERSTATE™ BRUSHLESS MOTOR

- MILWAUKEE® Designed and Built Brushless Motor
- Outperforms All Leading Competitors



2 REDLINK PLUS™ INTELLIGENCE

- Most Advanced Electronic System on the Market for Maximum Performance
- Total System Communication with Overload Protection Increases Tool Life

3 REDLITHIUM™ CP2.0 BATTERY PACK

- Most Durable Pack on the Market
- Over 2X More Recharges than Leading Competitor
- Fuel Gauge Displays Remaining Charge
- Operates Below -18°C / 0°F



ANGLER™
INTERCHANGEABLE
FISH TAPE SYSTEM

POWER TO PULL
200' THROUGH
360° BENDS

AUTO-RUN™
POWERED
FEED & RETRACT

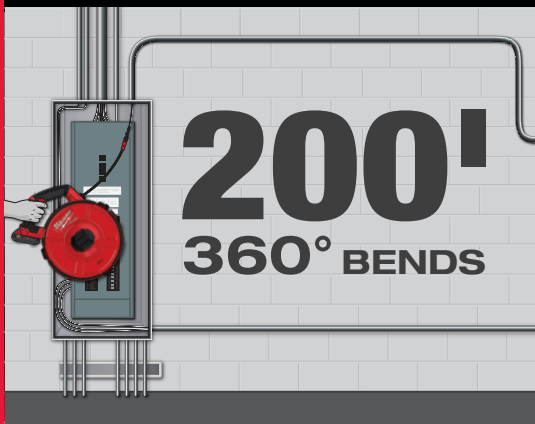
**NO MESS,
ANTI-BINDING**

ANGLER™ PULLING FISH TAPE

M18 FUEL

POWER TO PULL 200' THROUGH 360° BENDS

COMPLETE THE TOUGHEST RUNS



- Completes the Toughest Runs
- Compatible with 4 Interchangeable Drums up to 240' Steel & 200' Non-Conductive



AUTO-RUN™ POWERED FEED & RETRACT

REDUCES FATIGUE



- Less Muscle Effort, Reduced User Fatigue
- Tape Retracts into Drum for a Cleaner Jobsite
- Variable Speed Trigger for Maximum Control



NO MESS, ANTI-BINDING

LONGEST LASTING

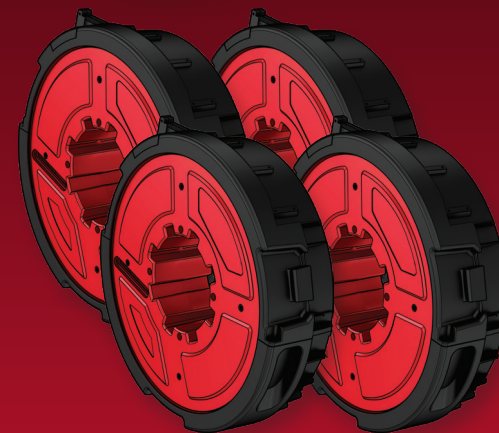
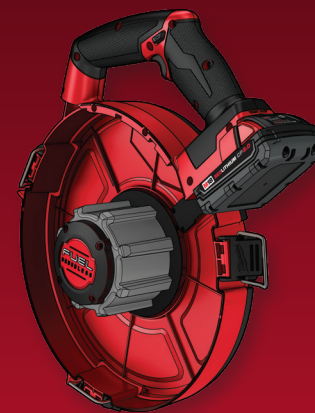
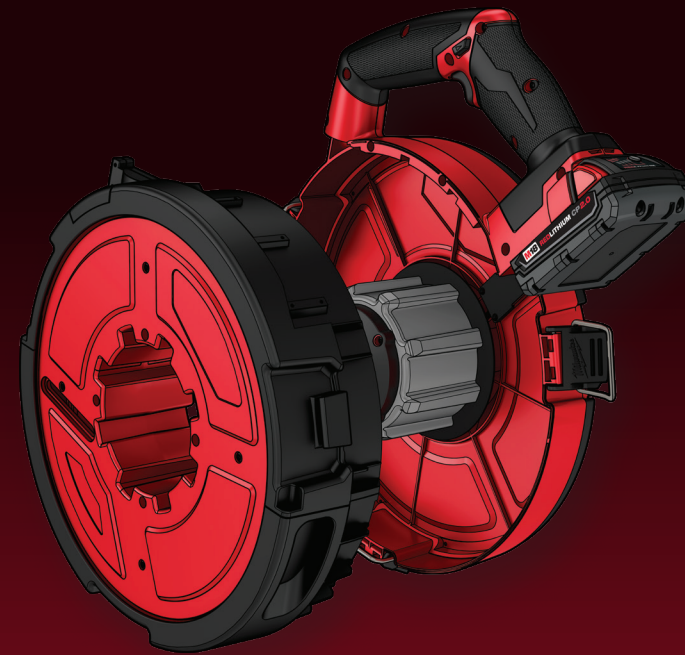


- Proprietary Drum Design for Smoother Feeding and Retracting
- Durable Powered Base and Replaceable Drums Deliver the Longest Lasting Solution



ANGLER™ INTERCHANGEABLE FISH TAPE SYSTEM

Interchange drums on a single powered base to easily swap between different sizes and types.



POWERED BASE

M18 FUEL™ ANGLER™ PULLING FISH TAPE POWERED BASE

- POWERSTATE™ Brushless Motor
- REDLINK PLUS™ Intelligence
- REDLITHIUM™ CP2.0 Battery Pack

COMPATIBLE DRUMS

STEEL
120' x 1/8"
48-44-5176
240' x 1/8"
48-44-5178

NON-CONDUCTIVE
100'
48-44-5195
200'
48-44-5197

INCLUDED IN 2873-20, 2873A-22, 2873B-22



WATCH IT
IN ACTION

