




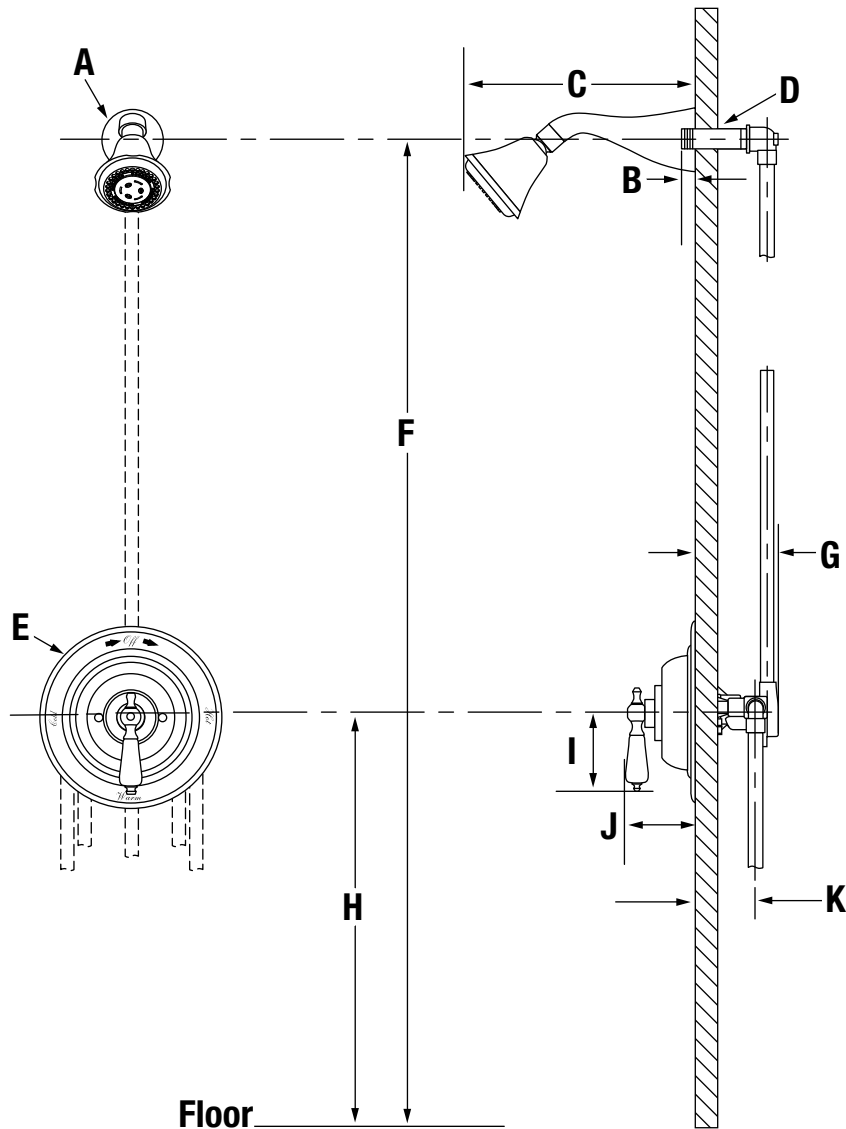


4400-TRM, 4401-TRM Carrington™ Trim Series Operation & Maintenance Manual

| Model Numbers | | Specifications |
|--|---|---|
| <input type="checkbox"/> 4400-TRM | <i>Valve Trim</i> | Shower trim includes shower escutcheon kit and 3 mode showerhead with standard 2.5 gpm (9.5 L/min) flow restrictor. Valve trim includes shower escutcheon kit only. Components made from metal and nonmetallic materials plated in standard polished chrome finish. |
| <input type="checkbox"/> 4401-TRM | <i>Shower Trim</i> | |
| Modifications | | Compliance |
| <input type="checkbox"/> -1.5 |  1.5 gpm (5.7 L/min) flow restrictor | -ASME A112.18.1; CSA B125.1 |
| <input type="checkbox"/> -2.0 |  2.0 gpm (7.6 L/min) flow restrictor | |
| <input type="checkbox"/> -CRP | Cross handle in place of white insert handle | <div>  </div> |
| <input type="checkbox"/> -LAM | Metal finish insert handle | |
| <input type="checkbox"/> -STN | Satin nickel finish | |
| | | |
| | | Warranty |
| | | Limited Lifetime - to the original end purchaser in consumer installations. 5 Years - for commercial installations. Refer to www.symmons.com/warranty for complete warranty information. |

Note: Append appropriate -suffix to model number.

Dimensions

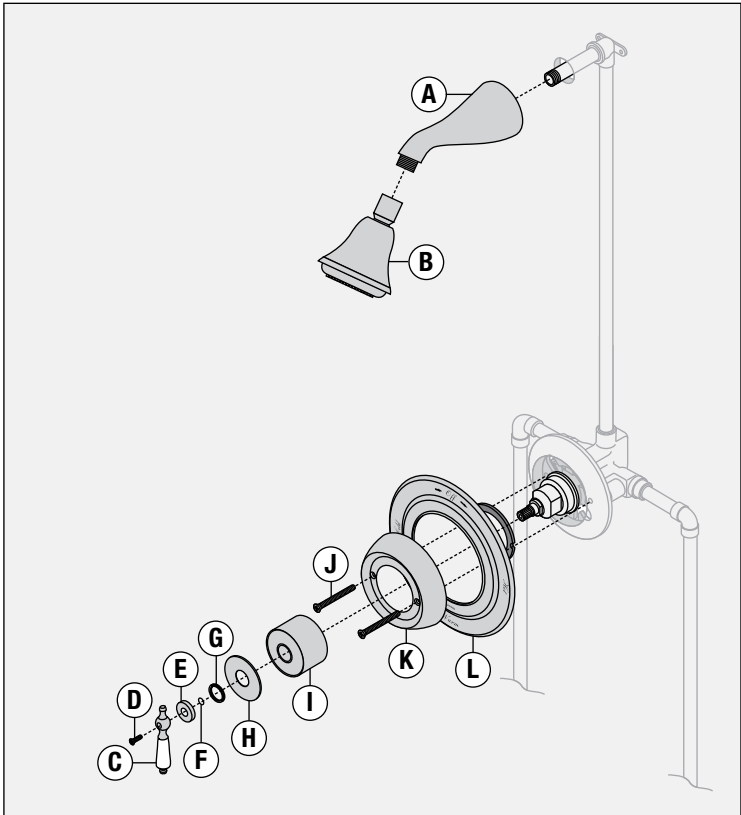


| Measurements | |
|--------------|---|
| A | Ø 2 5/8", 67 mm |
| B | 1/2", 13 mm |
| C | 9 1/4", 235 mm |
| D | Male 1/2" I.P.S. thread must protrude 1/2" from finished wall |
| E | Ø 7 1/2", 191 mm |
| F | 77", 1956 mm |
| G | 3 1/8", 79 mm |
| H | 42", 1067 mm |
| I | 3 1/8", 79 mm |
| J | 2 5/8", 67 mm |
| K | (Rough in) 2" ± 1/2", 51 mm ± 13 mm |

Notes:

- 1) All dimensions measured from nominal rough-in (see K as reference).
- 2) Dimensions are subject to change without notice.

Parts Breakdown



| Replacement Parts | | |
|-------------------|---|-------------|
| Item | Description | Part Number |
| A | Shower Arm | 304 |
| B | Showerhead | 442SH |
| C D E F | Handle Set Screw Flange O-ring | DF-28-LPO |
| G | Lock Nut | T-20-PL |
| H | Washer | 40B-PL |
| I | Dome Cover | DF-11 |
| J K | Mounting Screws Shower Escutcheon | DF-14 |
| L | Escutcheon Plate | 7.5-ETCH |

- Notes:**
- 1) Append -STN to part number for satin nickel finish.
 - 2) Append -1.5 or -2.0 to showerhead for low flow.

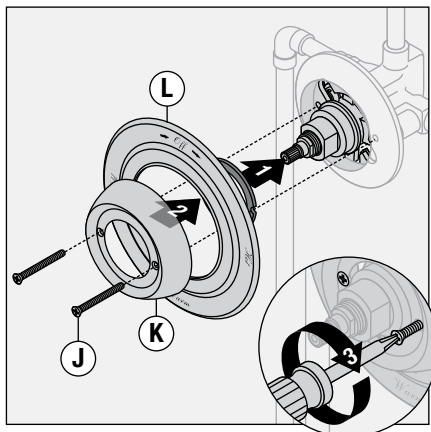
| Required for Installation | |
|---------------------------|--|
| Adjustable wrench | |
| Phillips head screwdriver | |
| Plumber tape | |

Installation

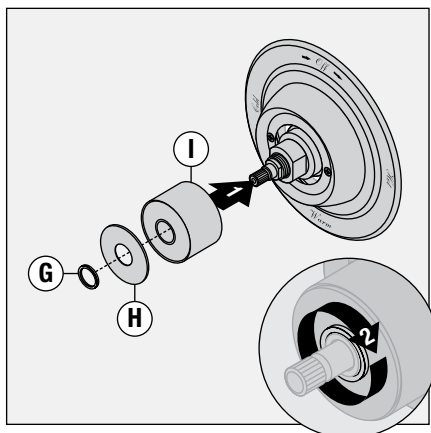
Note:

For valve body installation, please see valve body installation guide.

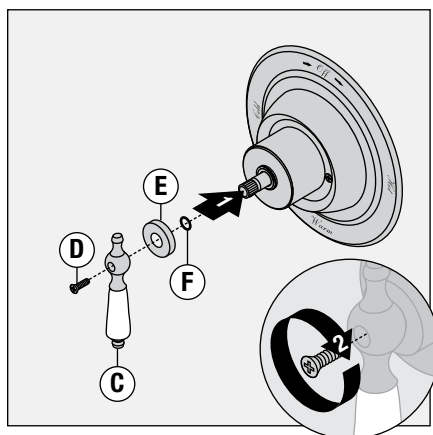
- 1) Install shower escutcheon plate (L) and shower escutcheon (K) to shower valve. Secure with two screws (J).



- 2) Install dome cover (I) and washer (H) to valve and secure with lock nut (G).

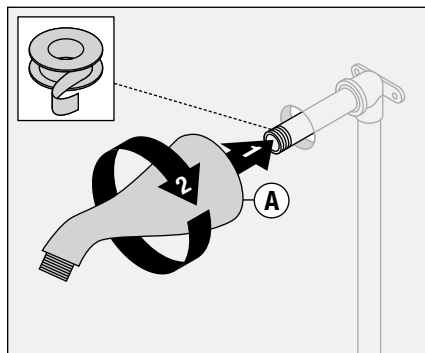


- 3) Install o-ring (F), flange (E), and handle (C) to valve and secure with screw (D).

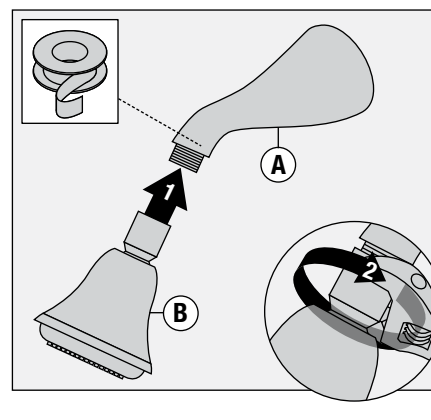


Note: Handle should be facing the 6 o'clock position.

- 4) Install shower arm (A) to pipe fitting. Turn clockwise to secure.



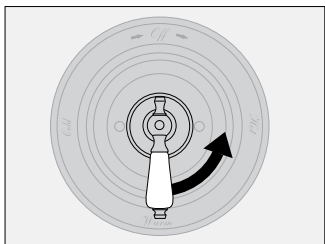
- 5) Install showerhead (B) to shower arm (A) turning clockwise to tighten.



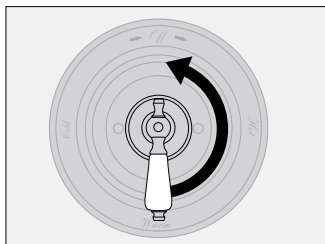
Operation

Temperature Control

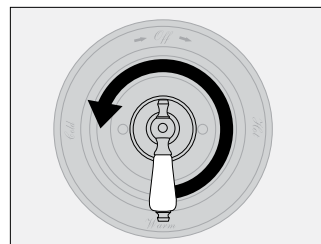
- 1) Turn shower handle counterclockwise approximately 1/4 turn to put valve in cold position.



- 2) Turn shower handle counterclockwise approximately 1/2 turn to put valve in warm position.



- 3) Turn shower handle counterclockwise approximately 3/4 turn to put valve in hot position.



Care and Cleaning

- 1) Clean finished trim area with a soft cloth using mild soap and water or a non-abrasive cleaner and then quickly rinse with water.

Troubleshooting Chart

| Problem | Cause | Solution |
|---------------------|--|---|
| Finish is spotting. | Elements in water supply may cause water staining on finish. | Clean finished trim area with a soft cloth using mild soap and water or a non-abrasive cleaner and then quickly rinse with water. |