

DESCRIPTION OF PRODUCT PARTS

Parts list (See Fig. 1)

1. Flat nozzle
2. Speed adjustment button
3. Turbo button
4. Speed/Cruiser lock lever
5. Trigger switch
6. Battery pack release button
7. Air inlet
8. Main handle
9. Upper tube
10. Lower round nozzle

Carefully remove the machine and parts from its packaging. Identify all the parts packaged in the carton against the parts list. Please contact our customer service center (Monday - Friday 8:30AM - 5:00PM ET) at **(866) 902-9690** if anything is missing.

Delivery parts (See Fig. 2)

- A. Main machine x 1
- B. Lower round nozzle x 1
- C. Lower flat nozzle x 1
- D. Battery pack x 1
- E. Manual x 1
- F. Charger x 1



WARNING: If any parts are damaged or missing, do not operate this tool until the missing parts are replaced. Failure to heed this warning could result in serious personal injury.

NOTE! Always recycle the packaging in accordance with local recycling schemes.

TECHNICAL SPECIFICATIONS

Item No.	YF60VRX600-BL
Voltage/Capacity	60 v d.c. / 2.5 Ah Li-ion
Running Speed	3 Speed settings
Max. Air Speed	150 MPH
Max. Air Volume	600 CFM
Motor	Brushless
Charger	Input: 100~240 V, 50/60 Hz, Output: 63 v d.c. 2.5 A
Charging Time	60 Minutes
Weight	15.4 lbs

Battery pack type	YF60VRX2.5-BAT
Charger type	YF60VRX2A-CHG

INTENDED USE

The blower is intended for use for blow-sweeping leave grass, paper and similar materials, e. g. in gardens, sports stadiums, car parks and driveways. Do not operate your blower indoors. Do not use the blower for any other purpose because of the increased risk of accidents and damage to the blower. Never attempt to modify the blower in any way.

The machine is to be used only for its prescribed purpose. Any other use is deemed to be a case of misuse. The user/operator and not the manufacturer will be liable for any damage or injuries of any kind caused as a result of this.

SAFETY SYMBOLS

The purpose of safety symbols is to attract your attention to possible dangers. The safety symbols and the explanations with them deserve your careful attention and understanding. The symbol warnings do not, by themselves, eliminate any danger. The instructions and warnings they give are no substitutes for proper accident prevention measures.



WARNING: Be sure to read and understand all safety instructions in this Operator's Manual, including all safety alert symbols such as "**DANGER**," "**WARNING**," and "**CAUTION**" before using this tool. Failure to following all instructions listed below may result in electric shock, fire, and/or serious personal injury.

DAMAGE PREVENTION AND INFORMATION MESSAGES

These inform the user of important information and/or instructions that could lead to equipment or other property damage if they are not followed. Each message is preceded by the word "**NOTICE**", as in the example below:

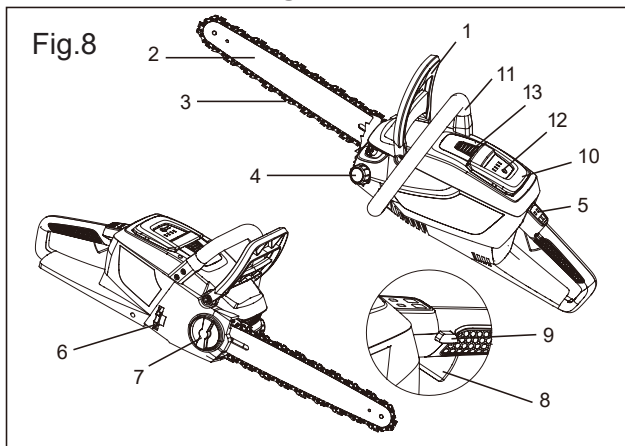
NOTICE: Equipment and/or property damage may result if these instructions are not followed.

TECHNICAL DATA

Model	YF60VRX16-CS
Nominal voltage of product with battery	60V
Chain speed	33 ft./s
Cutting length	16 in.(400 mm)
Chain type	90PX056X
Guide bar type	164MLEA041
Weight	17 lbs
Battery pack Model	YF60VRX2.5-BAT
Battery capacity	60 V DC, 2.5 Ah
Battery charger Model	YF60VRX2A-CHG
Input	100–240 V~, 50/60 Hz, 150 W
Output	63 V d.c., 2.5 A

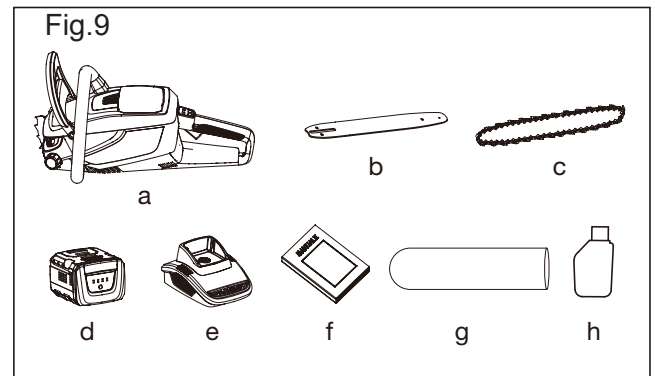
DESCRIPTION OF PRODUCT

Parts description (Fig. 8)



1. Front guard / chain brake
2. Guide bar
3. Saw chain
4. Oil tank cap
5. Indicator panel
6. Chain tension knob
7. Lock knob
8. Main switch
9. Lock- off button
10. Battery pack
11. Front handle
12. Power indicator button
13. Battery releasing/locking button

Check the delivery parts (Fig. 9)



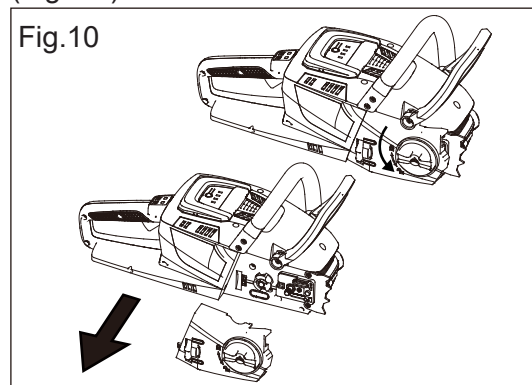
Remove the machine from its packaging carefully and make sure that all of the following parts are present:

- a. Chain saw x 1
- b. Guide bar x 1
- c. Saw chain x 1
- d. Battery pack x 1
- e. Charger x 1
- f. Manual x 1
- g. Guide bar cover x 1
- h. Bar and chain lubricant oil x 1

INSTALLATION

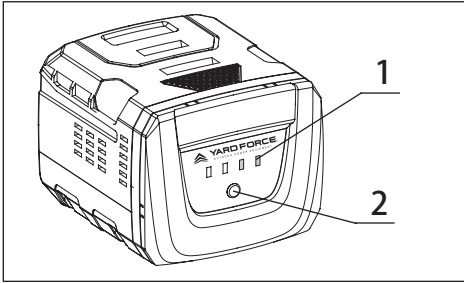
Install the guide bar and saw chain

1. Position the chain saw power head on its side with the side cover facing upwards.
2. Turn the side cover knob anti-clockwise to remove the side cover and then loosen the chain tensioning knob as much as possible. (Fig. 10)



3. Lay the new saw chain in a loop on a flat surface and straighten any kinks.
4. Place the chain drive links into the guide bar groove and make the chain a loop at the back of the guide bar. (Fig.11)

PRODUCT FEATURES



1. Green LED lamps
2. Indicator button

TECHNICAL DATA

Model	Voltage	Capacity
YFVRX2.5-BAT	60 V d.c.	2.5 Ah
YFVRX4.0-BAT	60 V d.c.	4.0 Ah

INTENDED USE

The battery pack YFVRX2.5-BAT/ YFVRX4.0-BAT only can be matched for Yard force 60V Li-ion battery Charger YF60VRX4A-CHG/ YF60VRX2A-CHG.

WARNING SYMBOLS



Before any use, refer to the corresponding paragraph in the present manual.



Li-Ion

Batteries contain Li-ion. Waste batteries should be sorted for eco-friendly. Do not dispose of waste batteries as unsorted municipal waste.



Do not throw into water



Do not litter to fire.



Do not subject the battery to strong sunlight over long periods and do not leave it on a heater (Max. 113 °F).



Do not expose and operate the tool in rain.