

Catalog Number
Notes
Type

FEATURES & SPECIFICATIONS

INTENDED USE

This fresh and innovative track head combines aesthetics with superior functionality for applications such as specialty retail, grocery, galleries, museums, hospitality, residential and educational environments.

CONSTRUCTION

Lamp holder: This unique "Mesh Back" design lamp holder with integral electronic driver is made of steel.

Tilt: 60 degrees

Pan: 350 degrees

Note: Lithonia Decorative Track Lighting components are not compatible with Lithonia Commercial Track Lighting components. Installation of mixed components will result in risk of shock hazard or fire, damage of fixture, failure to illuminate, and it does not meet UL standards.

Expected life: 35,000 hours - L70 lumens depreciation design criteria.

Lumen output: 500 lumens, 40° beam angle

Color temperature (CCT): 2700 K

CRI: 80

ELECTRICAL

120 VAC 60Hz, 8.6-watts

Dimmable down to 20%.

LISTINGS

cETL_{us} listed to UL1574 Track Lighting Standard.

ENERGY STAR® certified.

Dry location.

WARRANTY

5-year limited warranty. Complete warranty terms located at:

www.acuitybrands.com/CustomerResources/Terms_and_conditions.aspx.

Note: Actual performance may differ as a result of end-user environment and application.

All values are design or typical values, measured under laboratory conditions at 25°C.

Specifications subject to change without notice.



Decorative Track Lighting

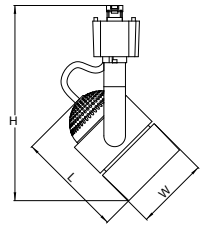
LTIHMSBK SERIES

Integrated LED Track Head



Specifications		
Width	Length	Maximum height
2-3/8	3-1/2	6-3/8

All dimensions are inches (centimeters) unless otherwise indicated.



ORDERING INFORMATION

All configurations of this product are considered "standard" and have short lead times.

Example: LTIHMSBK LED 27K BN

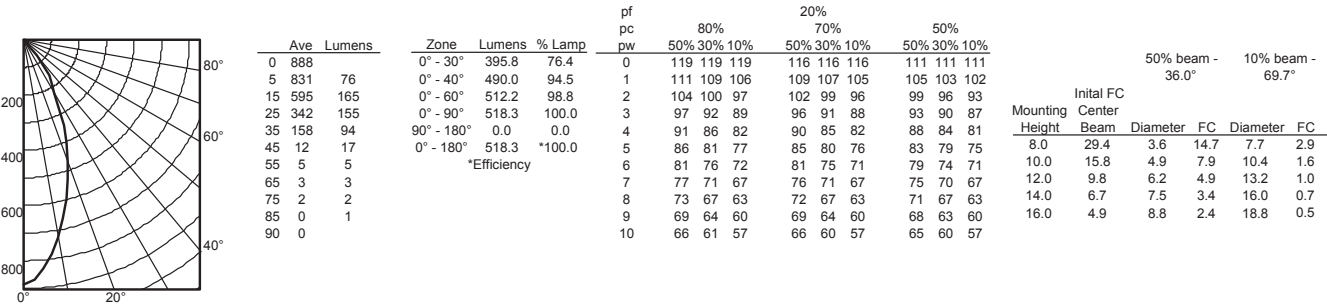
Series	LED, Lumen output	Color temperature	Finish
LTIHMSBK Integrated LED "Mesh Back" track head	LED 8.6W, 500 lumens	27K 2700 K	BN Brushed nickel

LTIHMSBK LED Integrated Track Head

PHOTOMETRICS

Distribution Curve	Distribution Data	Output Data	Coefficient of Utilization	Illuminance Data at 30" Above Floor for a Single Luminaire			
--------------------	-------------------	-------------	----------------------------	--	--	--	--

LTIHMSBK BN, 2700 K LEDs, input watts: 8.2, delivered lumens: 518, LM/W = 64, test no. 3434, tested in accordance with IESNA LM 79-80



ADDITIONAL DATA

LED

lighting facts®

A Program of the U.S. DOE

Lithonia Lighting

Light Output (Lumens)

495

Watts

8.66

Lumens per Watt (Efficacy)

57.16

Color Accuracy

Color Rendering Index (CRI)

80

Light Color

Correlated Color Temperature (CCT)

2700 (Warm White)

Warm White

Bright White

Daylight

2700K

3000K

4500K

6500K

All results are according to IESNA LM-79-2008: Approved Method for the Electrical and Photometric Testing of Solid-State Lighting. The U.S. Department of Energy (DOE) verifies product test data and results.

Visit www.lightingfacts.com for the Label Reference Guide.

Registration Number: JB22-ZAX3UC (4/15/2015)

Model Number: LTIHMSBK LED 27K BN

Type: Luminaire - Decorative



LTIHMSBK HEAD-LED-GEN2

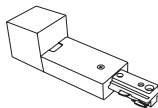
LTIHMSBK LED Integrated Track Head

TRACK ACCESSORIES

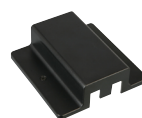


Live End Conduit

Connects to the end of the linear track section supplying power from a conduit feed.

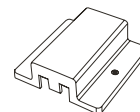


Series	Finish
LTLCECF	(blank) Matte white connector with black cover



Floating Feed

Permits track to be wired anywhere along track length.

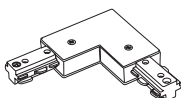


Series	Finish
LTFC	(blank) Matte white connector with black and white cover



L Connector

Joins two track sections to make a 90° angle.

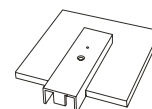


Series	Finish
LTLDC	(blank) Matte white connector with black cover

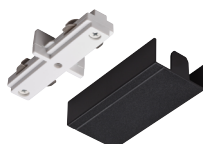


Live End Junction Box Feed

Connects to the end of the linear track section supplying power from a junction box.

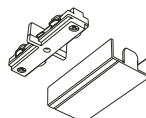


Series	Finish
LTLLEDC	(blank) Matte white connector with black cover



Straight Connector

Joins two track sections in a straight run.

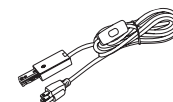


Series	Finish
LTCV	(blank) Matte white connector with black cover



Live End Power Feed

Permits track to be connected to grounded outlet using a 15' cord with switch included.

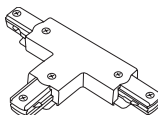


Series	Finish
LTLACS	(blank) Matte white



T Connector

Joins three sections at 90° angles.

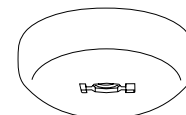


Series	Finish
L TTC	(blank) Matte white connector with black cover



Monopoint

Allows for a single linear track head to be installed into an existing junction box.



Series	Finish
LTMPR	(blank) Matte white



Track Stick

4-foot or 8-foot, 1-circuit track section with end caps.

Series	Finish
LTS4	MW Matte white
LTS8	DBL Black