

VEVOR[®]

TOUGH TOOLS, HALF PRICE

Technical Support and E-Warranty Certificate www.vevor.com/support

DC motor

Model: BY1016Z

We continue to be committed to provide you tools with competitive price.

"Save Half", "Half Price" or any other similar expressions used by us only represents an estimate of savings you might benefit from buying certain tools with us compared to the major top brands and does not necessarily mean to cover all categories of tools offered by us. You are kindly reminded to verify carefully when you are placing an order with us if you are actually saving half in comparison with the top major brands.

VEVOR®

TOUGH TOOLS, HALF PRICE

DC motor

MODEL: BY1016Z



NEED HELP? CONTACT US!

Have product questions? Need technical support? Please feel free to contact us:

Technical Support and E-Warranty Certificate
www.vevor.com/support

This is the original instruction, please read all manual instructions carefully before operating. VEVOR reserves a clear interpretation of our user manual. The appearance of the product shall be subject to the product you received. Please forgive us that we won't inform you again if there are any technology or software updates on our product.



Safety precautions

1.1 Safety advisory warning

Please read carefully before operation.

Be sure to read all safety warnings and all instructions before operating the motor. Failure to comply with warnings and instructions may result in electric shock, fire or serious injury.

If you encounter problems, please communicate with customer service in time to solve, your satisfaction is our service purpose.

1.2 Warning sign for safe operation of motor



1.3 Risk factor

- 1) Mechanical damage
- 2) Get an electric shock
- 3) Extrusion collision
- 4) Object impact
- 5) Other injuries

1.4 Operational considerations and triggers for motor non-work accidents

- 1) Check whether all accessories are connected tightly and not loose, check whether the pins in each plug-in are bent, and visually check whether each interface is consistent with the instructions in the wiring manual and whether the connection is correct. To avoid wiring errors and burning the controller.

2) It is recommended to use lead-acid batteries. Lithium batteries can also work (note that the battery voltage and battery power match the kit power). The recommended battery capacity is 12AH-20AH. The battery voltage needs to be consistent with the motor kit voltage, allowing an over voltage range of +10%. The positive and negative terminals of the power supply must be connected correctly (the positive terminal is connected to the thick line of the controller in red, and the negative terminal is connected to the thick line of the controller in black). Charging the battery and controller creates small arcing and sparks, which is normal for charging.

3) The electric door lock (orange, red) must be connected (you can use the electric door lock, or you can shorten the orange and red wires with wires), this operation is the last step.

4) The accessories outside this kit, which belong to the accessories purchased by you, may not match with the kit and need to be used after matching. Please contact customer service in time to match the kit with each other.

1.5 Precautions and suggestions

All machine operators should be trained and certified in electrical skills.

1) Before opening the box, check whether the package is intact, broken, and whether there is water. After removing the cover, carefully remove dust from the motor.

2) Install in a dry, dust less place;

3) Install in a well-ventilated place;

4) It is installed in a wide and smooth place for easy daily operation and maintenance.

Thank you for your reading, if you still have operational problems, please contact customer service in time, before contacting customer service, please provide clear photos taken by the motor and controller nameplate, provide clear photos and clear videos of the accessory wiring connected to each plug-in of the controller, you need to clearly see the color of each wire and the color of the accessory line. In order to provide you with a more convenient and faster solution.

TECHNICAL INFO

PERFORMANCE PARAMETERS OF BY1016Z MOTOR

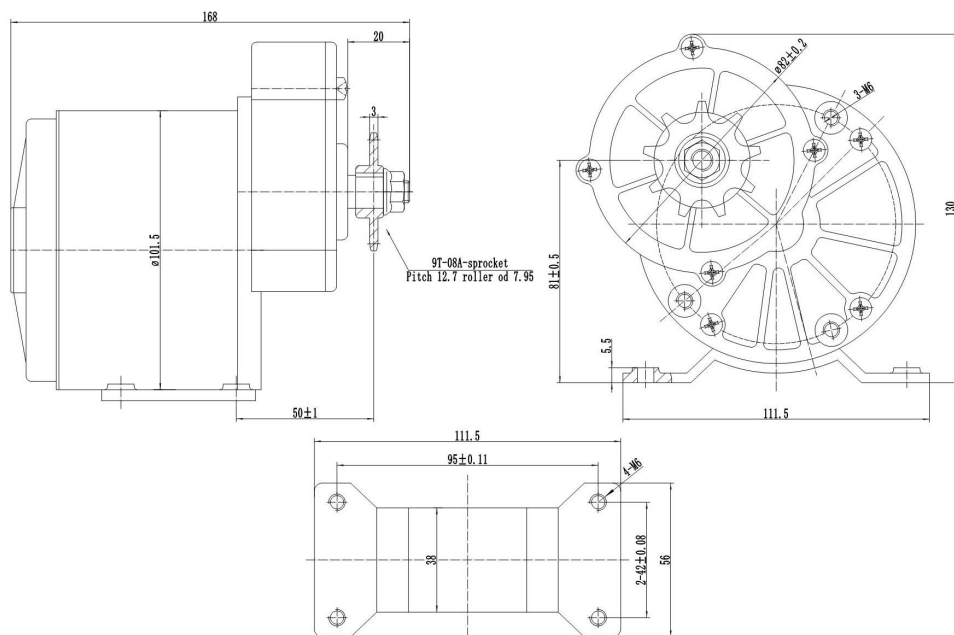
Rated Voltage	24V DC
Max Wattage	350W
Rated Speed	3000RPM
Rated Torque	1.11N.m
Rated Current	≤18.7A
Gear ratio	9.7:1
No-load Speed	3500RPM
No-load Current	≤1.5A
Motor Efficiency	≥78%
Sprocket Number	410-9T
Screw thread	M8*1.25the thread(Heat 80℃ for 1-2 minutes, rotate left and
Reduction gear	
Load weight	≤100KG
Size	101.5mm×158mm×145mm
Weight	2.35KG
Range of application	Small electric car, Electric bicycle, Electric go-kart, Electric scooter.....

Brush motor, can be used with 24V 350W control, can also be directly used with 24V direct current

CONFIGURATION LIST

	1. Motor
---	----------

Motor size



COMMON PROBLEMS AND REMEDIES

Phenomenon:

Motor does not work

Reason:

Battery The battery is too low and does not reach the required operating voltage

Solution:

1. Select a battery with the corresponding operating voltage ;
2. Check whether each plug-in is connected correctly and whether the connected terminals are connected reliably, so as to avoid failure to work normally due to incorrect connection or poor contact.



Comply with the European security certification.

CORRECT DISPOSAL



This product is subject to the provision of european Directive 2012/19/EU. The symbol showing a wheeled bin crossed through indicates that the product requires separate refuse collection in the European Union. This applies to the product and all accessories marked with this symbol. Products marked as such may not be discarded with normal domestic waste, but must be taken to a collection point for recycling electrical and electronic devices.

Manufacturer: Shanghaimuxinmuyeyouxiangongsi
Address: Shuangchenglu 803nong11hao1602A-1609shi, baoshanqu, shanghai 200000 CN.
Imported to AUS: SIHAO PTY LTD. 1 ROKEVA STREETEASTWOOD NSW 2122 Australia
Imported to USA: Sanven Technology Ltd. Suite 250, 9166 Anaheim Place, Rancho Cucamonga, CA 91730

UK	REP
----	-----

YH CONSULTING LIMITED.
C/O YH Consulting Limited Office 147,
Centurion House, London Road,
Staines-upon-Thames, Surrey, TW18 4AX

EC	REP
----	-----

E-CrossStu GmbH
Mainzer Landstr.69, 60329 Frankfurt am
Main.

VEVOR[®]

TOUGH TOOLS, HALF PRICE

Technical Support and E-Warranty Certificate

www.vevor.com/support