

**RYOBI**  
**String Trimmer**  
**Item No. RY40204**  
**Mfg. No. 107283001**  
**Repair Sheet**

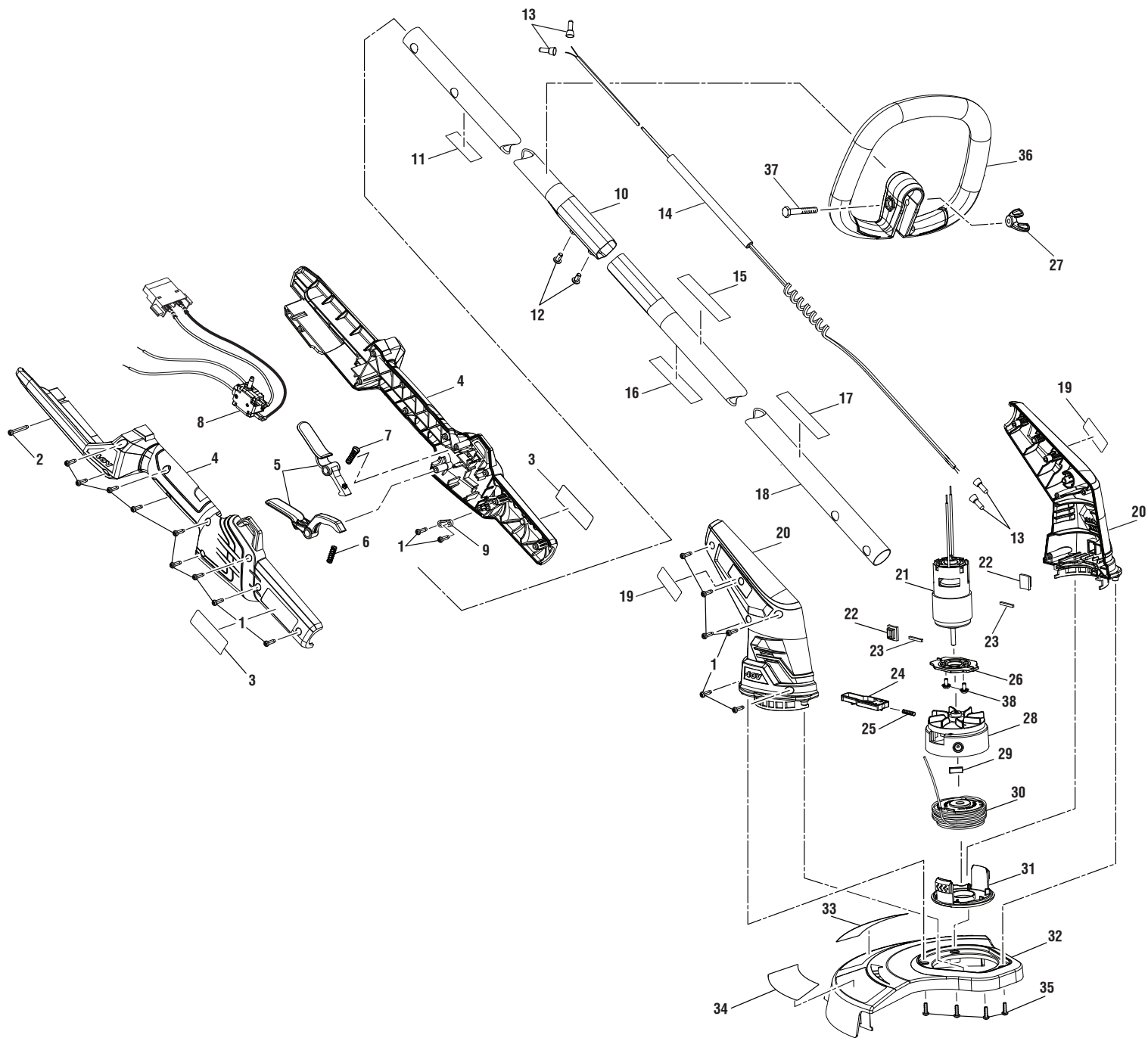
**TECHTRONIC INDUSTRIES POWER EQUIPMENT**

P.O. Box 1288, Anderson, SC 29622

Phone 1-800-860-4050

[www.ryobitools.com](http://www.ryobitools.com)

RYOBI STRING TRIMMER - ITEM NO. RY40204



**RYOBI STRING TRIMMER - ITEM NO. RY40204**

The model number will be found on a label attached to the motor housing. Always mention the model number of your **STRING TRIMMER** when requesting service or ordering repair parts.

| KEY NO. | NUMBER    | DESCRIPTION                                    | PART QTY | KEY NO. | NUMBER    | DESCRIPTION                                  | PART QTY |
|---------|-----------|--|----------|---------|-----------|--|----------|
| 1       | 661817001 | Screw (M4 x 14 mm, T15 Torx Pan Hd.).....      | 17       | 23      | 562079002 | Rubber Plate.....                            | 2        |
| 2       | 660208104 | Screw (M4 x 30 mm, T15 Torx Pan Hd.).....      | 1        | 24      | 310920001 | Slider Assembly.....                         | 1        |
| 3       | 940304497 | Logo Label (Rear Handle).....                  | 2        | 25      | 679034001 | Compression Spring.....                      | 1        |
| 4       | 204003001 | Rear Handle Assembly (Incl. Key No. 3).....    | 1        | 26      | 531159001 | Mounting Plate .....                         | 1        |
| 5       | 204007001 | Trigger Assembly .....                         | 1        | 27      | 518949001 | Wing Nut (1/4-20) .....                      | 1        |
| 6       | 679973001 | Compression Spring.....                        | 1        | 28      | 524851002 | Spool Base .....                             | 1        |
| 7       | 679973002 | Compression Spring.....                        | 1        | 29      | 639154001 | Balance Plate.....                           | 1        |
| 8       | 204008001 | Switch and Contact Plate Assembly .....        | 1        | 30      | 310917003 | Spool w/Line.....                            | 1        |
| 9       | 523001001 | Cord Clamp .....                               | 1        | 31      | 522994001 | Spool Cover.....                             | 1        |
| 10      | 204005001 | Upper Tube Assy. (Inc. Key No. 11).....        | 1        | 32      | 204001001 | Guard Assembly (Inc. Key Nos. 33-35) .....   | 1        |
| 11      | 941588125 | Data Label .....                               | 1        | 33      | 941606001 | Cutting Width Label.....                     | 1        |
| 12      | 660502002 | Screw w/Washer (M5 x 8 mm, Pan Hd.).....       | 2        | 34      | 940851152 | Auto-Feed Label .....                        | 1        |
| 13      | 790009004 | Wire Connector.....                            | 4        | 35      | 660208055 | Screw (M4 x 12 mm, Pan Hd.).....             | 4        |
| 14      | 291631001 | Spring Wire .....                              | 1        | 36      | 526764002 | Front Handle .....                           | 1        |
| 15      | 941657185 | Icon Warning Label.....                        | 1        | 37      | 660643008 | Bolt (1/4-20 x 40 mm, Hex Hd.).....          | 1        |
| 16      | 940006271 | Warning Label (Fr/Sp).....                     | 1        | 38      | 661861001 | Screw (M4 x 8 mm, Hex Soc. Flange Hd.) ..... | 2        |
| 17      | 940705329 | Logo Label (Drive Shaft) .....                 | 1        |         |           | <b>Not Shown:</b>                            |          |
| 18      | 204006001 | Lower Tube Assembly (Inc. Key Nos. 15-17)..... | 1        |         | 991000846 | Operator's Manual                            |          |
| 19      | 940705330 | Logo Label (Motor Housing).....                | 2        |         | 5-27-20   |  |          |
| 20      | 316305001 | Motor Housing Assy. (Inc. Key No. 19).....     | 1        |         | (Rev:04)  |  |          |
| 21      | 742225001 | Motor .....                                    | 1        |         |           |  |          |
| 22      | 564045001 | Rubber Plate.....                              | 2        |         |           |  |          |

\*\*\* Standard Hardware Item – May Be Purchased Locally

RYOBI STRING TRIMMER - ITEM NO. RY40204

