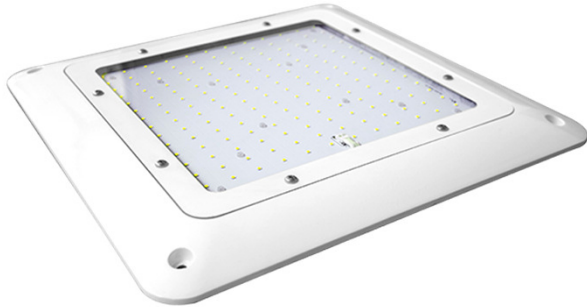




## ULTRA SLIM CANPOY LIGHT

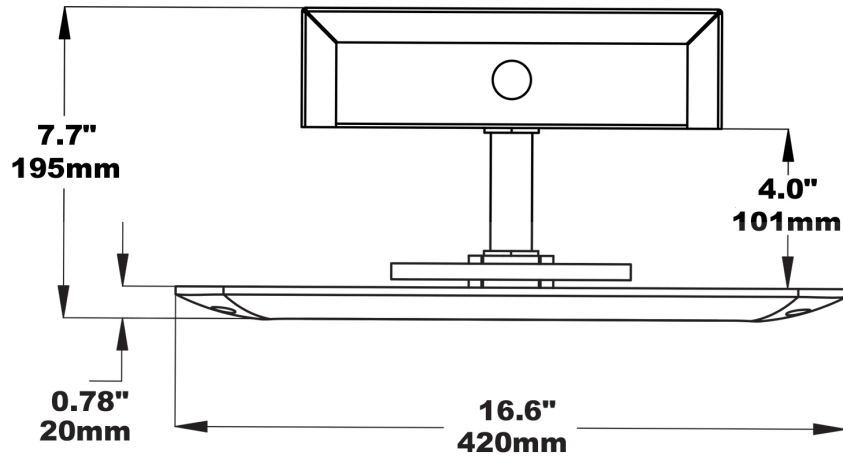


### PRODUCT DESCRIPTION

Flush mounting canopy fixture has an extremely thin profile constructed of rugged cast aluminum. Designed to offer secure, energy efficient and virtually maintenance-free lighting solutions for new or retrofit projects for service stations. The Fuel Pump fixture can be flush mounted to any canopy with round or square cutout sizes between 2.5" and 13.5" wide

**Applications:** Petroleum canopies, CNG fueling stations, low-medium bay general lighting, soffits.

## DIMENSIONS



## SPECIFICATIONS

Part Number	Input Power	Input Voltage	Efficiency	CCT	Light Distribution	CRI	Certificates	Warranty
JH-CP60W-27R	60W	100-277VAC	140Lm/W	5000K	90° / 120°	70	UL, DLC	5 Years
JH-CP75W-27R	75W	100-277VAC	140Lm/W	5000K	90° / 120°	70	UL, DLC	5 Years
JH-CP100W-27R	100W	100-277VAC	140Lm/W	5000K	90° / 120°	70	UL, DLC	5 Years
JH-CP120W-27R	120W	100-277VAC	140Lm/W	5000K	90° / 120°	70	UL, DLC	5 Years
JH-CP150W-27R	150W	100-277VAC	140Lm/W	5000K	90° / 120°	70	UL, DLC	5 Years
JH-CP180W-27R	180W	100-277VAC	140Lm/W	5000K	90° / 120°	70	UL, DLC	5 Years
JH-CP200W-27R	200W	100-277VAC	140Lm/W	5000K	90° / 120°	70	UL, DLC	5 Years