

# Installation Guide



## Items Included in Kit



7 - Old Mill Panel



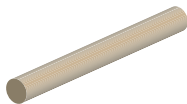
75 - Old Mill Panel  
Fasteners & Screws



1 - Grout Bag for  
Applying Adhesive



6 - 5 lb. bags of Adhesive



1 - Mortar Joint Tool

### Index:

pg. 1 - Panel Application

Steps: **1.** **2.**

pg. 2 - Adhesive Application

Steps: **3.** **4.** **5.** **6.**

pg. 3 - Applying Thin Brick

Steps: **7.** **8.**

Grouting

Steps: **9.** **10a.** **10b.**

### Items you will need:

- Old Mill Thin Brick
- Mortar (Type S)
- Screw Gun
- Mixing Bucket
- Gloves
- 4ft. Level
- Stiff Bristled Brush
- Wet Tile Saw or Angle Grinder

Caution: Take necessary precautions to avoid spills and dust contamination. Cover flooring, electronics and other items that are in the area.

Contains Portland cement. Wear rubber gloves and eye protection. Avoid eye contact or prolonged contact with skin. Wash thoroughly after handling. If eye contact occurs, flush with water for 15 minutes and consult physician. KEEP OUT OF REACH OF CHILDREN. DO NOT TAKE INTERNALLY. STORE IN A COOL, DRY AREA.

Warning: This product contains one of more chemicals known to the state of California to cause cancer. Warning: Do not breathe dust! This product contains Crystalline Silica which may cause cancer or delayed lung injury (Silicosis). Avoid creation of dust from this product whenever possible. Wear a NIOSH approved respirator if creation of dust is unavoidable, or when working in dust areas.

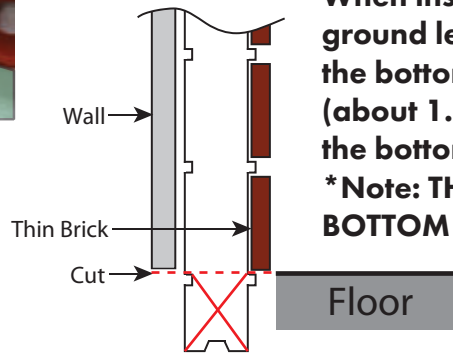
# Panel Application

1.



(pic 1)

Begin by positioning Old Mill Panel on the bottom corner of your wall. Level the panel using a 4 foot level (pic 1).



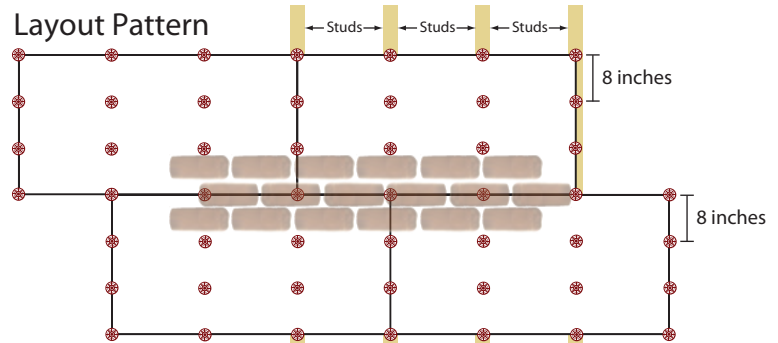
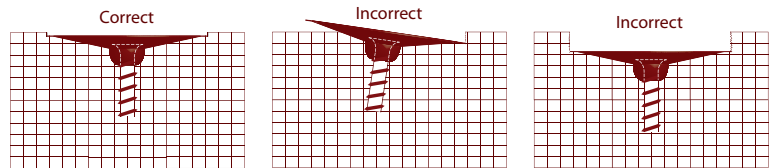
**When installing brick that is ground level, you must remove the bottom row of foam panel (about 1.5 in.). This ensures that the bottom row will be a full brick. \*Note: THIS IS ONLY FOR THE BOTTOM ROW OF PANELS.**

2.



(pic 2)

Once level, attach the panel with the Old Mill washers and exterior grade screws (pic 2). Screws should penetrate into the wall studs at least 1 inch.



## Adhesive Application

3.



(pic 3)

There are six 5 lb. bags of adhesive in your kit. Use one at a time to avoid loss of material. Place 2 ¼ cups of water in a small bucket and then empty in one 5 lb. bag of adhesive (pic 3). Take necessary precautions to avoid spills.

4.



(pic 4)

Thoroughly mix using a margin trowel or small mixer until you have reached a consistency similar to icing. Let stand for 8 minutes.

**(THIS IS CRITICAL. NOT ALLOWING THIS TIME COULD PRODUCE POOR ADHESION.)**

Mix again for 1 minute (pic 4).

5.



(pic 5)

Fill grout bag with 3-4 cups of adhesive while avoiding any necessary air pockets (pic 5). Do not overfill. Twist open end of bag to close.

6.



(pic 6)

Apply adhesive to backs of thin brick by holding the bag at a 45° angle to the brick. Gently squeeze and twist the bag at the same time for a consistent line (pic 6). Apply to 5-10 bricks at a time.

*\*Note: Rinse bag after use. It will be used later.*

7.



(pic 7)

If you have corners, apply brick to those areas first. Next, install two full rows across the top; this will set your pattern. To install brick, place the bottom edge of the brick against the upper edge of the brick spacer. Press the brick into place by applying pressure up and in on the brick (pic 7). **\*Note: Brick should be cut using a wet tile saw as to avoid dust.**

8.



(pic 8)

While applying brick, periodically check vertical alignment by placing 4 foot level vertically along edges of brick (pic 8). Allow 24hrs. for adhesive to set before moving on to step 9.

## Grouting

9.



(pic 9)

Once the brick is set, grout can be applied using a Type S mortar mix, or equal product. Refer to manufacturers instructions for mixing mortar. The standard is usually 5 lbs. of dry mortar to every 2½ cups of water. Thoroughly mix using a margin trowel or small mixer until you have reached a consistency similar to icing. **Let stand for 8 minutes. (THIS IS CRITICAL).** Mix again for one minute. Apply using grout bag (pic 9). Start at the top of the wall and work in 4'x4' sections. Hold the bag at a 45° angle to the brick and slightly overfill gaps. 56 sq. ft. of the Old Mill Brick System requires about 60lbs. of mortar mix.

10a.



(pic 10)

10b.



(pic 11)

Once mortar becomes firm to the touch (15 min. - 1 hr.), begin tooling with provided grout tool. Hold tool at a 45° angle to the brick and firmly drag along grout line to remove excess grout (Pic 10). After grout is completely tooled, clean with a stiff bristled brush. Use 45° angles (pic 11).