

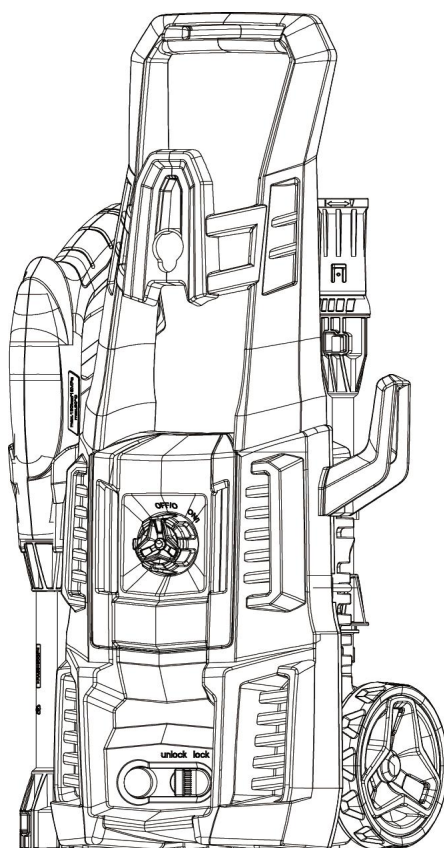
POWER SMART[®]

INSTRUCTION MANUAL

ELECTRIC PRESSURE WASHER

MODEL#PS2020

ITEM#DW1018B



Have product questions or need technical support? Please feel free to contact us!

Website: www.powersmartusa.com

Toll free: 1-872-314-0005 (Mon-Fri 9-5 EST)

Email: support@powersmartusa.com & support@amerisuninc.com



CONTENTS

TECHNICAL DATA.....	3
INTRODUCTION	4
SAFETY INFORMATION	4
SPECIFIC SAFETY RULES FOR ELECTRIC PRESSURE WASHER.....	8
SYMBOLS	9
KNOWING YOUR ELECTRIC PRESSURE WASHER.....	11
ASSEMBLY INSTRUCTION	12
OPERATING INSTRUCTION	14
MAINTENANCE	18
TROUBLE SHOOTING	20
EXPLODED VIEW & PART LIST	21
WARRANTY	22

TECHNICAL DATA

Electric pressure washer	Model #PS2020
Voltage:	AC120 V, 60 Hz
Motor:	11 Amps
Pressure:	1850PSI
Max Flow rate:	1.8 GPM
Water temperature:	32~104°F
Hose Length:	23ft
Cord length:	36ft
Package dimensions (L x W x H):	11.2 x 9.9 x 15.4 inch
Weight:	15 lb

INTRODUCTION

Thank You for Purchasing a PowerSmart® Product. This manual provides information regarding the safe operation and maintenance of this product. Every effort has been made to ensure the accuracy of the information in this manual. PowerSmart® reserves the right to change this product and specifications at any time without prior notice.

Please keep this manual available to all users during the entire life of the electric pressure washer.



This manual contains special messages to bring attention to potential safety concerns, electric pressure washer damage as well as helpful operating and servicing information. Please read all the information carefully to avoid injury and machine damage.

QUESTIONS? PROBLEMS?

Please contact our Customer Service Dept. with any questions and/or comments, either by Email: support@amerisuninc.com / support@powersmartusa.com, or Toll Free at (872)314-0005. We are available Mon-Fri 9am-5pm EST to help solve any issues that you might encounter.

SAFETY INFORMATION

Before operating this electric pressure washer, read and observe all warnings, cautions, and instructions on the electric pressure washer and in this Owner's Manual.

NOTE: The following safety information is not meant to cover all possible conditions and situations that may occur. Read the entire Owner's Manual for safety and operating instructions. Failure to follow instructions and safety information could result in serious injury or death.

This safety alert symbol is used to identify safety information about hazards that can result in personal injury.



A signal word (DANGER, WARNING, or CAUTION) is used with the alert symbol to indicate the likelihood and the potential severity of injury. In addition, a hazard symbol may be used to represent the type of hazard.

DANGER Indicates a hazard, which, if not avoided, will result in death or serious injury.

WARNING Indicates a hazard, which, if not avoided, could result in death or serious injury.

CAUTION Indicates a hazard, which, if not avoided, might result in minor or moderate injury.

CAUTION Without the alert symbol, indicates a situation that could result in damage.

GENERAL SAFETY RULES

Safety is a combination of common sense, staying alert, and knowing how your electric pressure washer works. **PLEASE SAVE THESE SAFETY INSTRUCTIONS.**



WARNING: Do not operate this unit until you read this instruction manual for safety, operation and maintenance instructions. Failure to follow all instructions listed below may result in electric shock, fire, and/or serious personal injury.

Work Area Safety

- This appliance is not intended for use by children or by unassisted, unsupervised persons whose physical, sensory or mental capabilities prevent them from using it safely. Children should be supervised to ensure that they do not play with the appliance.
- Keep bystanders away . All visitors and pets should be kept a safe distance away from the work area.
- Never use the machine in potentially explosive areas under any circumstances.
- The operator must use the appliance correctly. When working with the appliance, he must consider the local conditions and pay due care and attention to other persons, in particular children who are nearby.
- This electric pressure washer is designed for domestic use only:
 1. To clean cars, motorbikes, caravans, bicycles.
 2. To clean patios, fences, garden walls, pathways, driveways and house facades, particularly useful for cleaning blocked driveway.
 3. To remove of algae and moss from roofs, brickwork and guttering.
 4. To clean garden tools and machinery, furniture and barbecues.
 5. To clean hygienic of animal pens and their surrounding area.

Electrical Safety

Grounding instructions

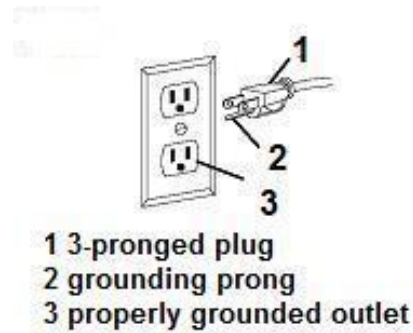
IN THE EVENT OF A MALFUNCTION OR BREAKDOWN, grounding provides the path of least resistance for electric current and reduces the risk of electric shock. This tool is equipped with an electric cord that has an equipment grounding conductor and a grounding plug. The plug **MUST** be plugged into a matching outlet that is properly installed and grounded in accordance with ALL local codes and ordinances.

DO NOT MODIFY THE PLUG PROVIDED. If it will not fit the outlet, have the proper outlet installed by a licensed electrician.

IMPROPER CONNECTION of the equipment grounding conductor can result in electric shock. The conductor with the green insulation (with or without yellow stripes) is the equipment grounding conductor. If repair or replacement of the electric cord or plug is necessary, **DO NOT** connect the equipment grounding conductor to a live terminal.

CHECK with licensed electrician or service personnel if you do not completely understand the grounding instructions, or if you are not sure if the tool is properly grounded.

USE ONLY THREE-WIRE EXTENSION CORDS that have 3-pronged plugs and outlets that accept the tool's plug as shown in Fig. A. Repair or replace a damaged or worn cord immediately.



CAUTION: In all cases, make certain the outlet in question is properly grounded. If you are not sure if it is, have a licensed electrician check the outlet.



WARNING: Do not expose to rain or use in damp locations.

Guidelines for using extension cords

Make sure your extension cord is in good condition. When using an extension cord, be sure to use one heavy enough to carry the current your product will draw. An undersized cord will cause a drop in line voltage resulting in loss of power and overheating. The table below shows the correct size to be used according to cord length and nameplate ampere rating. If in doubt, use the next heavier gauge. The smaller the gauge number, the heavier the cord.

Minimum Gauge for Extension Cords (AWG)
(When using 120 V only)

Ampere Rating		Total Length of Cord in feet			
More Than	Not More Than	25	50	100	150
0	6	18	16	16	14
6	10	18	16	14	12
10	12	16	16	14	12
12	16	14	12	Not Recommended	

Make sure your extension cord is properly wired and in good condition. Always replace a damaged extension cord or have it repaired by a qualified person before using it.

Protect your extension cords from sharp objects, excessive heat and damp or wet areas.

Use a separate electrical circuit for your tools. This circuit must not be less than a #12 wire and should be protected with a 15 A time-delayed fuse. Before connecting the motor to the power line, make sure the switch is in the OFF position and the electric current is rated the same as the current stamped on the motor nameplate. Running at a lower voltage will damage the motor.



WARNING: This tool must be grounded while in use to protect the operator from electric shock.

Personal Safety

- The electric pressure washer may not be directed at persons, animals, live electrical equipment or at the appliance itself.
- Keep bystanders away . All visitors and pets should be kept a safe distance away from the work area.
- Do not wear loose clothing or jewelry. They can get caught in moving parts. Protective rubber gloves and non-slip footwear are recommended when working outdoors.
- Watch what you are doing. Use common sense. Do not operate the pressure washer when you are tired, or under the influence of alcohol or drugs.
- Do not overreach. Keep proper footing and balance at all times.
- Avoid unintentional starting. Do not carry a plugged-in machine with your finger on the trigger. Make sure the switch is off before plugging in the machine.
- Do not abuse the cord . Never carry the machine by the cord or yank the cord to disconnect it from the receptacle. Keep the cord away from heat, oil, and sharp edges.
- Use safety glasses . Also use safety footwear, snug-fitting clothing, protective gloves, hearing and head protection.

Service












- Tool service must be performed only by qualified repair personnel. Service or maintenance performed by unqualified personnel could result in a risk of injury.
- When servicing a tool, use only identical replacement parts. Follow instructions in the Maintenance section of this manual. Use of unauthorized parts or failure to follow Maintenance Instructions may create a risk of electric shock or injury.

SPECIFIC SAFETY RULES FOR ELECTRIC PRESSURE WASHER





- Do not point the gun at anyone or at any part of the body.
- Before servicing, cleaning, or removing any parts, shut off the power and relieve pressure.
- Check the water temperature .This pressure washer is not meant to pump hot water. NEVER connect it to a hot water supply as it will significantly reduce the life of the pump.
- Store indoors. NEVER store the pressure washer outdoors or where it could freeze. The pump could be seriously damaged.
- Risk of explosion. Do not spray flammable liquids. Never draw in fluids containing solvents or undiluted acids. This includes petrol, paint thinner and heating oil. The spray mist thus generated is highly inflammable, explosive and poisonous. Do not use acetone, undiluted acids or solvents as they are damaging to the materials from which is the appliance is made.
- High pressure hoses, fixtures and couplings are important for the safety of the appliance. Only use high pressure hoses, fixtures and couplings recommended by the manufacturer.
- Create stability for the appliance prior to all work on or with the appliance to prevent accidents or damage. The stability of the appliance is warranted when it is placed on to an even surface.
- Never leave the appliance unattended when it is in operation.
- The appliance must not be used if the power cord or important parts of the appliance, e.g. high pressure hoses, trigger gun or safety devices are damaged. Please arrange for it to be replaced immediately by an authorized repair agent or a skilled electrician.
- The electric pressure washer must not be directed at other persons or directed by the user at him/herself to clean clothing or footwear.
- If the appliance is used in hazardous areas (e.g. filling stations) all of the safety provisions and operating instructions detailed in this manual must be observed.
- Never use the appliance to clean objects containing hazardous substances.
- Vehicle tyres or tyre valves are susceptible to damage from the electric pressure washer and may burst. The first indication of this is a discoloration of the tyre. Damaged vehicle tyres/tyre valves are highly dangerous. Ensure that a distance of at least 30 cm is observed when cleaning with the washer.
- Risk of explosion. Do not spray flammable liquids. Never draw in fluids containing solvents or undiluted acids. This includes petrol, paint thinner and heating oil. The spray mist thus generated is highly inflammable, explosive and poisonous. Do not use acetone, undiluted acids or solvents as they are damaging to the materials from which is the appliance is made.
- Always fully unroll electrical cables.
- Do not cover or modify the spray wand or the spray nozzle in any way.
- Do not use the machine if the persons nearby do not wear safety protection device.
- Wearing protective clothing and safety goggles to protect against splash back containing water or dirt.

SYMBOLS

Some of the following symbols may be used on this product. Please study them and learn their meaning. Proper interpretation of these symbols will allow you to operate the product better and safer.

SYMBOL	NAME	DESIGNATION/EXPLANATION
V	Volts	Voltage
A	Amperes	Current
Hz	Hertz	Frequency (cycles per second)
W	Watts	Power
~	Alternating Current	Type of current
no	No Load Speed	Rational speed, at no load
.../min	Per minute	Revolutions, strokes, surface speed, orbits, etc., per minute
	Class II Construction	Double-insulated construction.
	Safety Alert	Precautions that involve your safety.
	Read the user's manual	To reduce the risk of injury, user must read and understand user's manual before using this product.
	Eye protection	Wear eye protection when operating this equipment.
	Wet Conditions Alert	Do not expose to rain or use in damp locations.
	Keep bystanders away	To reduce the risk of injury, user must keep all bystanders at least 49 ft (15 m) away.
	Risk of Injection	To reduce the risk of injection or injury, never direct a water stream towards people or pets or place any body part in the stream. Leaking hoses and fittings are also capable of causing injection injury. Do not hold hoses or fittings.
	Risk of Explosion	Do not spray flammable liquids. Flammable liquids and their vapors are explosive and can cause severe burns or death.
	Kickback	To reduce the risk of injury from kickback, hold the spray wand securely with both hands when the machine is on.
	Electric Shock	Do not use near electric power lines or receptacle outlets.
	Chemical Burns	To reduce the risk of injury or damage, DO NOT USE ACIDS, ALKALINES, BLEACHES, SOLVENTS, FLAMMABLE MATERIAL, OR INDUSTRIAL GRADE SOLUTIONS in this product.

The following signal words and meanings are intended to explain the levels of risk associated with this product.

SYMBOL	SIGNAL	MEANING
	DANGER	Indicates an imminently hazardous situation, which, if not avoided, will result in death or serious injury.
	WARNING	Indicates a potentially hazardous situation, which, if not avoided, could result in death or serious injury.
	CAUTION	Indicates a potentially hazardous situation, which, if not avoided, may result in minor or moderate injury.
	CAUTION	(Without Safety Alert Symbol) Indicates a situation that may result in property damage.

SERVICE

Servicing requires extreme care and knowledge and should be performed only by a qualified service technician. For service we suggest you return the product to your nearest **AUTHORIZED SERVICE CENTER** for repair. When servicing, use only identical replacement parts.



WARNING

To avoid serious personal injury, do not attempt to use this product until you have read this Owner's Manual thoroughly and understand it completely. If you do not understand the warnings and instructions in this Owner's Manual, do not use this product. Call the Toll-free Helpline (872)314-0005 for assistance.



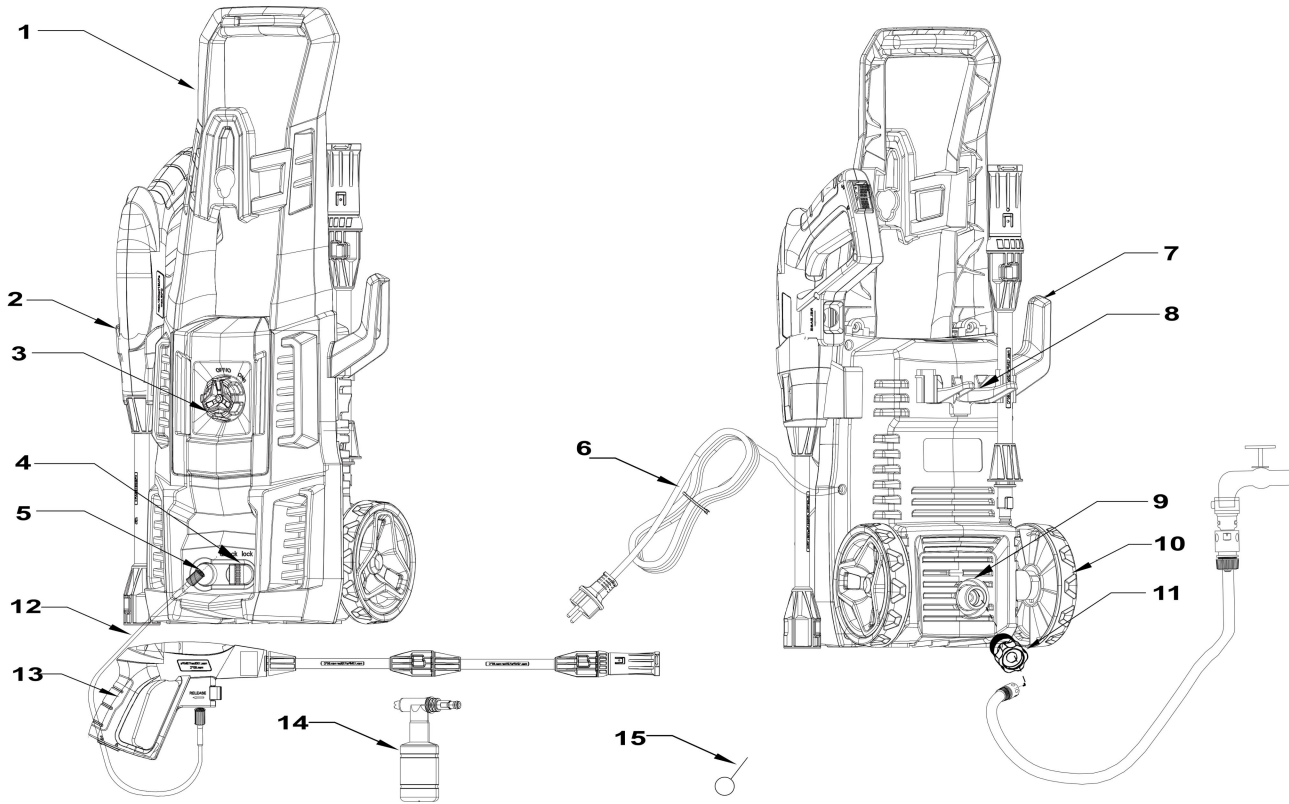
WARNING

The operation of any power tool can result in foreign objects being thrown into your eyes, which can result in severe eye damage. Before beginning power tool operation, always wear safety goggles or safety glasses with side shields and, when needed, a full face shield. We recommend Wide Vision Safety Mask for use over eyeglasses or standard safety glasses with side shields. Always use eye protection which is marked to comply with ANSI Z87.1.



KNOWING YOUR ELECTRIC PRESSURE WASHER

The safe use of this product requires an understanding of the information on the tool and in this operator's manual as well as a knowledge of the project you are attempting. Before use of this product, familiarize yourself with all operating features and safety rules.



- | | | | |
|---|----------------------|----|--------------------|
| 1 | Handle | 9 | Water inlet |
| 2 | Trigger gun holder | 10 | Wheel |
| 3 | On/Off switch | 11 | Inlet Filter Joint |
| 4 | Hose Lock Button | 12 | High pressure hose |
| 5 | High Pressure Outlet | 13 | Trigger gun |
| 6 | Power cord | 14 | Soap tank |
| 7 | Wire holder | 15 | Through Needle |
| 8 | Soap tank holder | | |

Unpacking

Unpack the pressure washer and all its parts, and compare against the list below. Do not discard the carton or any packaging materials. Please call customer service if any parts are damaged or missing.

Packing List

Electric Pressure Washer*1 / Spray Gun*1 / spray lance*2 /jet nozzle*1 / High Pressure Hose*1 / Inlet Filter Joint*1 / Gun holder*1 / Wire holder*1 / Soap Tank holder*1 / Soap Tank*1 / Through Needle*1 / Handle*1 / Screw Of Handle*2 / Wheel and wheel cover*2 / User Manual*1

ASSEMBLY INSTRUCTION



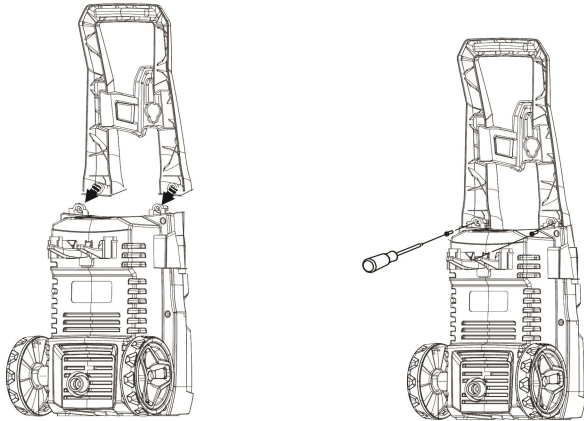
WARNING: If any parts are damaged or missing do not operate this product until the parts are replaced. Use of this product with damaged or missing parts could result in serious personal injury.



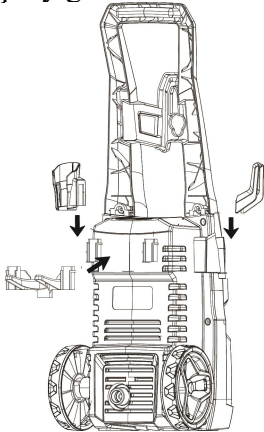
WARNING: Do not connect to power supply until assembly is complete. Failure to comply could result in accidental starting and possible serious personal injury.

1. **Fix the handle onto the machine.** Screw the washer handle tight to the main body as shown in the below figure.

NOTE: The screws will be packed together with the main body, please kindly check and find it when unpacked.



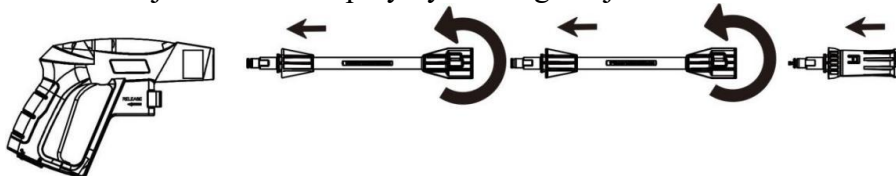
2. **Install the gun hanging, wire hanging and foam tank holder.** Press the holder for power cord, spray gun and foam tank as shown in the below figure.



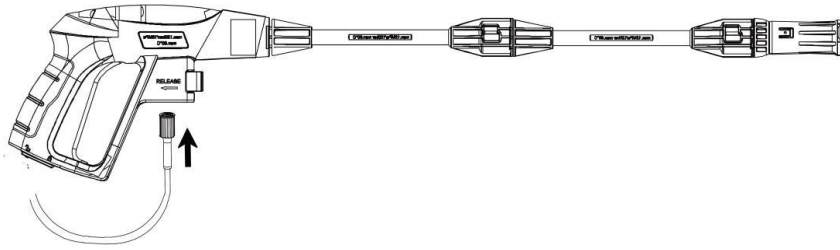
3. **Wheels assemble.** Install two wheels onto the main body with two screws, then attach wheel covers.

4. **High pressure gun set assemble.** Push the bayonet spray lance to the gun handle in the arrow direction and tight it by rotating it counterclockwise; connect second lance and jet nozzle in the same way.

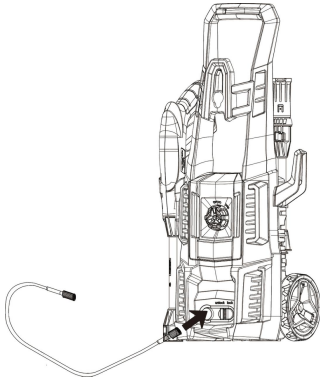
NOTE: Adjust the water spray by rotating the jet nozzle.



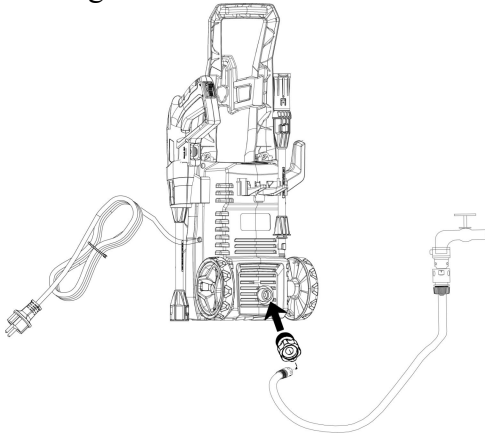
5. **Attach the high pressure hose to the gun.** Push the high pressure hose to the high pressure hose hole as shown in the figure, insert and quick-connect it tight to avoid leakage.



6. **Install the high pressure pipe to the main body.** Attach the high pressure pipe to the high pressure outlet on the machine. Make sure the pipe is installed tightly.



7. **Connect water inlet pipe with main body.** Connect the water inlet filter joint to the water inlet of the machine by rotating it clockwise, then push the water pipe to the quick connector and tighten it by rotating the connector clockwise.

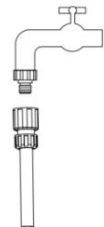


8. **Connect water pipe with faucet.** An ordinary 1/2" garden hose of min. 5 m and max. 25 m will be suitable.

NOTE: Connection to the public mains according to regulations.

IMPORTANT!

- Only use water without any impurities. If there is a risk of running sands in the inlet water (i.e. from your own well), an additional filter should be mounted.
- Let the water run through the water hose before connecting it to the machine to prevent sand and dirt from penetrating the machine.
- Check that the filter is fitted in the water inlet pipe and that it is not clogged up.
- Connect the water hose to the water supply by means of the quick connector (inlet water, max pressure: 1.0MPa, max. temperature: 104°F).



OPERATING INSTRUCTION

Electrical

This product has a precision-built electric motor. It should be connected to a power supply that is 120 volts, 60 Hz, AC only (normal household current). Do not operate this product on direct current (DC). A substantial voltage drop will cause a loss of power and the motor will overheat.

Starting Up



WARNING

- Prior to cleaning, make sure that the electric pressure washer is placed safely on level ground.
- Impurities in the water can damage the high pressure pump and accessories.
- All electric pressure washer (except hot water system) use the cold water. The suitable water temperature is 32°F to 104°F.
- Check the high pressure washer is assemble properly before connecting the pressure cleaner to your cold water supply.
- Make sure that the ON/OFF switch is in OFF(O) position.
- Motor does not run continuously, only when the trigger is squeezed. Release the lever of the trigger gun, the device will switch off again. Electric pressure washer remains in the system. **NEVER** direct the high pressure water stream at people or animals!
- Wear protective goggles and protective clothing during the cleaning process.
- Always wear eye protection with side shields marked to comply with ANSI Z87.1. Failure to do so could result in objects being thrown into your eyes resulting in possible serious injury.



Bleeding The Gun

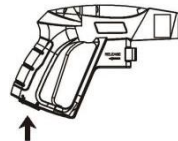
It is very important to bleed the gun before using the pressure cleaner.

To bleed the gun, simply connect the garden hose to the pressure cleaner and squeeze the trigger **BEFORE** turning the electrical supply on. This allows any air trapped inside the pressure cleaner and gun to be removed before using the unit. Continue holding trigger for approximately one minute to allow any excess air out of the unit. Water will flow through the gun at low pressure during this procedure.

Gun Safety Lock

This pressure cleaner is equipped with a gun trigger safety lock. When not using the pressure cleaner, press the safety lock of the gun to keep from accidentally engaging the high pressure spray.

NOTE:The safety lock is under the trigger switch.



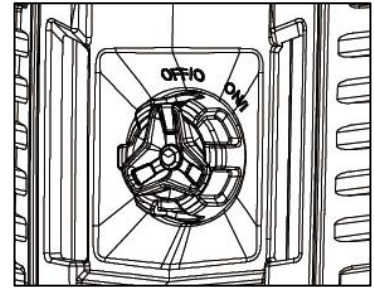
Switch ON/OFF

To switch ON the pressure washer

1. Press the trigger on the gun, turn on the water tap to expel the air inside the machine.
2. Plug in the power cord and turn on the switch knob to “ON/I” position.

NOTE

- The pressure cleaner will only run when the switch knob is in the “ON/I” position and the trigger on the gun is squeezed. When you release the trigger to stop spraying water through the gun, the motor on the pressure cleaner will automatically shut off. Simply squeeze the trigger again to resume using the cleaner.
- Always adjust the distance and thus the pressure of the nozzle to the surface, which is to be cleaned.
- Do not cover the machine during operation or use it in a room without adequate ventilation!
- If the machine is left or not used for 5 minutes, it must be switched to OFF/O position.



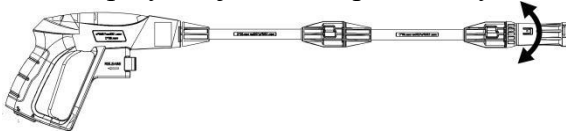
To switch OFF the pressure washer

1. Release the trigger.
2. Switch the unit OFF by turning the switch knob to “OFF/O” position.
3. Disconnect the electrical plug from the socket.
4. Shut off the water supply and activate the trigger to relieve the machine of pressure.
5. Lock the spray gun.

NOTE: Press the safety lock to LOCK position to avoid accident start. The unit should be turned completely OFF while not in use or unattended.

Adjustable Spray Nozzle

The adjustable nozzle will allow you to use any variety of spray patterns from a full fan spray to a direct stream spray. Adjust water patterns by rotating the spray nozzle clockwise/counterclockwise.



When using the pressure cleaner to clean wood decks, siding, vehicles etc., always start using the fan spray and begin spraying from a minimum 36" away to avoid damaging the surface of the material you are cleaning. Always begin by spraying in a testing area free and clear of people and objects.



WARNING: High pressure jets can be dangerous if subject to misuse. The jet must not be directed at persons, live electrical equipment or the appliance itself.

Do not direct the jet against yourself or others in order to clean clothes or foot-wear.

Using Detergents



CAUTION: Use only detergents specifically designed for use with pressure washers.

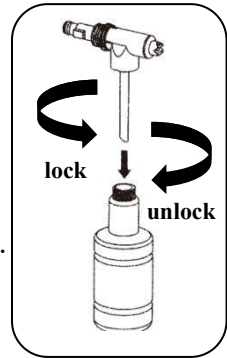
DO NOT USE household detergents, acids, alkaline solutions, bleaches, solvents, flammable material, or industrial grade solutions. These could damage the pressure washer. Many detergents may require mixing prior to use. Prepare the cleaning solution as instructed on the solution bottle.

The pressure cleaner will dispense detergent at low pressure.

1. Connect the detergent tank with the gun handle.

NOTE: Pressing and rotating the long gun rod counter-clockwise at the same time when separating the long gun rod with gun handle.

2. Separate the nozzle from the detergent container by turning the detergent reservoir clockwise and separating the two components.
3. Fill the detergent container with approved detergent. Pour the detergent slowly into the reservoir using a funnel. Re-attach the two components by re-inserting the nozzle back onto the detergent reservoir and turning counter-clockwise.
4. Press the gun trigger to use detergents.



NOTE: Fill the container with detergent only. Do not put any water into the container. The pressure cleaner will mix water and detergent automatically. When finished applying the detergent to the work surface, remove the detergent tank and install the high pressure spray to cleaning the detergents.

Using The High Pressure Hose



WARNING

Injection hazard. Fully unwrap and straighten high pressure hose prior to and during each use and do not allow it to become kinked. The high pressure hose features an outer covering that provides strength to the hose. If the outer covering becomes damaged, stop using the hose and replace it immediately. A kinked or damaged hose can develop a high pressure leak and result in a possible injection or other serious personal injury.

To prevent damage to the outer covering:

- Inspect the hose before every use.
- Fully unwrap and straighten hose before use.
- Do not allow the high pressure hose to be kinked.
- Keep hose away from hot surfaces and sharp edges.
- Do not pull unit by high pressure hose.
- Do not allow hose to be crushed or wrapped around objects.

Cleaning Tips



CAUTION! Always test the spray in an area free and clear of people and objects before you spray at the intended cleaning surface.

Wood and Vinyl Decks

Rinse deck and surrounding area with fresh water. If using detergent, fill the detergent reservoir and apply to the area being cleaned at low pressure. For optimal results, reduce your work area to smaller sections and clean each section one at a time. Allow the detergent to rest on the surface for a few minutes and then rinse at high pressure. **DO NOT LET THE DETERGENT DRY.**

Always clean from left to right and top to bottom for best results. Rinse at high pressure using the fan spray keeping the tip of the spray nozzle at least 6-9 inches from the cleaning surface. Maintain a further distance from the cleaning area when using a direct spray. Caution: For softer woods, increase the distance from the cleaning area.

Cement Patios, Stone, and Brick

Rinse cleaning and surrounding area with fresh water. If using detergent, fill the detergent reservoir and apply to the area being cleaned at low pressure. Rinse at high pressure using the fans praying sweeping motion keeping the tip of the spray nozzle at least 3-6 inches from the cleaning surface. Maintain a further distance from the cleaning area when using a direct spray.

Cars, Boats, and Motorcycles

Rinse cleaning and surrounding area with fresh water. If using detergent, fill the detergent reservoir and apply to the area being cleaned at low pressure. To achieve the best results, clean one side at a time. Allow the detergent to rest on the surface for a few minutes, but do not let the detergent dry. Rinse at high pressure using the fan spray in a sweeping motion keeping the tip of the spray nozzle at least 8 inches from the cleaning surface. Maintain a further distance from the cleaning area when using a direct spray. Wipe surface dry for a polished finish.

Barbecue Grills, Power Equipment, and Garden Tools

Rinse cleaning and surrounding area with fresh water. If using detergent, fill the detergent reservoir and apply to the area being cleaned at low pressure. Allow the detergent to rest on the surface for a few minutes, but do not let the detergent dry. Rinse at high pressure using the fan spray keeping the tip of the spray nozzle at least 1-3 inches from the cleaning surface. Maintain a further distance from the cleaning area when using a direct spray.

MAINTENANCE



WARNING: In order to avoid personal injury and the risk of fire and electric shock, turn off the appliance and remove the mains plug prior to any care and maintenance work.

When servicing, use only identical replacement parts. Use of any other parts could create a hazard or cause product damage.

Clean-Up

When finished using the pressure washer, follow these steps:

1. Turn the pressure cleaner to the OFF(O) position.
2. Turn off the water supply.
3. Before disconnecting high-pressure hose connection, point the gun in a safe direction and discharge the high-pressure water.
4. Disconnect high-pressure hose from the pressure cleaner and gun.
5. Disconnect garden hose from the pressure cleaner.
6. Remove quick coupler fitting from garden hose and attach to the nipple portion of the fitting installed on the pressure cleaner for storage.
7. Remove excess water from the pump by tipping the unit on both sides to drain any remaining water from inlet and outlet fittings.
8. Remove water intake filter and flush with water to remove dirt or debris, then remount the filter back.
9. Drain detergent reservoir and flush with running water.
10. Wipe away any remaining water on all parts and fittings Engage the gun safety lock.
11. Store the pressure cleaner, parts, and accessories in an area with a temperature above 0° C (32°F).

Maintenance

- This pressure cleaner is supplied with a closed lubrication system, so no addition of oil is needed.
- Check all hoses and accessories for damage prior to use.
- Check the inlet filter periodically for deposits. Clean this filter regularly for maximum performance.

Moving The Pressure Washer

NOTE: Never lift or carry this product using the handle and never place the unit in any position other than upright on its wheels.

- Turn the pressure washer off. Point nozzle in a safe direction and pull trigger to release water pressure.
- Tilt the machine toward you slightly until it balances on the wheels then roll the machine to the desired position.
Do not tilt forward or sideways when moving.
- DO NOT attempt to move the unit by pulling on any of the hoses.

Storing The Pressure Washer

NOTE: Regular use of pump protector will give you better performance of the unit and increase the life of the pump.

Store in a dry, covered area where the weather can't damage it. It is important to store this product in a frost-free area. Always empty water from all hoses, the pump, and the soap tank before storing.

1. Make sure the on/off switch is in the **OFF** position.
2. Disconnect both the high pressure hose and the garden hose from the pump.
3. Tilt the unit to allow any remaining water in the pump to drain from the water inlet.

NOTICE

- If the location where your pressure washer is stored will fall below 32°F, the use of a pump protector is required before storing to prevent freeze damage. Freeze damage will void your warranty.
- Store the unit and accessories in an area that does not reach freezing temperatures. Do not store near furnace or other sources of heat that could dry out the pump seals.

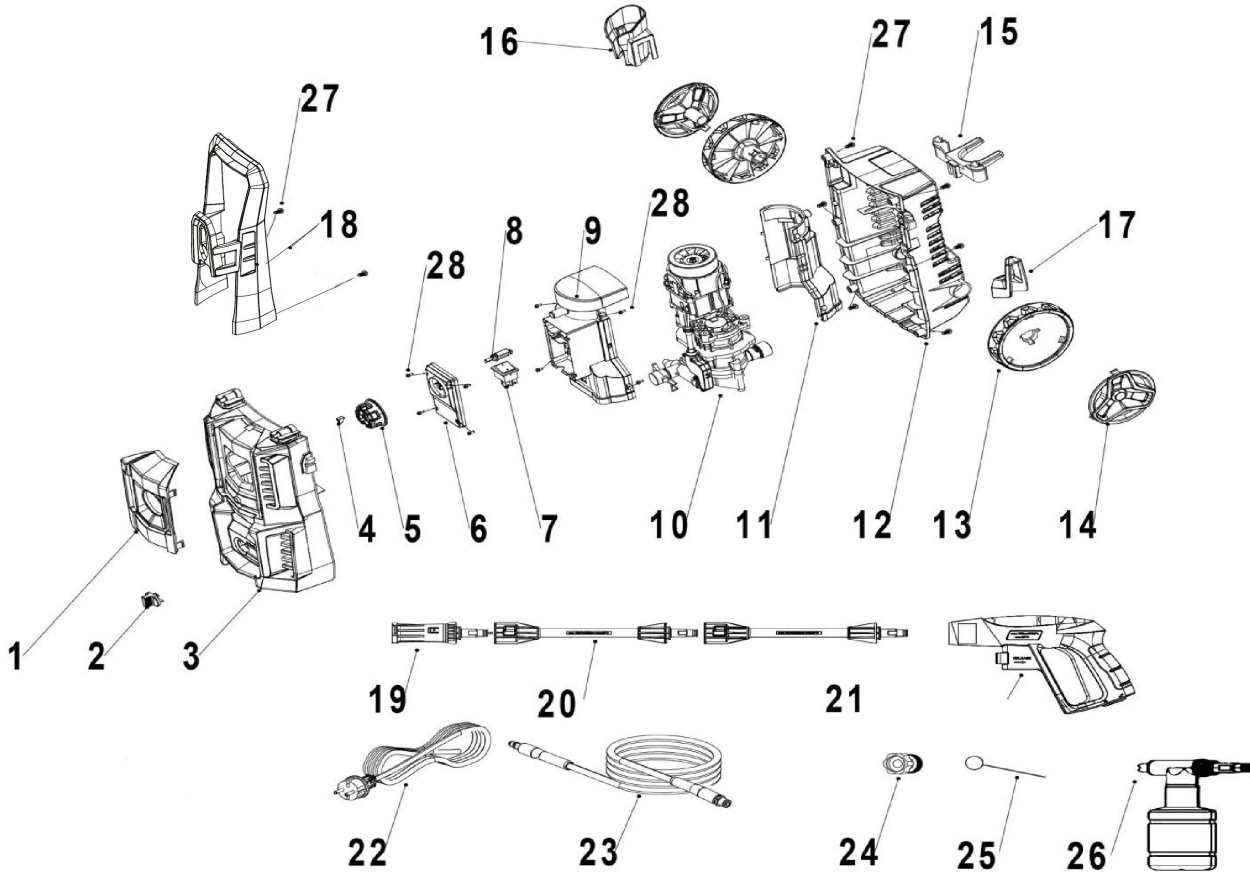
TROUBLE SHOOTING



WARNING: Read instruction manual first! Remove plug from power source before making adjustments or assembling accessories.

Problem	Possible Cause	Possible Solution
Motor will not start.	<ol style="list-style-type: none"> 1. On/Off switch is in the “OFF” (O) position. 2. Power cord is not plugged in. 3. Electrical outlet does not supply adequate power. 4. Tripped pressure washer circuit breaker. 5. Power switch is ON however gun trigger is not squeezed ON. 	<ol style="list-style-type: none"> 1. Set switch to the “ON” () position. 2. Plug in power cord. 3. Try a different outlet. 4. Allow to cool, and restart unit. 5. With power switch ON push in on the gun trigger which will engage the AUTO ON switch.
Unit does not reach high pressure.	<ol style="list-style-type: none"> 1. Water supply is restricted. 2. Not enough water supply. 3. Water intake filter is clogged. 	<ol style="list-style-type: none"> 1. Check garden hose for kinks, leaks and blockage. 2. Open water source fully. 3. Remove filter and rinse in warm water.
Output pressure varies high and low.	<ol style="list-style-type: none"> 1. Not enough inlet water supply. 2. Pump is sucking air. 3. Water inlet filter clogged. 4. Supply voltage below minimum. 5. Calcified gun, hose or power spray tip. 	<ol style="list-style-type: none"> 1. Turn water on fully. Check garden hose for kinks, leaks or blockage. 2. Check that hoses and fittings are airtight. Turn “OFF” machine, and purge pump by squeezing trigger gun until a steady flow of water emerge through the spray tip. 3. Remove filter and rinse in warm water. 4. Verify that only the pressure washer is running on this circuit. 5. Run distilled vinegar through detergent tank.
Motor buzzes but fails to run.	<ol style="list-style-type: none"> 1. Supply voltage below minimum. 2. System has residual pressure. 3. Voltage loss due to extension cord. 4. Pressure washer not used for long periods. 5. Residual friction among components. Unit might hum. 	<ol style="list-style-type: none"> 1. Verify that only the pressure washer is running on this circuit. 2. Turn unit “OFF”, squeeze trigger on spray wand to release pressure, then turn unit “ON”. 3. Unplug any extension cords attached and plug the unit directly into the outlet. 4. Call customer service. 5. Disconnect water supply and power ON for 2 to 3 seconds, repeat couple times or until the motor starts.
No water.	<ol style="list-style-type: none"> 1. Water supply is OFF. 2. Kink in the garden hose. 	<ol style="list-style-type: none"> 1. Turn ON water supply. 2. Remove kink in garden hose.

EXPLODED VIEW & PART LIST



ITEM	STOCK#	DESCRIPTION	QTY	ITEM	STOCK#	DESCRIPTION	QTY
1	DW1018B-001	decorating part	1	15	DW1018B-015	foam tank holder	1
2	DW1018B-002	water break	1	16	DW1018B-016	gun holder	1
3	DW1018B-003	front cover	1	17	DW1018B-017	wire hanging	1
4	DW1018B-004	switch indicator	1	18	DW1018B-018	handle	1
5	DW1018B-005	main switch knob	1	19	DW1018B-019	jet nozzle	1
6	DW1018B-006	switch box cover	1	20	DW1018B-020	spray lance	2
7	DW1018B-007	switch	1	21	DW1018B-021	spray gun	1
8	DW1018B-008	lever	1	22	DW1018B-022	power cord	1
9	DW1018B-009	mp top cover	1	23	DW1018B-023	high pressure hose	1
10	DW1018B-010	mp assembly	1	24	DW1018B-024	inlet filter joint	1
11	DW1018B-011	mp lower cover	1	25	DW1018B-025	through needle	1
12	DW1018B-012	rear cover	1	26	DW1018B-026	foam tank	1
13	DW1018B-013	wheel	2	27	DW1018B-027	Screw ST4.8*20	8
14	DW1018B-014	wheel cover	2	28	DW1018B-028	Screw ST3.5*20	8

ONE (1) YEAR LIMITED WARRANTY

PowerSmart® is committed to building tools that are dependable for years. Our warranties are consistent with our commitment and dedication to quality.

ONE (1) YEAR LIMITED WARRANTY OF POWERSMART PRODUCTS FOR HOME USE.

PowerSmart® ("Seller") warrants to the original purchaser only, that all PowerSmart® consumer power tools will be free from defects in material or workmanship for a period of one (1) year from date of purchase. Ninety (90) days for all PowerSmart® Products, if the tool is used for professional or commercial use.

SELLER'S SOLE OBLIGATION AND YOUR EXCLUSIVE REMEDY under this One (1) Year Limited Warranty and, to the extent permitted by law, any warranty or condition implied by law, shall be the repair or replacement of parts, without charge, which are defective in material or workmanship and which have not been misused, carelessly handled, or misrepaired by persons other than Seller or Authorized Service Center. To make a claim under this Limited Warranty, you must return the entire power tool product; transportation prepaid, to PowerSmart® Include a legible copy of the original receipt, which lists the date of purchase (month and year) and the name of the company purchased from.

THIS LIMITED WARRANTY DOES NOT APPLY TO ANY ACCESSORY ITEMS INCLUDED WITH THE TOOL SUCH AS CIRCULAR SAW BLADES OTHER RELATED ITEMS OR TO ANY REPLACEMENT PARTS LISTED UNDER MAINTENANCE.

ANY IMPLIED WARRANTIES SHALL BE LIMITED IN DURATION TO ONE (1) YEAR FROM DATE OF PURCHASE. SOME STATES IN THE U.S. AND SOME CANADIAN PROVINCES DO NOT ALLOW LIMITATIONS ON HOW LONG AN IMPLIED WARRANTY LASTS, SO THE ABOVE LIMITATION MAY NOT APPLY TO YOU.

IN NO EVENT SHALL SELLER BE LIABLE FOR ANY INCIDENTAL OR CONSEQUENTIAL DAMAGES (INCLUDING BUT NOT LIMITED TO LIABILITY FOR LOSS OF PROFITS) ARISING FROM THE SALE OR USE OF THIS PRODUCT. SOME STATES IN THE U.S. AND SOME CANADIAN PROVINCES DO NOT ALLOW THE EXCLUSION OR LIMITATION OF INCIDENTAL OR CONSEQUENTIAL DAMAGES, SO THE ABOVE LIMITATION OR EXCLUSION MAY NOT APPLY TO YOU.

THIS LIMITED WARRANTY GIVES YOU SPECIFIC LEGAL RIGHTS, AND YOU MAY ALSO HAVE OTHER RIGHTS WHICH VARY FROM STATE TO STATE IN THE U.S., PROVINCE TO PROVINCE IN CANADA AND FROM COUNTRY TO COUNTRY.

For questions / comments, technical assistance or repair parts –
Please call toll free at: 1-872-314-0005 (M-F 9am – 5pm EST)
Email: support@amerisuninc.com / support@powersmartusa.com

SAVE YOUR RECEIPTS. THIS WARRANTY IS VOID WITHOUT THEM.

POWER SMART®